



# Order Response

## Business Message Standard (BMS)

*Release 3.2*

*01-Dec-2014, Issue 1*



## Document Summary

Document Item	Current Value
Document Title	Business Message Standard (BMS) – Order Response
BMS Release	3.2
Document Version	Issue 1, 01-Dec-2014
Work Group Name	eCom SMG
BMS Template Version	2.4

## Work Request Reference

Date of WR Submission to GSMP	WR Submitter	Work Request (WR) Number
03-May-2012	GS1 Australia	12-000212
05-Jul-2012	GS1 Australia	12-000213
05-Jul-2012	GS1 Australia	12-000251
15-Oct-2009	Philips	09-000248
15-Oct-2009	GS1 Australia, GS1 Germany, GS1 Netherlands	09-000240
15-Oct-2009	GS1 Australia, GS1 Germany, GS1 Netherlands	09-000238
15-Oct-2009	GS1 Australia, GS1 Germany, GS1 Netherlands	09-000236
06-May-2009	Stef Spaan, GS1 Netherlands	09-000134
20-Aug-2008	John Ryu, GS1	08-000209
14-Mar-2008	Troy Denyer, GS1 Australia	08-000053
14-Jan-2008	Troy Denyer, GS1 Australia	08-000009
14-Jan-2008	Troy Denyer, GS1 Australia	08-000008
03-Oct-2007	Eric Maree, Accenture	07-000338
31-Ju-2007	John Ryu, GS1 Global Office	07-000300
25-Jan-2007	Rob Heather, GS1 UK	07-000026
25-Jan-2007	Rob Heather, GS1 UK	07-000027
25-Jan-2007	Rob Heather, GS1 UK	07-000031
31-Jan-2005	IRT Upstream Standard	05-000023
30-Oct-2003	Unilever on behalf of OFSCI (Foodservice Supply Chain Initiative)	03-000145
07-Feb-2014	GS1 Germany	14-000044
20-Mar-2014	GS1 Slovenia	14-000021
25-Jun-2014	GS1 Global Office	14-000110

## Business Requirements Document (BRAD) Reference

BRAD Title	BRAD Issue Date	BRAD Version
BRAD Order Response Document and Reason Code	14 Mar 2007	BRAD Version 0.0.2
BRD for UK Food Service Ordering	24 Nov 2004	BRAD Version 0.8
BRAD for Upstream Standards Demand & Supply Signals	01 Nov 2004	BRAD Version 0.1.0
BRAD for Upstream Standards Demand & Supply Signals	07 Apr 2005	BMS Release Version 2.0.2 and BMS Document Version 0.1.13
BRAD eCom Maintenance Release 2 BMS 2.6.0	29-Jun-2009	Version 0.1.1
BRAD for Current Requirements Queue (Major Release 3)	23 Nov 2010	BRAD Version 0.2.0

## Document Change History

Date of Change	Version	Changed By	Reason for Change	Summary of Change
12-Jan-2012	BMS 3.0 – Issue 1	Mark Van Eeghem	BMS Release 3.0	See summary of changes
01-May-2013	BMS 3.1 – Issue 1	Coen Janssen	BMS Release 3.1	See summary of changes
01-Dec-2014	BMS 3.2 – Issue 1	Ewa Iwicka	BMS Release 3.2	See summary of changes

## Disclaimer

WHILST EVERY EFFORT HAS BEEN MADE TO ENSURE THAT THE GUIDELINES TO USE THE GS1 STANDARDS CONTAINED IN THE DOCUMENT ARE CORRECT, GS1 AND ANY OTHER PARTY INVOLVED IN THE CREATION OF THE DOCUMENT HEREBY STATE THAT THE DOCUMENT IS PROVIDED WITHOUT WARRANTY, EITHER EXPRESSED OR IMPLIED, REGARDING ANY MATTER, INCLUDING BUT NOT LIMITED TO THE OF ACCURACY, MERCHANTABILITY OR FITNESS FOR A PARTICULAR PURPOSE, AND HEREBY DISCLAIM ANY AND ALL LIABILITY, DIRECT OR INDIRECT, FOR ANY DAMAGES OR LOSS RELATING TO OR RESULTING FROM THE USE OF THE DOCUMENT. THE DOCUMENT MAY BE MODIFIED, SUBJECT TO DEVELOPMENTS IN TECHNOLOGY, CHANGES TO THE STANDARDS, OR NEW LEGAL REQUIREMENTS. SEVERAL PRODUCTS AND COMPANY NAMES MENTIONED HEREIN MAY BE TRADEMARKS AND/OR REGISTERED TRADEMARKS OF THEIR RESPECTIVE COMPANIES. GS1 IS A REGISTERED TRADEMARK OF GS1 AISBL.

# Table of Contents

<b>1. Business Domain View .....</b>	<b>5</b>
1.1. Introduction.....	5
1.2. References .....	5
<b>2. Business Context .....</b>	<b>5</b>
<b>3. Business Transaction View .....</b>	<b>6</b>
3.1. Business Transaction – Processing Order Response .....	6
<b>4. Business Information View .....</b>	<b>9</b>
4.1. Order Response.....	9
4.2. Order Response Line Item .....	12
4.3. Order Response Line Item Detail.....	15
4.4. Code Lists .....	17
<b>5. Business Message Examples .....</b>	<b>17</b>
5.1. Example 1 .....	17
5.2. Example 2 .....	18
5.3. Example 3 .....	18
<b>6. Implementation Considerations .....</b>	<b>20</b>
6.1. User Guide .....	20
6.2. Use of Order Response Line Item Detail .....	20
6.3. Guidance on amounts in Order Response Line Item.....	22
<b>7. Summary of Changes.....</b>	<b>23</b>
7.1. BMS Release 3.0 .....	23
7.2. BMS Release 3.1 .....	24
7.3. BMS Release 3.2 .....	25
<b>8. Appendices .....</b>	<b>26</b>
<b>9. Acknowledgements .....</b>	<b>26</b>
9.1.1. Work Group .....	26
9.1.2. Development Team Members .....	28

# 1. Business Domain View

## 1.1. Introduction

### Message Definition

The Order Response provides the ability for a supplier to respond to an order previously sent by the buyer.

### Principles

The Order Response allows the seller to inform the buyer about:

- The acceptance of the entire order as transmitted or
- The acceptance of the order with modifications on items (substitutes), quantities, prices and or dates or
- The rejection of the entire order.

The same Order Response is used to respond both to the Order and Configure to Order messages.

## 1.2. References

Reference Number	Reference Name	Description
Ref 1	BMS Common Library	BMS Release Version 2.4
Ref 2	BRD OFSCI Order	BRD Version 1.0
Ref 3	BRD Order Receipt Acknowledgement	BRD Version 0.3
Ref 4	BMS Application Receipt Acknowledgement	BMS Version 2.0.2
Ref 5	BMS Common Library	BMS Release Version 2.6.0
Ref 6	BMS eCom Domain Common Library	BMS Release Version 3.2.0
Ref 7	BMS Shared Common Library	BMS Release Version 3.2.0

# 2. Business Context

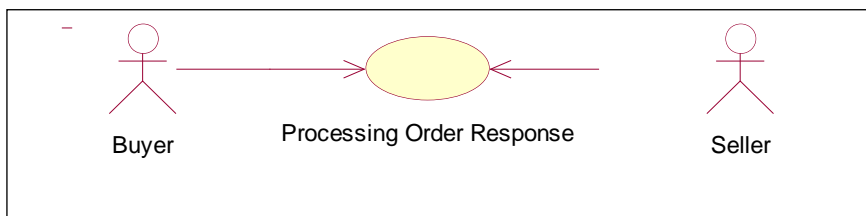
Context Category	Value(s)
Industry	All
Geopolitical	All
Product	All
Process	Order
System Capabilities	All
Official Constraints	None

### 3. Business Transaction View

#### 3.1. Business Transaction – Processing Order Response

##### Use Case Diagram

**Figure 3-1** Processing Order Response Use Case Diagram



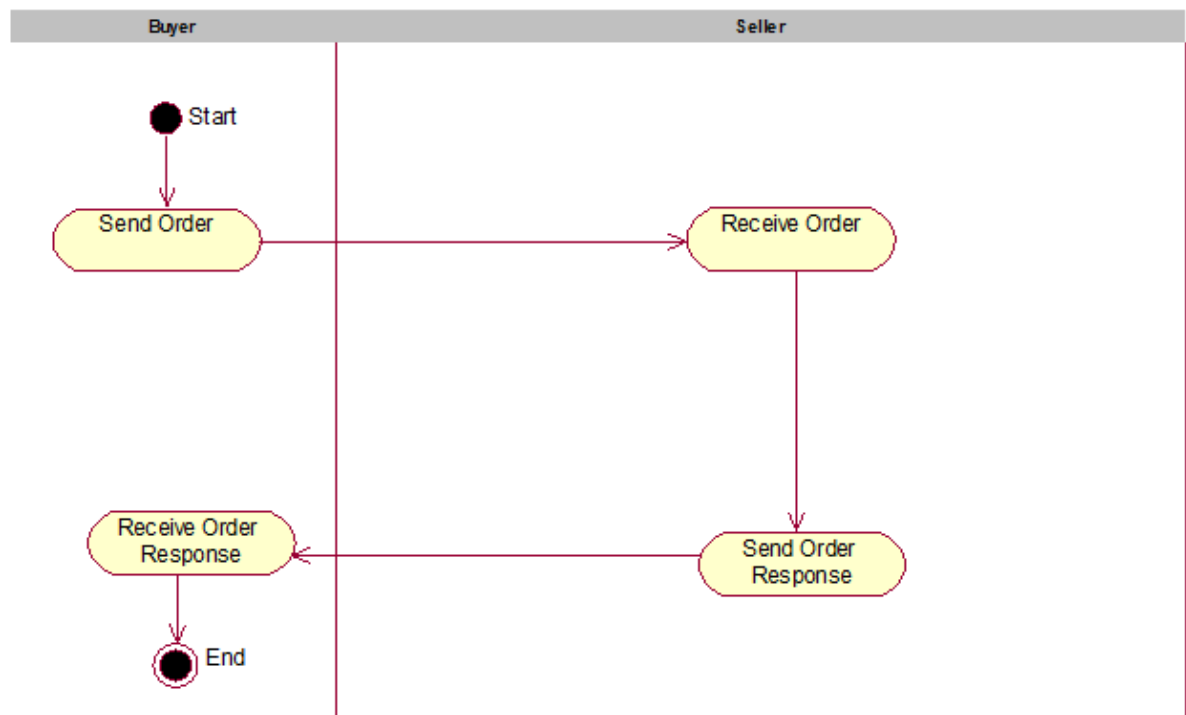
##### Use Case Description

<b>Use Case ID</b>	UC-1
<b>Use Case Name</b>	<b>Processing Order Response</b>
<b>Use Case Description</b>	<p>The seller needs to inform the buyer about the:</p> <ul style="list-style-type: none"> <li>■ Acceptance of the entire order as transmitted.</li> <li>■ The acceptance of the order with modifications on items (substitutes), quantities, prices and/or dates with modification reason.</li> <li>■ Rejection of the entire order with rejection reason.</li> </ul>
<b>Actors (Goal)</b>	<p>Buyer (Process Order Response)</p> <p>Seller (Process Order Response)</p>
<b>Performance Goals</b>	None
<b>Preconditions</b>	<p>The following information should be pre aligned:</p> <ul style="list-style-type: none"> <li>■ Master Data Alignment</li> <li>■ A trading partner agreement is in place that identifies pre-agreed product substitution.</li> <li>■ A trading partner agreement may exist regarding Response Receipt Lead Time: The agreed on time that is allowed to elapse between when a Buyer sent an Order to the Seller and the Seller is to send an Order Response. To the Buyer</li> <li>■ The Seller has received the Order from the Buyer</li> </ul>
<b>Post conditions</b>	<ul style="list-style-type: none"> <li>■ Acceptance of the entire order as transmitted_:               <ul style="list-style-type: none"> <li>○ Buyer – Knows that the order has been accepted and has received an Order Response</li> <li>○ Seller – Has agreed to fulfil the order in full</li> </ul> </li> <li>■ Acceptance of the order with modifications :               <ul style="list-style-type: none"> <li>○ Buyer – Knows that the order has been accepted and has received an Order Response.</li> <li>○ Seller – Has agreed to fulfil the order with modifications on items (substitutes), quantities, prices and/or dates with modification reason</li> </ul> </li> <li>■ Rejection of the entire order.               <ul style="list-style-type: none"> <li>○ Buyer – Knows that the order has been rejected and has received an Order Response</li> <li>○ Seller – Has rejected the order in full with rejection reason</li> </ul> </li> </ul>

Scenario	Begins when the seller receives an order from the buyer		
	Continues with...		
	Step #	Actor	Activity Step
	1	Seller	Decides to accept the order with no modifications
	2	Seller	If not, the Seller decides: <ul style="list-style-type: none"><li>to accept the order with modifications on items (substitutes), quantities, prices and/or dates with modification reason</li><li>whether to reject the entire order with rejection reason</li></ul>
3	Seller	Sends an Order Response	
Ends when the buyer has received the order response from the seller.			
Alternative Scenario	None		
Related Requirements	None		
Related Rules	1	If the order is accepted as transmitted, there is no item level information needed in the order response. The response status submitted within the order response must be ACCEPTED.	
	2	If the order is accepted with modifications on the item level, only the changed items need to be included in the order response.  For each changed item, all product attributes, not only the changed ones, have to be transmitted in the order response.  A reference to the line number in the original order must be used. If a substitute article with a new GTIN is used, the GTIN of the new article is indicated in the substituteItemInformation.  The response status within the order response must be MODIFIED, and the seller may provide the modification reason.	
	3	If the order is accepted with modifications in the orderLogisticalDateGroup, the whole group including all attributes, not only the changed ones, must be transmitted in the order response. The response status within the order response must be MODIFIED, and the seller may provide the modification reason.	
	4	In the case of substitutions, the order line will be returned with the product identification associated with the substituted item, quantity and the original line number. This will detail the new product and quantity based on the agreed substitution rules (as per trading partner agreement)	
	5	If the order is rejected, there is no item level information needed in the order response.  The response status submitted within the order response must be REJECTED, and the seller may provide the rejection reason.	

## Business Transaction Activity Diagram

**Figure 3-3** Order Response Activity Diagram

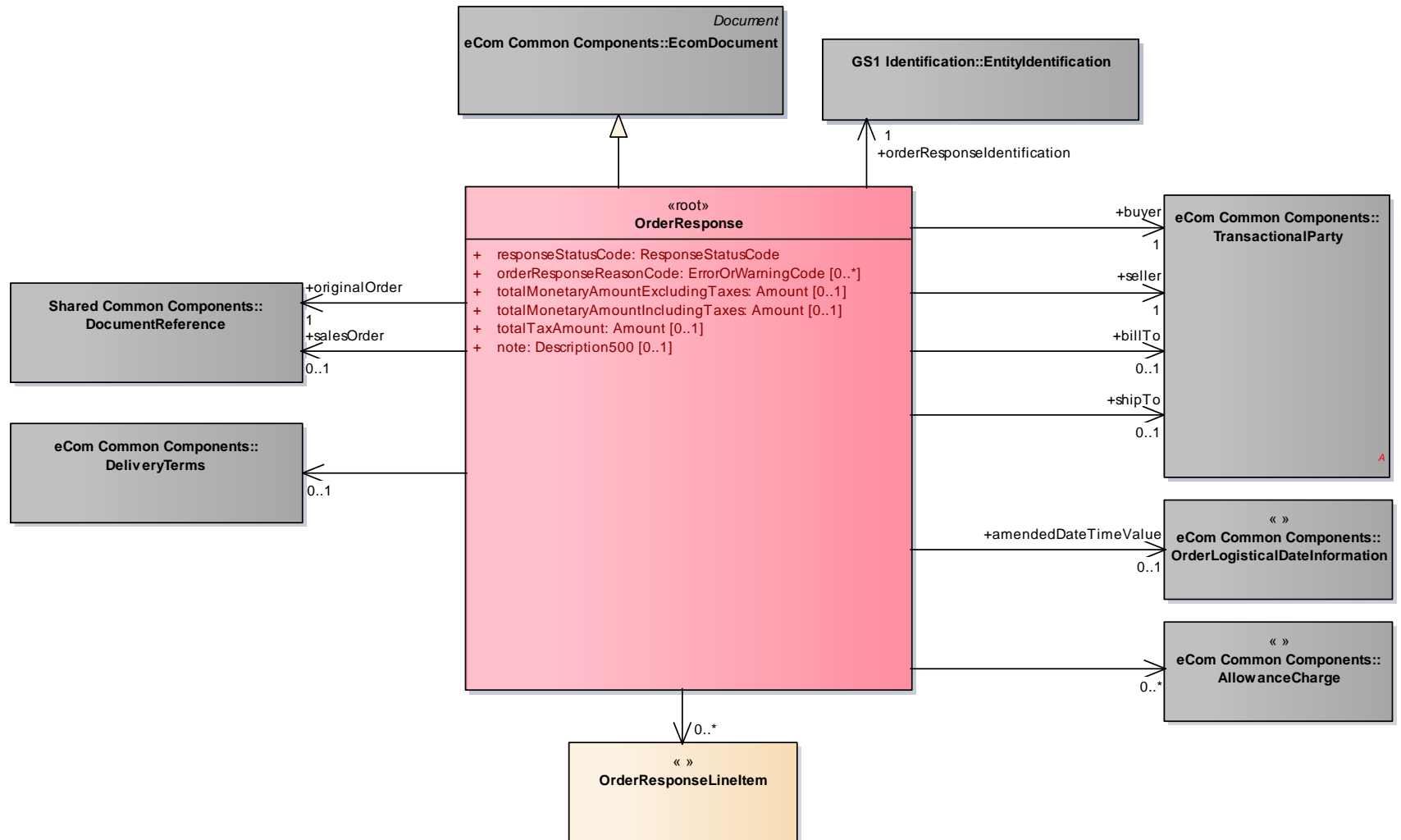




## 4. Business Information View

### 4.1. Order Response

#### Class Diagram



## GDD Report

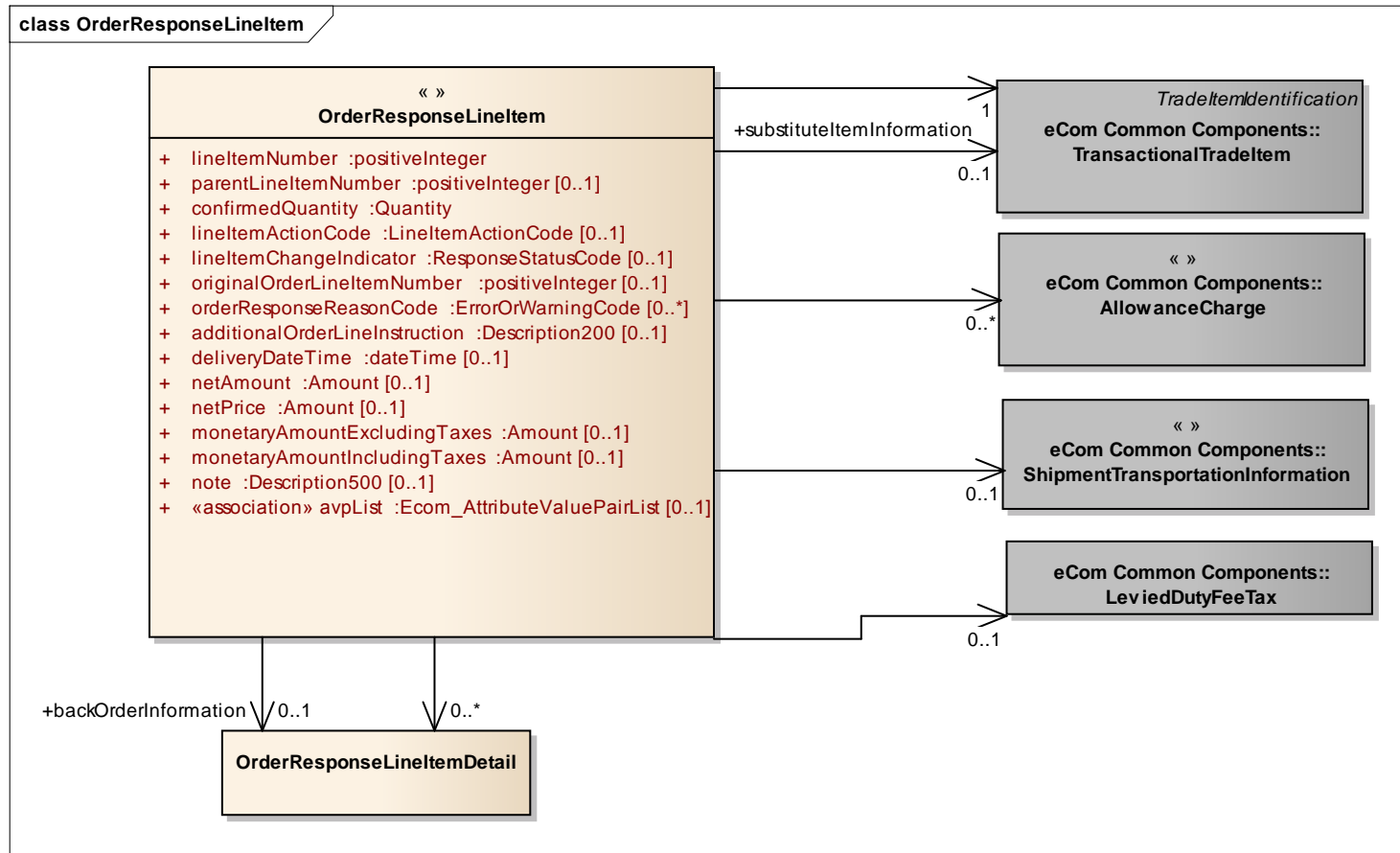
The content of the OrderResponse class, its structure and component definitions can be accessed in the Global Data Dictionary:  
[http://apps.gs1.org/GDD/bms/Version3\\_2/Pages/bieDetails.aspx?semanticURN=urn:gs1:gdd:bie:OrderResponse](http://apps.gs1.org/GDD/bms/Version3_2/Pages/bieDetails.aspx?semanticURN=urn:gs1:gdd:bie:OrderResponse)

Content	Attribute / Role	Datatype / Secondary class	Multiplicity	Definition	Requirements
OrderResponse				Provides the ability for a supplier to respond to an order previously sent by the buyer.	
Association	orderResponseIdentification	EntityIdentification	1..1	The unique identification of the Order Response.	
Association		AllowanceCharge	0..*	Provide the ability to share details regarding the allowance and charges.	
Association		OrderResponseLineItem	0..*	Contains the modifications per line item on items (substitutes), quantities, prices of the original order.	
Association	salesOrder	DocumentReference	0..1	Reference number assigned by the supplier to a buyer's purchase order.	
Generalization		EcomDocument		Basic information about the content of the message including version number, creation date and time.	WR 14-000110
Association	buyer	TransactionalParty	1..1	Identifies the party to which products or services are sold.	
Association	shipTo	TransactionalParty	0..1	Identifies the destination location to which goods will be shipped.	
Association		DeliveryTerms	0..1	The applicable legal, customs, financial and insurance terms that have been agreed for a goods delivery.	
Association	seller	TransactionalParty	1..1	Identifies the party which sells products or services to a buyer.	
Association	originalOrder	DocumentReference	1..1	Reference to the order on which the response is based.	
Association	amendedDateTimeValue	OrderLogisticalDateInformation	0..1	Contains the modifications on dates or date ranges of the original order.	
Association	billTo	TransactionalParty	0..1	Identifies the party which receives the invoice.	

Content	Attribute / Role	Datatype / Secondary class	Multiplicity	Definition	Requirements
Attribute	responseStatusCode	ResponseStatusCode	1..1	Code specifying the type of response. Example: Accepted.	
Attribute	orderResponseReasonCode	ErrorOrWarningCode	0..*	Order Response Reason Code is defined as the code identifying the reason for the order response rejection or modification.	
Attribute	totalMonetaryAmountExcludingTaxes	Amount	0..1	The total monetary amount of the purchase order excluding all taxes.	renamed from totalMonetaryAmountOfOrderExcludingTaxes
Attribute	totalMonetaryAmountIncludingTaxes	Amount	0..1	The total monetary amount of the Purchase Order including all Taxes. This field is needed to allow effective purchase order and invoice total value reconciliation.	
Attribute	totalTaxAmount	Amount	0..1	The total tax amount of the purchase order.	
Attribute	note	Description500	0..1	Free text used to convey information that is not processed by applications. Only meant to present the information to a user as on a screen, in a browser, etc.	BRAD RQ 09.236.F

## 4.2. Order Response Line Item

### Class Diagram



## GDD Report

The content of the OrderResponseLineItem class, its structure and component definitions can be accessed in the Global Data Dictionary: [http://apps.gs1.org/GDD/bms/Version3\\_2/Pages/bieDetails.aspx?semanticURN=urn:gs1:gdd:bie:OrderResponseLineItem](http://apps.gs1.org/GDD/bms/Version3_2/Pages/bieDetails.aspx?semanticURN=urn:gs1:gdd:bie:OrderResponseLineItem)

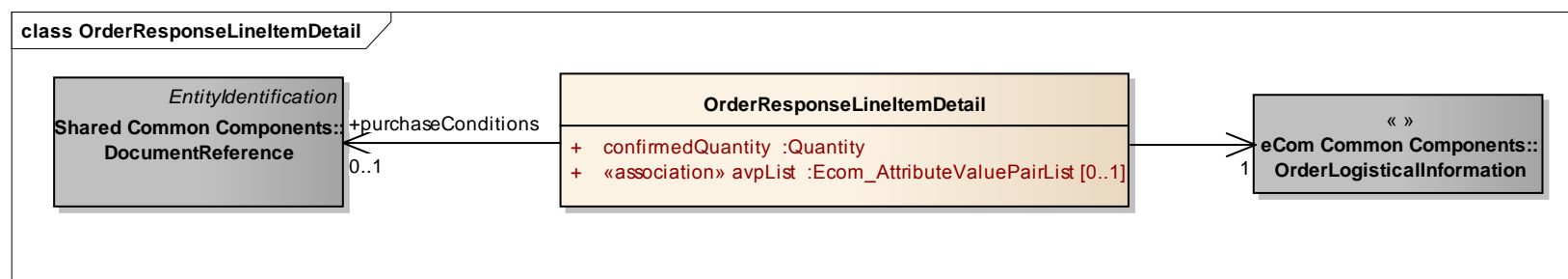
Content	Attribute / Role	Datatype / Secondary class	Multiplicity	Definition	Requirements
OrderResponseLineItem				Contains the modifications per line item on items (substitutes), quantities, prices and/or of the original order.	
Association	substituteItemInformation	TransactionalTradeItem	0..1	The substitute trade item associated to the Order Response Line Item. This item replaces the item that was originally requested.	
Association		OrderResponseLineItemDetail	0..*	Allows the identification of various shipping details by Order Response Line Item, for example in case of split deliveries.	
Association		TransactionalTradeItem	1..1	The trade item associated to the Order Response Line Item.	
Association		AllowanceCharge	0..*	Provide the ability to share details regarding the allowance and charges.	
Association		LeviedDutyFeeTax	0..1	The tax applicable to the Order Line Item.	
Association	backOrderInformation	OrderResponseLineItemDetail	0..1	Contains the information for units that are unable to be shipped at this time. These units will be shipped at a later time.	
Association		ShipmentTransportationInformation	0..1	Contains the identification of the carrier and mode associated with the transportation of the goods or services.	
Attribute	lineItemNumber	positiveInteger	1..1	Provides the line number associated to the Order Response Line Item.	
Attribute	parentLineItemNumber	positiveInteger	0..1	The number of line item containing information about the parent of the current item. It allows establishing hierarchical link between the two items.	WR 14-000021 WR 14-000044

Content	Attribute / Role	Datatype / Secondary class	Multiplicity	Definition	Requirements
Attribute	confirmedQuantity	Quantity	1..1	The quantity which has been confirmed by the seller.	MR3 renamed from requestedQuantity
Attribute	lineItemActionCode	LineItemActionCode	0..1	Provides the activity required by the recipient on the line item of this order line item.	
Attribute	lineItemChangeIndicator	ResponseStatusCode	0..1	Provides the response in the order response line item level.	
Attribute	originalOrderLineItemNumber	positiveInteger	0..1	A reference to the original order line item number.	
Attribute	orderResponseReasonCode	ErrorOrWarningCode	0..*	Order Response Reason Code is defined as the code identifying the reason for the order response rejection or modification.	
Attribute	additionalOrderLineInstruction	Description200	0..1	Additional Order Line Instruction captures information that has not been previously synchronised and is ad-hoc in nature. This field should only be used in exception circumstances if the information cannot be codified. Examples of Purchase Order Line: Use chrome hinges (not standard brass hinges) Please use timber; Please prime (paint) door and jamb and pre-hang door	
Attribute	deliveryDateTime	dateTime	0..1	Provides the delivery date time the goods will be delivered to the desired destination.	
Attribute	netAmount	Amount	0..1	Identifies the total net amount of the line item.	
Attribute	netPrice	Amount	0..1	Identifies the net price of the item.	
Attribute	monetaryAmountExcluding Taxes	Amount	0..1	The total monetary amount of the order response line excluding all taxes.	
Attribute	monetaryAmountIncluding Taxes	Amount	0..1	The total monetary amount of the Order Response Line including taxes.	

Content	Attribute / Role	Datatype / Secondary class	Multiplicity	Definition	Requirements
Attribute	note	Description500	0..1	Free text used to convey information that is not processed by applications. Only meant to present the information to a user as on a screen, in a browser, etc.	BRAD RQ 09.236.F
Attribute	avpList	Ecom_AttributeValuePairList	0..1	Temporary attributes introduced between minor versions.	WR 14-000110

### 4.3. Order Response Line Item Detail

#### Class Diagram



#### GDD Report

The content of the OrderResponseLineItemDetail class, its structure and component definitions can be accessed in the Global Data Dictionary:

[http://apps.gs1.org/GDD/bms/Version3\\_2/Pages/bieDetails.aspx?semanticURN=urn:gs1:gdd:bie:OrderResponseLineItemDetail](http://apps.gs1.org/GDD/bms/Version3_2/Pages/bieDetails.aspx?semanticURN=urn:gs1:gdd:bie:OrderResponseLineItemDetail)

Content	Attribute / Role	Datatype / Secondary class	Multiplicity	Definition	Requirements
OrderResponseLineItemDetail				Allows the identification of various shipping details by Order Response Line Item.	

Content	Attribute / Role	Datatype / Secondary class	Multiplicity	Definition	Requirements
Association		OrderLogisticalInformation	1..1	Provides identification of the locations of the parties dealing with the goods associated with the order, as well as the dates or date ranges associated with the order and the transportation of the shipment associated with the order.	
Association	purchaseConditions	DocumentReference	0..1	A reference to the purchase conditions. The reference is associated with specific items in the order.	
Attribute	confirmedQuantity	Quantity	1..1	The quantity which has been confirmed by the seller.	MR3 renamed from requestedQuantity
Attribute	avpList	Ecom_AttributeValuePairList	0..1	Temporary attributes introduced between minor versions.	WR 14-000110



**Note:** Reference Shared Common Library Business Message (BMS) Release 3.2.0 and eCom Domain Common Library Business Message (BMS) Release 3.2.0 for all common information.



## 4.4. Code Lists



**Note:** Refer to the Global Data Dictionary (GDD) for the code values.

Class	Codelist	Referenced in
OrderResponse & OrderResponseLinItem	ErrorOrWarningCode	<a href="http://apps.gs1.org/GDD/Pages/clDetails.aspx?semanticURN=urn:gs1:gdd:cl:ErrorOrWarningCode">http://apps.gs1.org/GDD/Pages/clDetails.aspx?semanticURN=urn:gs1:gdd:cl:ErrorOrWarningCode</a>
OrderResponse & OrderResponseLinItem	ResponseStatusCode	<a href="http://apps.gs1.org/GDD/Pages/clDetails.aspx?semanticURN=urn:gs1:gdd:cl:ResponseStatusCode">http://apps.gs1.org/GDD/Pages/clDetails.aspx?semanticURN=urn:gs1:gdd:cl:ResponseStatusCode</a>
OrderResponseLinItem	LinItemActionCode	<a href="http://apps.gs1.org/GDD/Pages/clDetails.aspx?semanticURN=urn:gs1:gdd:cl:LinItemActionCode">http://apps.gs1.org/GDD/Pages/clDetails.aspx?semanticURN=urn:gs1:gdd:cl:LinItemActionCode</a>

## 5. Business Message Examples

### 5.1. Example 1

This is an example of the Order Response message that informs that the Order will be fulfilled as requested.

#### Party Information

GS1 Global Location Number	Party Type
5412345000013	Buyer
4098765000010	Seller

A Seller (GLN 4098765000010) has received an Order (PO3352) from the Buyer (GLN 5412345000013) and is sending response: Acceptance of the entire order as transmitted.

The Order Response identification number is: OR002760 and it is created on March 12<sup>th</sup> 2011 at 10:00 AM.

#### Message Example 1

Attribute	Value
<b>OrderResponse</b>	
responseStatusCode	ACCEPTED
<b>Document</b>	
creationDateTime	2011-02-12 10:00
documentStatusCode	ORIGINAL
<b>Entity Identification (+orderResponseIdentification)</b>	
entityIdentification	OR002760
contentOwner	4098765000010
<b>DocumentReference (+originalOrder)</b>	
entityIdentification	PO3352

Attribute	Value
<b>TransactionalParty (+buyer)</b>	
gln	5412345000013
<b>TransactionalParty (+seller)</b>	
gln	4098765000010

## 5.2. Example 2

This is an example of the Order Response message that informs that the Order cannot be fulfilled.

### Party Information

GS1 Global Location Number	Party Type
5412345000013	Buyer
4098765000010	Seller

A Seller (GLN 4098765000010) has received an Order (PO3352) from the Buyer (GLN 5412345000013) and is sending response: Rejection of the entire order. The reason for rejection is product was discontinued.

The Order Response identification is: OR003895 and it is created on March 12<sup>th</sup> 2011 at 10:00 AM.

### Message Example 2

Attribute	Value
<b>OrderResponse</b>	
responseStatusCode	REJECTED
orderResponseReasonCode	DISCONTINUED_LINE
<b>Document</b>	
creationDateTime	2011-03-12 10:00
documentStatusCode	ORIGINAL
<b>Entity Identification (+orderResponseIdentification)</b>	
entityIdentification	OR003895
contentOwner	4098765000010
<b>DocumentReference (+originalOrder)</b>	
entityIdentification	PO3352
<b>TransactionalParty (+buyer)</b>	
gln	5412345000013
<b>TransactionalParty (+seller)</b>	
gln	4098765000010

## 5.3. Example 3

This is an example of the Order Response message that informs that the Order can be fulfilled with some modifications.

### Party Information

GS1 Global Location Number	Party Type
5412345000013	Buyer
4098765000010	Seller

A Seller (GLN 4098765000010) has received an Order from the Buyer (GLN 5412345000013) and is sending response.

The identification number of the Order is PO3352, it was received on 11<sup>th</sup> of April 2011, the delivery was requested on the 11<sup>th</sup> of April 2011.

### The buyer ordered the following:

GS1 Global Trade Item Number (GTIN)	Quantity
40987650001336	48
40987650000896	24

The Seller has accepted the order. The item identified with GTIN 40987650000223 can be delivered as requested. However, the trade item identified with GTIN 40987650000346 is not available and it will be substituted by the trade item identified with GTIN 409876500003484. The reason for modification is product is out of stock.

The Order Response identification number is: OR 1211 and it was created on March 12<sup>th</sup> 2011 at 10:00 AM.

### Message Example 3

Attribute	Value
<b>OrderResponse</b>	
responseStatusCode	MODIFIED
<b>Document</b>	
creationDateTime	2011-03-12 10:00
documentStatusCode	ORIGINAL
<b>Entity Identification (+orderResponseIdentification)</b>	
entityIdentification	OR1211
contentOwner	4098765000010
<b>DocumentReference (+originalOrder)</b>	
entityIdentification	PO3352
<b>TransactionalParty (+buyer)</b>	
gln	5412345000013
<b>TransactionalParty (+seller)</b>	
gln	4098765000010
<b>OrderResponseLineItem *1</b>	
lineItemNumber	1
confirmedQuantity	48
lineItemChangeIndicator	ACCEPTED
originalOrderLineItemNumber	1

Attribute	Value
<b>TransactionalTradeItem</b>	
gtin	40987650000223
<b>OrderResponseLineItem *2</b>	
lineItemNumber	2
confirmedQuantity	24
lineItemChangeIndicator	MODIFIED
originalOrderLineItemNumber	2
orderResponseReasonCode	PRODUCT_OUT_OF_STOCK
<b>TransactionalTradeItem</b>	
gtin	40987650000346
<b>TransactionalTradeItem (+substituteItemInformation)</b>	
gtin	40987650003484

## 6. Implementation Considerations

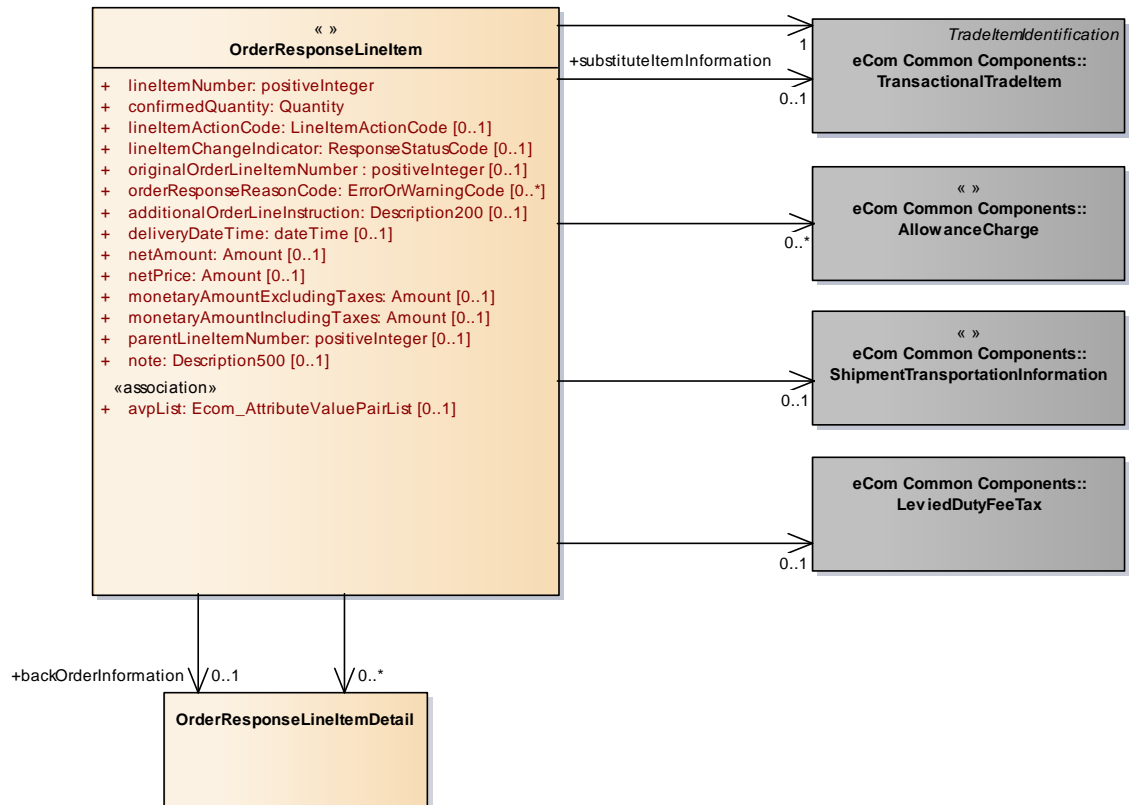
### 6.1. User Guide

The Functional User Guide contains more information about the structure and content of the message:  
[http://www.gs1.org/docs/ecom/xml/3/3.2/eCom-Trade\\_messages.html#OrderResponse](http://www.gs1.org/docs/ecom/xml/3/3.2/eCom-Trade_messages.html#OrderResponse)

### 6.2. Use of Order Response Line Item Detail

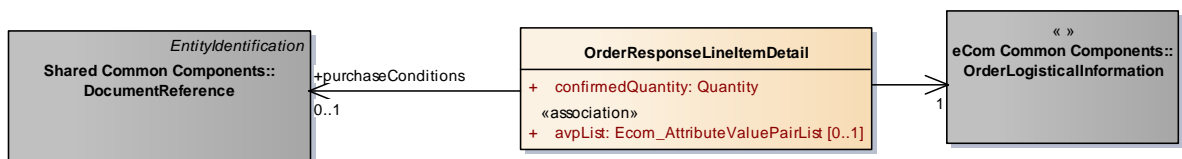
There are two distinctly different uses of the OrderResponseLineItemDetail class.

Figure 2 Class Diagram of OrderResponseLineItem

**Usage 1 – Specification of the units are being shipped**

Within the **OrderResponseLineItemDetail** class, the attribute 'confirmedQuantity' represents the quantity being shipped.

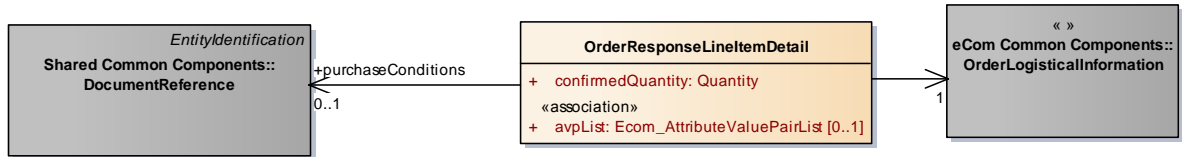
Figure 3 OrderResponseLineItemDetail



**Note:** For Reference Purposes only to provide visibility for this example.

## Usage 2 – Specification of the units that are placed on backorder

**Figure 4 OrderResponseLineItemDetail (+backOrderInformation)**



The class gets roleName **+backOrderInformation**. Now, within the **OrderResponseLineItemDetail** class, the attribute 'confirmedQuantity' represents the quantity that is on backorder, to be shipped at another time. The backorder shipment dates, if known, can be sent in **OrderLogisticalInformation** which is associated with **OrderResponseLineItemDetail**.

### 6.3. Guidance on amounts in Order Response Line Item

The amounts in the order response line item may be applied in combination with each other as follows:

- $\text{netAmount} = \text{requestedQuantity} * \text{netPrice},$
- $\text{amountExcludingTaxes} = \text{netAmount} + (\text{allowances} \ \& \ \text{charges})$
- $\text{amountIncludingTaxes} = \text{netAmount} + (\text{allowances} \ / \ \text{charges}) + (\text{taxes})$

## 7. Summary of Changes

Any change in the GS1 standards is done based on the Work Request (WR) submitted by the GS1 User Companies or Member Organisations. All Work Requests are documented in the Work Request system available on the GS1 website: <http://wr.gs1.org>. The system is accessible to registered users. New visitors need to register first, to be able to access it. WRs can be searched by the number referenced in tables below, see: Search Work Requests. The number starts with the two last digits of the year when it was submitted, followed by the consecutive number within that year.



**Note:** WRs submitted earlier than February 2012 should be searched in Old Change Requests.

### 7.1. BMS Release 3.0

Change	BSD Version	Associated CR Number
<b>For BMS Release 3.0.0:</b> <ul style="list-style-type: none"> <li>Update based on requirements in the Current Requirements Queue.</li> <li>The message has also been remodelled to be consistent with Major Release 3.0.0.</li> <li>Updated class diagrams and GDD reports, as well as the example and test data sections.</li> </ul> <b>After Peer Review:</b> <ul style="list-style-type: none"> <li>Included the code lists and enumerations and reference where they can be found (eCom or Shared Common).</li> <li>The version of the document set to 1.0.0.</li> <li>Document change history wiped clean except for the latest version.</li> <li>In context, Geopolitical set to All instead of Global.</li> <li>Page 12 is not blank anymore</li> <li>Random order issue in GDD Report solved</li> <li>Removed 2 associations from Order Response Line Item to Shipment Detail that do not appear in the model.</li> <li>Associations from OrderResponse to EntityIdentification and Document Reference were missing Multiplicity in both the class diagram and the GDD report. Set both to 1..1</li> <li>Missing definitions in GDD Report solved for: <ul style="list-style-type: none"> <li>OrderResponseLineItemDetail: Documentreference</li> <li>+purchaseConditions / OrderLogisticalInformation</li> </ul> </li> </ul> <b>After TSD Development:</b> <ul style="list-style-type: none"> <li>removed in test data reference to non existing elements</li> <li>referenceDocumentType, replaced by entityIdentification</li> </ul>	1.0.0	09-236, 09-238,09-240
<b>For BMS Publication:</b> <ul style="list-style-type: none"> <li>Updated date in footer</li> <li>Removed year in footer copyright statement</li> <li>Renamed uniqueCreatorIdentification into entityIdentification in examples</li> <li>Changed lowerCamelCase into lowercase for all GS1 keys in examples</li> <li>Replaced architectural principles section with the correct one.</li> </ul>	1.0.0	

## 7.2. BMS Release 3.1

Change	Document version	Associated CR Number
<p><b>class OrderResponse - maintenance view</b></p> <div> <p><b>OrderResponse</b></p> <ul style="list-style-type: none"> <li>+ responseStatusCode: ResponseStatusCode</li> <li>+ orderResponseReasonCode: ErrorOrWarningCode [0..*]</li> <li>+ totalMonetaryAmountExcludingTaxes: Amount [0..1]</li> <li>+ totalMonetaryAmountIncludingTaxes: Amount [0..1]</li> <li>+ totalTaxAmount: Amount [0..1]</li> <li>+ note: Description500 [0..1]</li> </ul> <p><b>maintenance</b></p> <p>Change: (New) 3.1 added association +billTo (WR 09-248)            Change: (New) 3.1 added association +salesOrder (WR 12-251)            Change: (New) 3.1 added association +shipTo (WR 09-248)            Change: (New) 3.1 added association to DeliveryTerms            Change: (New) 3.1 added totalMonetaryAmountIncludingTaxes (WR 12-212)</p> </div>	Issue 1	WR 09-248 WR 09-249 WR 12-154 WR 12-212 WR 12-213 WR 12-251
<p><b>class OrderResponseLineItem - maintenance view</b></p> <div> <p>« »</p> <p><b>OrderResponseLineItem</b></p> <ul style="list-style-type: none"> <li>+ lineItemNumber: positiveInteger</li> <li>+ confirmedQuantity: Quantity</li> <li>+ lineItemActionCode: LineItemActionCode [0..1]</li> <li>+ lineItemChangeIndicator: ResponseStatusCode [0..1]</li> <li>+ originalOrderLineItemNumber: positiveInteger [0..1]</li> <li>+ orderResponseReasonCode: ErrorOrWarningCode [0..*]</li> <li>+ additionalOrderLineInstruction: Description200 [0..1]</li> <li>+ deliveryDateTime: dateTime [0..1]</li> <li>+ netAmount: Amount [0..1]</li> <li>+ monetaryAmountExcludingTaxes: Amount [0..1]</li> <li>+ monetaryAmountIncludingTaxes: Amount [0..1]</li> <li>+ netPrice: Amount [0..1]</li> <li>+ note: Description500 [0..1]</li> </ul> <p><b>maintenance</b></p> <p>Change: (Verified) 3.1 added monetaryAmountExcludingTaxes (WR 12-213)            Change: (Verified) 3.1 added monetaryAmountIncludingTaxes (WR 12-213)</p> </div> <p>■ Added 6.2 Guidance on amounts in Order Response Line Item, and corrected the guidance in paragraph 6.1 on Order Response Line Item Detail</p>		



## 7.3. BMS Release 3.2

Change	Associated WR
<p>Added Attribute Value Pair at the root, line item and sub line item levels</p> <div> <p><b>class OrderResponse - maintenance view</b></p> <pre> «root» OrderResponse + responseStatusCode :ResponseStatusCode + orderResponseReasonCode :ErrorOrWarningCode [0..*] + totalMonetaryAmountExcludingTaxes :Amount [0..1] + totalMonetaryAmountIncludingTaxes :Amount [0..1] + totalTaxAmount :Amount [0..1] + note :Description500 [0..1]  maintenance Change: (Complete) 3.1 added association +billTo (WR 09-248) Change: (Complete) 3.1 added association +salesOrder (WR 12-251) Change: (Complete) 3.1 added association +shipTo (WR 09-248) Change: (Complete) 3.1 added association to DeliveryTerms Change: (Complete) 3.1 added totalMonetaryAmountIncludingTaxes (WR 12-212) Change: (Verified) 3.2 changed generalisation from Document to eComDocument class to include AVP (WR 14-110) </pre> </div>	14-000110
<ul style="list-style-type: none"> <li>Added a reference to parent line number to all Lineltem classes, to support hierarchical items (WRs 14-021 &amp; 14-044)</li> <li>Added Attribute Value Pair at the root, line item and sub line item levels (WR 14-110)</li> </ul> <div> <p><b>class OrderResponseLineltem - maintenance view</b></p> <pre> « » OrderResponseLineltem + lineltemNumber :positiveInteger + parentLineltemNumber :positiveInteger [0..1] + confirmedQuantity :Quantity + lineltemActionCode :LineltemActionCode [0..1] + lineltemChangeIndicator :ResponseStatusCode [0..1] + originalOrderLineltemNumber :positiveInteger [0..1] + orderResponseReasonCode :ErrorOrWarningCode [0..*] + additionalOrderLinelInstruction :Description200 [0..1] + deliveryDateTime :dateTime [0..1] + netAmount :Amount [0..1] + netPrice :Amount [0..1] + monetaryAmountExcludingTaxes :Amount [0..1] + monetaryAmountIncludingTaxes :Amount [0..1] + note :Description500 [0..1] + «association» avpList :Ecom_AttributeValuePairList [0..1]  maintenance Change: (Complete) 3.1 added monetaryAmountExcludingTaxes (WR 12-213) Change: (Complete) 3.1 added monetaryAmountIncludingTaxes (WR 12-213) Change: (Verified) 3.2 added +avpList (WR 14-110) Change: (Verified) 3.2 added +parentLineltemNumber (WR 14-021 &amp; 14-044) </pre> </div>	14-000021 14-000044 14-000110

Change	Associated WR
<p>Added Attribute Value Pair at the root, line item and sub line item levels</p> <div> <p><b>class OrderResponseLineItemDetail - maintenance view</b></p> <div> <p><b>OrderResponseLineItemDetail</b></p> <p>+ confirmedQuantity :Quantity</p> <p>+ «association» avpList :Ecom_AttributeValuePairList [0..1]</p> <p><i>maintenance</i></p> <p>Change: (Verified) 3.2 added +avpList (WR 14-110)</p> </div> </div>	14-000110

## 8. Appendices

Not applicable.

## 9. Acknowledgements

The following is a list of individuals (and their companies) who participated in the creation, review and approval of this BMS.

### 9.1.1. Work Group

Function	Name	Company / organisation
Co-chair	Rossner (Pottier), Natascha	GS1 France
Co-chair	Schmidt, Tom Eric	August Storck KG
Member	Bemrose, Jonathan	R&R Ice Cream
Member	Bodemer, Petra	dm-drogerie markt GmbH + Co. KG
Member	Boikanyo, Rebone	GS1 South Africa / Consumer Goods Council of South Africa
Member	Canada, ON	M3B 3L1
Member	Carlson, Jim	General Mills, Inc.
Member	Chresta, Richard	GS1 Switzerland
Member	Cook, Don	Wal-Mart Stores, Inc.
Member	Cox, Marc	Philips Electronics N.V.
Member	Darnell, David	Systrends
Member	De Flou, Nele	GS1 Belgium & Luxembourg
Member	Dicks, Arne	GS1 Germany
Member	Duvinger, Karina	GS1 Sweden
Member	Foerderer, Klaus	GS1 Germany
Member	Gathmann, Stefan	GS1 Ireland

Function	Name	Company / organisation
Member	Grangard, Anders	GS1 Global Office
Member	Harpell, Eileen	GS1 Community Room Staff
Member	Herregodts, Kurt	GS1 Belgium & Luxembourg
Member	Kempkes, Fred	Unilever N.V.
Member	Kernan, Brendan	GS1 Ireland
Member	Kidd, Robin	Nestle
Member	Krid, Anne-Claire	GS1 France
Member	Lanoue, Tom	General Mills, Inc.
Member	Laur, Rita	GS1 Canada
Member	Lenman, Mia	GS1 Sweden
Member	Lerch, Hanjoerg	METRO Group
Member	Moberg, Dale	Axway
Member	Montes de Oca, Alejandra	GS1 Mexico
Member	Ng, Ella	GS1 Australia
Member	Peelen, Esther	GS1 Netherlands
Member	Pelekies, Andreas	GS1 Germany
Member	Perrier, Patricia	GS1 France
Member	Przybilla, Christian	GS1 Germany
Member	Pujol, Xavier	GS1 Spain
Member	Racek, Greg	Wal-Mart Stores, Inc.
Member	Repetto, Mirko	GS1 Italy
Member	Robba, Steven	1WorldSync Holdings, Inc.
Member	Rosell, Pere	GS1 Spain
Member	Rosenberg, Steven	GS1 US
Member	Schmid, Sue	GS1 Australia
Member	Schneider, Christian	GS1 Switzerland
Member	Sehorz, Eugen	GS1 Austria
Member	Sharma, Vishal	General Mills, Inc.
Member	Shimazaki, Ayako	GS1 Japan
Member	Sion, Emilie	GS1 France
Member	Souza, Nadia	GS1 Brasil
Member	Strand, Roman	GS1 Germany
Member	Tan, Milton	GS1 Malaysia
Member	Tompsett, Simon	Waitrose
Member	Trelle, Ute	1WorldSync Holdings, Inc.
Member	Tse, Steve	GS1 Hong Kong
Member	Tyson, Betty	Knouse Foods Cooperative, Inc

Function	Name	Company / organisation
Member	Van den Bergh, Senne	GS1 Belgium & Luxembourg
Member	Van der Eijk, Pim	OASIS - Sonnenglanz Consulting BV
Member	Veldhuis, Saskia	Procter & Gamble Co.
Member	Welch, Shan	GS1 UK
Member	Westerkamp, Jan	GS1 Netherlands
Member	Wilson, Mary	GS1 US
Member	Windsperger, Bekki	Best Buy Co., Inc.
Member	Yang, Shaopeng	GS1 China
Member	Yusdiar, Dani	GS1 Indonesia
Member	Zwanziger, Greg	SUPERVALU

### 9.1.2. Development Team Members

Function	Name	Organisation
GSMP Process Lead	Jean-Luc Champion	GS1 Global Office
Standards Content Lead	Coen Janssen, Ewa Iwicka	GS1 Global Office
Technical Development Lead	Ewa Iwicka	GS1 Global Office
Peer Review	Eric Kauz	GS1 Global Office