



Business Message Standard (BMS) Despatch Advice

BMS Release: 3.0.0, BRG Name: eCom

Issue 5.0.0, 13-Jan-2012



Document Summary

Document Item	Current Value
Document Title	Business Message Standard (BMS)
BMS Name	Despatch Advice
BMS Release	3.0.0
BRG Name	eCom
Document Number	Issue 5.0.0
Date Last Modified	13-Jan-2012
Status	Approved
Owner	eCom BRG
BMS Template Version	1.9

Change Request Reference

Date of CR Submission to GSMP:	CR Submitter(s):	Refer to Change Request (CR) Number(s):
25-Feb-2010	GS1 Netherlands, Stef Spaan	10-000068
15-Oct-2009	GS1 Australia, GS1 Germany, GS1 Netherlands	09-000240
15-Oct-2009	GS1 Australia, GS1 Germany, GS1 Netherlands	09-000238
15-Oct-2009	GS1 Australia, GS1 Germany, GS1 Netherlands	09-000236
15-Oct-2009	GS1 Australia, GS1 Germany, GS1 Netherlands	09-000235
15-Oct-2009	GS1 Australia, GS1 Germany, GS1 Netherlands	09-000233
20-Aug-2008	John Ryu, GS1	08-000209
14-Mar-2008	Troy Denyer, GS1 Australia	08-000054
29-Feb-2008	Esther Peelen, GS1 Netherlands	08-000039
16-Nov-2007	Eric Maree, Accenture	07-000426
03-Jul-2007	John RYU, GS1 Global Office	07-000271
21-Mar-2007	Stef SPAAN, GS1 Netherlands	07-000103
30-Nov-2004	GS1	04-000224
09-Oct-2004	GS1 France	04-000178

Business Requirements Document (BRAD) Reference

BRAD Title:	BRAD Date:	BRAD Version
BRAD Despatch Advice Country of Processing and Origin	20070606	0.0.4
BRD Despatch Advice – Business Requirement Document	20041111	1.0.9.3
BRAD Upstream Standards – Despatch, Receipt and Consumption	20041129	0.1.1

BRAD Title:	BRAD Date:	BRAD Version
BRD Exchange Traceability and Processing History Data of Beef Products (Slaughter to Retail)	20051102	2.50
BRAD for Current Requirements Queue (Major Release 3)	20101123	Issue 0.2.0

Document Change History

Date of Change	Version	Changed By	Reason for Change	Summary of Change	Model Build #
13-Jan-2012	Issue 5.0.0	Mark Van Eeghem	BMS Release 3.0.0 Publication	Noted in Summary of Changes	Not Applicable

Disclaimer

WHILST EVERY EFFORT HAS BEEN MADE TO ENSURE THAT THE GUIDELINES TO USE THE GS1 STANDARDS CONTAINED IN THE DOCUMENT ARE CORRECT, GS1 AND ANY OTHER PARTY INVOLVED IN THE CREATION OF THE DOCUMENT HEREBY STATE THAT THE DOCUMENT IS PROVIDED WITHOUT WARRANTY, EITHER EXPRESSED OR IMPLIED, REGARDING ANY MATTER, INCLUDING BUT NOT LIMITED TO THE OF ACCURACY, MERCHANTABILITY OR FITNESS FOR A PARTICULAR PURPOSE, AND HEREBY DISCLAIM ANY AND ALL LIABILITY, DIRECT OR INDIRECT, FOR ANY DAMAGES OR LOSS RELATING TO OR RESULTING FROM THE USE OF THE DOCUMENT. THE DOCUMENT MAY BE MODIFIED, SUBJECT TO DEVELOPMENTS IN TECHNOLOGY, CHANGES TO THE STANDARDS, OR NEW LEGAL REQUIREMENTS. SEVERAL PRODUCTS AND COMPANY NAMES MENTIONED HEREIN MAY BE TRADEMARKS AND/OR REGISTERED TRADEMARKS OF THEIR RESPECTIVE COMPANIES. GS1 IS A REGISTERED TRADEMARK OF GS1 AISBL

Table of Contents

1. Business Domain View	6
1.1. Problem Statement / Business Need	6
1.2. Objective	6
1.3. Audience	6
1.4. References	6
1.5. Acknowledgements	7
1.5.1. Work Group	7
1.5.2. Design Team Members	9
1.5.3. Design Team Members	9
2. Business Context	10
3. Additional Technical Requirements Analysis	10
3.1. Technical Requirements	10
4. Business Transaction View	10
4.1. Business Transaction Generate Despatch Advice Use Case Diagram	10
4.1.1. Use Case Description	11
4.1.2. Business Transaction Activity Diagram	12
4.1.3. Business Transaction Sequence Diagram	12
4.2. Business Transaction Dispatch Notification Use Case Diagram	13
4.2.1. Use Case Description	13
4.3. Business Transaction Use Case Diagram Cross Dock Despatch Advice Diagram	14
4.3.1. Business Transaction Activity Diagram	14
4.3.2. Use Case Description Perform Cross Dock Despatch Advice Process	14
4.3.3. Business Transaction Activity Diagram	15
4.3.4. Business Transaction Sequence Diagram	15
5. Information Model (Including GDD Report)	16
5.1. GDD Reports	16
5.1.1. GDD Report: Despatch Advice	16
5.1.2. GDD Report: Despatch Advice Item Total	19
5.1.3. GDD Report: Despatch Advice Transport Information	20
5.1.4. GDD Report: Despatch Advice Line Item	21
5.1.5. GDD Report: Despatch Advice Logistic Unit	26
5.2. Class Diagrams	27
5.3. Code Lists	32
6. Business Document Example	32
6.1. Despatch Advice Business Example	32
6.2. Despatch Advice Cross Dock Business Example	34
7. Implementation Considerations	34

8. Testing	34
8.1. Pass / Fail Criteria.....	34
8.2. Test Data.....	34
8.2.1. Despatch Advice Test Data.....	34
8.2.2. Despatch Advice Cross Dock Test Data	36
9. Appendices	37
10. Adherence to Architectural Principles	38
11. Summary of Changes	40

1. Business Domain View

1.1. Problem Statement / Business Need

Generally, the Despatch Advice enables one Shipper to provide information about the content of a shipment to one Receiver. Specifically, the Despatch Advice serves as a link to a prior agreement between Shipper and Receiver and is applicable to one or many Receiver destination points from one Shipper launch point. Furthermore, the Despatch Advice may be used to indicate the despatch of goods being returned by the Receiver. The Despatch Advice may be utilized downstream between retailers, suppliers, 3PLs, carriers and manufacturers as well as upstream between manufacturers, 3PLs and material suppliers.

The cross dock requirements have been included as well. Standards for the delivering area include: a communication standard to advise the receiver about the shipment of the goods in combination with AIDC applications, like barcode labels, to link in an efficient way the physical flow of goods with the flow of related information.

For the cross dock scenario it's needed to include information in the information standard about:

- the cross dock and final destination of the delivery
- the requested delivery date/time on the cross dock and final destination

1.2. Objective

The objective of the Despatch Advice is:

- To facilitate the receipt of goods
- To make the despatch advice applicable to a replenishment scenario where there is no link to an order but to a contract or other kind of agreement.
- To make the despatch advice applicable to multiple destination points
- To provide more detailed information about the shipment as well as the content of a shipment from a shipper and if applicable the shipper's warehouse to the receiver and his warehouse
- To make the despatch advice applicable for the despatch of goods being returned

1.3. Audience

Retailers, manufacturers, warehouses, material suppliers, carriers and any other third party such as a logistic service or 3PL provider involved in the despatch and receipt of goods.

1.4. References

Reference #	Reference Name	Description
[Ref 1]	BRD Exchange Traceability and Processing History Data of Beef Products (Slaughter to Retail) Version 2.50	
[Ref 2]	BRAD Upstream Standards – Despatch, Receipt & Consumption Version 0.1.1	

Reference #	Reference Name	Description
[Ref3]	BRD Despatch Advice Version 1.0.9.3	
[Ref4]	BMS Common Library Release Version 2.1	The documented design of components that are used in multiple messages.
[Ref 5]	BRAD Despatch Advice Country of Processing and Origin Version 4	Details the country of processing and origin requirements.
[Ref 6]	BMS Shared Common Library Release 3.0.0	The documented design of components that are used in both GDSN and eCom.
[Ref 7]	BMS eCom DomainCommon Library Release 3.0.0	The documented design of components that are used in multiple messages in the eCom Domain.
[Ref 8]	BMS Cross_Dock_Despatch_Advice_Extension_r2p5p0_i1p1p1_06_Feb_2009	The documented design of the cross dock extension on Despatch Advice.

1.5. Acknowledgements

1.5.1. Work Group

Function	Name	Company / organisation
Chair eCom BRG	Edison, Carol	General Mills, Inc.
Chair MR3 subteam	Spaan, Stef	GS1 Netherlands
Member	Backert, Veronique	Dilicom
Member	Blankenstein, Kyra	GS1 Netherlands
Member	Bradley, Ardetha	Georgia Pacific
Member	Burke, Miriam	Procter & Gamble Co.
Member	Chatagnier, Isabelle	GS1 France
Member	Childs, Justin	GS1 Global Office
Member	Chresta, Richard	GS1 Switzerland
Member	Cox, Marc	Philips Electronics N.V.
Member	De Flou, Nele	GS1 Belgium & Luxembourg
Member	Denyer, Troy	GS1 Australia
Member	Dicks, Arne	GS1 Germany
Member	Dodd, Marilyn	3M Company

Function	Name	Company / organisation
Member	Duvinger, Karina	GS1 Sweden
Member	Earleywine, Sarah	IDEA (US)
Member	Fedoseev, Sergey	GS1 Russia
Member	Foerderer, Klaus	GS1 Germany
Member	Foxvog, Douglas	DERI, National Univ. of Ireland
Member	Fransen, Wim	EskoArtwork
Member	Gathmann, Stefan	GS1 Ireland
Member	Gilbert, Jean-Christophe	GS1 France
Member	Grangard, Anders	GS1 Global Office
Member	Herrick, Lisa	GS1 Global Office
Member	Hill, Douglas	GS1 Denmark
Member	Hoberg, Peter	Consafe Lodistics
Member	Iwicka, Ewa	GS1 Global Office
Member	Jin Soon, Tan	GS1 Singapore
Member	Joest, Holger	SA2 Worldsync GmbH
Member	Kempkes, Fred	Unilever N.V.
Member	Kidd, Robin	Nestle
Member	Kille, Grant	SA2 Worldsync GmbH
Member	Kozovic, Vladimir	GS1 Serbia
Member	Krid, Anne-Claire	GS1 France
Member	Lai, Keith	GS1 Australia
Member	Laur, Rita	GS1 Canada
Member	Lazarkova, Galya	GS1 Austria
Member	Lenman, Mia	GS1 Sweden
Member	Lockhead, Sean	GS1 Global Office
Member	Maniero, Ana Paula	GS1 Brasil
Member	Maree, Eric	Accenture Supply Chain Services
Member	Martinko, Michal	Hewlett-Packard
Member	McLeod, Ed	Procter & Gamble Co.
Member	Melcher, Jeff	The Exchange (AAFES)
Member	Montes de Oca, Alejandra	GS1 Mexico
Member	Moritz, Marcus	GS1 Germany
Member	Mugnier, Norbert	Dilicom
Member	Narbaits-Jauréguy, Corinne	GS1 France
Member	Noyes, Debra	Johnsonville Sausage, Inc
Member	Picoito, Joao	GS1 Portugal
Member	Plaksin, Leon	GS1 Australia

Function	Name	Company / organisation
Member	Popper, Bret	Kraft Foods
Member	Post, Valerie	Link Snacks Inc, Jack Links Beef Jerky
Member	Pottier, Natascha	GS1 France
Member	Pujol, Xavier	GS1 Spain
Member	Repetto, Mirko	GS1 Italy
Member	Robba, Steven	SA2 Worldsynchron GmbH
Member	Rosell, Pere	GS1 Spain
Member	Rosenberg, Steven	GS1 US
Member	Ryu, John	GS1 Global Office
Member	Schmidt, Tom Eric	August Storck KG
Member	Schneider, Christian	GS1 Switzerland
Member	Sedano Acosta, Federico	GS1 Argentina
Member	Sharma, Vishal	General Mills, Inc.
Member	Sharratt, Jon	Target Corporation
Member	Shimazaki, Ayako	GS1 Japan
Member	SION, Emilie	GS1 France
Member	Smith, Matthew	Bunnings Group Limited
Member	Sobrinho, Gabriel	GS1 Netherlands
Member	Strand, Roman	GS1 Germany
Member	Takahashi, Akira	Data Applications Co, Ltd
Member	Tomassi, Gina	PepsiCo, Inc.
Member	Trelle, Ute	SA2 Worldsynchron GmbH
Member	Voorspuij, Jaco	DHL
Member	Welch, Shan	GS1 UK
Member	Westerkamp, Jan	GS1 Netherlands
Member	Windsperger, Bekki	Best Buy Co., Inc.

1.5.2. Design Team Members

Function	Name	Organisation
Modeller	Eric Kauz / Coen Janssen / Mark van Eeghem	GS1 Global Office
XML Technical Designer	Dipan Anarkat	GS1 Global Office
Peer Reviewer	John Ryu / Eric Kauz	GS1 Global Office

1.5.3. Design Team Members

Function	Name	Organisation
Modeler	Coen Janssen	GS1

Function	Name	Organisation
XML Technical Designer	Dipan Anarkat	GS1
EANCOM Technical Designer	Not Applicable	
Peer Reviewer	Eric Kauz	GS1

2. Business Context

Context Category	Value(s)
Industry	All
Geopolitical	Global
Product	All
Process	Deliver
System Capabilities	GS1 System
Official Constraints	None

3. Additional Technical Requirements Analysis

Not Applicable

3.1. Technical Requirements

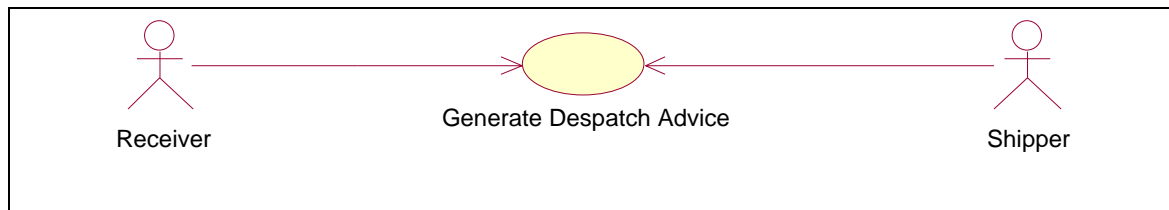
Not Applicable

4. Business Transaction View

4.1. Business Transaction Generate Despatch Advice Use Case Diagram

The Despatch Advice must contain certain information, in line item format, to convey comparative information to the Receiver. The Despatch Advice therefore will provide for the identification of the individual lines within the Despatch Advice by line sequence number. The Despatch Advice may provide for a reference to other related documents, such as the Order, Delivery Note and Consignment. The Despatch Advice may also include a reference to a contract and may include the line sequence numbers from the documents Order, Delivery Note, Consignment and Contract

Figure 4-1 Use Case Generate Despatch Advice

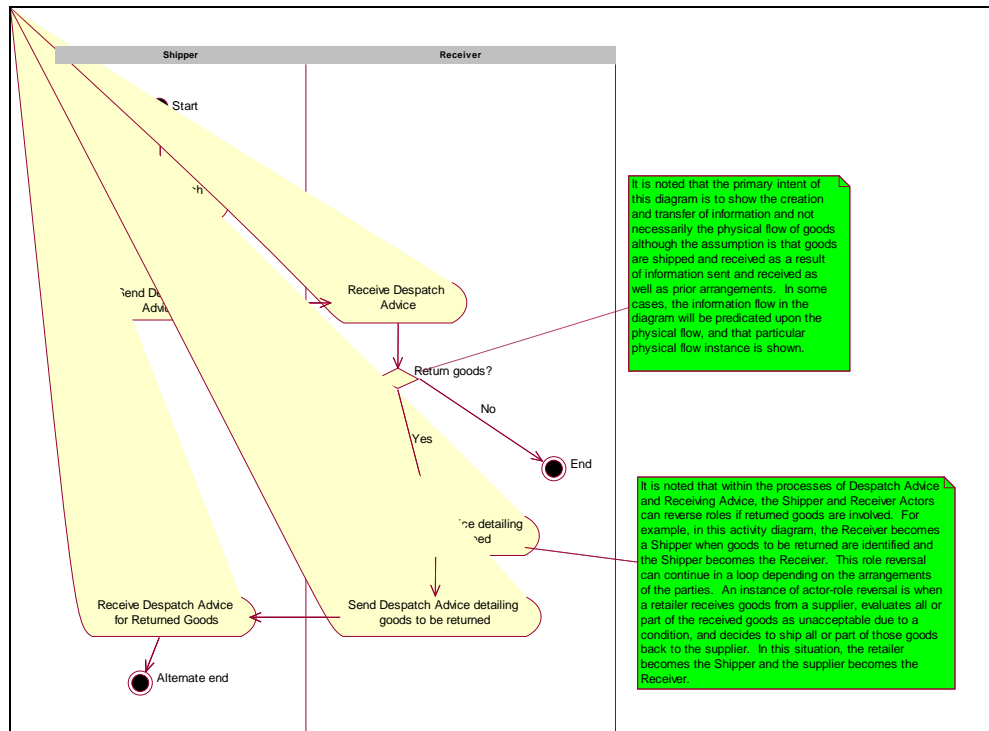


4.1.1. Use Case Description

Use Case ID	GDA									
Use Case Name	Generate Despatch Advice									
Use Case Description	Describes a complete process whereby a Shipper generates a Despatch Advice based on information about the order and the product.									
Actors (Goal)	Receiver and Shipper									
Performance Goals	None									
Preconditions	Master data alignment of locations (GLNs) and products (GTINs).									
Post conditions	Check of the received physical goods with the information of the Despatch Advice and the check of the state of the goods themselves.									
Scenario	<p>Begins when...</p> <p>The Receiver receives a shipment of goods accompanied or preceded by the Despatch Advice or Shipping Documents.</p> <p>Continues with...</p> <table><tr><th>Step #</th><th>Actor</th><th>Activity Step</th></tr><tr><td>1</td><td>Shipper</td><td>Shipper issues the Despatch Advice containing the information of the actual physical shipment.</td></tr><tr><td>2</td><td>Receiver</td><td>Receiver receives Despatch Advice.</td></tr></table> <p>Ends when...</p> <p>If necessary, Receiver creates and sends Despatch Advice to Shipper indicating returned goods. *See role reversal note in activity and sequence diagrams.</p>	Step #	Actor	Activity Step	1	Shipper	Shipper issues the Despatch Advice containing the information of the actual physical shipment.	2	Receiver	Receiver receives Despatch Advice.
Step #	Actor	Activity Step								
1	Shipper	Shipper issues the Despatch Advice containing the information of the actual physical shipment.								
2	Receiver	Receiver receives Despatch Advice.								
Alternative Scenario	Not Applicable									
Related Requirements	Not Applicable									
Related Rules	Not Applicable									

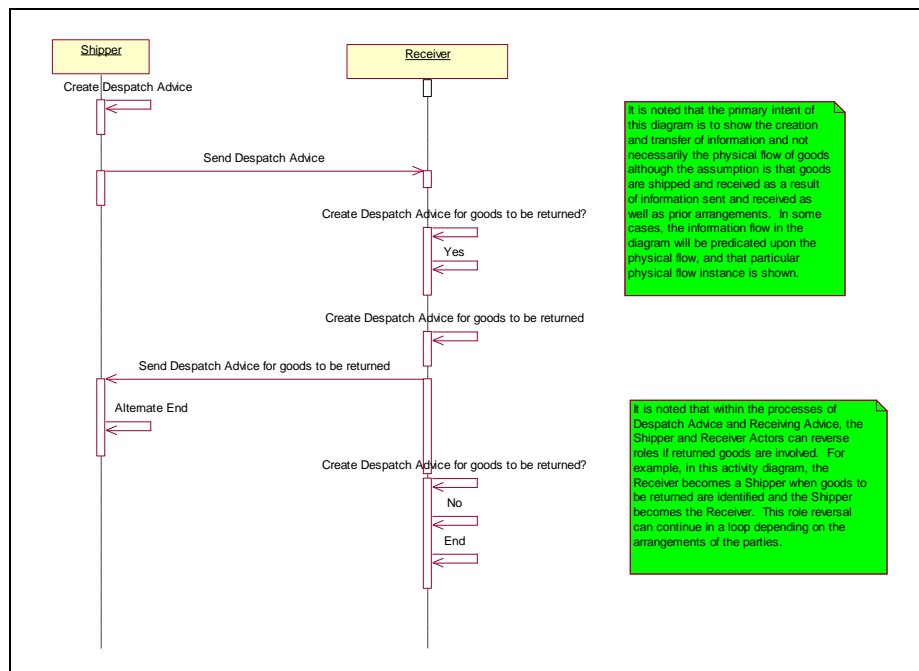
4.1.2. Business Transaction Activity Diagram

Figure 4-2 Activity Diagram Generate Despatch Advice



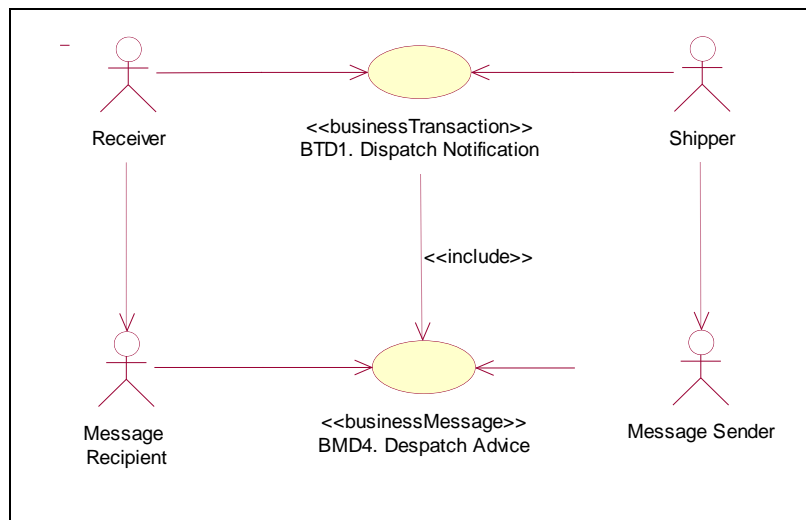
4.1.3. Business Transaction Sequence Diagram

Figure 4-3 Sequence Diagram Generate Despatch Advice



4.2. Business Transaction Dispatch Notification Use Case Diagram

Figure 4-4 Business Transaction Dispatch Notification

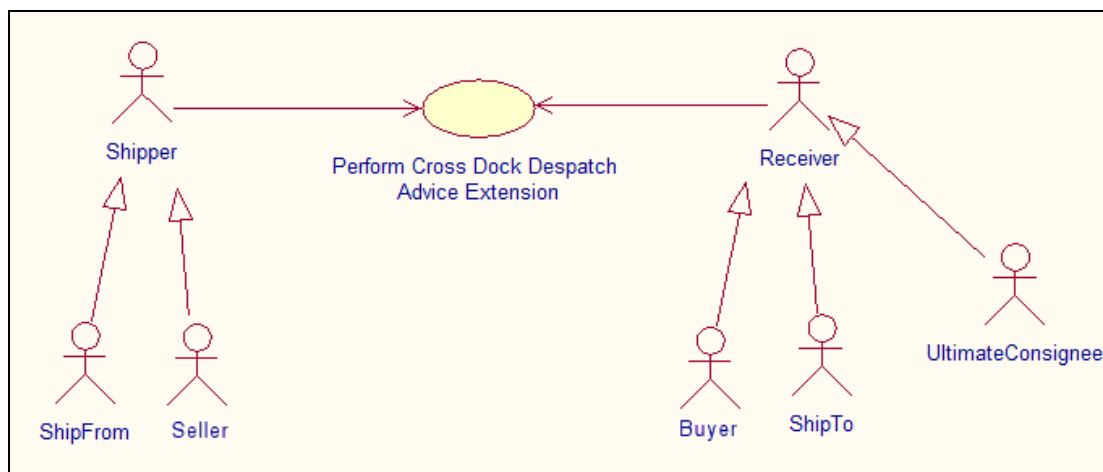


4.2.1. Use Case Description

Use Case ID	BTD1								
Use Case Name	Dispatch Notification								
Use Case Description	<p>The Dispatch Notification enables the supplier / carrier to provide detailed information about the content of a shipment and enables a buyer to reconcile or confirm the physical shipment against the order; it provides a mirror of the shipment that is to be made in terms of package details and in terms of structure of the delivery.</p> <p>The Dispatch Notification is sent by the Ship From party to the Ship To party when the goods are sent - goods being sent being considered as in transit.</p>								
Actors (Goal)	Shipper: To notify the receiver in advance of the contents of a shipment. Receiver: To be informed in advance about the contents of a shipment.								
Performance Goals	The information must be received prior to the arrival of the actual shipment.								
Preconditions	Dispatch Notification to be sent								
Post conditions	Dispatch Notification received								
Scenario	<p>Begins when:</p> <p>After the shipment has been picked, packed, labelled and loaded in order to guarantee that the information sent is correct.</p> <p>Continues with:</p> <table><tr><th>Step #</th><th>Actor</th><th>Activity Step</th></tr><tr><td>1.</td><td>Ship From</td><td>Sends Despatch Advice to the Ship To party.</td></tr></table> <p>Ends when: Ship to receives the despatch advice.</p>			Step #	Actor	Activity Step	1.	Ship From	Sends Despatch Advice to the Ship To party.
Step #	Actor	Activity Step							
1.	Ship From	Sends Despatch Advice to the Ship To party.							
Alternative Scenario	Not Applicable								
Related Requirements	Not Applicable								
Related Rules	Not Applicable								

4.3. Business Transaction Use Case Diagram Cross Dock Despatch Advice Diagram

4.3.1. Business Transaction Activity Diagram



4.3.2. Use Case Description Perform Cross Dock Despatch Advice Process

Use Case ID	UC-1		
Use Case Name	Perform Cross Dock Despatch Advice Process		
Use Case Description	Cross Dock Despatch Advice Extension		
Actors (Goal)	Buyer: Party to which merchandise is sold. (i.e. retailer, wholesaler, store). Seller: Party selling merchandise to a buyer. (i.e. supplier, LSP). Shipper: Party from where goods will be or have been shipped. (i.e. supplier, LSP, retailer). Receiver: Party to where goods will be or have been shipped. (i.e. LSP, retailer, store). Ultimate Consignee: Party which is the final destination of where the goods will be or have been shipped to.		
Performance Goals	To perform and execute the despatch Advice within the specific context of Cross docking.		
Preconditions			
Post conditions			
Scenario	Begins when: the Ship From Party closed the doors of the delivery vehicle		
	Step	Actor	Activity Step
	1	ShipFrom /Shipper	Sends Despatch Advice to the ShipToParty on the CrossDock Station
	2	ShipTo/Receiver	Receives Despatch Advice from the Ship From part and checks the delivered goods through scanning the SSCCs
	3	ShipFrom/Shipper	Picks the goods per final destinations and sends a Despatch Advice to the ShipTo party of the final destination (Ultimate consignee)

	4	ShipTo/Receiver	Receives the Despatch Advice from the ShipFrom party and checks the delivered goods.
	5		
Ends when... the ShipTo Party/Receiver on the final destination accepts the delivered goods.			
Alternative Scenario	<i>(any alternatives to the above scenario)</i>		
Related Requirements			
	1		
Related Rules	1	The party which makes the DESADV must make and send the Despatch Advice to the Ship To Party/Receiver after the moment that the doors of the delivery vehicle are closed.	
	2	<p>By a cross dock delivery a Ship From Party/Shipper can send a Despatch Advice per final destination (Ultimate Consignee) or one Despatch Advice with the information for all the final destinations.</p> <p>For example: Delivery of a consignment (more shipments) to a Cross Dock Station. The consignment contains a shipment with 2 pallets for destination A and a shipment with 3 pallets for destination B. The Ship From Party can send 2 separate despatch advice (one for destination A and one for destination B) or only one despatch advice with the information for destination A and destination B).</p>	
	3	If all the information for all the final destinations are sent in the same despatch advice, the message will be structured by final location.	

4.3.3. Business Transaction Activity Diagram

Not Applicable

4.3.4. Business Transaction Sequence Diagram

Not Applicable

5. Information Model (Including GDD Report)

5.1. GDD Reports

5.1.1. GDD Report: Despatch Advice

Content	Attribute / Role	Datatype /Secondary class	Multiplicity	Definition	Requirements
DespatchAdvice				The Despatch Advice enables a shipper to provide information about the content of a shipment to a receiver. Usually the Despatch Advice serves as a pre-announcement of the goods being shipped. In a pick-up scenario it may also serve as a pre-announcement of goods to be collected.	
Association	ultimateConsignee	TransactionalParty	0..1	Identifies the party that is the final destination for the shipment.	
Association	purchaseConditions	DocumentReference	0..1	Reference to the business document that describes the commercial conditions under which the goods are delivered.	
Association	receiver	TransactionalParty	1..1	A party who engages in receiving goods. In a commercial scenario this would be the customer.	
Association	purchaseOrder	DocumentReference	0..1	Reference to the business document that triggered the delivery of the goods.	
Association	deliveryNote	DocumentReference	0..1	The delivery note accompanying the shipment.	
Association	shipFrom	TransactionalParty	0..1	Identification of the location from where goods will be or have been shipped.	

Content	Attribute / Role	Datatype /Secondary class	Multiplicity	Definition	Requirements
Association	specification	DocumentReference	0..1	An essential technical requirement for items, materials or services, including the procedures to be used to determine whether the requirement has been met. Specifications may also include requirements for preservation, packaging, packing, and marking.	
Association	contract	DocumentReference	0..1	The specific contract referenced by the Despatch Advice.	
Association		DespatchAdviceTotals	0..1	Aggregated shipment information (across logistic units) such as the total weight.	
Association		DespatchAdviceTransportInformation	0..1	Information with regards to the transportation and delivery of the shipment.	
Generalization		Document		Used to specify basic information about the content of the message including version number, creation date and time.	
Association	pickUpLocation	TransactionalParty	0..1	Party where goods are collected or taken over by the carrier (i.e. if other than consignor).	
Association		DespatchInformation	1..1	Information with regards to the despatching or shipping of goods.	
Association	declarantsCustomsIdentity	DocumentReference	0..1	Reference to the party whose posted bond or security is being declared in order to accept responsibility for a goods declaration and the applicable duties and taxes.	
Association	shipTo	TransactionalParty	1..1	Identification of the location to where goods will be or have been shipped.	

Content	Attribute / Role	Datatype /Secondary class	Multiplicity	Definition	Requirements
Association	productCertification	DocumentReference	0..1	Number assigned by a governing body (or their agents) to a product which certifies compliance with a standard.	
Association	inventoryLocation	TransactionalParty	0..1	Identification of the location where the goods will be stored.	
Association		DespatchAdviceLogisticUnit	0..*	Information on the logistic units contained in the shipment.	
Association	shipper	TransactionalParty	1..1	A party who engages in shipping goods. In a commercial scenario this would be the supplier.	
Association	despatchAdviceIdentification	EntityIdentification	1..1	Unique identifier for the Despatch Advice Message.	
Association	carrier	TransactionalParty	0..1	Uniquely identifies the entity that transports the shipment.	
Attribute	deliveryTypeCode	DeliveryTypeCode	0..1	Code specifying the type of completeness of delivery compared to the orderinstruction.	BRAD RQ09-233
Attribute	note	Description500	0..1	Free text used to convey information that is not processed by applications. Only meant to present the information to a user as on a screen, in a browser, etc.	BRAD RQ 09.236.F

5.1.2. GDD Report: Despatch Advice Item Total

Content	Attribute / Role	Datatype /Secondary class	Multiplicity	Definition	Requirements
DespatchAdviceItemTotal				Aggregated shipment information (across logistic units) specified per trade item, such as the total weight of a trade item.	MR3 renamed form ConsignedItemWeight
Association		UnitMeasurement	1..*	The measurement information associated to the despatch advice item total.	
Association		TradeItemIdentification	1..1	The trade item associated to the despatch advice item total.	
DespatchAdviceTotals				Aggregated shipment information (across logistic units) such as the total weight.	MR3 renamed from ConsignmentInformation
Association		PackageTotal	0..*	The total quantity of logistic units and items specified per package type.	
Association		DespatchAdviceItemTotal	0..*	Aggregated shipment information (across logistic units) specified per trade item, such as the total weight of a trade item.	
Association		UnitMeasurement	0..*	The measurement information associated to the despatch advice total.	

5.1.3. GDD Report: Despatch Advice Transport Information

Content	Attribute / Role	Datatype /Secondary class	Multiplicity	Definition	Requirements
DespatchAdviceTransportInformation				Information with regards to the transportation and delivery of the shipment.	
Association		ConsignmentIdentification	0..1	The identification of a consignment related to the shipment specified in the despatch advice.	
Association		DeliveryTerms	0..1	The delivery terms for the shipment.	
Association		ShipmentIdentification	0..1	The identification of the shipment specified in the despatch advice.	
Association	billOfLadingNumber	DocumentReference	0..1	Bill of lading: A document which evidences a contract of carriage and the taking over or loading of goods by the carrier, and by which the carrier undertakes to deliver the goods against surrender of the document.	
Attribute	transportMeansID	Identifier	0..1	Vehicle license plate/Aircraft number identifying a means of transport.	MR3 renamed from license Plate
Attribute	transportModeCode	TransportModeCode	0..1	Code specifying the mode of transport.	

5.1.4. GDD Report: Despatch Advice Line Item

Content	Attribute / Role	Datatype /Secondary class	Multi plicit y	Definition	Requireme nts
DespatchAdviceLineItem				Information specifying the contents, characteristics, history and physical characteristics of delivered goods.	
Association	requestedItemIdentification	TradeItemIdentification	0..1	The trade item identification of the goods that were ordered or planned to be delivered.	
Association	deliveryNote	DocumentReference	0..1	Reference to the physical document that accompanies the delivered goods.	
Association	referencedConsignment	ConsignmentIdentification	0..1	Reference to the identification of the consignment.	
Association	purchaseConditions	DocumentReference	0..1	Reference to the business document that describes the commercial conditions under which the goods are delivered.	
Association	specification	DocumentReference	0..1	An essential technical requirement for items, materials or services, including the procedures to be used to determine whether the requirement has been met. Specifications may also include requirements for preservation, packaging, packing, and marking.	
Association	contract	DocumentReference	0..1	Reference to the contractual agreement under which the goods are delivered.	

Content	Attribute / Role	Datatype /Secondary class	Multi plicit y	Definition	Requireme nts
Association	purchaseOrder	DocumentReference	0..1	Reference to the business document that triggered the delivery of the goods.	
Association		DangerousGoodsInformation	0..1	Hazardous instructions applicable to delivered goods, such as where or how specified packages or containers are to be handled because of restriction from dangerous goods.	
Association	customerReference	DocumentReference	0..1	Reference to the end customer that will receive the goods.	MR3 renamed from customer
Association		TransactionalTradeItem	1..1	The trade item identification of the goods that were delivered.	
Association		DespatchAdviceQuantityVariance	0..*	Information with regards to any difference between what was ordered and what is ready for or has been despatched.	
Association	locationOfLastProcessing	LocationInformation	0..1	The name and address of the last processing location in which the trade item was processed or transformed.	
Association	locationOfOrigin	LocationInformation	0..1	The name and address of location of origin in which the goods have been produced or manufactured, according to criteria laid down for the purposes of application of the Customs tariff, of quantitative restrictions, or of any other measure related to trade.	

Content	Attribute / Role	Datatype /Secondary class	Multi plicit y	Definition	Requireme nts
Association	productCertification	DocumentReference	0..1	Reference to a number assigned by a governing body (or their agents) to a product which certifies compliance with a standard.	
Association	promotionalDeal	DocumentReference	0..1	Reference to a number assigned by a vendor to a special promotion activity.	
Attribute	lineItemNumber	positiveInteger	1..1	Provides the line number associated to the Despatch Advice Line Item.	
Attribute	despatchedQuantity	Quantity	1..1	The number of units shipped of the order unit or associated item. The unit of measure for the quantity is assumed to be the same as for the associated item. Thus the quantity must be specified in the same unit of measure as the item, e.g. case, each, etc...	MR3 renamed from quantityContained
Attribute	countryOfLastProcessing	CountryCode	0..1	Code identifying the country in which the trade item was processed, transformed, or inspected last before its import.	
Attribute	countryOfOrigin	CountryCode	0..1	Code identifying the country in which the goods have been produced or manufactured, according to criteria laid down for the purposes of application of the customs tariff, of quantitative restrictions, or of any other measure related to trade.	

Content	Attribute / Role	Datatype /Secondary class	Multi plicit y	Definition	Requireme nts
Attribute	extension	extension	0..1	Extension point for inclusion of context specific information, such as information specific to a particular type of product. Example: Extension for meat products.	
Attribute	freeGoodsQuantity	Quantity	0..1	The quantity of despatched goods which is free of charge.	
Attribute	handlingInstructionCode	HandlingInstructionCode	0..*	Code specifying an instruction applicable to the transport or storage of goods.	
Attribute	note	Description500	0..1	Free text used to convey information that is not processed by applications. Only meant to present the information to a user as on a screen, in a browser, etc.	BRAD RQ 09.236.F
Attribute	requestedQuantity	Quantity	0..1	The quantity that was ordered or planned to be delivered.	
DespatchAdviceQuantityVariance				Information with regards to any difference between what was ordered and what is ready for or has been despatched.	
Attribute	varianceReasonCode	VarianceReasonCode	1..1	Code specifying the reason for the change in the despatched quantity.	renamed from changeReason
Attribute	varianceQuantity	Quantity	1..1	The quantitative difference between what was ordered and what is despatched.	
Attribute	deliveryDateVariance	date	0..1	The estimated delivery date for the goods that have been put on	

Content	Attribute / Role	Datatype /Secondary class	Multiplicity	Definition	Requirements
				backorder.	
Attribute	remainingQuantityStatusC ode	RemainingQuantityStatusCode	0..1	Code specifying the action that will be taken with respect to the goods that were not despatched.	BRAD RQ09-233

5.1.5. GDD Report: Despatch Advice Logistic Unit

Content	Attribute / Role	Datatype /Secondary class	Multiplicity	Definition	Requirements
DespatchAdviceLogisticUnit				Information on a logistic unit contained in the shipment.	
Generalization		LogisticUnits			
Association	ultimateConsignee	TransactionalParty	0..1	Identifies the party that is the final destination for the logistic unit.	MR3 integration of crossdock extension
Association		DespatchAdviceLineItem	0..*	Information on the trade items contained in the shipment.	
Attribute	estimatedDeliveryDateTimeAtUltimateConsignee	dateTime	0..1	The date and time the logistic unit is expected to be delivered at the ultimate consignee.	MR3 integration of crossdock extension

5.2. Class Diagrams

Figure 5-1 Despatch Advice Class Diagram

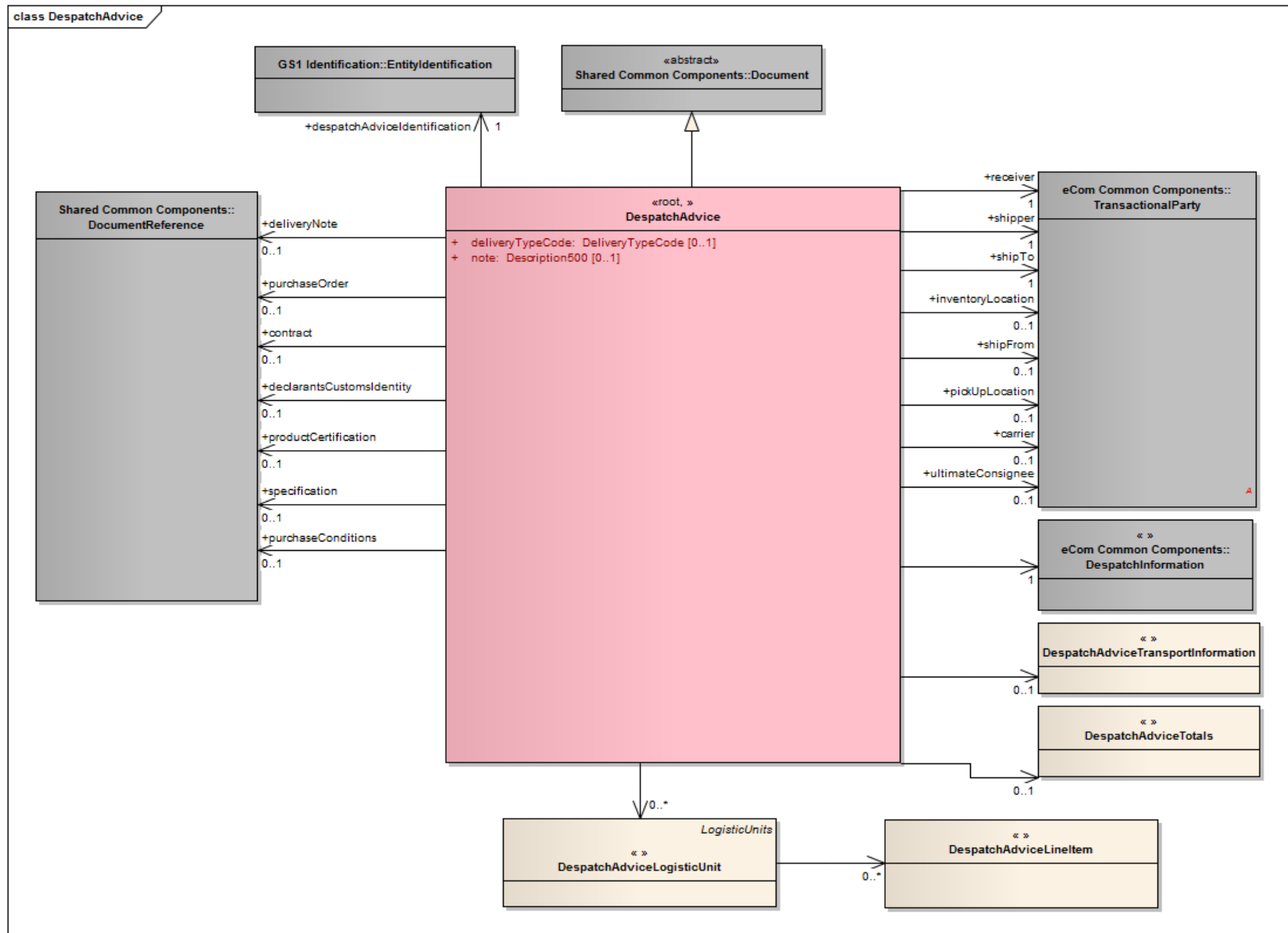


Figure 5-2 Despatch Advice Line Item Class Diagram

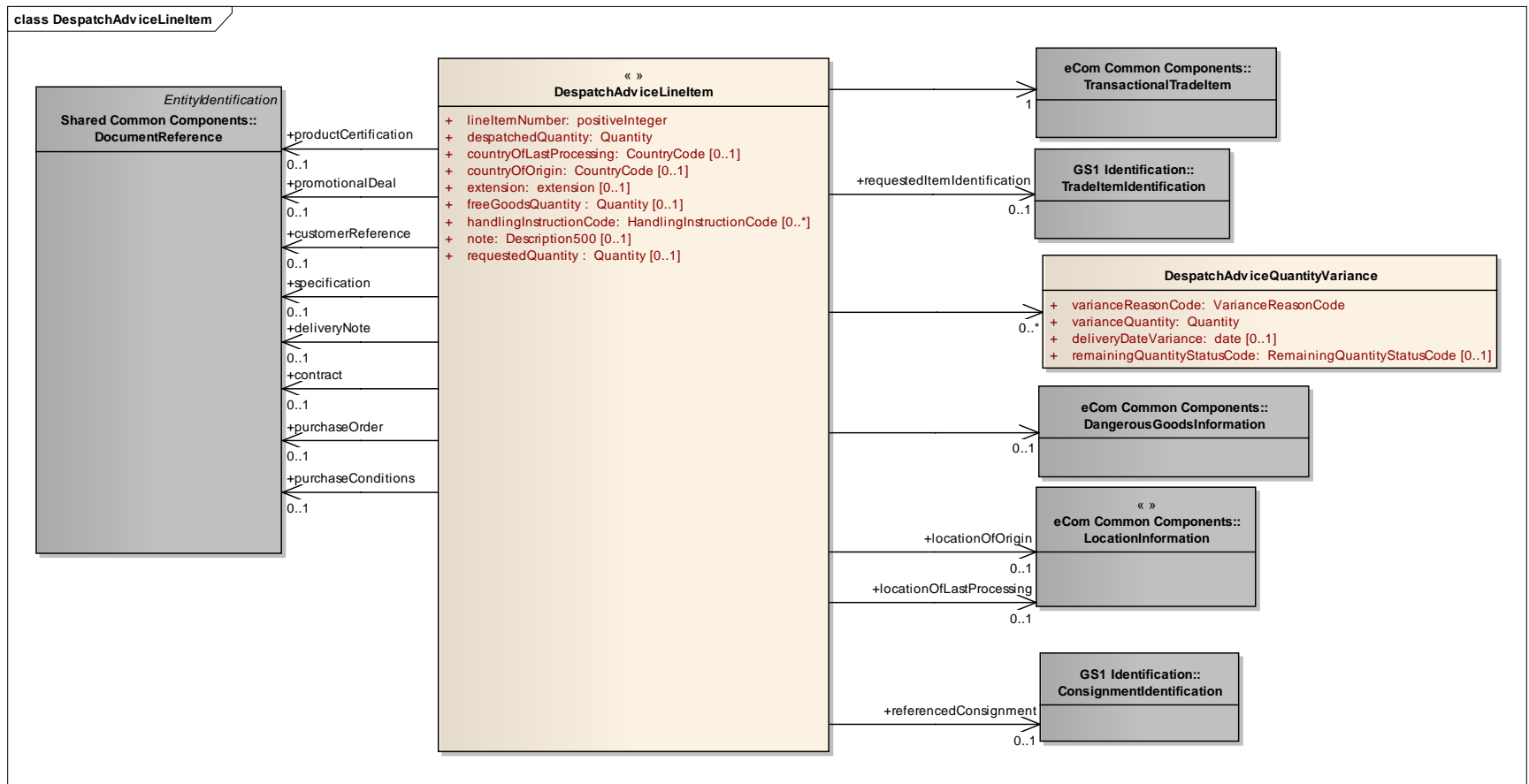


Figure 5-3 Despatch Advice Totals Class Diagram

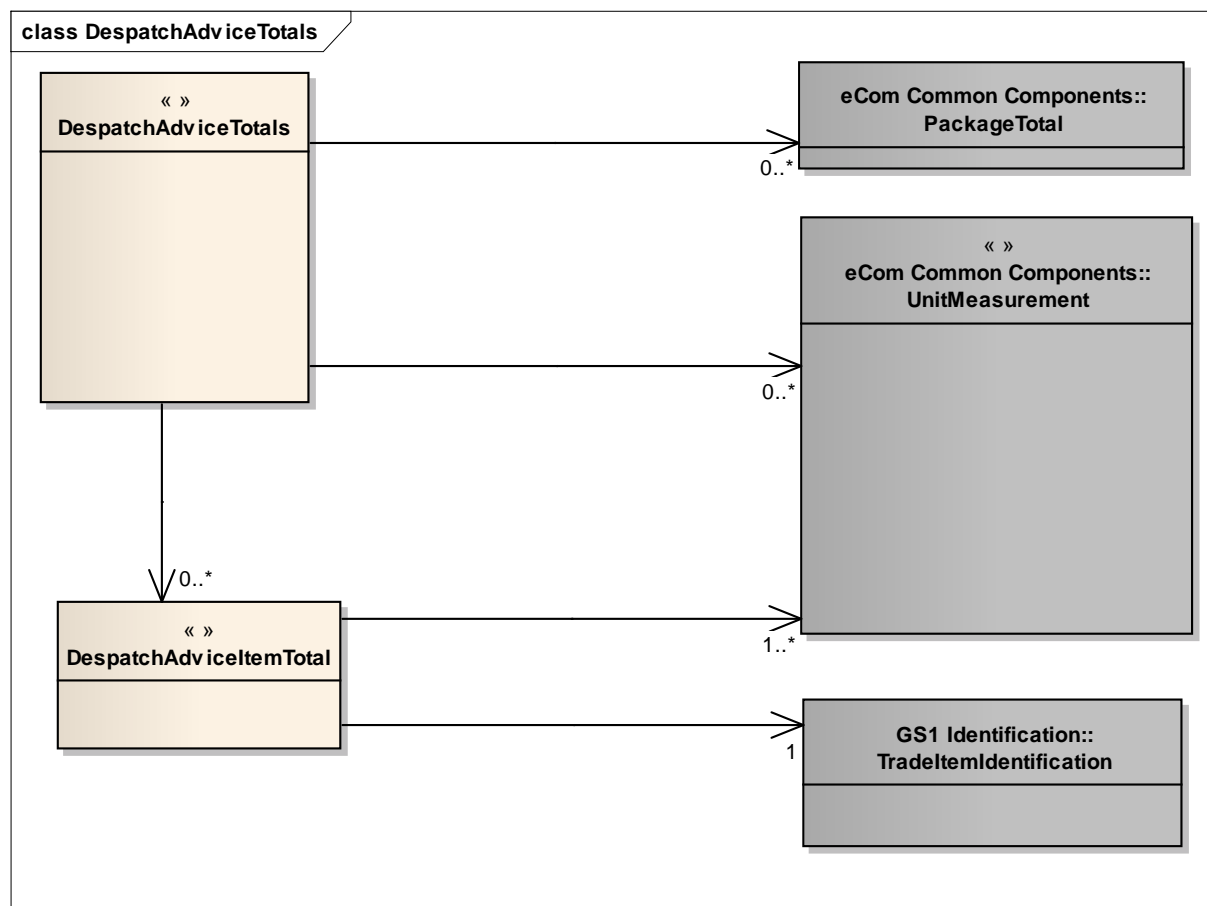


Figure 5-4 Despatch Advice Transport Information Diagram

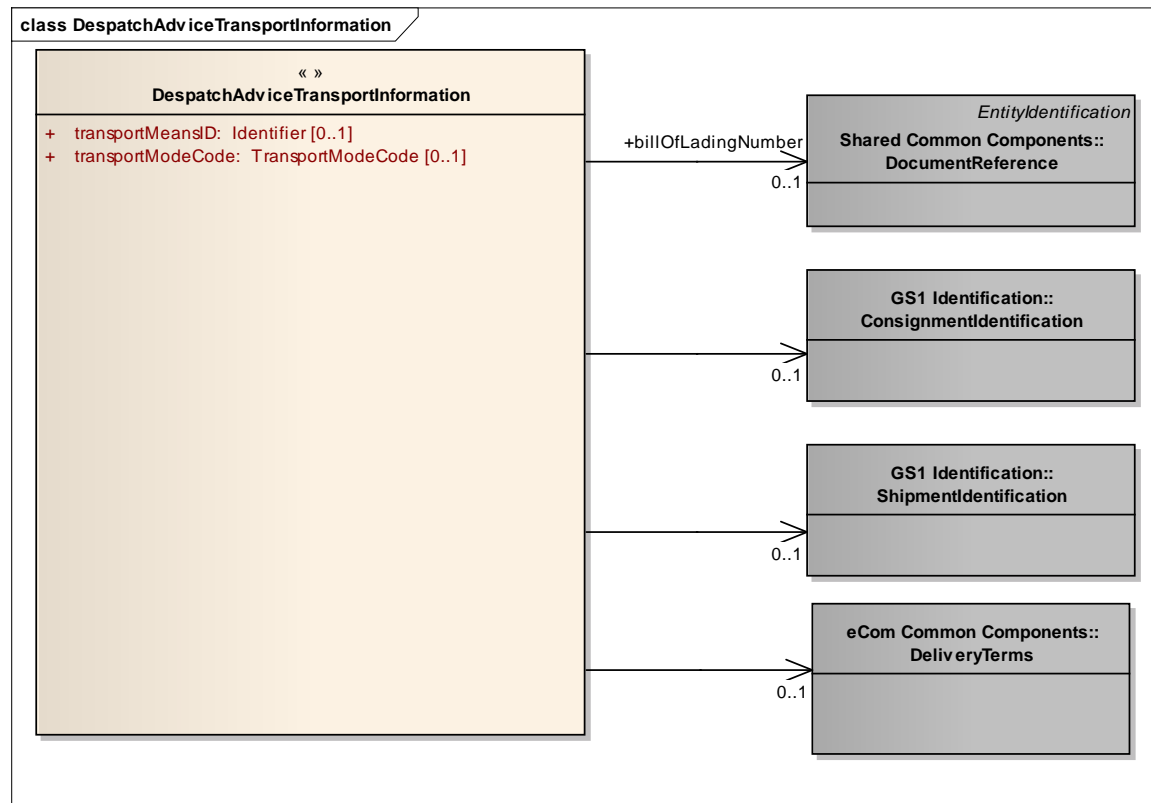
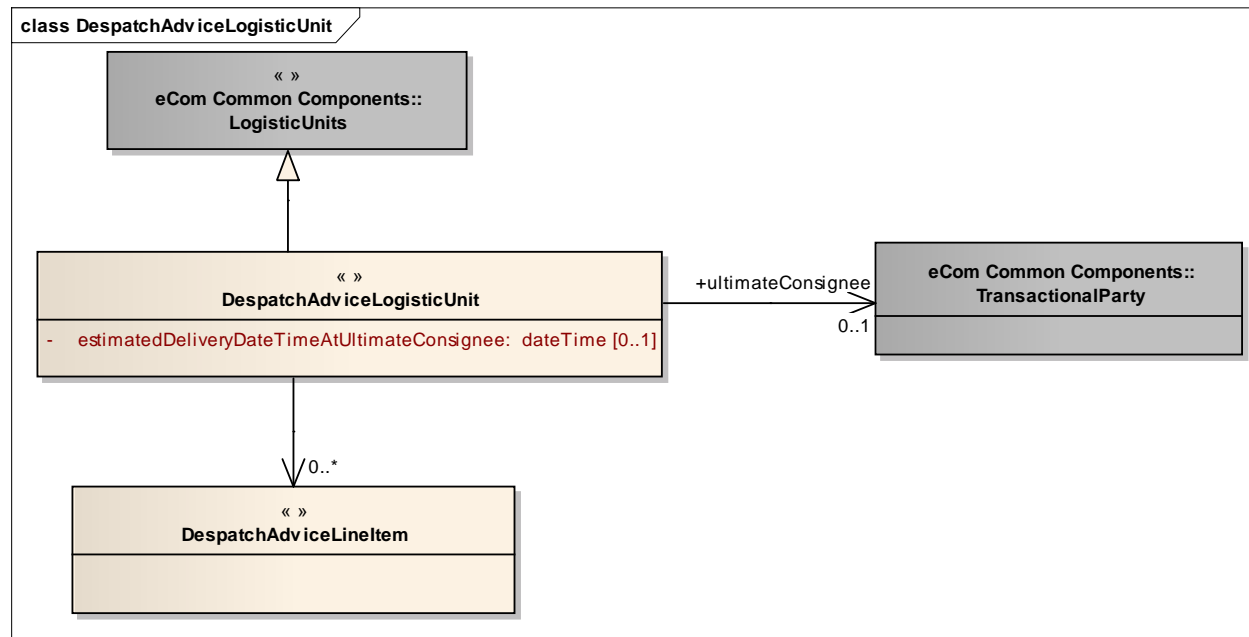


Figure 5-5 Despatch Advice Logistic Unit Diagram



Note: Reference Shared Common Library Business Message Release 3.0.0 and eCom Domain Common Library Business Message Release 3.0.0 for all common information.

5.3. Code Lists



Note: Reference Shared Common Library Business Message Release 3.0.0 and eCom Domain Common Library Business Message Release 3.0.0 for all Code Lists

Class	Codelist	Referenced in
DespatchAdvice	DeliveryTypeCode	eCom domain Common Library Business Message (BMS) Release 3.0.0
DespatchAdviceTransportInformation	TransportmodeCode	eCom domain Common Library Business Message (BMS) Release 3.0.0
DespatchAdviceLineItem	CountryCode	Shared Common Library Business Message (BMS) Release 3.0.0
DespatchAdviceLineItem	HandlingInstructionCode	eCom domain Common Library Business Message (BMS) Release 3.0.0
DespatchAdviceQuantityVariance	VarianceReasonCode	eCom domain Common Library Business Message (BMS) Release 3.0.0
DespatchAdviceQuantityVariance	RemainingQuantityStatusCode	eCom domain Common Library Business Message (BMS) Release 3.0.0

6. Business Document Example

6.1. Despatch Advice Business Example

The following is an example of a despatch advice message. The message is sent out on July 31, 2010 11 AM. The message is identified with the unique identifier KC.

Parties

- Material Supplier (Shipper and Content Owner 8812345678903)
- Manufacturer (Receiver 8712345678913)
- Manufacturer Ship To (8712345678921)

Referenced Purchase Order

Purchase Order 933, from Manufacturer (8712345678913) Date 2010-04-12, Line Item 25

Despatch Information

Actual Ship Date Time: July 4, 2010 300 PM

Despatch Advice Logistic Line Item

Package Type: PE (Pallet, Modular)

Logistics Unit Identification SSCC 881234567000010112

Despatch Advice Item Containment Line Item

Country of Origin: Costa Rica

Item GTIN: 08712345678906

Quantity: 700

Delivery Note References

Referenced Date Time: April 24, 2010 T 900 AM

Referenced Identification: DN

Line Item Number: 1

6.2. Despatch Advice Cross Dock Business Example

The following is an example of a despatch advice message with the crossdock extension. The message is sent out on February 9th at 11 AM. The message is identified with the unique identifier 200540001. The content owner is the sending party, in this case the material supplier (Shipper 8812345678903).

The ultimate consignee is 8812347678903

The despatch advice is sent by the material supplier (Shipper 8812345678903) to the manufacturer (Receiver 8712345678913).

7. Implementation Considerations

The Despatch Advice should also include the line sequence numbers from the documents (Purchase Order and Purchase Conditions) that can be referenced to. These line sequence numbers for referenced documents are optional.

The idea behind this is that if a despatch advice refers to one order or contract or despatch note or consignment note the reference is identified at the header level and that then applies to all item lines.

If a despatch advice is referring to more than one order or contract or despatch note or consignment note then the reference is identified at the detail level through the DetailLevelReference.

Table below illustrates references.

Despatch Advice Line Number	Reference Identification and Date	Referenced Line Number
1	Purchase Order 933, Date 2007-04-12	25
2	Purchase Order 934, Date 2007-05-12	9
3	Purchase Order 990, Date 2007-06-12	1

8. Testing

8.1. Pass / Fail Criteria

Not Applicable

8.2. Test Data

8.2.1. Despatch Advice Test Data

DespatchAdvice	
Document	
creationDateTime	2010-07-31T11:00:00

DespatchAdvice	
documentStatus	ORIGINAL
EntityIdentification (+despatchAdviceIdentification)	
entityIdentification	KC
PartyIdentification (+contentOwner)	
gln	8812345678903
TransactionalParty (+shipper)	
gln	8812345678903
TransactionalParty (+receiver)	
gLN	8712345678913
TransactionalParty (+shipTo)	
gln	8712345678921
DocumentReference (+purchaseOrder)	
lineNumber	25
creationDateTime	2010-07-31T00:00:00
EntityIdentification	
entityIdentification	933
TransactionalParty (+contentOwner)	
gln	8712345678913
DespatchInformation	
actualShipDateTime	2010-07-04T15:00:00
DespatchAdviceLogisticUnit	
LogisticUnits	
packageType	PE (pallet, modular)
LogisticUnitIdentification	
sscc	881234567000010112
DespatchAdviceLineItem	
lineItemNumber	1
despatchedQuantity	700
countryOfOrigin	CR
TransactionalTradeItemIdentification (+requestedItemIdentification)	
gtin	08712345678906
DocumentReference (+deliveryNote)	
lineItemNumber	001
referenceDateTime	2007-04-24T09:00:00
referenceIdentification	DN

8.2.2. Despatch Advice Cross Dock Test Data

DespatchAdvice	
Document	
creationDateTime	2010-02-09T11:00:00
documentStatus	ORIGINAL
EntityIdentification (+despatchAdviceIdentification)	
entityIdentification	200540001
PartyIdentification (+contentOwner)	
gln	8812345678903
TransactionalParty (+shipper)	
gln	8812345678903
TransactionalParty (+receiver)	
gLN	8712345678913
TransactionalParty (+shipTo)	
gln	8712345678921
TransactionalParty (+inventoryLocation)	
gln	8712345678922
DocumentReference (+purchaseConditions)	
EntityIdentification	
entityIdentification	2004000012
PartyIdentification (+contentOwner)	
gln	8812345678903
DespatchAdviceTransportInformation	
DocumentReference (+billOfLadingNumber)	
creationDateTime	2010-02-09T10:00:00
entityIdentification	88021
DespatchInformation	
actualShipDateTime	2010-02-09T11:10:00
DespatchAdviceLogisticUnit	
LogisticUnits	
packageType	PE (pallet, modular)
LogisticUnitIdentification	
sscc	881234567000010112
DespatchAdviceLineItem	
lineItemNumber	1
despatchedQuantity	700
TradeItemIdentification (+requestedItemIdentification)	

DespatchAdvice	
gtin	08712345678906
DocumentReference (+deliveryNote)	
lineItemNumber	001
creationDateTime	2010-02-09T11:00:00
EntityIdentification	
referenceIdentification	2400021
TransactionalTradeItem	
TransactionalItemData	
lotNumber	ASD00012
bestBeforeDate	2010-08-01
ConsignmentIdentification(+referencedConsignment)	
ginc	GS12006156969
TransactionalParty (+ultimateConsignee)	
gln	8812347678903

9. Appendices

Not Applicable

10. Adherence to Architectural Principles

#	AG Principle	Brad Adherence Statement	Does BRAD Adhere?	Comment
2.1	The GS1 Architecture shall be fully aligned to GS1 Strategy, Vision, & Mission	The requirements in the BRAD are aligned with the business problem as defined in the CR and BCD.	<input checked="" type="checkbox"/>	
2.2	The GS1 Architecture shall leverage the use of GS1 Keys	The requirements in the BRAD maintain the GS1 keys as the primary, mandatory identifiers.	<input checked="" type="checkbox"/>	
2.3	The GS1 Architecture shall leverage the common GS1 Global Data Dictionary (GDD)	The requirements in the BRAD do not alter the formats of primary identifiers and comply with data elements as defined in the Global Data Dictionary.	<input checked="" type="checkbox"/>	
2.4	The GS1 Architecture shall be forward-looking, provide for migration strategies and backward compatibility, and support adaptable and flexible solutions	The requirements stated in the BRAD are backwards compatible according to the stated scope in the document. The document scope explicitly states whether requirements included in document are backwards compatible. The business requirements take into consideration the potential impact of the standard, especially with respect to implementation and maintenance. Any potential known impact is documented in the BRAD.	<input checked="" type="checkbox"/>	
2.5	The GS1 Architecture shall support business processes tied to trading partner needs, relevant, and committed to demonstrable business value	All business requirements contained in the BRAD come from trading partners or representatives with a genuine intention to implement the standards when developed. All requirements are driven by the business needs of the trading partners.	<input checked="" type="checkbox"/>	
2.6	The GS1 Architecture shall enable security where appropriate	Security enabled requirements are defined in the BRAD when appropriate.	<input checked="" type="checkbox"/>	
2.7	The GS1 Architecture shall be consistent	The business requirements contained in the BRAD do not violate consistency of the data architecture within each layer and between each layer of the GS1 System. For example, requirements do not alter a key used across GS1 standards or alter a reusable object without applying this change across related standards.	<input checked="" type="checkbox"/>	
2.8	The GS1 Architecture shall be royalty-free	This BRAD supports this principal where possible. This requirement could include the use of other standards organizations that may not be royalty free	<input checked="" type="checkbox"/>	

#	AG Principle	Brad Adherence Statement	Does BRAD Adhere?	Comment
3.1	The GS1 Architecture should promote the achievement of the best overall value at the lowest total cost of ownership	Not applicable to a BRAD. This would be application in the solutions phase.	<input checked="" type="checkbox"/>	
3.2	The GS1 Architecture should promote scalability	The business requirements take into consideration the potential scalability of the standard. Any potential known impact to scalability is documented in the BRAD.	<input checked="" type="checkbox"/>	
3.3	The GS1 Architecture should promote seamless integration	The BRAD promotes seamless integration with other GS1 Standards.	<input checked="" type="checkbox"/>	
3.4	The GS1 Architecture should promote interoperability and compliance	The business requirements take into consideration data and process interoperability. For example, any shared objects between interoperable messages must remain consistent. Any potential known impact to interoperability is documented in the BRAD.	<input checked="" type="checkbox"/>	
3.5	The GS1 Architecture should promote simplicity and standard interfaces	The business requirements in the BRAD do not threaten the standardisation of the interfaces of the GS1 System. Interfaces are not limited to references to technology but also include such ideas as business interfaces and process interfaces.	<input checked="" type="checkbox"/>	
3.6	The GS1 Architecture should avoid duplication	The business requirements in the BRAD do not create duplications with existing GS1 components. If there are potential duplications, these are documented within the BRAD with a stated rationale for the duplication.	<input checked="" type="checkbox"/>	
3.7	The GS1 Architecture should promote technology independence and a layered approach	The business requirements in the BRAD do not impose implicit or explicit restrictions of any technology.	<input checked="" type="checkbox"/>	
3.8	The GS1 Architecture should promote global cross-sector definitions and leverage the best of global and the best of local	The business requirements in the BRAD take into account a global perspective. All local (Industry or Geopolitical) requirements have a suitable rationale to explain why they cannot be handled globally. For example, a Boolean indicator of a specific regulation as opposed to a generic code list covering multiple regulations.	<input checked="" type="checkbox"/>	
3.9	The GS1 Architecture shall leverage a common strategy for extensibility	This BRAD used consistent and common, extensibility approaches, methodologies and technology where available.	<input checked="" type="checkbox"/>	

#	AG Principle	Brad Adherence Statement	Does BRAD Adhere?	Comment
4.1	In support of a common GS1 Architecture, GS1 shall leverage work of other standards bodies wherever possible.	This BRAD utilizes works of other standards bodies wherever possible.	<input checked="" type="checkbox"/>	
4.2	In support of a common GS1 Architecture, GS1 shall strive to eliminate exceptions and variances wherever possible	Not applicable to a BRAD. This would be applicable in the implementation phase.	<input checked="" type="checkbox"/>	

11. Summary of Changes

Change	BSD Version	Associated CR Number
For BMS Release 3.0.0: Incorporated Cross Dock Extension into the message itself. Added elements corresponding to the Current requirements queue Updated the GDD Reports and Class diagrams Updated the Business Example and test data sections Added the architectural principles section. Updated the introduction and use cases.	Issue 5.0.0	09-000233 09-000235 09-000236 09-000238 09-000240 10-000068
Updates for TSD Development: Removed 2 nd DespatchInformation in example as it can only occur once according to the model. Removed redundant information of prior to MR3 from Summary of Changes and Document Change History	Issue 5.0.0	n/a
Updates for BMS Public Review: - removed association from DespatchAdvice to DespatchAdviceLineItem, in order to have only one path to the line item (via DespatchAdviceLogisticUnit). - added attribute deliveryTypeCode to the root class.	Issue 5.0.0	n/a
Updates for BMS Publication (3.0.0) <ul style="list-style-type: none"> Updated date of document Clean-up of Document Change History Removed year form copyright statement in footer Corrected spelling of Section 11 Architectural Principles Corrected example (entityIdentification) Corrected case of GS1 keys in example Removed orphan sentence fragment "The reported despatch consists of" in section 6.2 example 	Issue 5.0.0	n/a