



Warehousing Operations Instruction and Notification

Business Message Standard (BMS)

Release 3.2

01-Dec-2014, Issue 1





Document Summary

Document Item	Current Value
Document Title	Business Message Standard (BMS) - Warehousing Operations Instruction and Notification
BMS Release	3.2
Document Version	Issue 1, 01-Dec-2014
Work Group Name	eCom SMG
BMS Template Version	2.4

Work Request Reference

Date of WR Submission to GSMP:	WR Submitter(s):	Refer to Work Request (WR) Number(s):
25-Jun-2014	GS1 Global Office	14-000110

Business Requirements Document (BRAD) Reference

BRAD Title	BRAD Issue Date	BRAD Version
Warehousing Inventory Management	September 2012	1.0

Document Change History

Date of Change	Version	Changed By	Reason for Change	Summary of Change
12-Jan-2012	BMS 3.0 – Issue 1	Mark Van Eeghem	BMS Release 3.0	See summary of changes
01-May-2013	BMS 3.1 – Issue 1	Coen Janssen	BMS Release 3.1	See summary of changes
01-Dec-2014	BMS 3.2 – Issue 1	Ewa Iwicka	BMS Release 3.2	See summary of changes

Disclaimer

WHILST EVERY EFFORT HAS BEEN MADE TO ENSURE THAT THE GUIDELINES TO USE THE GS1 STANDARDS CONTAINED IN THE DOCUMENT ARE CORRECT, GS1 AND ANY OTHER PARTY INVOLVED IN THE CREATION OF THE DOCUMENT HEREBY STATE THAT THE DOCUMENT IS PROVIDED WITHOUT WARRANTY, EITHER EXPRESSED OR IMPLIED, REGARDING ANY MATTER, INCLUDING BUT NOT LIMITED TO THE OF ACCURACY, MERCHANTABILITY OR FITNESS FOR A PARTICULAR PURPOSE, AND HEREBY DISCLAIM ANY AND ALL LIABILITY, DIRECT OR INDIRECT, FOR ANY DAMAGES OR LOSS RELATING TO OR RESULTING FROM THE USE OF THE DOCUMENT. THE DOCUMENT MAY BE MODIFIED, SUBJECT TO DEVELOPMENTS IN TECHNOLOGY, CHANGES TO THE STANDARDS, OR NEW LEGAL REQUIREMENTS. SEVERAL PRODUCTS AND COMPANY NAMES MENTIONED HEREIN MAY BE TRADEMARKS AND/OR REGISTERED TRADEMARKS OF THEIR RESPECTIVE COMPANIES. GS1 IS A REGISTERED TRADEMARK OF GS1 AISBL.



Table of Contents

1. Business Domain View	4
1.1. Introduction.....	4
1.2. References	4
2. Business Context	4
3. Business Transaction View	5
3.1. Business Transaction – Issue Operations Instruction.....	5
3.2. Business Transaction – Issue Operations Notification	6
4. Business Information View	8
4.1. Warehousing Operations Instruction.....	8
4.2. Warehousing Operations Notification	10
4.3. Warehousing Operations Common – Transaction.....	12
4.3.1. Warehousing Operations Common – WarehousingOperationsTransaction	12
4.4. Code Lists	14
5. Business Message Examples	14
5.1. Example 1	14
5.2. Example 2	15
6. Implementation Considerations	17
6.1. User Guide	17
6.2. Message Specific Considerations	17
7. Summary of Changes.....	17
7.1. BMS 3.1.....	17
7.2. BMS 3.2.....	17
8. Appendices	18
9. Acknowledgements	18
9.1.1. Work Group	18
9.1.2. Development Team Members	18

1. Business Domain View

1.1. Introduction

Message Definition

Warehousing Operations Instruction Message Definition

The Warehousing Operations Instruction message supports the inventory management process, and enables a Logistic Services Client (LSC) to inform his Logistic Services Provider (LSP) that the inventory status of goods needs to be changed.

Warehousing Operations Notification Message Definition

The Warehousing Operations Notification message supports the inventory management process, and enables a Logistic Services Provider (LSP) to inform his Logistic Services Client (LSC) that the inventory status of goods has been changed.

Principles

These messages support the warehouse operations process.

1.2. References

[LIM] GS1 Logistics Interoperability Model, 1.0, GS1 2007

[BRAD_WIO] BRAD Warehousing Inventory Management, 1.0, GS1 2012

[BMS_Shared] BMS Shared Common Library, 3.2, GS1 2014

[BMS_eCom] BMS eCom Common Library, 3.2, GS1 2014

[BMS_Warehousing] BMS Warehousing Common Library, 3.2, GS1 2014

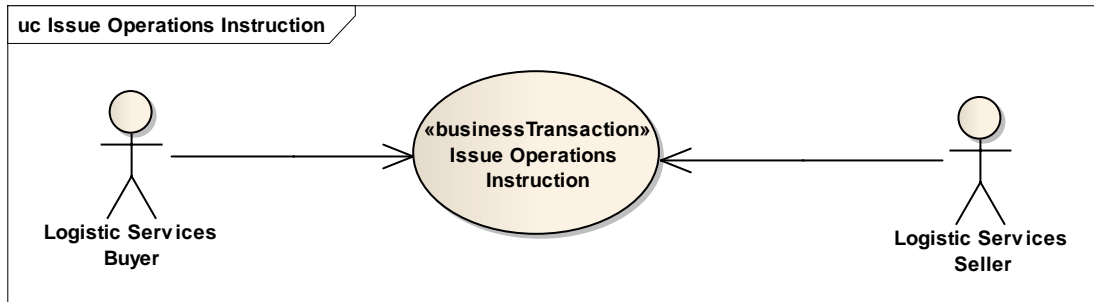
2. Business Context

Context Category	Value(s)
Industry	All
Geopolitical	All
Product	All
Process	Warehousing – Inventory Management Operations
System Capabilities	GS1 System
Official Constraints	None

3. Business Transaction View

3.1. Business Transaction – Issue Operations Instruction

Use case diagram



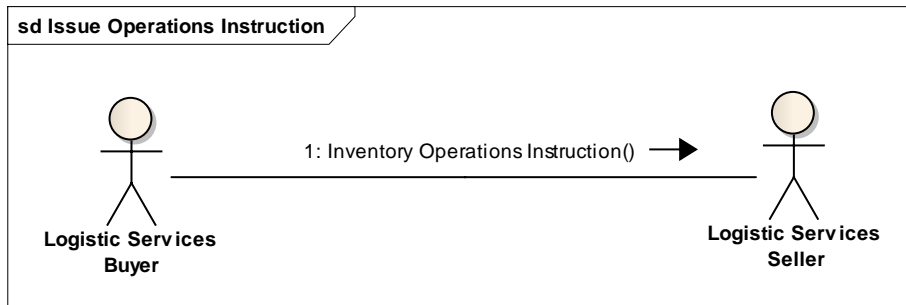
Use case description

Use Case Name	Issue Warehousing Operations Instruction
Use Case Description	The Logistic Services Buyer (LSB) informs the Logistic Services Seller (LSS) that inventory management operations need to be carried out.
Actors (Goal)	Logistic Services Buyer (LSB) Logistic Services Seller (LSS)
Performance Goals	Not applicable
Preconditions	Item master data of the goods been communicated to the Logistic Services Seller.
Post conditions	The Logistic Services Seller has been informed on the operations to be performed.
Main Scenario	<ul style="list-style-type: none"> ■ LSB generates the Warehousing Operations Instruction from his (enterprise resource planning) system. ■ LSB sends the Warehousing Operations Instruction to the LSS. ■ LSS receives the Warehousing Operations Instruction. ■ LSS processes the Warehousing Operations Instruction in his (warehouse management) system.
Alternative Scenario(s)	<u><<scenario name>></u> steps

Activity diagram

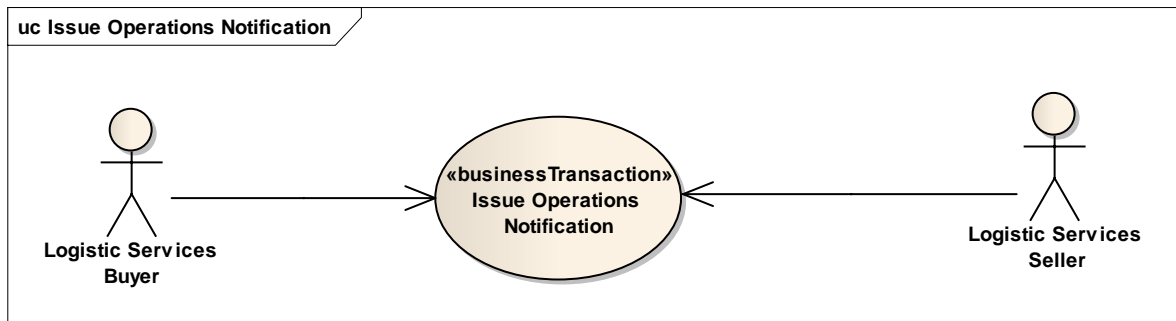
Not applicable

Communication diagram



3.2. Business Transaction – Issue Operations Notification

Use case diagram



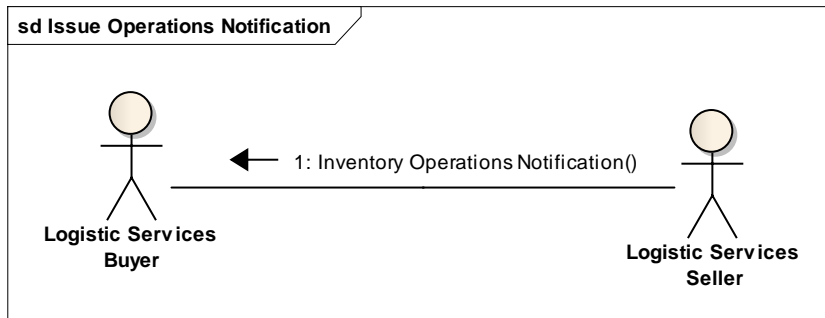
Use case description

Use Case Name	Issue Warehousing Operations Notification
Use Case Description	The Logistic Services Seller (LSS) informs the Logistic Services Buyer (LSB) on the status of inventory management operations that have been carried out.
Actors (Goal)	Logistic Services Buyer (LSB) Logistic Services Seller (LSS)
Performance Goals	Not applicable
Preconditions	<ul style="list-style-type: none"> The Logistic Services Seller has been informed on the goods to be shipped.
Post conditions	The Logistic Services Buyer has been informed on the status of the Operations shipment.
Main Scenario	<ul style="list-style-type: none"> LSS generates the Warehousing Operations Notification from his (warehouse management) system. LSS sends the Warehousing Operations Notification to the LSB. LSB receives the Warehousing Operations Notification. LSB processes the Warehousing Operations Notification in his (enterprise resource planning) system.
Alternative Scenario(s)	Not applicable

Activity diagram

Not applicable

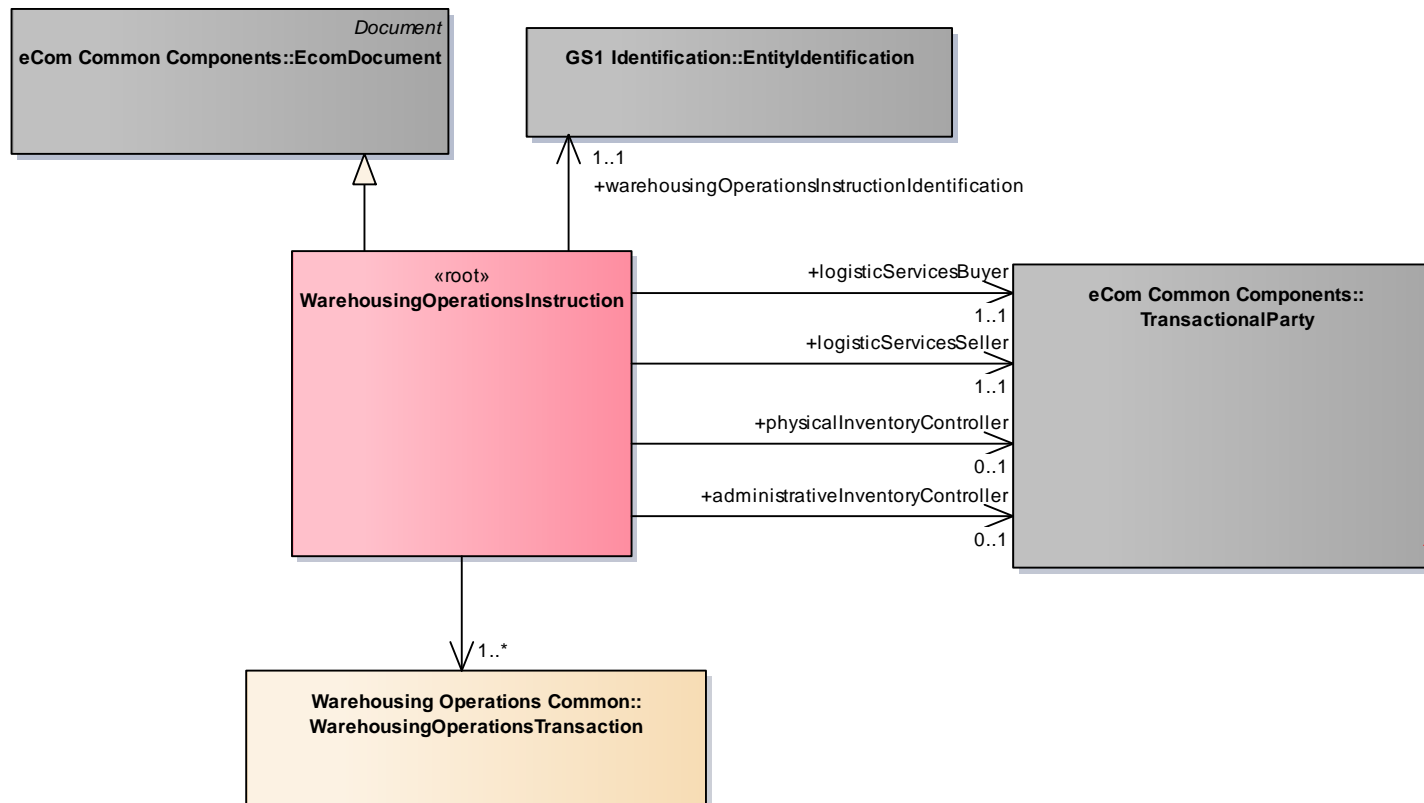
Communication diagram



4. Business Information View

4.1. Warehousing Operations Instruction

Class Diagram



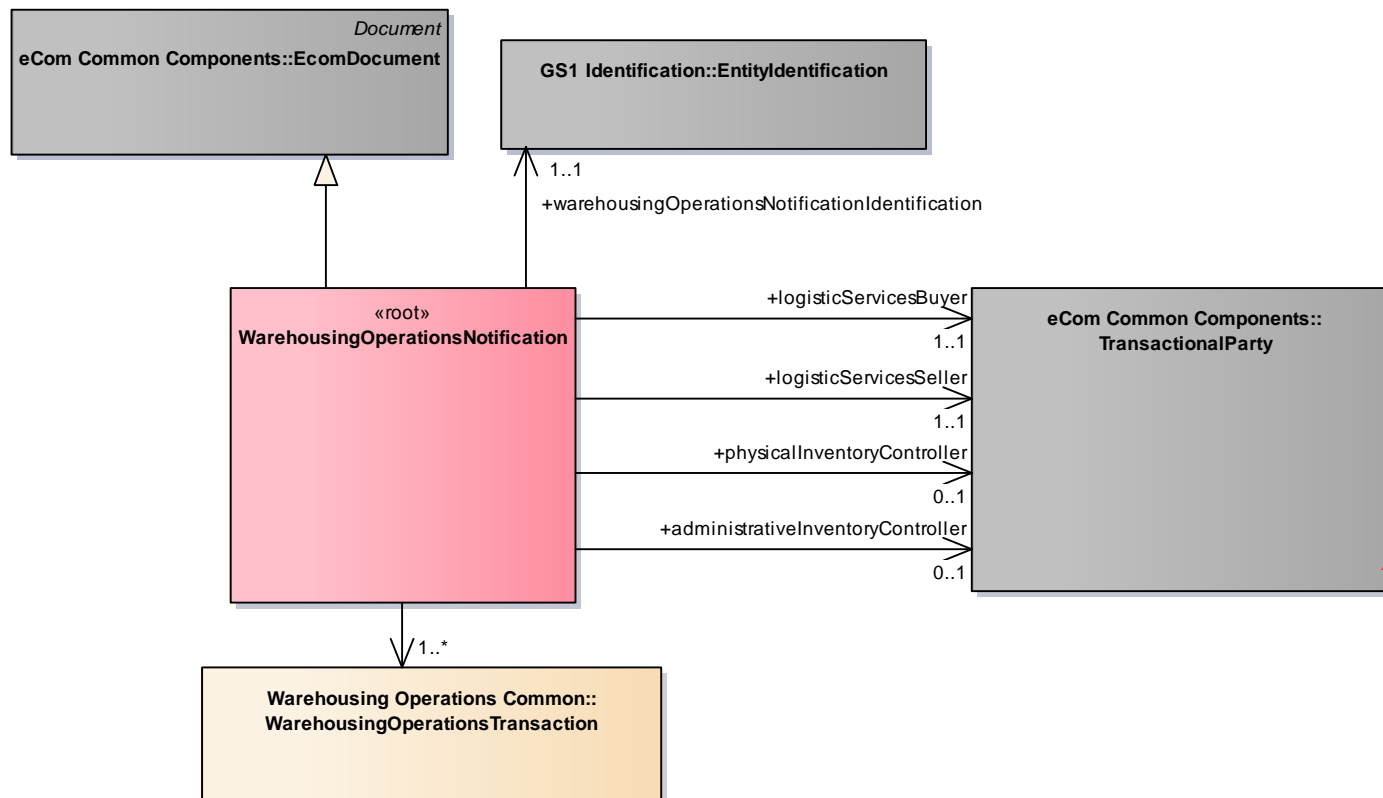
GDD Report

The content of the WarehousingOperationsInstruction class, its structure and component definitions can be accessed in the Global Data Dictionary: http://apps.gs1.org/GDD/bms/Version3_2/Pages/bieDetails.aspx?semanticURN=urn:gs1:gdd:bie:WarehousingOperationsInstruction

Content	Attribute / Role	Datatype / Secondaryclass	Multiplicity	Definition	Requirements
WarehousingOperationsInstruction				Message that supports the inventory management process, and enables a Logistic Services Client (LSC) to inform his Logistic Services Provider (LSP) that the inventory status of goods needs to be changed.	
Association	administrativeInventoryController	TransactionalParty	0..1	A party responsible for the control, accounting and reporting of inventory.	[brad-wim:iopins-5]
Association		WarehousingOperationsTransaction	1..*	Transactions specifying the required changes to the inventory status.	
Association	logisticServicesBuyer	TransactionalParty	1..1	A party that purchases logistics services from another party.	[brad-wim:iopins-2]
Association	logisticServicesSeller	TransactionalParty	1..1	A party that provides logistics services to another party.	[brad-wim:iopins-3]
Association	warehousingOperationsInstructionIdentification	EntityIdentification	1..1	The identification of the warehousing operations instruction document.	[brad-wim:iopins-1]
Generalization		EcomDocument		Basic information about the content of the message including version number, creation date and time.	WR 14-000110
Association	physicalInventoryController	TransactionalParty	0..1	A party responsible for storing of goods and related (physical) inventory operations.	[brad-wim:iopins-4]

4.2. Warehousing Operations Notification

Class Diagram



GDD Report

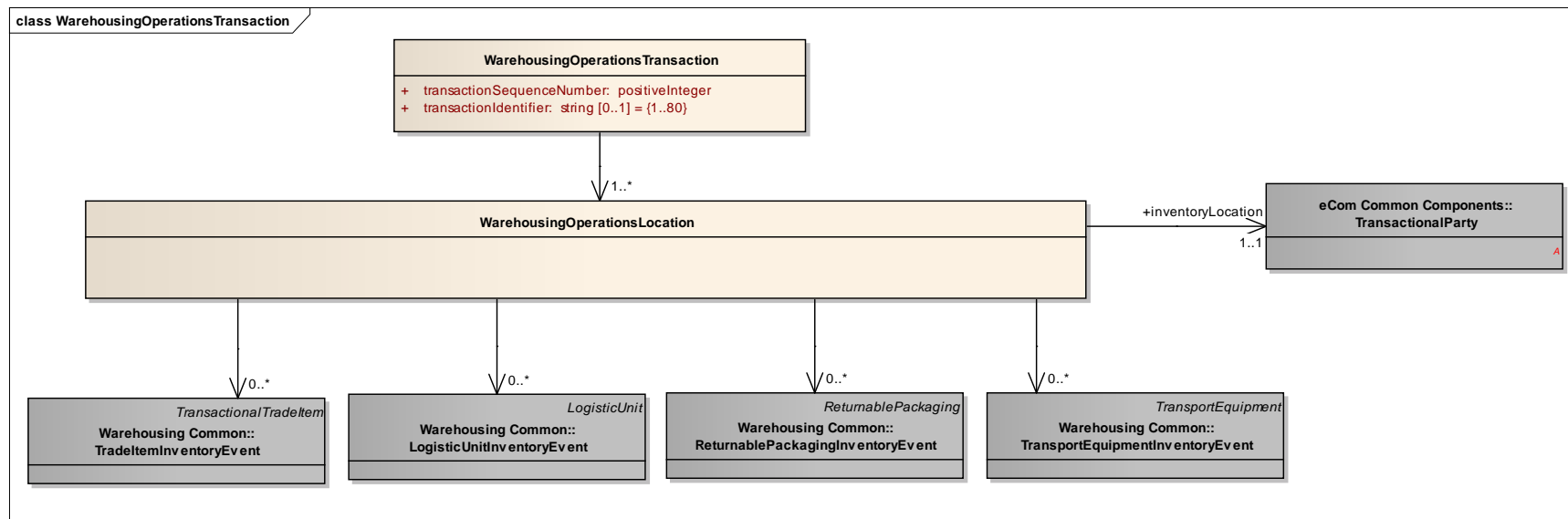
The content of the WarehousingOperationsNotification class, its structure and component definitions can be accessed in the Global Data Dictionary: http://apps.gs1.org/GDD/bms/Version3_2/Pages/bieDetails.aspx?semanticURN=urn:gs1:gdd:bie:WarehousingOperationsNotification

Content	Attribute / Role	Datatype / Secondaryclass	Multiplicity	Definition	Requirements
WarehousingOperationsNotification				Message that supports the inventory management process, and enables a Logistic Services Provider (LSP) to inform his Logistic Services Client (LSC) that the inventory status of goods has been changed.	
Association	logisticServicesBuyer	TransactionalParty	1..1	A party that purchases logistics services from another party.	[brad-wim:iopins-2]
Association	physicalInventoryController	TransactionalParty	0..1	A party responsible for storing of goods and related (physical) inventory operations.	[brad-wim:iopins-4]
Generalization		EcomDocument		Basic information about the content of the message including version number, creation date and time.	WR 14-000110
Association	warehousingOperationsNotificationIdentification	EntityIdentification	1..1	The identification of the warehousing operations notification document.	[brad-wim:iopinn-1]
Association	administrativeInventoryController	TransactionalParty	0..1	A party responsible for the control, accounting and reporting of inventory.	[brad-wim:iopins-5]
Association		WarehousingOperationsTransaction	1..*	Transactions specifying the changes to the inventory status.	
Association	logisticServicesSeller	TransactionalParty	1..1	A party that provides logistics services to another party.	[brad-wim:iopins-3]

4.3. Warehousing Operations Common – Transaction

4.3.1. Warehousing Operations Common – WarehousingOperationsTransaction

Class Diagram



GDD Report

The content of the WarehousingOperationsTransaction class, its structure and component definitions can be accessed in the Global Data Dictionary: http://apps.gs1.org/GDD/bms/Version3_2/Pages/bieDetails.aspx?semanticURN=urn:gs1:gdd:bie:WarehousingOperationsTransaction

Content	Attribute / Role	Datatype / Secondaryclass	Multiplicity	Definition	Requirements
WarehousingOperationsTransaction				A set of inventory updates that need to be carried out together for the transaction to complete successfully.	[brad-wim:iopins-6]
Association		WarehousingOperationsLocation	1..*	Details on the inventory events for this transaction, organized by inventory location.	

Content	Attribute / Role	Datatype / Secondaryclass	Multiplicity	Definition	Requirements
Attribute	transactionSequenceNumber	positiveInteger	1..1	Number that prescribes the sequence in which the transactions included in the message need to be processed.	[brad-wim:iopins-6.2]
Attribute	transactionIdentifier	string	0..1	Identifier of the transaction to be used for reference purposes.	[brad-wim:iopins-6.1]
WarehousingOperationsLocation				Details on the inventory events for this transaction, organized by inventory location.	
Association		TradeItemInventoryEvent	0..*	Information specifying an inventory activity of one or more trade items (of the same type) at a specific sub-location at a specific point in time.	[brad-wim:iopins-6.3.2, 6.3.3, 6.3.6, 6.3.8, 6.3.9, 6.3.10, 6.3.11]]
Association	inventoryLocation	TransactionalParty	1..1	The inventory location related to the included inventory events.	[brad-wim:iopins-6.3.4]
Association		LogisticUnitInventoryEvent	0..*	Information specifying an inventory activity of a specific logistic unit at a specific sub-location at a specific point in time.	[brad-wim:iopins-6.3.7]
Association		TransportEquipmentInventoryEvent	0..*	Information specifying an inventory activity of one or more pieces of transport equipment (of the same type) at a specific sub-location at a specific point in time.	
Association		ReturnablePackagingInventoryEvent	0..*	Information specifying an inventory activity of one or more returnable packaging items (of the same type) at a specific sub-location at a specific point in time.	



Note: Reference Shared Common Library Business Message (BMS) Release 3.2.0 and eCom Domain Common Library Business Message (BMS) Release 3.2.0 for all common information.

4.4. Code Lists

Not applicable



Note: Refer to the Global Data Dictionary (GDD) for the code values.

5. Business Message Examples

5.1. Example 1

Warehousing Operations Instruction

Instruction by the administrative inventory controller to change the customs status of item 01111111001110, location AB-1, from BONDED to FREE_CIRCULATION.

Attribute	Value
WarehousingOperationsInstruction	
creationDateTime	2012-07-11T12:15:00
documentStatusCode	ORIGINAL
documentActionCode	ADD
EntityIdentification (+warehousingOperationsInstructionIdentification)	Document ID: INOPI00123
TransactionalParty (+logisticServicesBuyer)	gln: 2222222000004
TransactionalParty (+logisticServicesSeller)	gln: 3333333000001
TransactionalParty (+administrativeInventoryController)	gln: 2222222000004
TransactionalParty (+physicalInventoryController)	gln: 3333333000001
WarehousingOperationsTransaction	
transactionSequenceNumber	1
transactionIdentifier	INOPI00123-1
WarehousingOperationsLocation	
TransactionalParty (+inventoryLocation)	
gln	3333333000018
TradeItemInventoryEvent	
gtin	01111111001110
tradeItemQuantity	200
eventIdentifier	1
inventoryBusinessStepCode	status_changing

Attribute	Value
inventoryDispositionCode	sellable_accessible
inventoryMovementTypeCode	DECREASE
InventorySubLocation (+)	
glnExtension	AB-1
AdministrativeUnit (+)	
administrativeUnitTypeCode	OPERATING_UNIT
internalAdministrativeUnitIdentification	123-E
InventoryDutyFeeTaxStatus (+)	
dutyFeeTaxTypeCode	IMP
customsWarehouseStatusCode	BONDED
TradeItemInventoryEvent	
gtin	01111111001110
tradeItemQuantity	200
eventIdentifier	2
inventoryBusinessStepCode	STATUS_CHANGING
inventoryDispositionCode	SELLABLE_ACCESSIBLE
inventoryMovementTypeCode	INCREASE
InventorySubLocation (+)	
glnExtension	AB-1
AdministrativeUnit (+)	
administrativeUnitTypeCode	OPERATING_UNIT
internalAdministrativeUnitIdentification	123-NE
InventoryDutyFeeTaxStatus (+)	
dutyFeeTaxTypeCode	IMP
customsWarehouseStatusCode	FREE_CIRCULATION

5.2. Example 2

Warehousing Operations Notification

Notification by the physical inventory controller on the damaging of 1 unit of item 01111111001110, location AB-1, customs status BONDED.

Element	Value
WarehousingOperationsNotification	creationDateTime: 2012-07-11T12:15:00 documentStatusCode: ORIGINAL documentActionCode: ADD

Element	Value
EntityIdentification (+warehousingOperationsNotificationIdentification)	Document ID: INOPN54031
TransactionalParty (+administrativeInventoryController)	gln: 222222000004
TransactionalParty (+physicalInventoryController)	gln: 333333000001
TransactionalParty (+logisticServicesSeller)	gln: 222222000004
TransactionalParty (+logisticServicesBuyer)	gln: 333333000001
WarehousingOperationsTransaction	transactionSequenceNumber 1 transactionIdentifier INOPN54031-1
WarehousingOperationsLocation	
- TransactionalParty (+inventoryLocation)	gln: 333333000018
TradeItemInventoryEvent	gtin: 01111111001110 tradeItemQuantity: 1 eventIdentifier: 2 inventoryBusinessStepCode: status_changing inventoryDispositionCode: sellable_accessible inventoryMovementTypeCode: DECREASE
- InventorySubLocation (+)	glnExtension: AB-1
- AdministrativeUnit (+)	administrativeUnitTypeCode: OPERATING_UNIT internalAdministrativeUnitIdentification: 123-E
- InventoryDutyFeeTaxStatus (+)	dutyFeeTaxTypeCode = IMP customsWarehouseStatusCode: BONDED
TradeItemInventoryEvent	gtin: 01111111001110 tradeItemQuantity: 1 eventIdentifier: 2 inventoryBusinessStepCode: status_changing inventoryDispositionCode: non_sellable_damaged inventoryMovementTypeCode: INCREASE
- InventorySubLocation (+)	glnExtension: AB-1
- AdministrativeUnit (+)	administrativeUnitTypeCode: OPERATING_UNIT internalAdministrativeUnitIdentification: 123-E
- InventoryDutyFeeTaxStatus (+)	dutyFeeTaxTypeCode = IMP customsWarehouseStatusCode: BONDED

6. Implementation Considerations

6.1. User Guide


The Functional User Guide contains more information about the structure and content of the Warehousing Operations Instruction and Notification message:
http://www.gs1.org/docs/ecom/xml/3/3.2/eCom-Trade_messages.html#WarehousingOperationsInstructionandNotification

6.2. Message Specific Considerations

Not applicable

7. Summary of Changes

Any change in the GS1 standards is done based on the Work Request (WR) submitted by the GS1 User Companies or Member Organisations. All Work Requests are documented in the Work Request system available on the GS1 website: <http://wr.gs1.org>. The system is accessible to registered users. New visitors need to register first, to be able to access it. WRs can be searched by the number referenced in tables below, see: Search Work Requests. The number starts with the two last digits of the year when it was submitted, followed by the consecutive number within that year.

 **Note:** WRs submitted earlier than February 2012 should be searched in Old Change Requests.

7.1. BMS 3.1

First publication

7.2. BMS 3.2

Change	Associated WR
<p>Added Attribute Value Pair at the root, line item and sub line item levels</p> <div> class WarehousingOperationsInstruction - maintenance view <div> <div>«root»</div> <div>WarehousingOperationsInstruction</div> <div>maintenance</div> <div>Defect: (New) 3.2 changed generalisation from Document to eComDocument class to include AVP (WR 14-110)</div> </div> </div> <div> class WarehousingOperationsNotification - maintenance view <div> <div>«root»</div> <div>WarehousingOperationsNotification</div> <div>maintenance</div> <div>Defect: (New) 3.2 changed generalisation from Document to eComDocument class to include AVP (WR 14-110)</div> </div> </div>	14-000110

8. Appendices

Not applicable

9. Acknowledgements

The following is a list of individuals (and their companies) who participated in the creation, review and approval of this BMS.

9.1.1. Work Group

Function	Name	Company / organisation
Co-Chair	Jaco Voorspuij	DHL
Co-Chair	Fred Kempkes	Unilever
Member	Andrew Jones	General Mills, Inc.
Member	Bonnie Ryan	GS1 Australia
Member	Kurt Herregodts	GS1 Belgium & Luxembourg
Member	Roman Strand	GS1 Germany
Member	Mia Lenman	GS1 Sweden
Member	Shan Welch	GS1 UK
Member	Geert Simmer	GSPRO
Member	Dr. Karlheinz Mevissen	HAVI Logistics
Member	Robin Kidd	Nestle
Member	Mandeep Sodhi	Nestle
Member	Marc Cox	Philips Electronics N.V.
Member	Nitin Vidwans	Walmart Stores, Inc.

9.1.2. Development Team Members

Function	Name	Organisation
GSMP Process Lead	Jean-Luc Champion	GS1 GO
Standards Content Lead	Coen Janssen, Ewa Iwicka	GS1 GO
Technical Development Lead	Ewa Iwicka	GS1 GO
Peer Review	Eric Kauz	GS1 GO