



Replenishment Request

Business Message Standard (BMS)

Release 3.2

01-Dec-2014, Issue 1



Document Summary

Document Item	Current Value
Document Title	Business Message Standard (BMS) - Replenishment Request
BMS Release	3.2
Document Version	Issue 1, 01-Dec-2014
Work Group Name	eCom SMG
BMS Template Version	2.4

Work Request Reference

Date of WR Submission to GSMP:	WR Submitter(s):	Refer to Work Request (WR) Number(s):
20-Aug-2008	GS1 Global Office	08-000209
27-Jul-2007	Accenture	07-000309
05-Nov-2004	GS1 Global Office	04-000211
07-Feb-2014	GS1 Germany	14-000021
20-Mar-2014	GS1 Slovenia	14-000044
25-Jun-2014	GS1 Global Office	14-000110

Business Requirements Document (BRAD) Reference

BRAD Title	BRAD Issue Date	BRAD Version
BRAD Upstream Standards – Demand & Supply Signals	01-Nov-2004	0.1.0
Replenishment – Business Requirement Document	30-Mar-2004	1.0.0
BMS eCom Domain Common Library		BMS Release 3.0.0
BMS Shared Common Library		BMS Release 3.0.0

Document Change History

Date of Change	Version	Changed By	Reason for Change	Summary of Change
12-Jan-2012	BMS 3.0 – Issue 1	Mark Van Eeghem	BMS Release 3.0	See summary of changes
01-May-2013	BMS 3.1 – Issue 1	Coen Janssen	BMS Release 3.1	See summary of changes
01-Dec-2014	BMS 3.2 – Issue 1	Ewa Iwicka	BMS Release 3.2	See summary of changes

Disclaimer

WHILST EVERY EFFORT HAS BEEN MADE TO ENSURE THAT THE GUIDELINES TO USE THE GS1 STANDARDS CONTAINED IN THE DOCUMENT ARE CORRECT, GS1 AND ANY OTHER PARTY INVOLVED IN THE CREATION OF THE DOCUMENT HEREBY STATE THAT THE DOCUMENT IS PROVIDED WITHOUT WARRANTY, EITHER EXPRESSED OR IMPLIED, REGARDING ANY MATTER, INCLUDING BUT NOT LIMITED TO THE OF ACCURACY, MERCHANTABILITY OR FITNESS FOR A PARTICULAR PURPOSE, AND HEREBY DISCLAIM ANY AND ALL LIABILITY, DIRECT OR INDIRECT, FOR ANY DAMAGES OR LOSS RELATING TO OR RESULTING FROM THE USE OF THE DOCUMENT. THE DOCUMENT MAY BE MODIFIED, SUBJECT TO DEVELOPMENTS IN TECHNOLOGY, CHANGES TO THE STANDARDS, OR NEW LEGAL REQUIREMENTS. SEVERAL PRODUCTS AND COMPANY NAMES MENTIONED HEREIN MAY BE TRADEMARKS AND/OR REGISTERED TRADEMARKS OF THEIR RESPECTIVE COMPANIES. GS1 IS A REGISTERED TRADEMARK OF GS1 AISBL.

Table of Contents

1. Business Domain View	5
1.1. Introduction.....	5
1.2. References	5
2. Business Context	5
3. Business Transaction View	6
3.1. Business Transaction – Replenishment Forecast	6
4. Business Information View	8
4.1. Replenishment Request.....	8
4.2. Replenishment Request Inventory Status Line Item.....	10
4.3. Replenishment Request Requirements Line Item	12
4.4. Code Lists	14
5. Business Message Examples	14
5.1. Example	14
6. Implementation Considerations	17
6.1. User Guide	17
6.2. Message Specific Considerations	17
7. Summary of Changes	18
7.1. BMS Release 3.0	18
7.2. BMS Release 3.1	18
7.3. BMS Release 3.2	19
8. Appendices	20
9. Acknowledgements	20
9.1.1. Work Group	20
9.1.2. Development Team Members	22

1. Business Domain View

1.1. Introduction

Message Definition

The Replenishment Request message contains the demand for given trade items and locations for specific time periods.

Principles

The replenishment request contains both the goods requirements as well as the inventory status for each trade item and location.

In the downstream supply chain, between retailer and manufacturer, the data is based on future demand put together as finished products and time series, but it can also be restricted to actual sales data for a certain period of time. The manufacturer needs to provide feedback on its availability to deliver, taking into account available inventories of both sides.

In the upstream supply chain, between manufacturer and material supplier, the data is based on material requirements for production and the timing, the availability of material supplier to deliver and the schedule for delivery. Inventories on both sides are taken into account for the actual delivery schedule.

Based on the delivery schedule (replenishment proposal), a transport and shipping planning can be derived.

1.2. References

Reference Name	Description
BMS eCom Domain Common Library Release 3.2	The documented design of components that are used in multiple messages within the eCom Domain.
BMS Shared Common Library Release 3.2	The documented design of components that are used in multiple messages within both the eCom Domain and GDSN
BRAD Upstream Standards - Demand & Supply Signals 0.1.0	
Replenishment – Business Requirement Document 1.0.0	

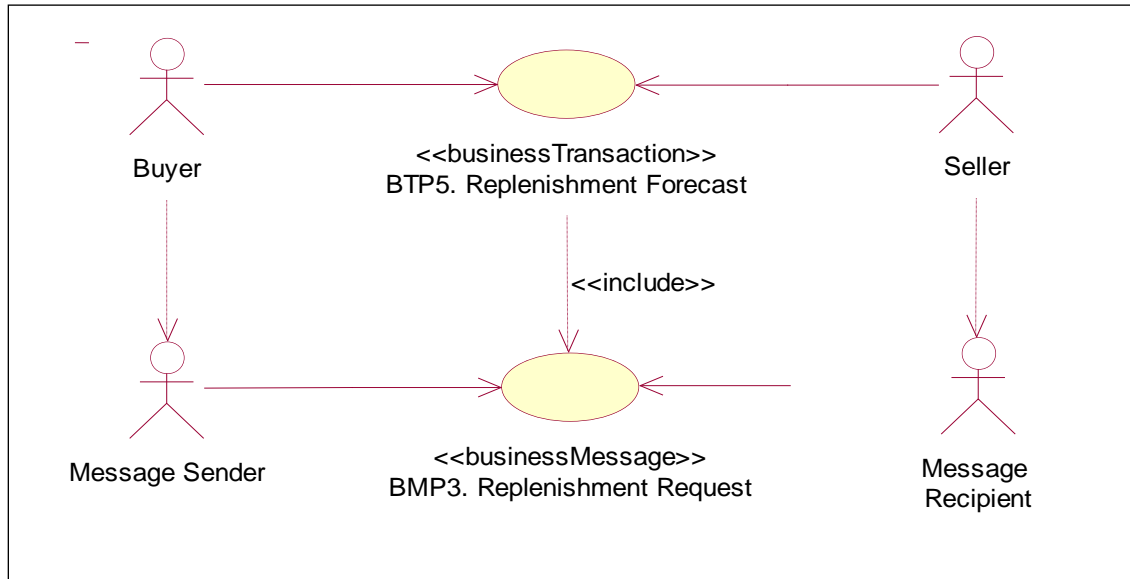
2. Business Context

Context Category	Value(s)
Industry	All
Geopolitical	All
Product	All
Process	Plan
System Capabilities	GS1 System
Official Constraints	None

3. Business Transaction View

3.1. Business Transaction – Replenishment Forecast

Use Case Diagram



Use Case Description

Use Case ID	BTP5									
Use Case Name	Replenishment Forecast									
Use Case Description	The Replenishment Forecast is sent by the manufacturer to the supplier and communicates at prescribed intervals the forecast for material consumption for given location(s) and/or material(s) for a specific interval as well as the inventory levels of items in these locations to enable production and replenishment planning through the supplier. The forecast figures communicated represent the gross requirements of the manufacturer.									
Actors (Goal)										
Performance Goals										
Preconditions	Gross Requirements: CALCULATED Inventory Status: CALCULATED									
Post conditions	Gross Requirements: COMMUNICATED Inventory Status: COMMUNICATED									
Scenario	<p>Begins when: Buyer has calculated his replenishment forecast.</p> <p>Continues with:</p> <table><tr><th>Step #</th><th>Actor</th><th>Activity Step</th></tr><tr><td>1.</td><td>Buyer</td><td>Sends Replenishment Request message to the Seller.</td></tr><tr><td>2.</td><td>Seller</td><td>Receives Replenishment Request message</td></tr></table>	Step #	Actor	Activity Step	1.	Buyer	Sends Replenishment Request message to the Seller.	2.	Seller	Receives Replenishment Request message
Step #	Actor	Activity Step								
1.	Buyer	Sends Replenishment Request message to the Seller.								
2.	Seller	Receives Replenishment Request message								

	Ends when: seller receives Replenishment Request message
Alternative Scenario	Not applicable
Business Rules	Not applicable

Activity Diagram(s)

Not Applicable

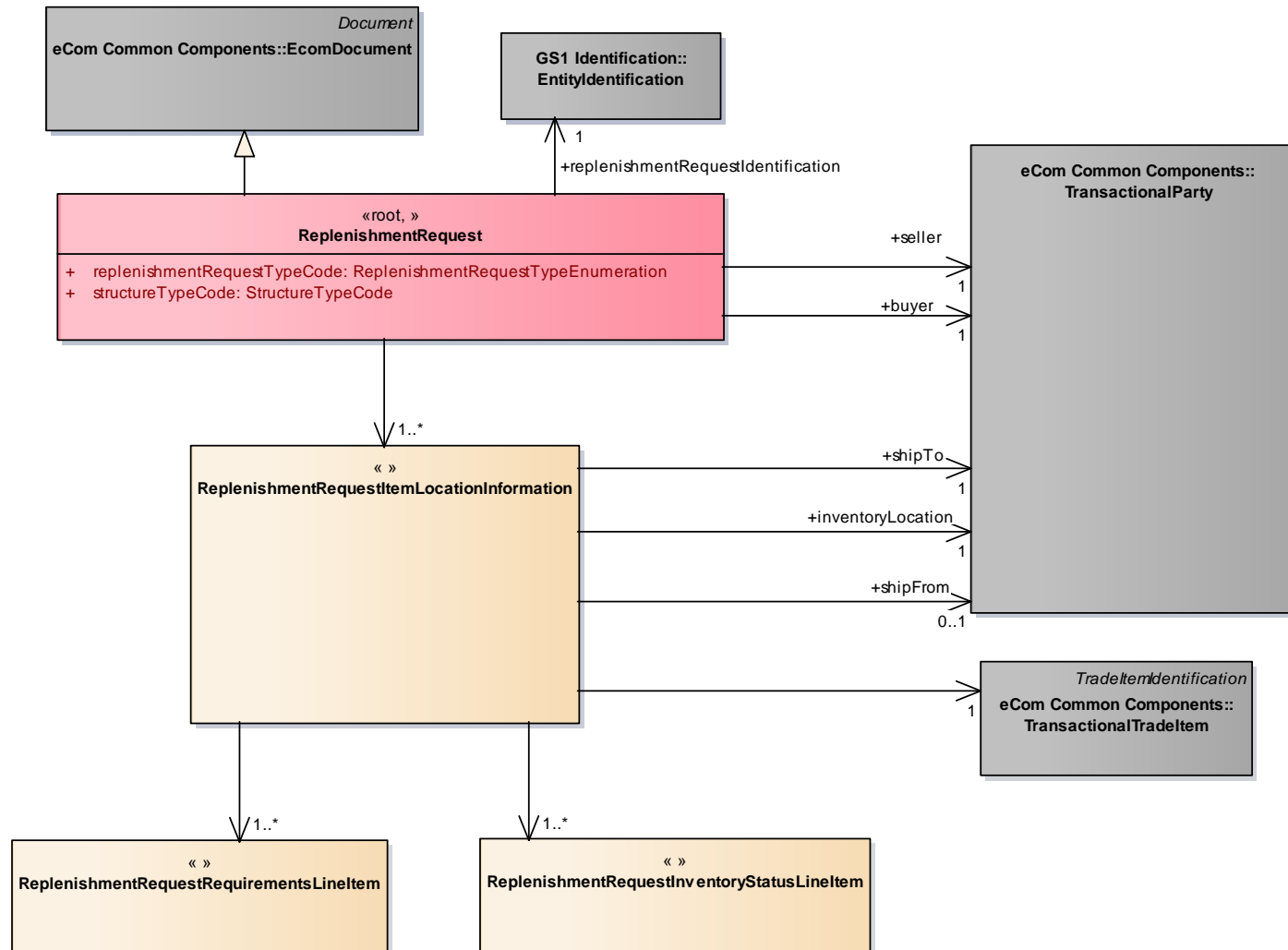
Sequence Diagram(s)

Not Applicable

4. Business Information View

4.1. Replenishment Request

Class Diagram



GDD Report

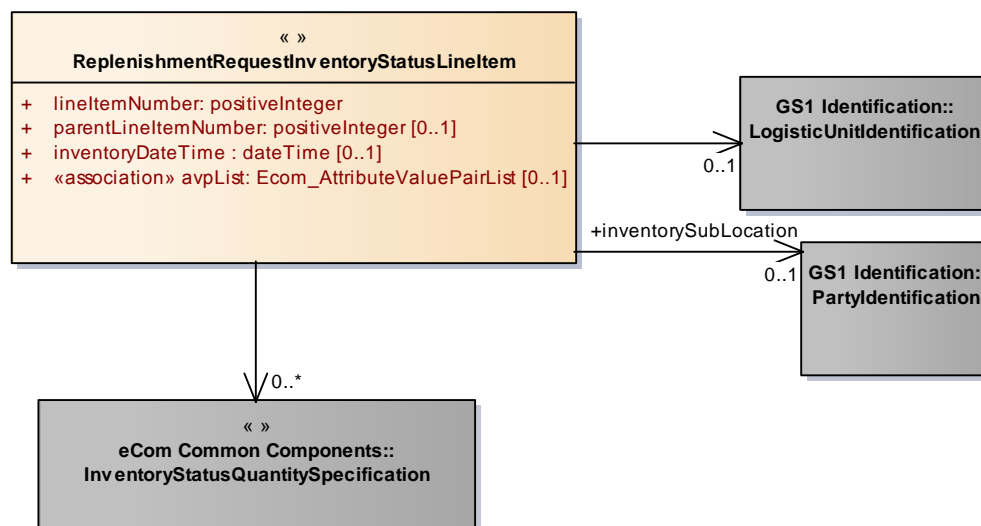
The content of the ReplenishmentRequest class, its structure and component definitions can be accessed in the Global Data Dictionary:
http://apps.gs1.org/GDD/bms/Version3_2/Pages/bieDetails.aspx?semanticURN=urn:gs1:gdd:bie:ReplenishmentRequest

Content	Attribute / Role	Datatype / Secondaryclass	Multiplicity	Definition	Requirements
Replenishment Request				Contains the material requirements and inventory status information from the buyer to the seller for given trade items and locations for specific time periods.	
Association	seller	TransactionalParty	1..1	Contains the identification of the party that is selling the goods.	
Association	replenishmentRequestIdentification	EntityIdentification	1..1	Unique replenishment request number assigned by the buying party.	
Generalization		EcomDocument		Basic information about the content of the message including version number, creation date and time.	WR 14-000110
Association	buyer	TransactionalParty	1..1	Contains the identification of the party that is buying the goods.	
Association		ReplenishmentRequestItemLocationInformation	1..*	Contains the Replenishment Request for given trade items and locations for specific time periods.	
Attribute	replenishmentRequestTypeCode	ReplenishmentRequestTypeEnumeration	1..1	Contains the type of goods requirements, gross or net.	renamed from replenishmentRequestDocumentType
Attribute	structureTypeCode	StructureTypeCode	1..1	Contains the type of grouping and sequence of the business document.	
Replenishment RequestItemLocationInformation				Contains the Replenishment Request for a given trade item and location for specific time periods.	
Association	shipTo	TransactionalParty	1..1	Contains the identification of the location whereto the required goods will be delivered.	
Association		TransactionalTradeItem	1..1	Contains the identification of the item for which the replenishment request is specified.	

Content	Attribute / Role	Datatype / Secondaryclass	Multiplicity	Definition	Requirements
Association	shipFrom	TransactionalParty	0..1	Contains the identification of the location wherefrom the required goods will be delivered.	
Association	inventoryLocation	TransactionalParty	1..1	Identification of the physical place at the receiving side where the items are to be stored.	
Association		ReplenishmentRequestRequirementsLineItem	1..*	The forecasted required quantities per time bucket.	
Association		ReplenishmentRequestInventoryStatusLineItem	1..*	Provides the details for the Replenishment Request Inventory Status Line Item.	

4.2. Replenishment Request Inventory Status Line Item

Class Diagram



GDD Report

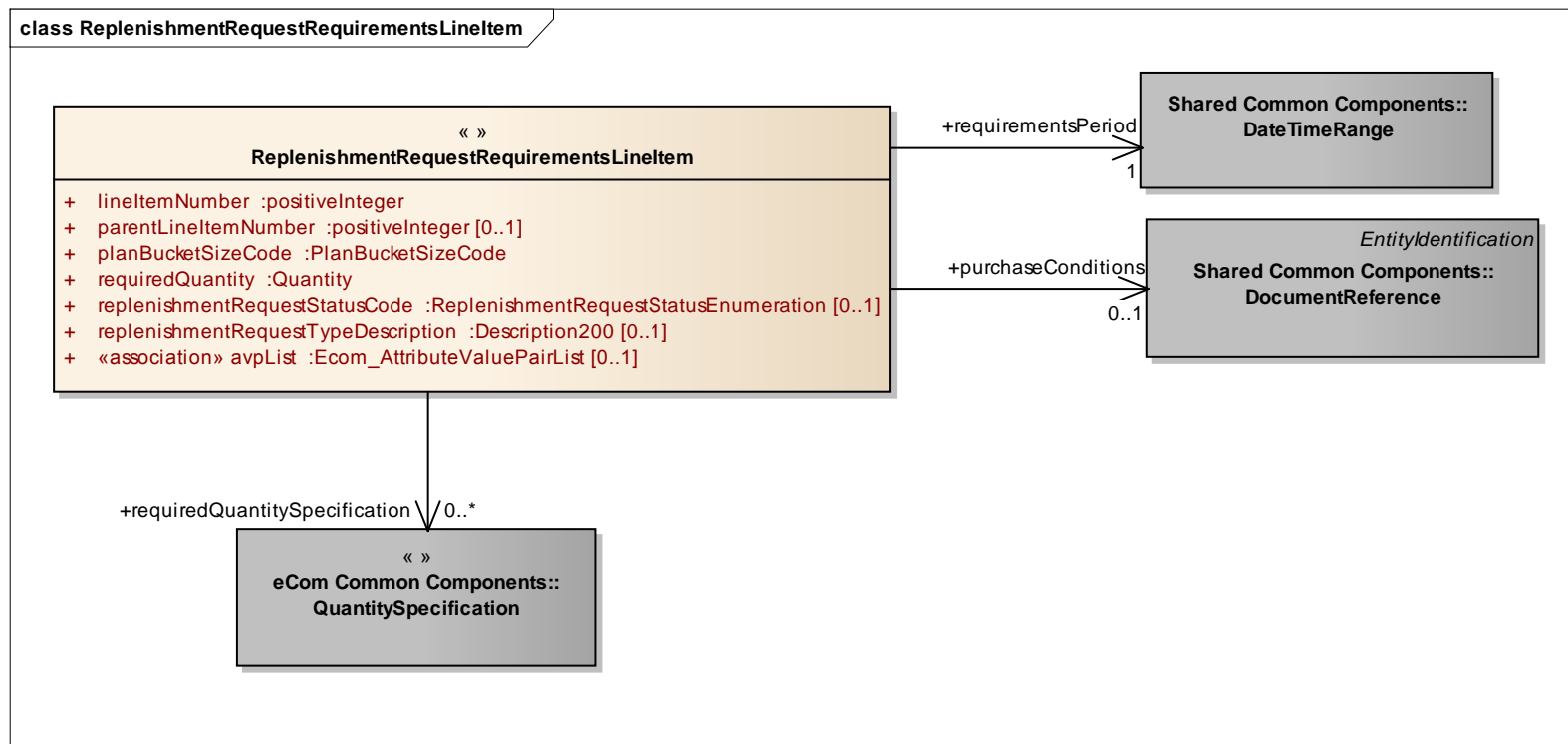
The content of the ReplenishmentRequestInventoryStatusLineItem class, its structure and component definitions can be accessed in the Global Data Dictionary:

http://apps.gs1.org/GDD/bms/Version3_2/Pages/bieDetails.aspx?semanticURN=urn:gs1:gdd:bie:ReplenishmentRequestInventoryStatusLineItem

Content	Attribute / Role	Datatype / Secondaryclass	Multiplicity	Definition	Requirements
Replenishment RequestInventoryStatusLineItem				Information specifying the inventory status of a specific trade item at a specific location at a specific point in time.	
Association		LogisticUnitIdentification	0..1	Detailed identification of the logistic unit that contains the goods.	
Association	inventorySubLocation	PartyIdentification	0..1	Detailed identification of the location at which the goods are stored.	
Association		InventoryStatusQuantitySpecification	0..*	Information about the stored goods per inventory status.	
Attribute	lineItemNumber	positiveInteger	1..1	Provides the line number associated to the Replenishment Request Inventory Status Line Item.	
Attribute	inventoryDateTime	dateTime	0..1	Date and time the inventory for this line item was assessed. If this is not provided the beginDateTime provided at the business document level represents the inventoryDateTime.	
Attribute	parentLineItemNumber	positiveInteger	0..1	The number of line item containing information about the parent of the current item. It allows establishing hierarchical link between the two items.	WR 14-000021 WR 14-000044
Attribute	avpList	Ecom_AttributeValuePairList	0..1	Temporary attributes introduced between minor versions.	WR 14-000110

4.3. Replenishment Request Requirements Line Item

Class Diagram



GDD Report

The content of the **ReplenishmentRequestRequirementsLineItem** class, its structure and component definitions can be accessed in the Global Data Dictionary:

http://apps.gs1.org/GDD/bms/Version3_2/Pages/bieDetails.aspx?semanticURN=urn:gs1:gdd:bie:ReplenishmentRequestRequirementsLineItem

Content	Attribute / Role	Datatype / Secondaryclass	Multiplicity	Definition	Requirements
Replenishment RequestRequirementsLineItem				The forecasted required quantities per time bucket.	

Content	Attribute / Role	Datatype / Secondaryclass	Multiplicity	Definition	Requirements
Association	requirementsPeriod	DateTimeRange	1..1	Contains the start and end dates and optionally start and end times of the requirements period.	
Association	requiredQuantitySpecification	QuantitySpecification	0..*	Specifies the cumulative quantity already received for the specified time bucket.	
Association	purchaseConditions	DocumentReference	0..1	Contains a reference to the commercial agreement under which the goods are supplied.	
Attribute	lineItemNumber	positiveInteger	1..1	Provides the line number associated to the Replenishment Request Line Item.	
Attribute	parentLineItemNumber	positiveInteger	0..1	The number of line item containing information about the parent of the current item. It allows establishing hierarchical link between the two items.	WR 14-000021 WR 14-000044
Attribute	planBucketSizeCode	PlanBucketSizeCode	1..1	Code specifying the duration of the requirements period.	renamed from timeBucketSizeType
Attribute	requiredQuantity	Quantity	1..1	The number of units required in the specified requirements period.	
Attribute	replenishmentRequestStatusCode	ReplenishmentRequestStatusEnumeration	0..1	Code specifying the status of the requirements: committed or planned.	attribute moved here from ReplenishmentCondition
Attribute	replenishmentRequestTypeDescription	Description200	0..1	Description of the type of requirement.	attribute moved here from ReplenishmentCondition, added Description to name
Attribute	avpList	Ecom_AttributeValuePairList	0..1	Temporary attributes introduced between minor versions.	WR 14-000110



Note: Reference Shared Common Library Business Message (BMS) Release 3.2.0 and eCom Domain Common Library Business Message (BMS) Release 3.2.0 for all common information.

4.4. Code Lists

Class	Codelist	GDD Link
ReplenishmentRequest	ReplenishmentRequestTypeEnumeration	http://apps.gs1.org/GDD/Pages/clDetails.aspx?semanticURN=urn:gs1:gdd:cl:ReplenishmentRequestTypeEnumeration
ReplenishmentRequestRequirementsLineItem	ReplenishmentRequestStatusEnumeration	http://apps.gs1.org/GDD/Pages/clDetails.aspx?semanticURN=urn:gs1:gdd:cl:ReplenishmentRequestStatusEnumeration
ReplenishmentRequest	StructureTypeCode	http://apps.gs1.org/GDD/Pages/clDetails.aspx?semanticURN=urn:gs1:gdd:cl:StructureTypeCode
ReplenishmentRequestRequirementsLineItem	PlanBucketSizeCode	http://apps.gs1.org/GDD/Pages/clDetails.aspx?semanticURN=urn:gs1:gdd:cl:PlanBucketSizeCode



Note: Refer to the Global Data Dictionary (GDD) for the code values.

5. Business Message Examples

5.1. Example

This is an example of a Replenishment Request message used to communicate gross requirements and inventory. The message is sent out on February 9th at 11 AM. The message is identified with the unique identifier RR295001.

The gross requirements are sent by the manufacturer - Buyer (GLN 5412345000013) to the material supplier - Seller (GLN 4098765000010).

Party Information

GS1 Global Location Number	Party Type
5412345000013	Buyer
4098765000010	Seller
4098765000997	Ship From Z
5412345000174	Ship to X
5412345000228	Ship to Y
8712345634537	Inventory Location

For informational purposes the manufacturer includes the name of his material requirements planner (Mr. Gilgamesh). The gross requirements are for two delivery sites, X (Ship To 5412345000174) and Y (Ship To 5412345000228).

The gross requirements are for one item, A (GTIN 40987650000223).

For item A and delivery site X the gross requirements are:

- Week February 11-17: 1000 units, of which 500 units have already been received.
- Week February 18-25: 200 units.

The inventory for item A on site X is 100 units (available for sale) and 15 (expired).

The contract to be used for the requirements in week February 11-17 (PC356987) was issued by the business unit of the material supplier (GLN 4098765000010). Within the contract line 23 refers to this item.

For the requirements in week February 18-25 no contract has been specified.

For item A and delivery site Y the gross requirements are:

- Week February 11-17: 300 units.
- Week February 18-25: 1200 units.

The inventory for item A on site Y is 50 units (available for sale).

The contract used for the requirements in week February 11-17 (PC356987) is the same as for delivery site X.

For the requirements in week February 18-25 no contract has been specified.

Message Example

Attribute	Value
ReplenishmentRequest	
creationDateTime	2005-02-09T11.00.00
documentStatusCode	ORIGINAL
replenishmentRequestTypeCode	GROSS_REQUIREMENTS_AND_INVENTORY
structureTypeCode	ITEM_BY_LOCATION
EntityIdentification (+replenishmentRequestIdentification)	
entityIdentification	RR295001
PartyIdentification (+contentOwner)	
Gln	5412345000013
TransactionalParty (+seller)	
Gln	4098765000010
TransactionalParty (+buyer)	
Gln	5412345000013
Contact	
personName	Gilgamesh
Responsibility	Material Requirements Planner
ReplenishmentRequestItemLocationInformation *1	
TransactionalParty (+shipTo)	
gln	5412345000174
TransactionalParty (+inventoryLocation)	
gln	8712345634537
TransactionalTradeItemIdentification	
gtin	40987650000223
ReplenishmentRequestRequirementsLineItem *1.1	
lineItemNumber	1

Attribute	Value
planBucketSizeCode	WEEK
requiredQuantity	1000
<i>DateTimeRange (+requirementsPeriod)</i>	
<i>TimePeriod</i>	
beginDate	2005-02-11
endDate	2005-02-17
<i>DocumentReference (+purchaseConditions)</i>	
entityIdentification	PC356987
lineItemNumber	23
<i>PartyIdentification (+contentOwner)</i>	
gln	4098765000010
<i>QuantitySpecification (+requiredQuantitySpecification)</i>	
quantitySpecificationType	RECEIVED
specificQuantity (value, unitOfMeasure)	500
ReplenishmentRequestRequirementsLineItem *1.2	
lineItemNumber	2
planBucketSizeCode	WEEK
requiredQuantity	1200
<i>DateTimeRange (+requirementsPeriod)</i>	
beginDate	2005-02-18
endDate	2005-02-25
ReplenishmentRequestInventoryStatusLineItem *1.3	
lineItemNumber	3
<i>InventoryStatusQuantitySpecification</i>	
inventoryStatusType	AVAILABLE_FOR_SALE
quantityOfUnits	100
<i>InventoryStatusQuantitySpecification</i>	
inventoryStatusType	EXPIRED
quantityOfUnits	10
ReplenishmentRequestItemLocationInformation *2	
<i>TransactionalParty (+shipTo)</i>	
gln	5412345000228
<i>TransactionalParty (+inventoryLocation)</i>	
gln	8712345674451
<i>TransactionalTradeItem</i>	
gtin	40987650000223

Attribute	Value
ReplenishmentRequestRequirementsLineItem *2.1	
lineItemNumber	4
planBucketSizeCode	WEEK
requiredQuantity	300
<i>DateTimeRange (+requirementsPeriod)</i>	
beginDate	2005-02-11
endDate	2005-02-17
<i>DocumentReference (+purchaseConditions)</i>	
entityIdentification	PC356987
lineItemNumber	23
<i>PartyIdentification (+contentOwner)</i>	
gln	4098765000010
ReplenishmentRequestRequirementsLineItem *2.2	
lineItemNumber	5
planBucketSizeCode	WEEK
requiredQuantity	1200
<i>DateTimeRange (+requirementsPeriod)</i>	
beginDate	2005-02-18
endDate	2005-02-25
ReplenishmentRequestInventoryStatusLineItem *2.1	
lineItemNumber	6
<i>InventoryStatusQuantitySpecification</i>	
inventoryStatusType	AVAILABLE_FOR_SALE
quantityOfUnits	50

6. Implementation Considerations

6.1. User Guide

The Functional User Guide contains more information about the structure and content of the Replenishment Request message: http://www.gs1.org/docs/ecom/xml/3/3.2/eCom-Trade_messages.html#ReplenishmentRequest

6.2. Message Specific Considerations

Not Applicable

7. Summary of Changes

Any change in the GS1 standards is done based on the Work Request (WR) submitted by the GS1 User Companies or Member Organisations. All Work Requests are documented in the Work Request system available on the GS1 website: <http://wr.gs1.org>. The system is accessible to registered users. New visitors need to register first, to be able to access it. WRs can be searched by the number referenced in tables below, see: Search Work Requests. The number starts with the two last digits of the year when it was submitted, followed by the consecutive number within that year.



Note: WRs submitted earlier than February 2012 should be searched in Old Change Requests.

7.1. BMS Release 3.0

Change	BMS Version	Associated CR Number
For BMS Release 3.0.0 Update to modelling methodology for Release 3.0.0	1.0.0	Not Applicable
For Issue Resolution: Cleaned up summary of changes Edited Business Example to reflect sequencing changes	1.0.0	Not Applicable
For XSD Peer Review: Updated Business Example: Under GoodsRequirementsItemLocationInformation *2, inventoryLocation was missing; this is a mandatory attribute.	1.0.0	Not Applicable
XSD Development (10-Oct-2011) Updated Business Example, renamed GoodsRequirementsItemLocationInformation into ReplenishmentRequestItemLocationInformation Removed {1..80} restriction in replenishmentRequestTypeDescription	1.0.0	Not Applicable
Public Review Removed the following code values from ReplenishmentRequestTypeEnum <ul style="list-style-type: none"> ■ MATERIAL_REQUIREMENTS ■ MATERIAL_REQUIREMENTS_AND_INVENTORY 	1.0.0 (21-nov-2011)	Not applicable
Corrected example. Under GoodsRequirementsItemLocationInformation *1, inventoryLocation was missing; this is a mandatory attribute.	1.0.0 (28-nov-2011)	Not applicable
Publication <ul style="list-style-type: none"> ■ Added Copyright R in GS1 Logo ■ Changed Status to Approved ■ Removed year reference in footer copyright statement ■ Replaced Section 10 with updated AG Principles 	1.0.0	Not Applicable

7.2. BMS Release 3.1

No work requests. Indirect changes due to upgrade to new Shared and eCom Common libraries.

7.3. BMS Release 3.2

Change	Associated WR
<p>Added Attribute Value Pair at the root, line item and sub line item levels</p> <div> class ReplenishmentRequest - maintenance view <div> <div>«root, »</div> <div>ReplenishmentRequest</div> <div> + replenishmentRequestTypeCode :ReplenishmentRequestTypeEnumeration + structureTypeCode :StructureTypeCode </div> <div> maintenance Change: (Verified) 3.2 changed generalisation from Document to eComDocument class to include AVP (WR 14-110) </div> </div> </div>	14-000110
<ul style="list-style-type: none"> ■ Add a reference to parent line number to all Lineltem classes, to support hierarchical items (WRs 14-021 & 14-044) ■ Added Attribute Value Pair at the root, line item and sub line item levels (WR 14-110) <div> class ReplenishmentRequestRequirementsLineltem - maintenance view <div> <div>« »</div> <div>ReplenishmentRequestRequirementsLineltem</div> <div> + lineltemNumber :positiveInteger + parentLineltemNumber :positiveInteger [0..1] + planBucketSizeCode :PlanBucketSizeCode + requiredQuantity :Quantity + replenishmentRequestStatusCode :ReplenishmentRequestStatusEnumeration [0..1] + replenishmentRequestTypeDescription :Description200 [0..1] + «association» avpList :Ecom_AttributeValuePairList [0..1] </div> <div> maintenance Change: (Verified) 3.2 added +avpList (WR 14-110) Change: (Verified) 3.2 added +parentLineltemNumber (WR 14-021 & 14-044) </div> </div> </div>	14-000021 14-000044 14-000110

Change	Associated WR
<ul style="list-style-type: none"> ■ Add a reference to parent line number to all Lineltem classes, to support hierarchical items (WRs 14-021 & 14-044) ■ Added Attribute Value Pair at the root, line item and sub line item levels (WR 14-110) 	14-000021 14-000044 14-000110
<div> <div>class ReplenishmentRequestInventoryStatusLineltem - maintenance view</div> <div> <div>« »</div> <div>ReplenishmentRequestInventoryStatusLineltem</div> <div> + lineltemNumber :positiveInteger + inventoryDateTime :dateTime [0..1] + parentLineltemNumber :positiveInteger [0..1] + «association» avpList :Ecom_AttributeValuePairList [0..1] </div> <div> <i>maintenance</i> Change: (Verified) 3.2 added +avpList (WR 14-110) Change: (Verified) 3.2 added +parentLineltemNumber (WR 14-021 & 14-044) </div> </div> </div>	

8. Appendices

Not Applicable

9. Acknowledgements

The following is a list of individuals (and their companies) who participated in the creation, review and approval of this BMS.

9.1.1. Work Group

Function	Name	Company / organisation
Co-chair	Rossner (Pottier), Natascha	GS1 France
Co-chair	Schmidt, Tom Eric	August Storck KG
Member	Bemrose, Jonathan	R&R Ice Cream
Member	Bodemer, Petra	dm-drogerie markt GmbH + Co. KG
Member	Boikanyo, Rebhone	GS1 South Africa / Consumer Goods Council of South Africa
Member	Canada, ON	M3B 3L1
Member	Carlson, Jim	General Mills, Inc.
Member	Chresta, Richard	GS1 Switzerland
Member	Cook, Don	Wal-Mart Stores, Inc.

Function	Name	Company / organisation
Member	Cox, Marc	Philips Electronics N.V.
Member	Darnell, David	Systrends
Member	De Flou, Nele	GS1 Belgium & Luxembourg
Member	Dicks, Arne	GS1 Germany
Member	Duvinger, Karina	GS1 Sweden
Member	Foerderer, Klaus	GS1 Germany
Member	Gathmann, Stefan	GS1 Ireland
Member	Grangard, Anders	GS1 Global Office
Member	Harpell, Eileen	GS1 Community Room Staff
Member	Herregodts, Kurt	GS1 Belgium & Luxembourg
Member	Kempkes, Fred	Unilever N.V.
Member	Kernan, Brendan	GS1 Ireland
Member	Kidd, Robin	Nestle
Member	Krid, Anne-Claire	GS1 France
Member	Lanoue, Tom	General Mills, Inc.
Member	Laur, Rita	GS1 Canada
Member	Lenman, Mia	GS1 Sweden
Member	Lerch, Hanjoerg	METRO Group
Member	Moberg, Dale	Axway
Member	Montes de Oca, Alejandra	GS1 Mexico
Member	Ng, Ella	GS1 Australia
Member	Peelen, Esther	GS1 Netherlands
Member	Pelekies, Andreas	GS1 Germany
Member	Perrier, Patricia	GS1 France
Member	Przybilla, Christian	GS1 Germany
Member	Pujol, Xavier	GS1 Spain
Member	Racek, Greg	Wal-Mart Stores, Inc.
Member	Repetto, Mirko	GS1 Italy
Member	Robba, Steven	1WorldSync Holdings, Inc.
Member	Rosell, Pere	GS1 Spain
Member	Rosenberg, Steven	GS1 US
Member	Schmid, Sue	GS1 Australia
Member	Schneider, Christian	GS1 Switzerland
Member	Sehorz, Eugen	GS1 Austria
Member	Sharma, Vishal	General Mills, Inc.
Member	Shimazaki, Ayako	GS1 Japan
Member	Sion, Emilie	GS1 France

Function	Name	Company / organisation
Member	Souza, Nadia	GS1 Brasil
Member	Strand, Roman	GS1 Germany
Member	Tan, Milton	GS1 Malaysia
Member	Tompsett, Simon	Waitrose
Member	Trelle, Ute	1WorldSync Holdings, Inc.
Member	Tse, Steve	GS1 Hong Kong
Member	Tyson, Betty	Knouse Foods Cooperative, Inc
Member	Van den Bergh, Senne	GS1 Belgium & Luxembourg
Member	Van der Eijk, Pim	OASIS - Sonnenglanz Consulting BV
Member	Veldhuis, Saskia	Procter & Gamble Co.
Member	Welch, Shan	GS1 UK
Member	Westerkamp, Jan	GS1 Netherlands
Member	Wilson, Mary	GS1 US
Member	Windsperger, Bekki	Best Buy Co., Inc.
Member	Yang, Shaopeng	GS1 China
Member	Yusdiar, Dani	GS1 Indonesia
Member	Zwanziger, Greg	SUPERVALU

9.1.2. Development Team Members

Function	Name	Organisation
GSMP Process Lead	Jean-Luc Champion	GS1 Global Office
Standards Content Lead	Coen Janssen, Ewa Iwicka	GS1 Global Office
Technical Development Lead	Ewa Iwicka	GS1 Global Office
Peer Review	Eric Kauz	GS1 Global Office