



# **Receiving Advice**

## **Business Message Standard (BMS)**

*Release 3.1*

*1-May-2013, Issue 1*

## Document Summary

Document Item	Current Value
Document Title	Receiving Advice - Business Message Standard (BMS)
BMS Release	3.1
Document Version	Issue 1, 1-May-2013
Work Group Name	eCom SMG
BMS Template Version	2.3

## Change Request Reference

Date of CR Submission to GSMP:	CR Submitter(s):	Refer to Change Request (CR) Number(s):
15-Oct-2009	GS1 Australia, GS1 Germany, GS1 Netherlands	09-000240
15-Oct-2009	GS1 Australia, GS1 Germany, GS1 Netherlands	09-000239
15-Oct-2009	GS1 Australia, GS1 Germany, GS1 Netherlands	09-000238
15-Oct-2009	GS1 Australia, GS1 Germany, GS1 Netherlands	09-000236
20- Aug-2008	John Ryu, GS1	08-000209
29- Aug- 2007	Juan Francisco, Zurita Duque, Novozymes A/S	07-000408
05-Nov-2008	GS1	04-000211

## Business Requirements Document (BRAD) Reference

BRAD Title:	
BRAD Upstream Standards – Despatch, Receipt & Consumption	GS1, 2004
BRD Receiving Advice – Business Requirement Document	GS1, 2004
BRAD for Current Requirements Queue (Major Release 3)	GS1, 2010
BRAD Warehousing Inbound & Outbound Processes	GS1, 2012

## Document Change History

Date of Change	Version	Changed By	Reason for Change	Summary of Change
13-Jan-2012	5.0.0	Mark Van Eeghem	BMS Release 3.0.0 Publication	Noted in Summary of Changes
1-May-2013	BMS 3.1.0 issue 1	Coen Janssen	BMS Release 3.1.0	Noted in Summary of Changes

## Disclaimer

WHILST EVERY EFFORT HAS BEEN MADE TO ENSURE THAT THE GUIDELINES TO USE THE GS1 STANDARDS CONTAINED IN THE DOCUMENT ARE CORRECT, GS1 AND ANY OTHER PARTY INVOLVED

IN THE CREATION OF THE DOCUMENT HEREBY STATE THAT THE DOCUMENT IS PROVIDED WITHOUT WARRANTY, EITHER EXPRESSED OR IMPLIED, REGARDING ANY MATTER, INCLUDING BUT NOT LIMITED TO THE OF ACCURACY, MERCHANTABILITY OR FITNESS FOR A PARTICULAR PURPOSE, AND HEREBY DISCLAIM ANY AND ALL LIABILITY, DIRECT OR INDIRECT, FOR ANY DAMAGES OR LOSS RELATING TO OR RESULTING FROM THE USE OF THE DOCUMENT. THE DOCUMENT MAY BE MODIFIED, SUBJECT TO DEVELOPMENTS IN TECHNOLOGY, CHANGES TO THE STANDARDS, OR NEW LEGAL REQUIREMENTS. SEVERAL PRODUCTS AND COMPANY NAMES MENTIONED HEREIN MAY BE TRADEMARKS AND/OR REGISTERED TRADEMARKS OF THEIR RESPECTIVE COMPANIES. GS1 IS A REGISTERED TRADEMARK OF GS1 AISBL

# Table of Contents

<b>1. Business Domain View .....</b>	<b>5</b>
1.1. Problem Statement / Business Need .....	5
1.2. Objective .....	5
1.3. Audience .....	5
1.4. References .....	5
1.5. Acknowledgements .....	6
1.5.1. Work Group .....	6
1.5.2. Development Team Members .....	8
<b>2. Business Context .....</b>	<b>8</b>
<b>3. Business Transaction View .....</b>	<b>8</b>
3.1. Business Transaction - Receiving Advice .....	8
3.2. Business Transaction - Receipt Notification .....	11
<b>4. Business Information View .....</b>	<b>13</b>
4.1. Receiving Advice .....	14
4.2. Receiving Advice Line Item .....	17
4.3. Receiving Advice Logistic Unit .....	20
4.4. Code Lists .....	21
<b>5. Business Message Example .....</b>	<b>21</b>
<b>6. Implementation Considerations .....</b>	<b>22</b>
<b>7. Appendices .....</b>	<b>22</b>
<b>8. Summary of Changes .....</b>	<b>23</b>
8.1. BMS 3.0.0 .....	23
8.2. BMS 3.1.0 .....	23

# 1. Business Domain View

## 1.1. Problem Statement / Business Need

The business process of shipping and receiving requires the actors in this process to share information regarding goods shipped and goods received. The Receiving Advice is developed to provide the receiver of the shipment the capability to inform the shipper of actual goods received, compared to what was advised as being sent. Typical business uses of the receipt information can include – updating of inventory, identifying shipping discrepancies, and adjusting orders and related invoicing.

The Receiving Advice should have the capability to link to the information that makes up a Despatch Advice or Shipping Document, which provides detailed information about the content of a shipment of goods from the Shipper to the Receiver. With the capability of this link comes the ability to compare exactly what was received to what was indicated as sent on the Despatch Advice or Shipping Document. The established link between receipt and despatch information enables the comparison and in turn allows the Receiving Advice to contain a range of comparison information, from general to specific.

## 1.2. Objective

This standard defines the transaction model and data model for the following business message:

- Receiving Advice.

The objective of the Receiving Advice is to satisfy the business need as stated in section 1.1 above as well as to provide a format that is flexible to serve the actors' process goals based on trading partner agreements.

For example, the Receiving Advice can be used in correlation with the Despatch Advice or other shipment documentation to:

- Provide a simple acknowledgment that goods have been received
- Provide a detailed verification of actual goods received
- Provide notification of exceptions between shipment documentation (e.g. Despatch Advice and BOL) and actual receipts

## 1.3. Audience

Retailers, manufacturers, warehouses, material suppliers and any other third party such as a logistic service or 3PL provider involved in the despatch and receipt of goods.

## 1.4. References

Reference Name	Description
BMS eCom Domain Common Library Release 3.1.0	The documented design of components that are used in multiple messages within the eCom Domain.
BMS Shared Common Library Release 3.1.0	The documented design of components that are used in multiple messages within both GDSN and the eCom Domain.
BRAD Upstream Standards – Despatch, Receipt & Consumption 0.1.1	

Reference Name	Description
BRAD Receiving Advice 2.1.1	
Business Requirements Analysis document (BRAD) for Current Requirements Queue (Major Release 3)	This BRAD is used to consolidate a list of requirements that have been submitted and approved by the eCom BRG as individual change requests. As such, each change request may have a different business justification as described by the original submitter. These change requests are listed in the " <a href="#">Change Request Reference</a> " section.
BRAD Warehousing Inbound and Outbound Processes. [BRAD-WIO]	

## 1.5. Acknowledgements

### 1.5.1. Work Group

Function	Name	Company / organisation
Co-chair	Rossner (Pottier), Natascha	GS1 France
Co-chair	Schmidt, Tom Eric	August Storck KG
Member	Bemrose, Jonathan	R&R Ice Cream
Member	Bodemer, Petra	dm-drogerie markt GmbH + Co. KG
Member	Boikanyo, Rebhone	GS1 South Africa / Consumer Goods Council of South Africa
Member	Canada, ON	M3B 3L1
Member	Carlson, Jim	General Mills, Inc.
Member	Chresta, Richard	GS1 Switzerland
Member	Cook, Don	Wal-Mart Stores, Inc.
Member	Cox, Marc	Philips Electronics N.V.
Member	Darnell, David	Systrends
Member	De Flou, Nele	GS1 Belgium & Luxembourg
Member	Dicks, Arne	GS1 Germany
Member	Duvinger, Karina	GS1 Sweden
Member	Foerderer, Klaus	GS1 Germany
Member	Gathmann, Stefan	GS1 Ireland
Member	Grangard, Anders	GS1 Global Office
Member	Harpell, Eileen	GS1 Community Room Staff
Member	Herregodts, Kurt	GS1 Belgium & Luxembourg
Member	Kempkes, Fred	Unilever N.V.
Member	Kernan, Brendan	GS1 Ireland
Member	Kidd, Robin	Nestle
Member	Krid, Anne-Claire	GS1 France
Member	Lanoue, Tom	General Mills, Inc.

Function	Name	Company / organisation
Member	Laur, Rita	GS1 Canada
Member	Lenman, Mia	GS1 Sweden
Member	Lerch, Hanjoerg	METRO Group
Member	Moberg, Dale	Axway
Member	Montes de Oca, Alejandra	GS1 Mexico
Member	Ng, Ella	GS1 Australia
Member	Peelen, Esther	GS1 Netherlands
Member	Pelekies, Andreas	GS1 Germany
Member	Perrier, Patricia	GS1 France
Member	Przybilla, Christian	GS1 Germany
Member	Pujol, Xavier	GS1 Spain
Member	Racek, Greg	Wal-Mart Stores, Inc.
Member	Repetto, Mirko	GS1 Italy
Member	Robba, Steven	1WorldSync Holdings, Inc.
Member	Rosell, Pere	GS1 Spain
Member	Rosenberg, Steven	GS1 US
Member	Schmid, Sue	GS1 Australia
Member	Schneider, Christian	GS1 Switzerland
Member	Sehorz, Eugen	GS1 Austria
Member	Sharma, Vishal	General Mills, Inc.
Member	Shimazaki, Ayako	GS1 Japan
Member	Sion, Emilie	GS1 France
Member	Souza, Nadia	GS1 Brasil
Member	Strand, Roman	GS1 Germany
Member	Tan, Milton	GS1 Malaysia
Member	Tompsett, Simon	Waitrose
Member	Trelle, Ute	1WorldSync Holdings, Inc.
Member	Tse, Steve	GS1 Hong Kong
Member	Tyson, Betty	Knouse Foods Cooperative, Inc
Member	Van den Bergh, Senne	GS1 Belgium & Luxembourg
Member	Van der Eijk, Pim	OASIS - Sonnenglanz Consulting BV
Member	Veldhuis, Saskia	Procter & Gamble Co.
Member	Welch, Shan	GS1 UK
Member	Westerkamp, Jan	GS1 Netherlands
Member	Wilson, Mary	GS1 US
Member	Windsperger, Bekki	Best Buy Co., Inc.
Member	Yang, Shaopeng	GS1 China

Function	Name	Company / organisation
Member	Yusdiar, Dani	GS1 Indonesia
Member	Zwanziger, Greg	SUPERVALU

### 1.5.2. Development Team Members

Function	Name	Organisation
GSMP Process Lead	Jean-Luc Champion	GS1 Global Office
Standards Content Lead	Coen Janssen	GS1 Global Office
Technical Development Lead	Ewa Iwicka	GS1 Global Office
Peer Review	Eric Kauz	GS1 Global Office

## 2. Business Context

Context Category	Value(s)
Industry	All
Geopolitical	Global
Product	All
Process	Deliver
Official Constraints	None
Roles	Shipper, Ship From, Receiver, Ship To
System Capabilities	GS1 System, EANCOM, XML

## 3. Business Transaction View

### 3.1. Business Transaction - Receiving Advice

When the Receiver receives a shipment of goods from the Shipper, the Receiver compares the received goods to what was advised as despatched on the despatch advice or shipping documents, and creates and sends a Receiving Advice. The Receiver has the following options to choose from regarding what the Receiving Advice may contain:

- **Full** – details- Includes qualitative and/or quantitative details regarding everything received (all line items) whether or not there were exceptions between what was received and what was advised as being sent.
- **Exceptions** – Includes only qualitative and/or quantitative exceptions between what was received and what was advised as being sent.
- **Confirmation** – The acceptance of the receipt of goods.

#### Business Transaction Use Case Diagram

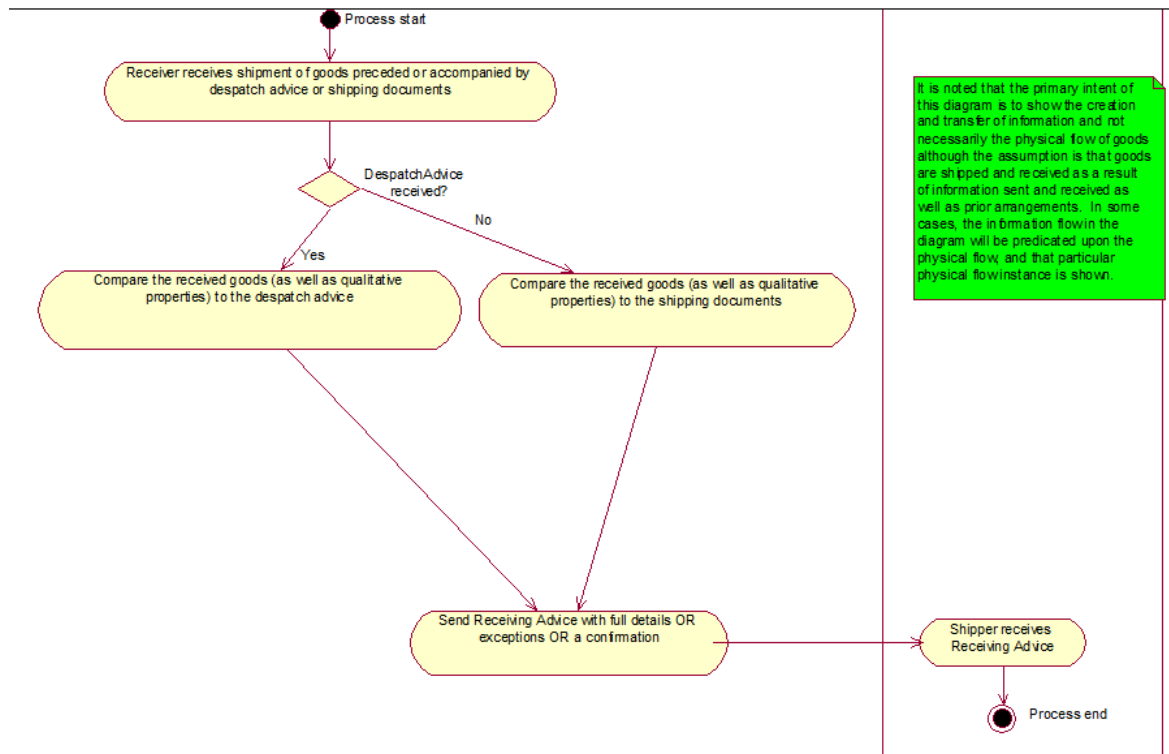
Not Applicable



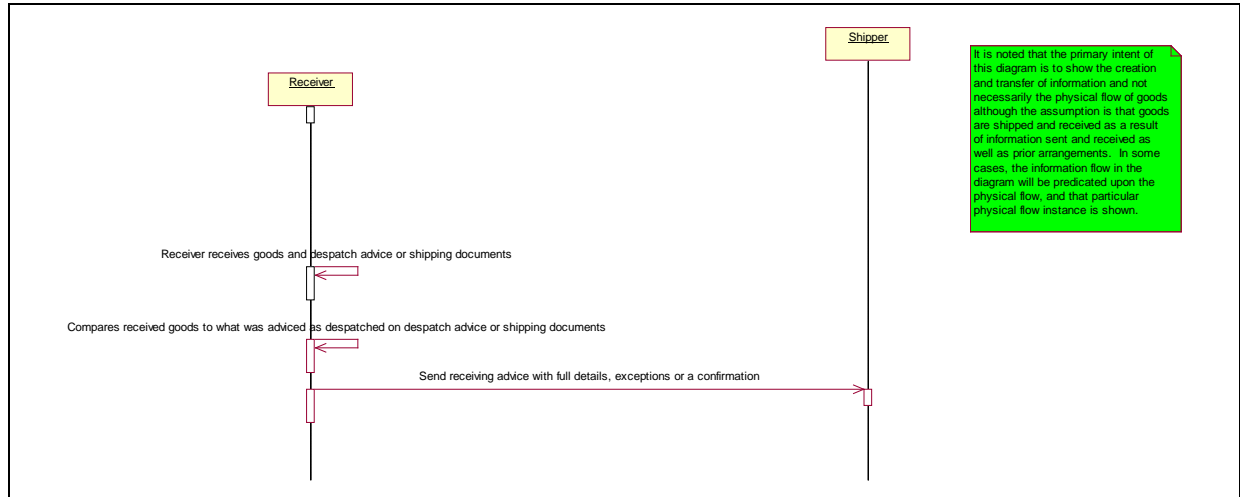
## Use Case Description

Use Case ID												
Use Case Name	Create and Send Receiving Advice											
Use Case Description	Describes a complete process whereby a Receiver generates a Receiving Advice based on information gained from received goods and physical or electronic documents from a Shipper.											
Actors (Goal)	Receiver and Shipper											
Performance Goals	None											
Preconditions	Master data alignment of locations (GLNs) and products (GTINs).											
Post conditions	Indication of exceptions, full-detailed comparison or confirmation between goods received and goods advised as despatched.											
Scenario	<p><b>Begins when:</b></p> <p>The Receiver receives a shipment of goods accompanied or preceded by the Despatch Advice or Shipping Documents.</p> <p><b>Continues with:</b></p> <table><tr><th>Step #</th><th>Actor</th><th>Activity Step</th></tr><tr><td>1.</td><td>Receiver</td><td>Sends Receiving Advice message to the Shipper</td></tr><tr><td>2.</td><td>Shipper</td><td>Receives Receiving Advice Message</td></tr></table> <p><b>Ends when:</b></p> <p>Receiver compares the received goods (as well as qualitative properties) to what was advised as being sent on the despatch advice or shipping documents.</p>			Step #	Actor	Activity Step	1.	Receiver	Sends Receiving Advice message to the Shipper	2.	Shipper	Receives Receiving Advice Message
Step #	Actor	Activity Step										
1.	Receiver	Sends Receiving Advice message to the Shipper										
2.	Shipper	Receives Receiving Advice Message										
Alternative Scenario	Not Applicable											
Business Transaction Rules	<table><tr><td>1.</td><td>Receiving Advice will include full details OR exceptions OR a confirmation of the received goods compared to what was advised as being despatched on the despatch advice or shipping documents</td></tr></table>	1.	Receiving Advice will include full details OR exceptions OR a confirmation of the received goods compared to what was advised as being despatched on the despatch advice or shipping documents									
1.	Receiving Advice will include full details OR exceptions OR a confirmation of the received goods compared to what was advised as being despatched on the despatch advice or shipping documents											

## Business Transaction Activity Diagram(s)

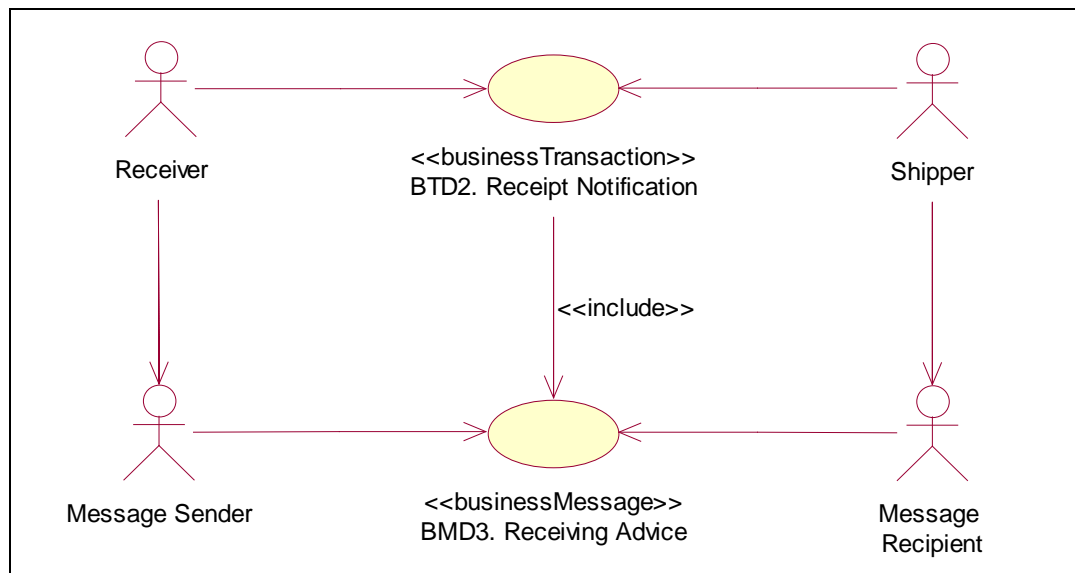


## Business Transaction Sequence Diagram(s)



## 3.2. Business Transaction - Receipt Notification

### Business Transaction Use Case Diagram



## Use Case Description

Use Case ID	BTD2									
Use Case Name	Receipt Notification									
Use Case Description	Describes the receipt notification process.									
Actors (Goal)	Receiver: To inform the Shipper about the contents of a received shipment. Shipper: To be informed about the contents and conditions of the shipment at arrival at the destination.									
Performance Goals	The receipt notification must be sent shortly after the receipt of the shipment in order to avoid invoicing errors.									
Preconditions	GOODS: RECEIVED, COUNTED AND CHECKED DISPATCH NOTIFICATION: RECEIVED (BY RECEIVER)									
Post conditions	RECEIPT NOTIFICATION: RECEIVED (BY SHIPPER)									
Scenario	<div><div>Begins when:</div><div>Continues with:</div><table><thead><tr><th>Step #</th><th>Actor</th><th>Activity Step</th></tr></thead><tbody><tr><td>2.</td><td>Receiver</td><td>Sends Receiving Advice to the Ship From party.</td></tr><tr><td>3.</td><td>Shipper</td><td>Receives the Receiving Advice.</td></tr></tbody></table><div>Ends when:</div></div>	Step #	Actor	Activity Step	2.	Receiver	Sends Receiving Advice to the Ship From party.	3.	Shipper	Receives the Receiving Advice.
Step #	Actor	Activity Step								
2.	Receiver	Sends Receiving Advice to the Ship From party.								
3.	Shipper	Receives the Receiving Advice.								
Alternative Scenario	Not Applicable									
Business Transaction Rules	Not Applicable									

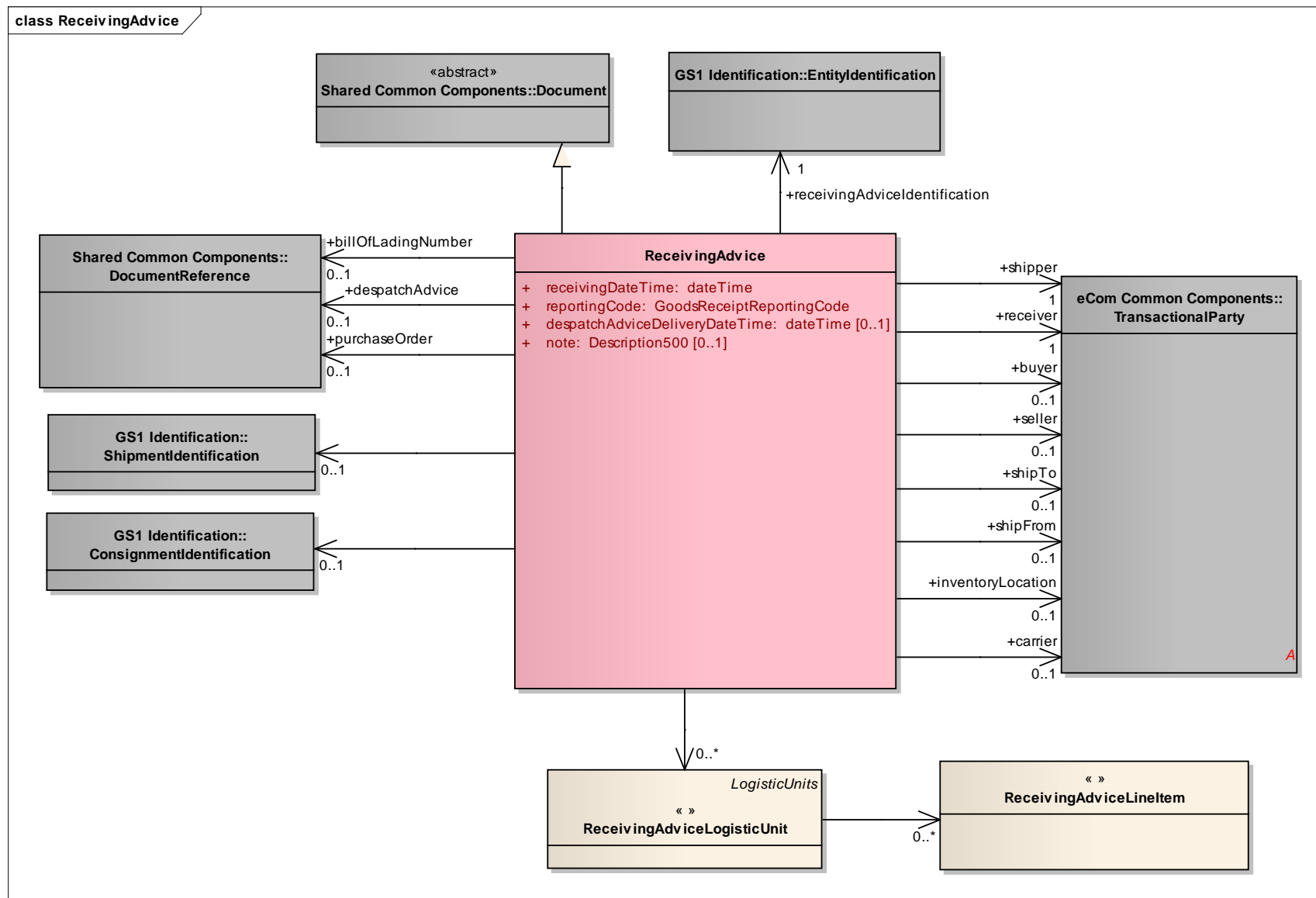
## 4. Business Information View



**Note:** Reference Shared Common Library BMS Release 3.0.0 and eCom domain Common Library BMS Release 3.0.0 for common information.

## 4.1. Receiving Advice

### Class Diagram



## GDD Report

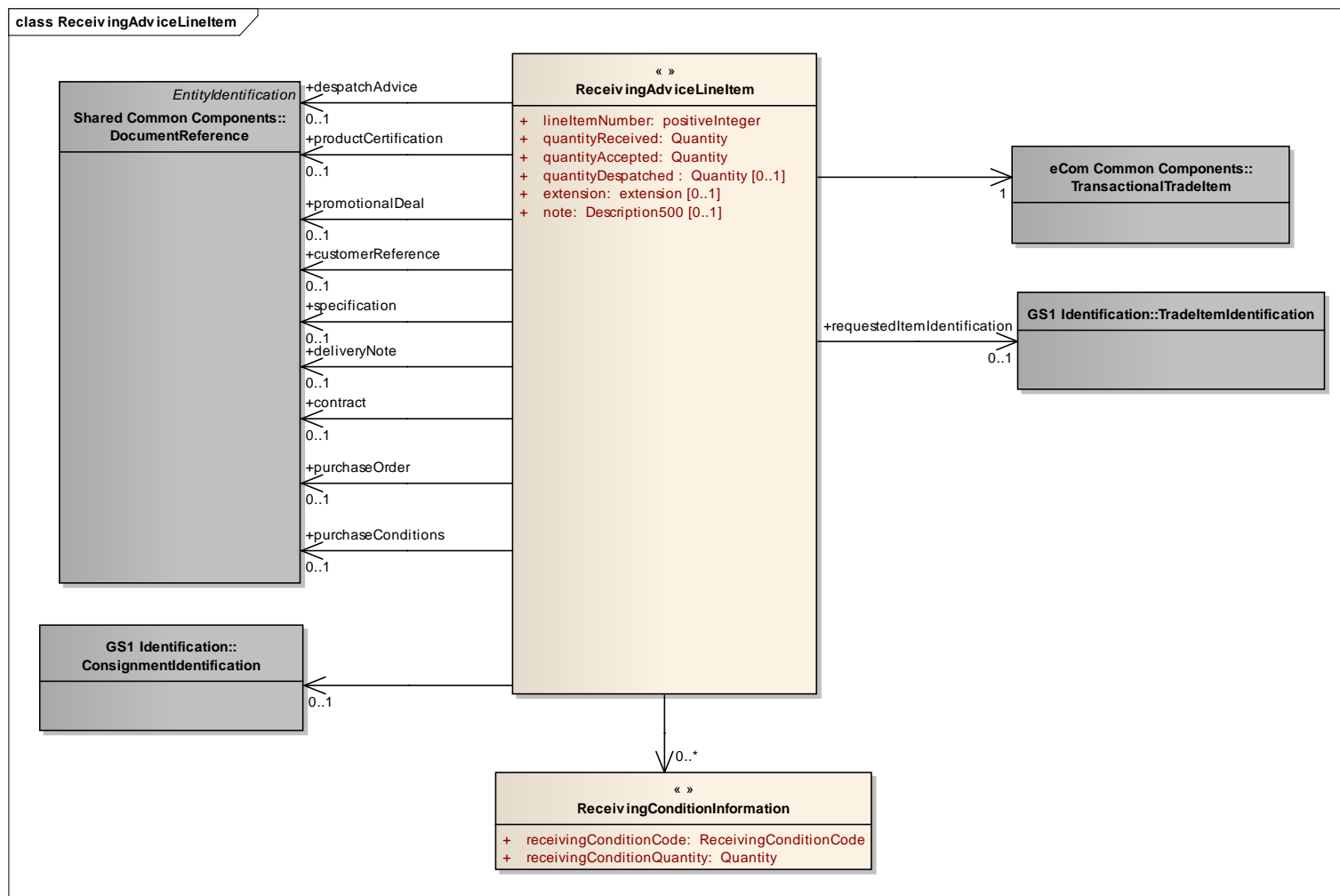
Content	Attribute / Role	Datatype /Secondary class	Multiplicity	Definition	Requirements
ReceivingAdvice				The Receiving Advice enables the receiver of the shipment to inform the shipper on the actual goods received, compared to what was advised as being sent.	
Association		ConsignmentIdentification	0..1	Number that identifies the consignment. (In case consignment consists of one shipment, it coincides with the shipment number).The Consignment Number, AI (401), is allocated by a freight forwarder, (or a carriers acting as a freight forwarder), or a consignor, but only if the prior agreement of the freight forwarder is given.	
Generalization		Document		Basic information about the content of the message including version number, creation date and time.	
Association	billOfLadingNumber	DocumentReference	0..1	Contains a reference to the bill of lading that accompanied the received goods.	
Association	despatchAdvice	DocumentReference	0..1	Contains the reference to the despatch advice message to which the information in the receiving advice refers.	
Association	purchaseOrder	DocumentReference	0..1	Reference to the business document that triggered the delivery of the goods.	BRAD RQ 09.239
Association	receivingAdviceIdentification	EntityIdentification	1..1	Contains the unique identifier of the business document.	
Association		ReceivingAdviceLogisticUnit	0..*	Contains detailed information about the received logistic units.	
Association		ShipmentIdentification	0..1	Number that identifies the shipment.	
Association	buyer	TransactionalParty	0..1	Identifies the party to which products or services are sold.	
Association	carrier	TransactionalParty	0..1	Uniquely identifies the entity that transports the shipment.	
Association	inventoryLocation	TransactionalParty	0..1	Identification of the location where the goods will be or have been stored.	

Content	Attribute / Role	Datatype /Secondary class	Multiplicity	Definition	Requirements
Association	receiver	TransactionalParty	1..1	A party who engages in receiving goods. In a commercial scenario this would be the customer.	
Association	seller	TransactionalParty	0..1	Identifies the party which sells products or services to a buyer.	
Association	shipFrom	TransactionalParty	0..1	Identification of the location from where goods will be or have been shipped.	
Association	shipper	TransactionalParty	1..1	A party who engages in shipping goods. In a commercial scenario this would be the supplier.	
Association	shipTo	TransactionalParty	0..1	Identification of the location to where goods will be or have been shipped.	
Attribute	receivingDateTime	dateTime	1..1	Contains the date and time the goods were actually received.	
Attribute	reportingCode	GoodsReceiptReportingCode	1..1	Contains the type of receipt notification that is being communicated: partial or full.	
Attribute	despatchAdviceDeliveryDateTime	dateTime	0..1	Contains the planned delivery date time that was communicated in the despatch advice.	
Attribute	note	Description500	0..1	Free text used to convey information that is not processed by applications. Only meant to present the information to a user as on a screen, in a browser, etc.	BRAD RQ 09.236.F



## 4.2. Receiving Advice Line Item

### Class Diagram



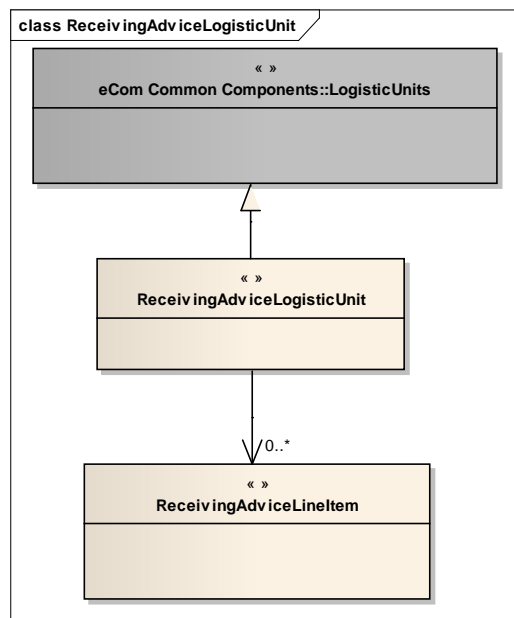
## GDD Report

Content	Attribute / Role	Datatype /Secondary class	Multipli city	Definition	Requirements
ReceivingAdviceLineItem				Contains detailed information about the received goods.	MR3 renamed
Association		ReceivingConditionInformation	0..*	Contains information about the state of the received goods, such as discrepancies, quality issues, surpluses, ....	
Association	requestedItemIdentification	TradeItemIdentification	0..1		
Association	purchaseConditions	DocumentReference	0..1	Reference to the business document that describes the commercial conditions under which the goods are delivered.	
Association		ConsignmentIdentification	0..1		
Association	despatchAdvice	DocumentReference	0..1	Contains the reference to the despatch advice line to which the information in the receiving advice line item refers	
Association	deliveryNote	DocumentReference	0..1	Reference to the physical document that accompanies the delivered goods.	
Association	purchaseOrder	DocumentReference	0..1	Reference to the business document that triggered the delivery of the goods.	BRAD RQ 09.239 (was present in 2.5 already)
Association	contract	DocumentReference	0..1	Reference to the contractual agreement under which the goods are delivered.	
Association		TransactionalTradeItem	1..1		
Association	promotionalDeal	DocumentReference	0..1	Reference to a number assigned by a vendor to a special promotion activity.	
Association	customerReference	DocumentReference	0..1	Reference to the end customer that will receive the goods.	MR3 renamed from customer
Association	specification	DocumentReference	0..1	An essential technical requirement for items, materials or services, including the procedures to be used to determine whether the requirement has been met. Specifications may also include requirements for preservation, packaging, packing, and marking.	

Content	Attribute / Role	Datatype /Secondary class	Multipli city	Definition	Requirements
Association	productCertification	DocumentReference	0..1	Reference to a number assigned by a governing body (or their agents) to a product which certifies compliance with a standard.	
Attribute	lineItemNumber	positiveInteger	1..1	Provides the line number associated to the Receiving Advice Line Item.	
Attribute	quantityAccepted	Quantity	1..1	Number of units accepted.	
Attribute	quantityReceived	Quantity	1..1	Number of units received.	
Attribute	quantityDespatched	Quantity	0..1	Number of units despatched.	
Attribute	extension	extension	0..1	Extension point for inclusion of context specific information, such as information specific to a particular type of product. Example: Extension for meat products.	
Attribute	note	Description500	0..1	Free text used to convey information that is not processed by applications. Only meant to present the information to a user as on a screen, in a browser, etc.	BRAD RQ 09.236.F
ReceivingConditionIn formation				Contains information about the state of the received goods, such as discrepancies, quality issues, surpluses, ....	
Attribute	receivingConditionCode	ReceivingConditionCode	1..1	Contains a code that specifies the condition of the received goods.	
Attribute	receivingConditionQuan tity	Quantity	1..1	Specification of discrepancies between quantity accepted, quantity received, quantity despatched	

## 4.3. Receiving Advice Logistic Unit

### Class Diagram



### GDD Report

Content	Attribute / Role	Datatype /Secondary class	Multiplicity	Definition	Requirements
ReceivingAdviceLogisticUnit				Contains detailed information about the received logistic units.	MR3 renamed
Generalization		LogisticUnits			
Association		ReceivingAdviceLineItem	0..*	Contains detailed information about the received goods.	

## 4.4. Code Lists



**Note:** Reference Shared Common Library BMS Release 3.0.0 and eCom domain Common Library BMS Release 3.0.0 for complete code lists.

## 5. Business Message Example

The following is an example of a receiving advice message. The message is sent out on February 9th 2011 at 11 AM, for goods received on February 8<sup>th</sup> at 4PM. The message is identified with the unique identifier 2005001. The content owner is the sending party, in this case the manufacturer (Receiver 8712345678913).

The receiving advice is sent by the manufacturer (Receiver 8712345678913) to the material supplier (Shipper 8812345678903).

The reported receipt consists of .....

ReceivingAdvice	
receivingDateTime	2011-02-08T16:00:00
reportingCode	FULL_DETAILS
<b>Document</b>	
creationDateTime	2011-02-09T11:00:00
documentStatusCode	ORIGINAL
<b>EntityIdentification (+receivingAdviceIdentification)</b>	
entityIdentification	2005001
<b>PartyIdentification (+contentOwner)</b>	
gln	8712345678913
<b>TransactionalPartyIdentification (+shipper)</b>	
gln	8812345678903
<b>TransactionalPartyIdentification (+receiver)</b>	
gln	8712345678913
<b>TransactionalPartyIdentification (+shipTo)</b>	
gln	8712345678920
<b>DocumentReference (+despatchAdvice)</b>	
<b>EntityIdentification</b>	
entityIdentification	2004000012
<b>PartyIdentification (+contentOwner)</b>	
gln	8812345678903
<b>ReceivingAdviceLogisticUnit</b>	
<b>LogisticUnits</b>	
packageType	PE (pallet, modular)
<b>LogisticUnitIdentification</b>	

ReceivingAdvice	
sscc	388123456700001011
<b>ReceivingAdviceLineItem</b>	
lineItemNumber	1
quantityReceived	90.50 KGM
quantityAccepted	50 KGM
quantityDespatched	100.50 KGM
<b>TradeItemIdentification (+requestedItemIdentification)</b>	
gtin	08712345678906
<b>DocumentReference (+despatchAdvice)</b>	
lineItemNumber	23
<b>ReceivingConditionInformation</b>	
receivingConditionCode	DAMAGED_PRODUCT_OR_CONTAINER
receivingConditionQuantity	40.50 KGM
<b>ReceivingConditionInformation</b>	
receivingConditionCode	GOOD_CONDITION
receivingConditionQuantity	50 KGM
<b>ReceivingConditionInformation</b>	
receivingConditionCode	QUANTITY_SHORT
receivingConditionQuantity	10 KGM

## 6. Implementation Considerations

Not Applicable

## 7. Appendices

Not Applicable

## 8. Summary of Changes

### 8.1. BMS 3.0.0

Change	BMS Version	Associated CR
Added architectural principles section to the document, updated the GDD reports, class diagrams and test data sections to reflect the changes required by the CRQ BRAD and MR3.0	Issue 5.0.0	09-236 09-238 09-239 09-240
<b>BMS Public Review:</b> <ul style="list-style-type: none"> <li>removed association from ReceivingAdvice to ReceivingAdviceLineItem, in order to have only one path to the line item (via ReceivingAdviceLogisticUnit).</li> </ul>	Issue 5.0.0	
<b>BMS Publication:</b> <ul style="list-style-type: none"> <li>Updated date of document</li> <li>Clean-up of Document Change History</li> <li>Removed year from copyright statement in footer</li> <li>Attribute note in class ReceivingAdvice was missing def in GDD report. Fixed: "Free text used to convey information that is not processed by applications. Only meant to present the information to a user as on a screen, in a browser, etc." Was OK in GDD itself.</li> <li>Renamed uniqueCreatorIdentification into entityIdentification in examples</li> <li>Changed lowerCamelCase into lowercase for all GS1 keys in examples</li> </ul>	Issue 5.0.0	

### 8.2. BMS 3.1.0

Change	Document Version	Associated CR Number
<div> <div>class ReceivingAdvice - maintenance view</div> <div> <div>ReceivingAdvice</div> <div> + receivingDateTime: dateTime  + reportingCode: GoodsReceiptReportingCode  + despatchAdviceDeliveryDateTime: dateTime [0..1]  + note: Description500 [0..1] </div> <div> <b>maintenance</b>  Change: (Verified) 3.1 added +buyer (BRAD WIO-RA-1)  Change: (Verified) 3.1 added +seller (BRAD WIO-RA-2) </div> </div> </div>	Issue 1	BRAD WIO-RA-1, 2
corrected the SSCC number in the example.	Issue 1	