



# **GS1 Business Message Profile**

## **UN/CEFACT Cross Industry Despatch Advice**

*BMP Release: 1.0\_09B, BRG Name: eCom*

*May-2012*



## Document Summary

Document Item	Current Value
Document Title	UN/CEFACT Cross Industry Despatch Advice
BMS Name	GS1 Business Message Profile
BMS Release	1.0_09B
BRG Name	eCom
Document Number	1.0_09B
Date Last Modified	May-2012
Status	Approved
Owner	
BMS Template Version	2.0

## Change Request Reference

Date of CR Submission to GSMP:	CR Submitter(s):	Refer to Change Request (CR) Number(s):

## Business Requirements Document (BRAD) Reference

BRAD Title:	BRD Date:	BRAD Version

## Document Change History

Date of Change	Version	Changed By	Reason for Change	Summary of Change	Model Build #
May-2012	1.0	Coen Janssen	First Version		

## Disclaimer

WHILST EVERY EFFORT HAS BEEN MADE TO ENSURE THAT THE GUIDELINES TO USE THE GS1 STANDARDS CONTAINED IN THE DOCUMENT ARE CORRECT, GS1 AND ANY OTHER PARTY INVOLVED IN THE CREATION OF THE DOCUMENT HEREBY STATE THAT THE DOCUMENT IS PROVIDED WITHOUT WARRANTY, EITHER EXPRESSED OR IMPLIED, REGARDING ANY MATTER, INCLUDING BUT NOT LIMITED TO THE OF ACCURACY, MERCHANTABILITY OR FITNESS FOR A PARTICULAR PURPOSE, AND HEREBY DISCLAIM ANY AND ALL LIABILITY, DIRECT OR INDIRECT, FOR ANY DAMAGES OR LOSS RELATING TO OR RESULTING FROM THE USE OF THE DOCUMENT. THE DOCUMENT MAY BE MODIFIED, SUBJECT TO DEVELOPMENTS IN TECHNOLOGY, CHANGES TO THE STANDARDS, OR NEW LEGAL REQUIREMENTS. SEVERAL PRODUCTS AND COMPANY NAMES MENTIONED HEREIN MAY BE TRADEMARKS AND/OR REGISTERED TRADEMARKS OF THEIR RESPECTIVE COMPANIES. GS1 IS A REGISTERED TRADEMARK OF GS1 AISBL.

## Table of Contents

<b>1. Business Domain View .....</b>	<b>4</b>
1.1. Problem Statement / Business Need .....	4
1.2. Objective.....	4
1.3. Audience.....	4
1.4. References .....	4
1.5. Acknowledgements .....	4
1.5.1. BRG Work Group.....	4
1.5.2. Design Team Members.....	5
<b>2. Business Context .....</b>	<b>5</b>
<b>3. Additional Technical Requirements Analysis.....</b>	<b>5</b>
3.1. Technical Requirements.....	5
<b>4. Business Transaction View .....</b>	<b>5</b>
4.1. Use Case Diagram.....	5
4.2. Use Case Description.....	6
4.3. Business Transaction Activity Diagram .....	7
4.4. Business Transaction Sequence Diagram .....	7
<b>5. Information Model (Including GDD Report) .....</b>	<b>8</b>
<b>6. Business Document Example.....</b>	<b>31</b>
<b>7. Implementation Considerations .....</b>	<b>31</b>
<b>8. Testing .....</b>	<b>32</b>
8.1. Pass / Fail Criteria.....	32
8.2. Test Data .....	32
<b>9. Appendices .....</b>	<b>33</b>
<b>10. Summary of Changes.....</b>	<b>33</b>

# 1. Business Domain View

## 1.1. Problem Statement / Business Need

Generally, the Despatch Advice enables one Shipper to provide information about the content of a shipment to one Receiver.

## 1.2. Objective

To provide a GS1 profiled schema based on the UN/CEFACT Cross Industry Despatch Advice meeting the GS1 requirements as currently supported in the GS1 BMS for the Despatch Advice.

## 1.3. Audience

The audience of the standards would be any participant in the global supply chain. This would include retailers, manufacturers, service providers, and other third parties.

## 1.4. References

Reference Name	Description
[Ref1]	GS1 BMS Despatch Advice
[Ref2]	GS1 BMS Common Library
[Ref3]	UN/CEFACT RSM Cross Industry Despatch Advice

## 1.5. Acknowledgements

The following is a list of individuals (and their companies) who participated in the creation, review and approval of this BMS.

### 1.5.1. BRG Work Group

Function	Name	Company / organisation
BRG Work Group Chair		
BRG Work Group Member		
BRG Work Group Member		
BRG Work Group Member		
BRG Work Group Member		
BRG Work Group Member		
BRG Work Group Member		
BRG Work Group Member		
BRG Work Group Member		
BRG Work Group Member		

Function	Name	Company / organisation
BRG Work Group Member		
BRG Work Group Member		
BRG Work Group Member		
BRG Work Group Member		
BRG Work Group Member		
BRG Work Group Member		

### 1.5.2. Design Team Members

Function	Name	Organisation
Modeler	Eric Kauz, Coen Janssen	GS1
XML Technical Designer		
EANCOM Technical Designer		
Peer Reviewer		

## 2. Business Context

Context Category	Value(s)
Industry	All
Geopolitical	Global
Product	All
Process	Deliver
System Capabilities	GS1 System
Official Constraints	None

## 3. Additional Technical Requirements Analysis

### 3.1. Technical Requirements

Not Applicable

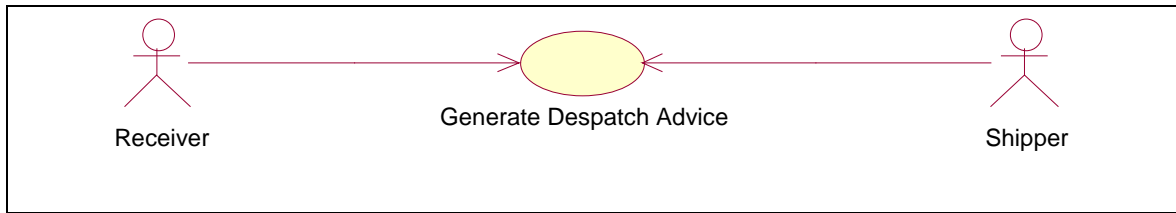
## 4. Business Transaction View

### 4.1. Use Case Diagram

The Despatch Advice must contain certain information, in line item format, to convey comparative information to the Receiver. The Despatch Advice therefore will provide for the identification of the individual lines within the Despatch Advice by line sequence number. The Despatch Advice may provide for a reference to other related documents, such as the Order, Delivery Note and Consignment. The

Despatch Advice may also include a reference to a contract and may include the line sequence numbers from the documents Order, Delivery Note, Consignment and Contract

**Figure 4-1** Use Case Generate Despatch Advice



## 4.2. Use Case Description

Use Case ID	GDA									
Use Case Name	Generate Despatch Advice									
Use Case Description	Describes a complete process whereby a Shipper generates a Despatch Advice based on information about the order and the product.									
Actors (Goal)	Receiver and Shipper									
Performance Goals	None									
Preconditions	Master data alignment of locations (GLNs) and products (GTINs).									
Post conditions	Check of the received physical goods with the information of the Despatch Advice and the check of the state of the goods themselves.									
Scenario	<p><b>Begins when...</b></p> <p>The Receiver receives a shipment of goods accompanied or preceded by the Despatch Advice or Shipping Documents.</p> <p><b>Continues with...</b></p> <table><tr><th>Step #</th><th>Actor</th><th>Activity Step</th></tr><tr><td>1</td><td>Shipper</td><td>Shipper issues the Despatch Advice containing the information of the actual physical shipment.</td></tr><tr><td>2</td><td>Receiver</td><td>Receiver receives Despatch Advice.</td></tr></table> <p><b>Ends when...</b></p> <p>If necessary, Receiver creates and sends Despatch Advice to Shipper indicating returned goods. *See role reversal note in activity and sequence diagrams.</p>	Step #	Actor	Activity Step	1	Shipper	Shipper issues the Despatch Advice containing the information of the actual physical shipment.	2	Receiver	Receiver receives Despatch Advice.
Step #	Actor	Activity Step								
1	Shipper	Shipper issues the Despatch Advice containing the information of the actual physical shipment.								
2	Receiver	Receiver receives Despatch Advice.								
Alternative Scenario	Not Applicable									
Related Requirements	Not Applicable									
Related Rules	Not Applicable									

## 4.3. Business Transaction Activity Diagram

**Figure 4-2** Activity Diagram Generate Despatch Advice



## 5. Information Model (Including GDD Report)

Element/Attribute		Annotation
CrossIndustryDespatchAdvice	..	rsm:CrossIndustryDespatchAdviceType <b>The TBG1 Cross Industry Despatch Advice.</b>
SpecifiedCIExchangedDocumentContext	1..1	ram:CIExchangedDocumentContextType <b>The scenario or setting of this Cross Industry (CI) Despatch Advice exchanged document, such as its business process application context.</b>
BusinessProcessSpecifiedCIDocumentContextParameter	0..unbounded	ram:CIDocumentContextParameterType <b>A business process CI document context parameter specified for this CI exchanged document context.</b>
ID	0..1	udt:IDType <b>The unique identifier of this CI document context parameter.</b>
Value	0..1	udt:TextType <b>The value, expressed as text, of this CI document context parameter.</b>
SpecifiedCIDocumentVersion	0..1	ram:CIDocumentVersionType <b>The CI document version specified for this CI document context parameter.</b>
ID	0..1	udt:IDType <b>The unique identifier for this CI document version.</b>
Name	0..1	udt:TextType <b>The name, expressed as text, of this CI document version.</b>
IssueDateTime	0..1	udt:DateTimeType <b>The date, time, date time or other date time value of issue of this CI document version.</b>
HeaderCIDDHExchangedDocument	1..1	ram:CIDDHExchangedDocumentType <b>A collection of data for a Cross Industry Delivery Despatch Advice Header (CIDDH) that is exchanged between two or more parties in written, printed or electronic form.</b>
ID	1..1	udt:IDType <b>The identifier of this CIDDH exchanged document.</b>
StatusCode	0..1	qdt:StatusCodeType <b>The code specifying the status of this CIDDH exchanged document.</b>
IssueDateTime	1..1	udt:DateTimeType <b>The date, time, date time, or other date time value for the issuance of this CIDDH exchanged document.</b>
CopyIndicator	0..1	udt:IndicatorType pattern false true <b>Indicates if the document is a copy (True) or an original (False). The indication of whether or not this CIDDH exchanged document is a copy.</b>
IncludedCINote	0..unbounded	ram:CINoteType <b>A Cross Industry (CI) note included in this CIDDH exchanged document.</b>
Subject	0..1	udt:TextType <b>The subject, expressed as text, of this CI note.</b>
Content	0..unbounded	udt:TextType <b>Content, expressed as text, of this CI note.</b>
SubjectCode	0..1	udt:CodeType <b>The code specifying the subject of this CI note.</b>
IssuerCITradeParty	0..1	ram:CITradePartyType <b>The trade party that issues this CIDDH exchanged document.</b>



Element/Attribute		Annotation
— ID	0..unbounded	udt:IDType <b>Identification of a party by use of a code other than the Global Location Number.</b> <b>A unique identifier of this CI trade party.</b>
— GlobalID	0..1	qdt:GLNIDType length 13 .. 13 <b>The Global Location Number (GLN) is the GS1 identification key of a physical location, legal or functional entity within an enterprise.</b> <b>A globally unique identifier of this CI trade party.</b>
— SpecifiedCIDDHSupplyChainTradeTransaction	1..1	ram:CIDDHSupplyChainTradeTransactionType <b>The trade line items, trade agreement, trade delivery and trade settlement details included in this Cross Industry Delivering Despatch Advice Header (CIDDH).</b>
— ApplicableCIDDHSupplyChainTradeAgreement	1..1	ram:CIDDHSupplyChainTradeAgreementType <b>The supply chain trade agreement applicable to this CIDDH supply chain trade transaction.</b>
— SellerCITradeParty	0..1	ram:CITradePartyType <b>The trade party that issues this CIDDH exchanged document.</b>
— ID	0..unbounded	udt:IDType <b>Identification of a party by use of a code other than the Global Location Number.</b> <b>A unique identifier of this CI trade party.</b>
— GlobalID	0..1	qdt:GLNIDType length 13 .. 13 <b>The Global Location Number (GLN) is the GS1 identification key of a physical location, legal or functional entity within an enterprise.</b> <b>A globally unique identifier of this CI trade party.</b>
— Name	0..1	udt:TextType <b>The name, expressed as text, for this CI trade party.</b>
— SpecifiedCILegalOrganization	0..1	ram:CILegalOrganizationType <b>The legally constituted organization specified for this CI trade party.</b>
— LegalClassificationCode	0..1	udt:CodeType <b>The code specifying the legal classification of this CI organization, such as Incorporated (Inc), Limited Liability Corporation (LLC) or non-profit.</b>
— Name	0..1	udt:TextType <b>The name, expressed as text, of this CI legal organization.</b>
— ID	0..1	udt:IDType <b>The unique identifier for this CI legal organization.</b>
— PostalCITradeAddress	0..1	ram:CITradeAddressType <b>The postal address for this CI legal organization.</b>
— PostcodeCode	0..1	udt:CodeType <b>The postcode of this CI trade address.</b>
— PostOfficeBox	0..1	udt:TextType <b>The identifier, expressed as text, of a post office box for this CI trade address.</b>
— LineOne	0..1	udt:TextType <b>The first free form line, expressed as text, of this CI trade address.</b>
— LineTwo	0..1	udt:TextType <b>The second free form line, expressed as text, of this CI trade address.</b>
— CityName	0..1	udt:TextType

Element/Attribute			Annotation
			The name, expressed as text, of the city, town or village of this CI trade address.
CountryID	0..1	udt:IDType	The unique identifier of the country for this CI trade address.
CountrySubDivisionID	0..1	udt:IDType	The unique identifier of the sub-division of the country for this CI trade address.
AuthorizedCILEgalRegistration	0..unbounded	ram:CILEgalRegistrationType	A legal registration authorized for this CI legal organization.
TypeCode	0..1	udt:CodeType	The code specifying the type of this CI legal registration.
ID	0..1	udt:IDType	The unique identifier for this CI legal registration.
DefinedCITradeContact	0..unbounded	ram:CITradeContactType	A trade contact defined for this CI trade party.
PersonName	0..1	udt:TextType	The name, expressed as text, of this CI trade contact person.
DepartmentName	0..1	udt:TextType	The name, expressed as text, of the department which is this CI trade contact.
TypeCode	0..1	udt:CodeType	The code specifying the type of CI trade contact.
TelephoneCIUniversalCommunication	0..1	ram:CIUniversalCommunicationType	The telephone communication information for this CI trade contact.
URIID	0..1	udt:IDType	The Uniform Resource Identifier (URI), such as a web or an email address, for this CI universal communication.
ChannelCode	0..1	udt:CodeType	The code specifying the channel or manner in which a CI universal communication can be made, such as telephone or email.
CompleteNumber	0..1	udt:TextType	The text string of characters that make up the complete number for this CI universal communication.
FaxCIUniversalCommunication	0..1	ram:CIUniversalCommunicationType	The fax communication information for this CI trade contact.
URIID	0..1	udt:IDType	The Uniform Resource Identifier (URI), such as a web or an email address, for this CI universal communication.
ChannelCode	0..1	udt:CodeType	The code specifying the channel or manner in which a CI universal communication can be made, such as telephone or email.
CompleteNumber	0..1	udt:TextType	The text string of characters that make up the complete number for this CI universal communication.
EmailURICIUniversalCommunication	0..1	ram:CIUniversalCommunicationType	The email URI communication information for this CI trade contact.
URIID	0..1	udt:IDType	The Uniform Resource Identifier (URI), such as a web

Element/Attribute			Annotation
			or an email address, for this CI universal communication.
ChannelCode	0..1	udt:CodeType	The code specifying the channel or manner in which a CI universal communication can be made, such as telephone or email.
CompleteNumber	0..1	udt:TextType	The text string of characters that make up the complete number for this CI universal communication.
PostalCITradeAddress	0..1	ram:CITradeAddressType	The postal address for this CI trade party.
PostcodeCode	0..1	udt:CodeType	The postcode of this CI trade address.
PostOfficeBox	0..1	udt:TextType	The identifier, expressed as text, of a post office box for this CI trade address.
LineOne	0..1	udt:TextType	The first free form line, expressed as text, of this CI trade address.
LineTwo	0..1	udt:TextType	The second free form line, expressed as text, of this CI trade address.
CityName	0..1	udt:TextType	The name, expressed as text, of the city, town or village of this CI trade address.
CountryID	0..1	udt:IDType	The unique identifier of the country for this CI trade address.
CountrySubDivisionID	0..1	udt:IDType	The unique identifier of the sub-division of the country for this CI trade address.
BuyerCITradeParty	0..1	ram:CITradePartyType	The party that is the buyer for this CIDDH supply chain trade agreement.
ID	0..unbounded	udt:IDType	Identification of a party by use of a code other than the Global Location Number. A unique identifier of this CI trade party.
GlobalID	0..1	qdt:GLNIDType length 13 .. 13	The Global Location Number (GLN) is the GS1 identification key of a physical location, legal or functional entity within an enterprise. A globally unique identifier of this CI trade party.
Name	0..1	udt:TextType	The name, expressed as text, for this CI trade party.
SpecifiedCILegalOrganization	0..1	ram:CILegalOrganizationType	The legally constituted organization specified for this CI trade party.
LegalClassificationCode	0..1	udt:CodeType	The code specifying the legal classification of this CI organization, such as Incorporated (Inc), Limited Liability Corporation (LLC) or non-profit.
Name	0..1	udt:TextType	The name, expressed as text, of this CI legal organization.
ID	0..1	udt:IDType	The unique identifier for this CI legal organization.
PostalCITradeAddress	0..1	ram:CITradeAddressType	

Element/Attribute			Annotation
—	PostcodeCode	0..1	The postal address for this CI legal organization.
			udt:CodeType
—	PostOfficeBox	0..1	The postcode of this CI trade address.
			udt:TextType
—	LineOne	0..1	The identifier, expressed as text, of a post office box for this CI trade address.
			udt:TextType
—	LineTwo	0..1	The first free form line, expressed as text, of this CI trade address.
			udt:TextType
—	CityName	0..1	The second free form line, expressed as text, of this CI trade address.
			udt:TextType
—	CountryID	0..1	The name, expressed as text, of the city, town or village of this CI trade address.
			udt:TextType
—	CountrySubDivisionID	0..1	The unique identifier of the country for this CI trade address.
			udt:IDType
—	AuthorizedCILEgalRegistration	0..unbounded	The unique identifier of the sub-division of the country for this CI trade address.
			udt:IDType
—	TypeCode	0..1	A legal registration authorized for this CI legal organization.
			ram:CILEgalRegistrationType
—	ID	0..1	The code specifying the type of this CI legal registration.
			udt:CodeType
—	DefinedCITradeContact	0..unbounded	The unique identifier for this CI legal registration.
			udt:IDType
—	PersonName	0..1	A trade contact defined for this CI trade party.
			ram:CITradeContactType
—	DepartmentName	0..1	The name, expressed as text, of this CI trade contact person.
			udt:TextType
—	TypeCode	0..1	The name, expressed as text, of the department which is this CI trade contact.
			udt:TextType
—	TelephoneCIUniversalCommunication	0..1	The code specifying the type of CI trade contact.
			udt:CodeType
—	URIID	0..1	The telephone communication information for this CI trade contact.
			ram:CIUniversalCommunicationType
—	ChannelCode	0..1	The Uniform Resource Identifier (URI), such as a web or an email address, for this CI universal communication.
			udt:IDType
—	CompleteNumber	0..1	The code specifying the channel or manner in which a CI universal communication can be made, such as telephone or email.
			udt:CodeType
—	FaxCIUniversalCommunication	0..1	The text string of characters that make up the complete number for this CI universal communication.
			udt:TextType
—	URIID	0..1	The fax communication information for this CI trade contact.
			ram:CIUniversalCommunicationType
—	URIID	0..1	The Uniform Resource Identifier (URI), such as a web or an email address, for this CI universal
			udt:IDType

Element/Attribute			Annotation
	ChannelCode	0..1	communication.
			udt:CodeType
			The code specifying the channel or manner in which a CI universal communication can be made, such as telephone or email.
	CompleteNumber	0..1	udt:TextType
			The text string of characters that make up the complete number for this CI universal communication.
	EmailURICIUniversalCommunication	0..1	ram:CIUniversalCommunicationType
			The email URI communication information for this CI trade contact.
	URIID	0..1	udt:IDType
			The Uniform Resource Identifier (URI), such as a web or an email address, for this CI universal communication.
	ChannelCode	0..1	udt:CodeType
			The code specifying the channel or manner in which a CI universal communication can be made, such as telephone or email.
	CompleteNumber	0..1	udt:TextType
			The text string of characters that make up the complete number for this CI universal communication.
	PostalCITradeAddress	0..1	ram:CITradeAddressType
			The postal address for this CI trade party.
	PostcodeCode	0..1	udt:CodeType
			The postcode of this CI trade address.
	PostOfficeBox	0..1	udt:TextType
			The identifier, expressed as text, of a post office box for this CI trade address.
	LineOne	0..1	udt:TextType
			The first free form line, expressed as text, of this CI trade address.
	LineTwo	0..1	udt:TextType
			The second free form line, expressed as text, of this CI trade address.
	CityName	0..1	udt:TextType
			The name, expressed as text, of the city, town or village of this CI trade address.
	CountryID	0..1	udt:IDType
			The unique identifier of the country for this CI trade address.
	CountrySubDivisionID	0..1	udt:IDType
			The unique identifier of the sub-division of the country for this CI trade address.
	ApplicableCITradeDeliveryTerms	0..1	ram:CITradeDeliveryTermsType
			The terms of delivery applicable to this CIDDH supply chain trade agreement.
	DeliveryTypeCode	0..1	qdt:DeliveryTermsCodeType
			The code specifying the type of delivery for these CI trade delivery terms, such as an INCOTERMS code.
	BuyerOrderReferencedCIReferencedDocument	0..1	ram:CIReferencedDocumentType
			The buyer order document referenced from this CIDDH supply chain trade agreement.
	IssuerAssignedID	0..1	udt:IDType
			The issuer assigned identifier for this CI referenced document.
	IssueDateTime	0..1	qdt:DateMandatoryDateTimeType
			The date or date time for the issuance of this CI

Element/Attribute			Annotation
LineID	0..1		referenced document.
			udt:IDType The unique identifier of a line in this CI referenced document.
ReferenceTypeCode	0..1		qdt:ReferenceCodeType The code specifying the reference type of this CI referenced document.
IssuerCITradeParty	0..1		ram:CITradePartyType The trade party that issued this CI referenced document.
ID	0..unbounded		udt:IDType Identification of a party by use of a code other than the Global Location Number. A unique identifier of this CI trade party.
GlobalID	0..1		qdt:GLNIDType length 13 .. 13 The Global Location Number (GLN) is the GS1 identification key of a physical location, legal or functional entity within an enterprise. A globally unique identifier of this CI trade party.
ContractReferencedCIReferencedDocument	0..unbounded		ram:CITReferencedDocumentType A contract document referenced from this CIDDH supply chain trade agreement.
IssuerAssignedID	0..1		udt:IDType The issuer assigned identifier for this CI referenced document.
IssueDateTime	0..1		qdt:DateMandatoryDateTimeType The date or date time for the issuance of this CI referenced document.
LineID	0..1		udt:IDType The unique identifier of a line in this CI referenced document.
ReferenceTypeCode	0..1		qdt:ReferenceCodeType The code specifying the reference type of this CI referenced document.
IssuerCITradeParty	0..1		ram:CITradePartyType The trade party that issued this CI referenced document.
ID	0..unbounded		udt:IDType Identification of a party by use of a code other than the Global Location Number. A unique identifier of this CI trade party.
GlobalID	0..1		qdt:GLNIDType length 13 .. 13 The Global Location Number (GLN) is the GS1 identification key of a physical location, legal or functional entity within an enterprise. A globally unique identifier of this CI trade party.
AdditionalReferencedCIReferencedDocument	0..unbounded		ram:CITReferencedDocumentType An additional document referenced from this CIDDH supply chain trade agreement.
IssuerAssignedID	0..1		udt:IDType The issuer assigned identifier for this CI referenced document.
IssueDateTime	0..1		qdt:DateMandatoryDateTimeType The date or date time for the issuance of this CI referenced document.
LineID	0..1		udt:IDType

Element/Attribute			Annotation
			The unique identifier of a line in this CI referenced document.
ReferenceTypeCode	0..1	qdt:ReferenceCodeType	The code specifying the reference type of this CI referenced document.
IssuerCITradeParty	0..1	ram:CITradePartyType	The trade party that issued this CI referenced document.
ID	0..unbounded	udt:IDType	Identification of a party by use of a code other than the Global Location Number. A unique identifier of this CI trade party.
GlobalID	0..1	qdt:GLNIDType length 13 .. 13	The Global Location Number (GLN) is the GS1 identification key of a physical location, legal or functional entity within an enterprise. A globally unique identifier of this CI trade party.
Name	0..1	udt:TextType	The name, expressed as text, for this CI trade party.
SpecifiedCILegalOrganization	0..1	ram:CILegalOrganizationType	The legally constituted organization specified for this CI trade party.
LegalClassificationCode	0..1	udt:CodeType	The code specifying the legal classification of this CI organization, such as Incorporated (Inc), Limited Liability Corporation (LLC) or non-profit.
Name	0..1	udt:TextType	The name, expressed as text, of this CI legal organization.
ID	0..1	udt:IDType	The unique identifier for this CI legal organization.
PostalCITradeAddress	0..1	ram:CITradeAddressType	The postal address for this CI legal organization.
PostcodeCode	0..1	udt:CodeType	The postcode of this CI trade address.
PostOfficeBox	0..1	udt:TextType	The identifier, expressed as text, of a post office box for this CI trade address.
LineOne	0..1	udt:TextType	The first free form line, expressed as text, of this CI trade address.
LineTwo	0..1	udt:TextType	The second free form line, expressed as text, of this CI trade address.
CityName	0..1	udt:TextType	The name, expressed as text, of the city, town or village of this CI trade address.
CountryID	0..1	udt:IDType	The unique identifier of the country for this CI trade address.
CountrySubDivisionID	0..1	udt:IDType	The unique identifier of the sub-division of the country for this CI trade address.
AuthorizedCILegalRegistration	0..unbounded	ram:CILegalRegistrationType	A legal registration authorized for this CI legal organization.
TypeCode	0..1	udt:CodeType	The code specifying the type of this CI legal

Element/Attribute			Annotation
			<b>registration.</b>
	— ID	0..1	udt:IDType <b>The unique identifier for this CI legal registration.</b>
	DefinedCITradeContact	0..unbounded	ram:CITradeContactType <b>A trade contact defined for this CI trade party.</b>
	— PersonName	0..1	udt:TextType <b>The name, expressed as text, of this CI trade contact person.</b>
	— DepartmentName	0..1	udt:TextType <b>The name, expressed as text, of the department which is this CI trade contact.</b>
	— TypeCode	0..1	udt:CodeType <b>The code specifying the type of CI trade contact.</b>
	— TelephoneCIUniversalCommunication	0..1	ram:CIUniversalCommunicationType <b>The telephone communication information for this CI trade contact.</b>
	— URIID	0..1	udt:IDType <b>The Uniform Resource Identifier (URI), such as a web or an email address, for this CI universal communication.</b>
	— ChannelCode	0..1	udt:CodeType <b>The code specifying the channel or manner in which a CI universal communication can be made, such as telephone or email.</b>
	— CompleteNumber	0..1	udt:TextType <b>The text string of characters that make up the complete number for this CI universal communication.</b>
	— FaxCIUniversalCommunication	0..1	ram:CIUniversalCommunicationType <b>The fax communication information for this CI trade contact.</b>
	— URIID	0..1	udt:IDType <b>The Uniform Resource Identifier (URI), such as a web or an email address, for this CI universal communication.</b>
	— ChannelCode	0..1	udt:CodeType <b>The code specifying the channel or manner in which a CI universal communication can be made, such as telephone or email.</b>
	— CompleteNumber	0..1	udt:TextType <b>The text string of characters that make up the complete number for this CI universal communication.</b>
	— EmailURICIUniversalCommunication	0..1	ram:CIUniversalCommunicationType <b>The email URI communication information for this CI trade contact.</b>
	— URIID	0..1	udt:IDType <b>The Uniform Resource Identifier (URI), such as a web or an email address, for this CI universal communication.</b>
	— ChannelCode	0..1	udt:CodeType <b>The code specifying the channel or manner in which a CI universal communication can be made, such as telephone or email.</b>
	— CompleteNumber	0..1	udt:TextType <b>The text string of characters that make up the complete number for this CI universal communication.</b>
	— PostalCITradeAddress	0..1	ram:CITradeAddressType <b>The postal address for this CI trade party.</b>
	— PostcodeCode	0..1	udt:CodeType <b>The postcode of this CI trade address.</b>



Element/Attribute			Annotation
	PostOfficeBox	0..1	udt:TextType The identifier, expressed as text, of a post office box for this CI trade address.
	LineOne	0..1	udt:TextType The first free form line, expressed as text, of this CI trade address.
	LineTwo	0..1	udt:TextType The second free form line, expressed as text, of this CI trade address.
	CityName	0..1	udt:TextType The name, expressed as text, of the city, town or village of this CI trade address.
	CountryID	0..1	udt:IDType The unique identifier of the country for this CI trade address.
	CountrySubDivisionID	0..1	udt:IDType The unique identifier of the sub-division of the country for this CI trade address.
	ApplicableCIDDHSupplyChainTradeDelivery	1..1	ram:CIDDHSupplyChainTradeDeliveryType The supply chain trade delivery applicable to this CIDDH supply chain trade transaction.
	ShipToCITradeParty	0..1	ram:CITradePartyType The ship to party for this CIDDH supply chain trade delivery.
	ID	0..unbounded	udt:IDType Identification of a party by use of a code other than the Global Location Number. A unique identifier of this CI trade party.
	GlobalID	0..1	qdt:GLNIDType length 13 .. 13 The Global Location Number (GLN) is the GS1 identification key of a physical location, legal or functional entity within an enterprise. A globally unique identifier of this CI trade party.
	Name	0..1	udt:TextType The name, expressed as text, for this CI trade party.
	PostalCITradeAddress	0..1	ram:CITradeAddressType The postal address for this CI trade party.
	PostcodeCode	0..1	udt:CodeType The postcode of this CI trade address.
	PostOfficeBox	0..1	udt:TextType The identifier, expressed as text, of a post office box for this CI trade address.
	LineOne	0..1	udt:TextType The first free form line, expressed as text, of this CI trade address.
	LineTwo	0..1	udt:TextType The second free form line, expressed as text, of this CI trade address.
	CityName	0..1	udt:TextType The name, expressed as text, of the city, town or village of this CI trade address.
	CountryID	0..1	udt:IDType The unique identifier of the country for this CI trade address.
	CountrySubDivisionID	0..1	udt:IDType The unique identifier of the sub-division of the country for this CI trade address.

Element/Attribute		Annotation
ShipFromCITradeParty	0..1	ram:CITradePartyType The ship from party for this CIDDH supply chain trade delivery.
ID	0..unbounded	udt:IDType Identification of a party by use of a code other than the Global Location Number. A unique identifier of this CI trade party.
GlobalID	0..1	qdt:GLNIDType length 13 .. 13 The Global Location Number (GLN) is the GS1 identification key of a physical location, legal or functional entity within an enterprise. A globally unique identifier of this CI trade party.
RelatedCISupplyChainConsignment	0..unbounded	ram:CISupplyChainConsignmentType A consignment related to this CIDDH supply chain trade delivery.
SpecifiedCILogisticsTransportMovement	0..unbounded	ram:CILogisticsTransportMovementType A logistics transport movement specified for this CI supply chain consignment.
ModeCode	0..1	qdt:TransportModeCodeType The code specifying the mode, such as by air, sea, rail, road or inland waterway, for this CI logistics transport movement.
UsedCILogisticsTransportMeans	0..1	ram:CILogisticsTransportMeansType The means of transport used for this CI logistics transport movement.
TypeCode	0..1	qdt:TransportMeansTypeCodeType The code specifying the type of CI logistics means of transport (Reference UNECE Recommendation 28).
ID	0..1	udt:IDType The unique identifier of this CI logistics means of transport, such as the International Maritime Organization number of a vessel.
CarrierCITradeParty	0..1	ram:CITradePartyType The carrier party for this CI supply chain consignment.
ID	0..unbounded	udt:IDType Identification of a party by use of a code other than the Global Location Number. A unique identifier of this CI trade party.
GlobalID	0..1	qdt:GLNIDType length 13 .. 13 The Global Location Number (GLN) is the GS1 identification key of a physical location, legal or functional entity within an enterprise. A globally unique identifier of this CI trade party.
IncludedCISupplyChainPackaging	0..unbounded	ram:CISupplyChainPackagingType Cross Industry (CI) packaging included in this CIDDH supply chain trade delivery.
TypeCode	0..1	qdt:PackageTypeCodeType The code specifying the type of CI supply chain packaging.
ActualDespatchCISupplyChainEvent	0..1	ram:CISupplyChainEventType The actual despatch event for this CIDDH supply chain trade delivery.
OccurrenceDateTime	0..1	udt:DateTimeType The date, time, date time, or other date time value of an occurrence of this CI supply chain event.
ConfirmedReleaseCISupplyChainEvent	0..1	ram:CISupplyChainEventType The confirmed release event for this CIDDH supply chain trade delivery.

Element/Attribute			Annotation
OccurrenceDateTime	0..1	udt:DateTimeType	The date, time, date time, or other date time value of an occurrence of this CI supply chain event.
PlannedDeliveryCISupplyChainEvent	0..1	ram:CISupplyChainEventType	The planned delivery event for this CIDDH supply chain trade delivery.
OccurrenceDateTime	0..1	udt:DateTimeType	The date, time, date time, or other date time value of an occurrence of this CI supply chain event.
TypeCode	0..1	udt:CodeType	The code specifying the type of CI supply chain event.
OccurrenceCISpecifiedPeriod	0..1	ram:CISpecifiedPeriodType	The specified period of time during which this CI supply chain event occurs.
StartDateTime	0..1	udt:DateTimeType	The date, time, date time or other date time value for the start of this CI specified period of time.
EndDateTime	0..1	udt:DateTimeType	The date, time, date time or other date time value for the end of this CI specified period of time.
OccurrenceCILogisticsLocation	0..1	ram:CILogisticsLocationType	The logistics location where this CI supply chain event occurs.
ID	0..1	udt:IDType	The unique identifier for this CI logistics related location, such as a United Nations Location Code (UNLOCODE) or GS1 Global Location Number (GLN).
TypeCode	0..1	udt:CodeType	The code specifying the type of this CI logistics related location.
Description	0..unbounded	udt:TextType	A textual description of this CI logistics related location.
PostalCITradeAddress	0..1	ram:CITradeAddressType	The postal trade address information for this CI logistics related location.
PostcodeCode	0..1	udt:CodeType	The postcode of this CI trade address.
PostOfficeBox	0..1	udt:TextType	The identifier, expressed as text, of a post office box for this CI trade address.
LineOne	0..1	udt:TextType	The first free form line, expressed as text, of this CI trade address.
LineTwo	0..1	udt:TextType	The second free form line, expressed as text, of this CI trade address.
CityName	0..1	udt:TextType	The name, expressed as text, of the city, town or village of this CI trade address.
CountryID	0..1	udt:IDType	The unique identifier of the country for this CI trade address.
CountrySubDivisionID	0..1	udt:IDType	The unique identifier of the sub-division of the country for this CI trade address.
ActualLoadingCISupplyChainEvent	0..1	ram:CISupplyChainEventType	The actual loading event for this CIDDH supply chain trade delivery.

Element/Attribute		Annotation
OccurrenceDateTime	0..1	udt:DateTimeType The date, time, date time, or other date time value of an occurrence of this CI supply chain event.
AdditionalReferencedCIReferencedDocument	0..unbounded	ram:CIReferencedDocumentType An additional document referenced from this CIDDH supply chain trade delivery.
IssuerAssignedID	0..1	udt:IDType The issuer assigned identifier for this CI referenced document.
IssueDateTime	0..1	qdt:DateMandatoryDateTimeType The date or date time for the issuance of this CI referenced document.
LineID	0..1	udt:IDType The unique identifier of a line in this CI referenced document.
ReferenceTypeCode	0..1	qdt:ReferenceCodeType The code specifying the reference type of this CI referenced document.
IssuerCITradeParty	0..1	ram:CITradePartyType The trade party that issued this CI referenced document.
ID	0..unbounded	udt:IDType Identification of a party by use of a code other than the Global Location Number. A unique identifier of this CI trade party.
GlobalID	0..1	qdt:GLNIDType length 13 .. 13 The Global Location Number (GLN) is the GS1 identification key of a physical location, legal or functional entity within an enterprise. A globally unique identifier of this CI trade party.
Name	0..1	udt:TextType The name, expressed as text, for this CI trade party.
SpecifiedCILegalOrganization	0..1	ram:CILegalOrganizationType The legally constituted organization specified for this CI trade party.
LegalClassificationCode	0..1	udt:CodeType The code specifying the legal classification of this CI organization, such as Incorporated (Inc), Limited Liability Corporation (LLC) or non-profit.
Name	0..1	udt:TextType The name, expressed as text, of this CI legal organization.
ID	0..1	udt:IDType The unique identifier for this CI legal organization.
PostalCITradeAddress	0..1	ram:CITradeAddressType The postal address for this CI legal organization.
PostcodeCode	0..1	udt:CodeType The postcode of this CI trade address.
PostOfficeBox	0..1	udt:TextType The identifier, expressed as text, of a post office box for this CI trade address.
LineOne	0..1	udt:TextType The first free form line, expressed as text, of this CI trade address.
LineTwo	0..1	udt:TextType The second free form line, expressed as text, of this CI trade address.

Element/Attribute			Annotation
	CityName	0..1	udt:TextType The name, expressed as text, of the city, town or village of this CI trade address.
	CountryID	0..1	udt:IDType The unique identifier of the country for this CI trade address.
	CountrySubDivisionID	0..1	udt:IDType The unique identifier of the sub-division of the country for this CI trade address.
	AuthorizedCILegalRegistration	0..unbounded	ram:CILegalRegistrationType A legal registration authorized for this CI legal organization.
	TypeCode	0..1	udt:CodeType The code specifying the type of this CI legal registration.
	ID	0..1	udt:IDType The unique identifier for this CI legal registration.
	DefinedCITradeContact	0..unbounded	ram:CITradeContactType A trade contact defined for this CI trade party.
	PersonName	0..1	udt:TextType The name, expressed as text, of this CI trade contact person.
	DepartmentName	0..1	udt:TextType The name, expressed as text, of the department which is this CI trade contact.
	TypeCode	0..1	udt:CodeType The code specifying the type of CI trade contact.
	TelephoneCIUniversalCommunication	0..1	ram:CIUniversalCommunicationType The telephone communication information for this CI trade contact.
	URIID	0..1	udt:IDType The Uniform Resource Identifier (URI), such as a web or an email address, for this CI universal communication.
	ChannelCode	0..1	udt:CodeType The code specifying the channel or manner in which a CI universal communication can be made, such as telephone or email.
	CompleteNumber	0..1	udt:TextType The text string of characters that make up the complete number for this CI universal communication.
	FaxCIUniversalCommunication	0..1	ram:CIUniversalCommunicationType The fax communication information for this CI trade contact.
	URIID	0..1	udt:IDType The Uniform Resource Identifier (URI), such as a web or an email address, for this CI universal communication.
	ChannelCode	0..1	udt:CodeType The code specifying the channel or manner in which a CI universal communication can be made, such as telephone or email.
	CompleteNumber	0..1	udt:TextType The text string of characters that make up the complete number for this CI universal communication.
	EmailURICIUniversalCommunication	0..1	ram:CIUniversalCommunicationType The email URI communication information for this CI trade contact.
	URIID	0..1	udt:IDType

Element/Attribute			Annotation
			The Uniform Resource Identifier (URI), such as a web or an email address, for this CI universal communication.
	ChannelCode	0..1	udt:CodeType The code specifying the channel or manner in which a CI universal communication can be made, such as telephone or email.
	CompleteNumber	0..1	udt:TextType The text string of characters that make up the complete number for this CI universal communication.
	PostalCITradeAddress	0..1	ram:CITradeAddressType The postal address for this CI trade party.
	PostcodeCode	0..1	udt:CodeType The postcode of this CI trade address.
	PostOfficeBox	0..1	udt:TextType The identifier, expressed as text, of a post office box for this CI trade address.
	LineOne	0..1	udt:TextType The first free form line, expressed as text, of this CI trade address.
	LineTwo	0..1	udt:TextType The second free form line, expressed as text, of this CI trade address.
	CityName	0..1	udt:TextType The name, expressed as text, of the city, town or village of this CI trade address.
	CountryID	0..1	udt:IDType The unique identifier of the country for this CI trade address.
	CountrySubDivisionID	0..1	udt:IDType The unique identifier of the sub-division of the country for this CI trade address.
	IncludedCIDDLSupplyChainTradeLineItem	0..unbounded	ram:CIDDLSupplyChainTradeLineItemType A Cross Industry Delivery Despatch Advice Line (CDDL) supply chain trade line item included in this CIDDH supply chain trade transaction.
	AssociatedCDDLDocumentLineDocument	1..1	ram:CDDLDocumentLineDocumentType The document line associated with this CDDL supply chain trade line item.
	LineID	1..1	udt:IDType The identifier of this CDDL document line.
	IncludedCINote	0..unbounded	ram:CINoteType A note included in this CDDL document line.
	Subject	0..1	udt:TextType The subject, expressed as text, of this CI note.
	Content	0..unbounded	udt:TextType Content, expressed as text, of this CI note.
	SubjectCode	0..1	udt:CodeType The code specifying the subject of this CI note.
	SpecifiedCIDDLSupplyChainTradeAgreement	0..1	ram:CIDDLSupplyChainTradeAgreementType The trade agreement specified for this CDDL supply chain trade line item.
	BuyerOrderReferencedCIReferencedDocument	0..1	ram:CIReferencedDocumentType The buyer order document referenced in this CDDL supply chain trade agreement.
	IssuerAssignedID	0..1	udt:IDType The issuer assigned identifier for this CI referenced

Element/Attribute			Annotation
			<b>document.</b>
IssueDateTime	0..1	qdt:DateMandatoryDateTimeType	The date or date time for the issuance of this CI referenced document.
LineID	0..1	udt:IDType	The unique identifier of a line in this CI referenced document.
ReferenceTypeCode	0..1	qdt:ReferenceCodeType	The code specifying the reference type of this CI referenced document.
IssuerCITradeParty	0..1	ram:CITradePartyType	The trade party that issued this CI referenced document.
ID	0..unbounded	udt:IDType	Identification of a party by use of a code other than the Global Location Number. A unique identifier of this CI trade party.
GlobalID	0..1	qdt:GLNIDType length 13 .. 13	The Global Location Number (GLN) is the GS1 identification key of a physical location, legal or functional entity within an enterprise. A globally unique identifier of this CI trade party.
PromotionalDealReferencedCISupplyChainDocument	0..1	ram:CISupplyChainDocumentType	The promotional deal document referenced in this CIDDL supply chain trade agreement.
IssuerAssignedID	0..1	udt:IDType	The issuer assigned identifier for this CI referenced document.
IssueDateTime	0..1	qdt:DateMandatoryDateTimeType	The date or date time for the issuance of this CI referenced document.
LineID	0..1	udt:IDType	The unique identifier of a line in this CI referenced document.
ReferenceTypeCode	0..1	qdt:ReferenceCodeType	The code specifying the reference type of this CI referenced document.
IssuerCITradeParty	0..1	ram:CITradePartyType	The trade party that issued this CI referenced document.
ID	0..unbounded	udt:IDType	Identification of a party by use of a code other than the Global Location Number. A unique identifier of this CI trade party.
GlobalID	0..1	qdt:GLNIDType length 13 .. 13	The Global Location Number (GLN) is the GS1 identification key of a physical location, legal or functional entity within an enterprise. A globally unique identifier of this CI trade party.
ContractReferencedCISupplyChainDocument	0..unbounded	ram:CISupplyChainDocumentType	A contract document referenced in this CIDDL supply chain trade agreement.
IssuerAssignedID	0..1	udt:IDType	The issuer assigned identifier for this CI referenced document.
IssueDateTime	0..1	qdt:DateMandatoryDateTimeType	



Element/Attribute			Annotation
			The date or date time for the issuance of this CI referenced document.
LineID	0..1	udt:IDType	The unique identifier of a line in this CI referenced document.
ReferenceTypeCode	0..1	qdt:ReferenceCodeType	The code specifying the reference type of this CI referenced document.
IssuerCITradeParty	0..1	ram:CITradePartyType	The trade party that issued this CI referenced document.
ID	0..unbounded	udt:IDType	Identification of a party by use of a code other than the Global Location Number. A unique identifier of this CI trade party.
GlobalID	0..1	qdt:GLNIDType length 13 .. 13	The Global Location Number (GLN) is the GS1 identification key of a physical location, legal or functional entity within an enterprise. A globally unique identifier of this CI trade party.
AdditionalReferencedCIReferencedDocument	0..unbounded	ram:CIReferencedDocumentType	An additional document referenced in this CIDDL supply chain trade agreement.
IssuerAssignedID	0..1	udt:IDType	The issuer assigned identifier for this CI referenced document.
IssueDateTime	0..1	qdt:DateMandatoryDateTimeType	The date or date time for the issuance of this CI referenced document.
LineID	0..1	udt:IDType	The unique identifier of a line in this CI referenced document.
ReferenceTypeCode	0..1	qdt:ReferenceCodeType	The code specifying the reference type of this CI referenced document.
IssuerCITradeParty	0..1	ram:CITradePartyType	The trade party that issued this CI referenced document.
ID	0..unbounded	udt:IDType	Identification of a party by use of a code other than the Global Location Number. A unique identifier of this CI trade party.
GlobalID	0..1	qdt:GLNIDType length 13 .. 13	The Global Location Number (GLN) is the GS1 identification key of a physical location, legal or functional entity within an enterprise. A globally unique identifier of this CI trade party.
SpecifiedCIDDLSupplyChainTradeDelivery	0..1	ram:CIDDLSupplyChainTradeDeliveryType	The trade delivery specified for this CIDDL supply chain trade item.
ChargeFreeQuantity	0..1	udt:QuantityType	The quantity free of charge in this CIDDL supply chain trade delivery.
ProductUnitQuantity	0..1	udt:QuantityType	The number of product units in this CIDDL supply chain trade delivery.
NetWeightMeasure	0..1	udt:MeasureType	



Element/Attribute			Annotation
			The measure of the net weight (mass) of this CIDDL supply chain trade delivery.
GrossWeightMeasure	0..1	udt:MeasureType	The measure of the gross weight (mass) of this CIDDL supply chain trade delivery.
SpecifiedCIDeliveryAdjustment	0..1	ram:CIDeliveryAdjustmentType	The delivery adjustment specified for this CIDDL supply chain trade delivery.
ReasonCode	0..1	udt:CodeType	The code specifying a reason for this CI delivery adjustment.
ActualQuantity	0..1	udt:QuantityType	The actual quantity added or subtracted as a result of this CI delivery adjustment.
IncludedCISupplyChainPackaging	0..unbounded	ram:CISupplyChainPackagingType	
TypeCode	0..1	qdt:PackageTypeCodeType	The code specifying the type of CI supply chain packaging.
SpecifiedCITradeProduct	0..1	ram:CITradeProductType	The trade product specified for this CIDDL supply chain trade line item.
ID	0..1	udt:IDType	The unique identifier for this CI trade product.
GlobalID	0..1	qdt:GTINIDType length 14 .. 14	The unique global identifier for this CI trade product. The GS1 Identification Key used to identify trade items. A trade item is any trade item (trade item or service) upon which there is a need to retrieve pre-defined information and that may be planned, priced, ordered, delivered and or invoiced at any point in any supply chain. The key is comprised of a GS1 Company Prefix, Item Reference, and Check Digit.
SellerAssignedID	0..1	udt:IDType	The unique seller assigned identifier for this CI trade product.
BuyerAssignedID	0..1	udt:IDType	The unique buyer assigned identifier for this CI trade product.
ManufacturerAssignedID	0..1	udt:IDType	The unique manufacturer assigned identifier for this CI trade product.
ApplicableCIMaterialGoodsCharacteristic	0..unbounded	ram:CIMaterialGoodsCharacteristicType	A material goods characteristic applicable to this CI trade product.
Description	0..unbounded	udt:TextType	A textual description of this CI material goods characteristic.
TypeCode	0..1	udt:CodeType	The code specifying the type of CI material goods characteristic.
ProportionalConstituentPercent	0..1	udt:PercentType	The percentage presence of the material within the goods for this CI material goods characteristic.
AbsolutePresenceWeightMeasure	0..1	udt:MeasureType	The weight measure of the absolute presence of this CI material goods characteristic.
AbsolutePresenceVolumeMeasure	0..1	udt:MeasureType	The volume measure of the absolute presence of this

Element/Attribute			Annotation
			<b>CI material goods characteristic.</b>
	<b>IndividualCITradeProductInstance</b>	<b>0..unbounded</b>	ram:CITradeProductInstanceType <b>An individual instance of this Cross Industry (CI) trade product.</b>
	– <b>BatchID</b>	<b>0..1</b>	udt:IDType <b>The unique batch identifier for this CI trade product instance.</b>
	– <b>BestBeforeDateTime</b>	<b>0..1</b>	udt:DateTimeType <b>The date, time, date time, or other date time value before which it is best to consume this CI trade product instance.</b>
	– <b>ExpiryDateTime</b>	<b>0..1</b>	udt:DateTimeType <b>The date, time, date time, or other date time value of expiry of this CI trade product instance.</b>
	– <b>SellByDateTime</b>	<b>0..1</b>	udt:DateTimeType <b>The date, time, date time, or other date time value after which this CI trade product instance should not be sold.</b>
	– <b>SerialID</b>	<b>0..unbounded</b>	udt:IDType <b>A serial identifier for this CI trade product instance.</b>
	<b>ProductCIProductCharacteristic</b>	<b>0..unbounded</b>	ram:CIProductCharacteristicType <b>A product characteristic for this CI trade product instance.</b>
	– <b>TypeCode</b>	<b>0..1</b>	udt:CodeType <b>The code specifying a type of CI product characteristic.</b>
	– <b>ValueMeasure</b>	<b>0..1</b>	udt:MeasureType <b>The measure of a value for this CI product characteristic.</b>
	<b>ProductionCISupplyChainEvent</b>	<b>0..1</b>	ram:CISupplyChainEventType <b>The production event for this CI trade product instance.</b>
	– <b>OccurrenceDateTime</b>	<b>0..1</b>	udt:DateTimeType <b>The date, time, date time, or other date time value of an occurrence of this CI supply chain event.</b>
	– <b>OccurrenceCILogisticsLocation</b>	<b>0..1</b>	ram:CILogisticsLocationType <b>The logistics location where this CI supply chain event occurs.</b>
	– <b>ID</b>	<b>0..1</b>	udt:IDType <b>The unique identifier for this CI logistics related location, such as a United Nations Location Code (UNLOCODE) or GS1 Global Location Number (GLN).</b>
	– <b>TypeCode</b>	<b>0..1</b>	udt:CodeType <b>The code specifying the type of this CI logistics related location.</b>
	– <b>Description</b>	<b>0..unbounded</b>	udt:TextType <b>A textual description of this CI logistics related location.</b>
	<b>PostalCITradeAddress</b>	<b>0..1</b>	ram:CITradeAddressType <b>The postal trade address information for this CI logistics related location.</b>
	– <b>PostcodeCode</b>	<b>0..1</b>	udt:CodeType <b>The postcode of this CI trade address.</b>
	– <b>PostOfficeBox</b>	<b>0..1</b>	udt:TextType <b>The identifier, expressed as text, of a post office box for this CI trade address.</b>
	– <b>LineOne</b>	<b>0..1</b>	udt:TextType <b>The first free form line, expressed as text, of this CI trade address.</b>

Element/Attribute			Annotation
	LineTwo	0..1	udt:TextType The second free form line, expressed as text, of this CI trade address.
	CityName	0..1	udt:TextType The name, expressed as text, of the city, town or village of this CI trade address.
	CountryID	0..1	udt:IDType The unique identifier of the country for this CI trade address.
	CountrySubDivisionID	0..1	udt:IDType The unique identifier of the sub-division of the country for this CI trade address.
	PackagingCISupplyChainEvent	0..1	ram:CISupplyChainEventType The packaging event for this CI trade product instance.
	OccurrenceDateTime	0..1	udt:DateTimeType The date, time, date time, or other date time value of an occurrence of this CI supply chain event.
	OccurrenceCISpecifiedPeriod	0..1	ram:CISpecifiedPeriodType The specified period of time during which this CI supply chain event occurs.
	StartDateTime	0..1	udt:DateTimeType The date, time, date time or other date time value for the start of this CI specified period of time.
	EndDateTime	0..1	udt:DateTimeType The date, time, date time or other date time value for the end of this CI specified period of time.
	OccurrenceCILogisticsLocation	0..1	ram:CILogisticsLocationType The logistics location where this CI supply chain event occurs.
	ID	0..1	udt:IDType The unique identifier for this CI logistics related location, such as a United Nations Location Code (UNLOCODE) or GS1 Global Location Number (GLN).
	TypeCode	0..1	udt:CodeType The code specifying the type of this CI logistics related location.
	Description	0..unbounded	udt:TextType A textual description of this CI logistics related location.
	PostalCITradeAddress	0..1	ram:CITradeAddressType The postal trade address information for this CI logistics related location.
	PostcodeCode	0..1	udt:CodeType The postcode of this CI trade address.
	PostOfficeBox	0..1	udt:TextType The identifier, expressed as text, of a post office box for this CI trade address.
	LineOne	0..1	udt:TextType The first free form line, expressed as text, of this CI trade address.
	LineTwo	0..1	udt:TextType The second free form line, expressed as text, of this CI trade address.
	CityName	0..1	udt:TextType The name, expressed as text, of the city, town or village of this CI trade address.
	CountryID	0..1	udt:IDType The unique identifier of the country for this CI trade

Element/Attribute			Annotation
	CountrySubDivisionID	0..1	address.
			udt:IDType The unique identifier of the sub-division of the country for this CI trade address.
	ApplicableCIMaterialGoodsCharacteristic	0..unbounded	ram:CIMaterialGoodsCharacteristicType A material characteristic applicable to this CI trade product instance.
	Description	0..unbounded	udt:TextType A textual description of this CI material goods characteristic.
	TypeCode	0..1	udt:CodeType The code specifying the type of CI material goods characteristic.
	ProportionalConstituentPercent	0..1	udt:PercentType The percentage presence of the material within the goods for this CI material goods characteristic.
	AbsolutePresenceWeightMeasure	0..1	udt:MeasureType The weight measure of the absolute presence of this CI material goods characteristic.
	AbsolutePresenceVolumeMeasure	0..1	udt:MeasureType The volume measure of the absolute presence of this CI material goods characteristic.
	CertificationEvidenceReferenceCIReferencedDocument	0..unbounded	ram:CIReferencedDocumentType A Cross Industry (CI) certification evidence document reference for this CI trade product.
	IssuerAssignedID	0..1	udt:IDType The issuer assigned identifier for this CI referenced document.
	IssueDateTime	0..1	qdt:DateMandatoryDateTimeType The date or date time for the issuance of this CI referenced document.
	LineID	0..1	udt:IDType The unique identifier of a line in this CI referenced document.
	ReferenceTypeCode	0..1	qdt:ReferenceCodeType The code specifying the reference type of this CI referenced document.
	IssuerCITradeParty	0..1	ram:CITradePartyType The trade party that issued this CI referenced document.
	ID	0..unbounded	udt:IDType Identification of a party by use of a code other than the Global Location Number. A unique identifier of this CI trade party.
	GlobalID	0..1	qdt:GLNIDType length 13 .. 13 The Global Location Number (GLN) is the GS1 identification key of a physical location, legal or functional entity within an enterprise. A globally unique identifier of this CI trade party.
	OriginCITradeCountry	0..1	ram:CITradeCountryType The country of origin for this Cross Industry (CI) trade product.
	ID	0..1	udt:IDType The unique identifier for this CI trade country.
	AdditionalReferenceCIReferencedDocument	0..unbounded	ram:CIReferencedDocumentType

Element/Attribute			Annotation
			An additional referenced document for this CI trade product, such as a manual or a certificate.
IssuerAssignedID	0..1	udt:IDType	The issuer assigned identifier for this CI referenced document.
IssueDateTime	0..1	qdt:DateMandatoryDateTimeType	The date or date time for the issuance of this CI referenced document.
LineID	0..1	udt:IDType	The unique identifier of a line in this CI referenced document.
ReferenceTypeCode	0..1	qdt:ReferenceCodeType	The code specifying the reference type of this CI referenced document.
IssuerCITradeParty	0..1	ram:CITradePartyType	The trade party that issued this CI referenced document.
ID	0..unbounded	udt:IDType	Identification of a party by use of a code other than the Global Location Number. A unique identifier of this CI trade party.
GlobalID	0..1	qdt:GLNIDType length 13 .. 13	The Global Location Number (GLN) is the GS1 identification key of a physical location, legal or functional entity within an enterprise. A globally unique identifier of this CI trade party.
SpecifiedCIDDLogisticsPackage	0..unbounded	ram:CIDDLogisticsPackageType	A Cross Industry Delivery Despatch Advice Line (CIDD) logistics package specified for this CIDDH supply chain trade transaction.
ID	0..1	udt:IDType	The identifier for this CIDD logistics package.
GlobalID	0..1	qdt:SSCCIDType	The GS1 identification key which identifies individual shipping containers or shipping packages. The global identifier for this CIDD logistics package.
ParentID	0..1	udt:IDType	The parent identifier for this CIDD logistics package.
TypeCode	0..1	qdt:PackageTypeCodeType	The code specifying the type of CIDD logistics package.
ItemQuantity	0..1	udt:QuantityType	The number of CIDD logistics packages.
GrossWeightMeasure	0..1	udt:MeasureType	The measure of the gross weight (mass) of this CIDD logistics package.
NetWeightMeasure	0..1	udt:MeasureType	The measure of the net weight (mass) of this CIDD logistics package.
GrossVolumeMeasure	0..1	udt:MeasureType	The measure of the gross volume of this CIDD logistics package.
IncludedCIDDSupplyChainTradeLineItem	0..unbounded	ram:CIDDSupplyChainTradeLineItemType	For the full structure of this element please refer to the IncludedCIDDSupplyChainTradeLineItem within SpecifiedCIDDHSupplyChainTradeTransaction, since this structure is identical.

Element/Attribute			Annotation
AssociatedCIDDLDocumentLineDocument	1..1		ram:CIDDLDocumentLineDocumentType The document line associated with this CIDDL supply chain trade line item.
LineID	1..1		udt:IDType The identifier of this CIDDL document line.
IncludedCINote	0..unbounded		ram:CINoteType A note included in this CIDDL document line.
Subject	0..1		udt:TextType The subject, expressed as text, of this CI note.
Content	0..unbounded		udt:TextType Content, expressed as text, of this CI note.
SubjectCode	0..1		udt:CodeType The code specifying the subject of this CI note.
UsedCISupplyChainPackaging	0..unbounded		ram:CISupplyChainPackagingType Cross Industry (CI) supply chain packaging used for this CIDDL logistics package.
TypeCode	0..1		qdt:PackageTypeCodeType The code specifying the type of CI supply chain packaging.
LinearCISpatialDimension	0..1		ram:CISpatialDimensionType The Cross Industry (CI) linear spatial dimensions of this CIDDL logistics package.
WidthMeasure	0..1		udt:MeasureType The measure of the width component of this CI spatial dimension.
LengthMeasure	0..1		udt:MeasureType The measure of the length component of this CI spatial dimension.
HeightMeasure	0..1		udt:MeasureType The measure of the height component of this CI spatial dimension.

## 6. Business Document Example

The following is an example of a despatch advice message. The message is sent out on July 31, 2007 11 AM. The message is identified with the unique identifier KC.

### Parties

- Material Supplier (Shipper and Content Owner 8812345678903)
- Manufacturer (Receiver 8712345678913)
- Manufacturer Ship To (8712345678921)

### Referenced Purchase Order

Purchase Order 933, from Manufacturer (8712345678913) Date 2004-04-12, Line Item 25

### Despatch Information

Actual Ship Date Time: July 4, 2007 300 PM

### Despatch Advice Logistic Line Item

Package Type: PE (Pallet, Modular)

Logistics Unit Identification SSCC 881234567000010112

### Despatch Advice Item Containment Line Item

Country of Origin: Costa Rica

Item GTIN: 08712345678906

Quantity: 700

### Delivery Note References

Referenced Date Time: April 24, 2007 T 900 AM

Referenced Identification: DN

Line Item Number: 1

## 7. Implementation Considerations

Not Applicable

## 8. Testing

### 8.1. Pass / Fail Criteria

Not Applicable

### 8.2. Test Data

- <rsm:CrossIndustryDespatchAdvice>
<rsm:SpecifiedCIExchangedDocumentContext />
- <rsm:HeaderCIDDHExchangedDocument>
<ram:ID>KC</ram:ID>
<ram:IssueDateTime>2010-07-31T11:00:00</ram:IssueDateTime>
- <ram:IssuerCITradeParty>
<ram:GlobalID schemeID="GLN">8812345678903</ram:GlobalID>
</ram:IssuerCITradeParty>
</rsm:HeaderCIDDHExchangedDocument>
- <rsm:SpecifiedCIDDHSupplyChainTradeTransaction>
- <ram:ApplicableCIDDHSupplyChainTradeAgreement>
- <ram:SellerCITradeParty>
<ram:GlobalID schemeID="GLN">8812345678903</ram:GlobalID>
</ram:SellerCITradeParty>
- <ram:BuyerCITradeParty>
<ram:GlobalID schemeID="GLN">8712345678913</ram:GlobalID>
</ram:BuyerCITradeParty>
- <ram:BuyerOrderReferencedCIReferencedDocument>
<ram:IssuerAssignedID>933</ram:IssuerAssignedID>
<ram:IssueDateTime>2010-04-12T00:00:00</ram:IssueDateTime>
<ram:LineID>25</ram:LineID>
- <ram:IssuerCITradeParty>
<ram:GlobalID schemeID="GLN">8712345678913</ram:GlobalID>
</ram:IssuerCITradeParty>
</ram:BuyerOrderReferencedCIReferencedDocument>
</ram:ApplicableCIDDHSupplyChainTradeAgreement>
- <ram:ApplicableCIDDHSupplyChainTradeDelivery>
- <ram:ShipToCITradeParty>
<ram:GlobalID schemeID="GLN">8712345678921</ram:GlobalID>
</ram:ShipToCITradeParty>



- <rsm:CrossIndustryDespatchAdvice>
- <ram:ActualDespatchCISupplyChainEvent>
<ram:OccurrenceDateTime>2010-07-04T15:00:00</ram:OccurrenceDateTime>
</ram:ActualDespatchCISupplyChainEvent>
</ram:ApplicableCIDDHSupplyChainTradeDelivery>
- <ram:SpecifiedCIDDLLogisticsPackage>
<ram:GlobalID schemeID="SSCC">881234567000010112</ram:GlobalID>
<ram:TypeCode>PE</ram:TypeCode>
- <ram:IncludedCIDDLSupplyChainTradeLineItem>
- <ram:AssociatedCIDDLDocumentLineDocument>
<ram:LineID>1</ram:LineID>
</ram:AssociatedCIDDLDocumentLineDocument>
- <ram:SpecifiedCIDDLSupplyChainTradeDelivery>
<ram:ProductUnitQuantity>700</ram:ProductUnitQuantity>
</ram:SpecifiedCIDDLSupplyChainTradeDelivery>
- <ram:SpecifiedCITradeProduct>
<ram:GlobalID schemeID="GTIN">08712345678906</ram:GlobalID>
</ram:SpecifiedCITradeProduct>
</ram:IncludedCIDDLSupplyChainTradeLineItem>
</ram:SpecifiedCIDDLLogisticsPackage>
</rsm:SpecifiedCIDDHSupplyChainTradeTransaction>
</rsm:CrossIndustryDespatchAdvice>

## 9. Appendices

Not Applicable

## 10. Summary of Changes

Change	BSD Version	Associated CR Number