



Warehouse Outbound Instruction and Notification

Business Message Standard (BMS)

Release 3.2

01-Dec-2014, Issue1



Document Summary

Document Item	Current Value
Document Title	Business Message Standard (BMS) - Warehouse Outbound Instruction and Notification
BMS Release	3.2
Document Version	Issue1, 01-Dec-2014
Work Group Name	eCom SMG
BMS Template Version	2.4

Work Request Reference

Date of WR Submission to GSMP:	WR Submitter(s):	Refer to Work Request (WR) Number(s):
09-Jul-2013	Philips Electronics N.V.	13-000106
07-May-2014	GS1 Germany	14-000074
25-Jun-2014	GS1 Global Office	14-000110

Business Requirements Document (BRAD) Reference

BRAD Title	BRAD Issue Date	BRAD Version
Warehousing Inbound and Outbound processes	25-Jul-2012	1.0

Document Change History

Date of Change	Version	Changed By	Reason for Change	Summary of Change
12-Jan-2012	BMS 3.0 – Issue 1	Mark Van Eeghem	BMS Release 3.0	See summary of changes
01-May-2013	BMS 3.1 – Issue 1	Coen Janssen	BMS Release 3.1	See summary of changes
01-Dec-2014	BMS 3.2 – Issue 1	Ewa Iwicka	BMS Release 3.2	See summary of changes

Disclaimer

WHILST EVERY EFFORT HAS BEEN MADE TO ENSURE THAT THE GUIDELINES TO USE THE GS1 STANDARDS CONTAINED IN THE DOCUMENT ARE CORRECT, GS1 AND ANY OTHER PARTY INVOLVED IN THE CREATION OF THE DOCUMENT HEREBY STATE THAT THE DOCUMENT IS PROVIDED WITHOUT WARRANTY, EITHER EXPRESSED OR IMPLIED, REGARDING ANY MATTER, INCLUDING BUT NOT LIMITED TO THE OF ACCURACY, MERCHANTABILITY OR FITNESS FOR A PARTICULAR PURPOSE, AND HEREBY DISCLAIM ANY AND ALL LIABILITY, DIRECT OR INDIRECT, FOR ANY DAMAGES OR LOSS RELATING TO OR RESULTING FROM THE USE OF THE DOCUMENT. THE DOCUMENT MAY BE MODIFIED, SUBJECT TO DEVELOPMENTS IN TECHNOLOGY, CHANGES TO THE STANDARDS, OR NEW LEGAL REQUIREMENTS. SEVERAL PRODUCTS AND COMPANY NAMES MENTIONED HEREIN MAY BE TRADEMARKS AND/OR REGISTERED TRADEMARKS OF THEIR RESPECTIVE COMPANIES. GS1 IS A REGISTERED TRADEMARK OF GS1 AISBL.

Table of Contents

1. Business Domain View	4
1.1. Introduction.....	4
1.2. References	4
2. Business Context	4
3. Business Transaction View	5
3.1. Business Transaction – Issue Outbound Instruction	5
3.2. Business Transaction – Issue Outbound Notification	6
4. Business Information View	8
4.1. Warehousing Outbound Instruction	8
4.2. Warehousing Outbound Instruction – Shipment	10
4.3. Warehousing Outbound Instruction – Shipment Item	12
4.4. Warehousing Outbound Notification	14
4.5. Warehousing Outbound Notification – Shipment	16
4.6. Warehousing Outbound Notification – Shipment Item	19
4.7. Warehousing Outbound Instruction - Data Types	21
4.8. Warehousing Outbound Notification - Data Types	22
4.9. Code Lists	23
5. Business Message Examples	23
5.1. Example 1	23
5.2. Example 2	24
5.3. Example 3	26
6. Implementation Considerations	28
6.1. User Guide	28
6.2. Message Specific Considerations	28
7. Summary of Changes	28
7.1. BMS Release 3.1	28
7.2. BMS Release 3.2	29
8. Appendices	31
9. Acknowledgements	31
9.1.1. Work Group	31
9.1.2. Development Team Members	32

1. Business Domain View

1.1. Introduction

Message Definition

Warehousing Outbound Instruction Message Definition

The Warehousing Outbound Instruction message enables a Logistic Services Client (LSC) to inform his Logistic Services Provider (LSP) that goods need to be shipped.

Warehousing Outbound Notification Message Definition

The Warehousing Outbound Notification message enables a Logistic Services Provider (LSP) to inform his Logistic Services Client (LSC) on the status of goods shipped on behalf of the client.

Principles

These messages support the warehouse outbound process.

1.2. References

[LIM] GS1 Logistics Interoperability Model, 1.0, GS1 2007

[BRAD_WIO] BRAD Warehousing Inbound and Outbound Processes, 1.0, GS1 2012

[BMS_Shared] BMS Shared Common Library, 3.2, GS1 2014

[BMS_eCom] BMS eCom Common Library, 3.2, GS1 2014

[BMS_Warehousing] BMS Warehousing Common Library, 3.2, GS1 2014

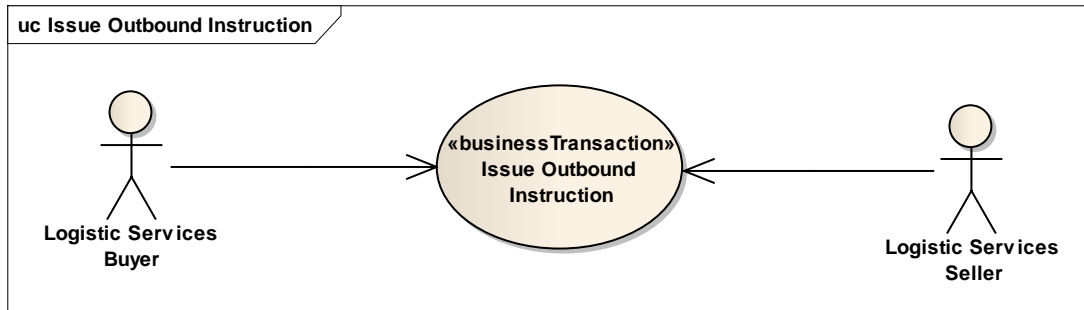
2. Business Context

Context Category	Value(s)
Industry	All
Geopolitical	All
Product	All
Process	Warehousing – Outbound Operations
System Capabilities	GS1 System
Official Constraints	None

3. Business Transaction View

3.1. Business Transaction – Issue Outbound Instruction

Use case diagram



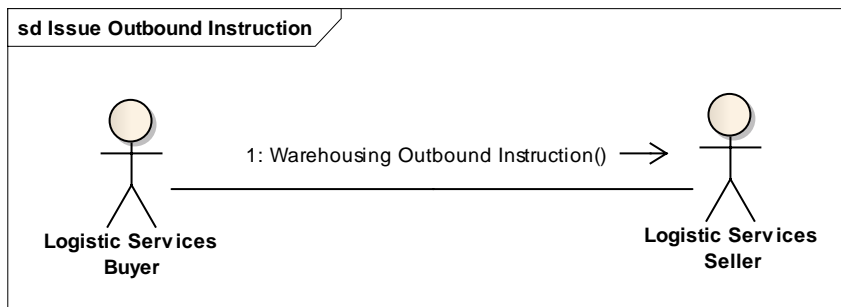
Use case description

Use Case Name	Issue Warehousing Outbound Instruction
Use Case Description	The Logistic Services Buyer (LSB) informs the Logistic Services Seller (LSS) that a shipment needs to be prepared.
Actors (Goal)	Logistic Services Buyer (LSB) Logistic Services Seller (LSS)
Performance Goals	Not applicable
Preconditions	Item master data of the goods to be shipped have been communicated to the Logistic Services Seller.
Post conditions	The Logistic Services Seller has been informed on the goods to be shipped.
Main Scenario	<ul style="list-style-type: none"> ■ LSB generates the Warehousing Outbound Instruction from his (enterprise resource planning) system. ■ LSB sends the Warehousing Outbound Instruction to the LSS. ■ LSS receives the Warehousing Outbound Instruction. ■ LSS processes the Warehousing Outbound Instruction in his (warehouse management) system.
Alternative Scenario(s)	<u><<scenario name>></u> steps
Related Requirements	
Related Rules	

Activity diagram

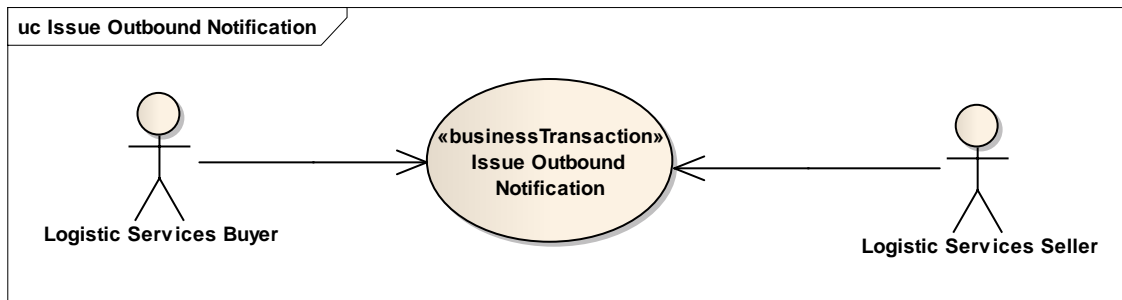
Not applicable

Communication diagram



3.2. Business Transaction – Issue Outbound Notification

Use case diagram

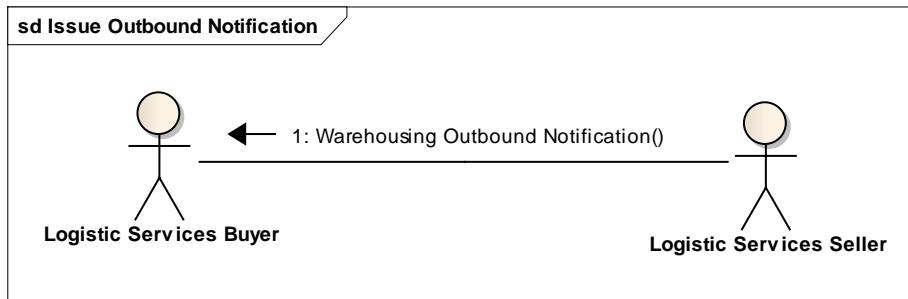


Use case description

Use Case Name	Issue Warehousing Outbound Notification
Use Case Description	The Logistic Services Seller (LSS) informs the Logistic Services Buyer (LSB) on the status of an outbound shipment that will be / has been prepared.
Actors (Goal)	Logistic Services Buyer (LSB) Logistic Services Seller (LSS)
Performance Goals	Not applicable
Preconditions	<ul style="list-style-type: none"> The Logistic Services Seller has been informed on the goods to be shipped.
Post conditions	The Logistic Services Buyer has been informed on the status of the outbound shipment.
Main Scenario	<ul style="list-style-type: none"> LSS generates the Warehousing Outbound Notification from his (warehouse management) system. LSS sends the Warehousing Outbound Notification to the LSB. LSB receives the Warehousing Outbound Notification. LSB processes the Warehousing Outbound Notification in his (enterprise resource planning) system.
Alternative Scenario(s)	Not applicable
Related Requirements	
Related Rules	

Activity diagram

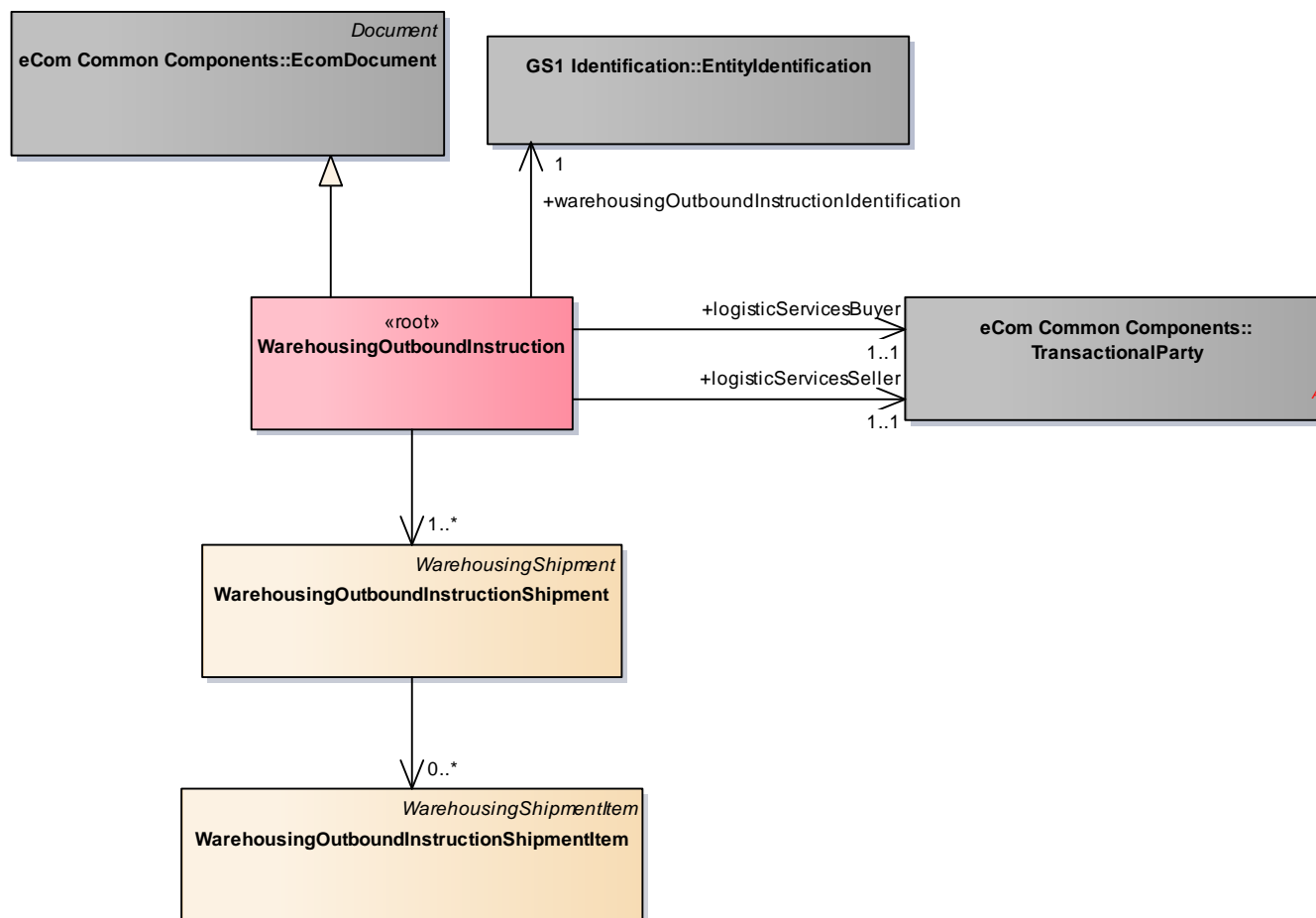
Not applicable

Communication diagram

4. Business Information View

4.1. Warehousing Outbound Instruction

Class Diagram



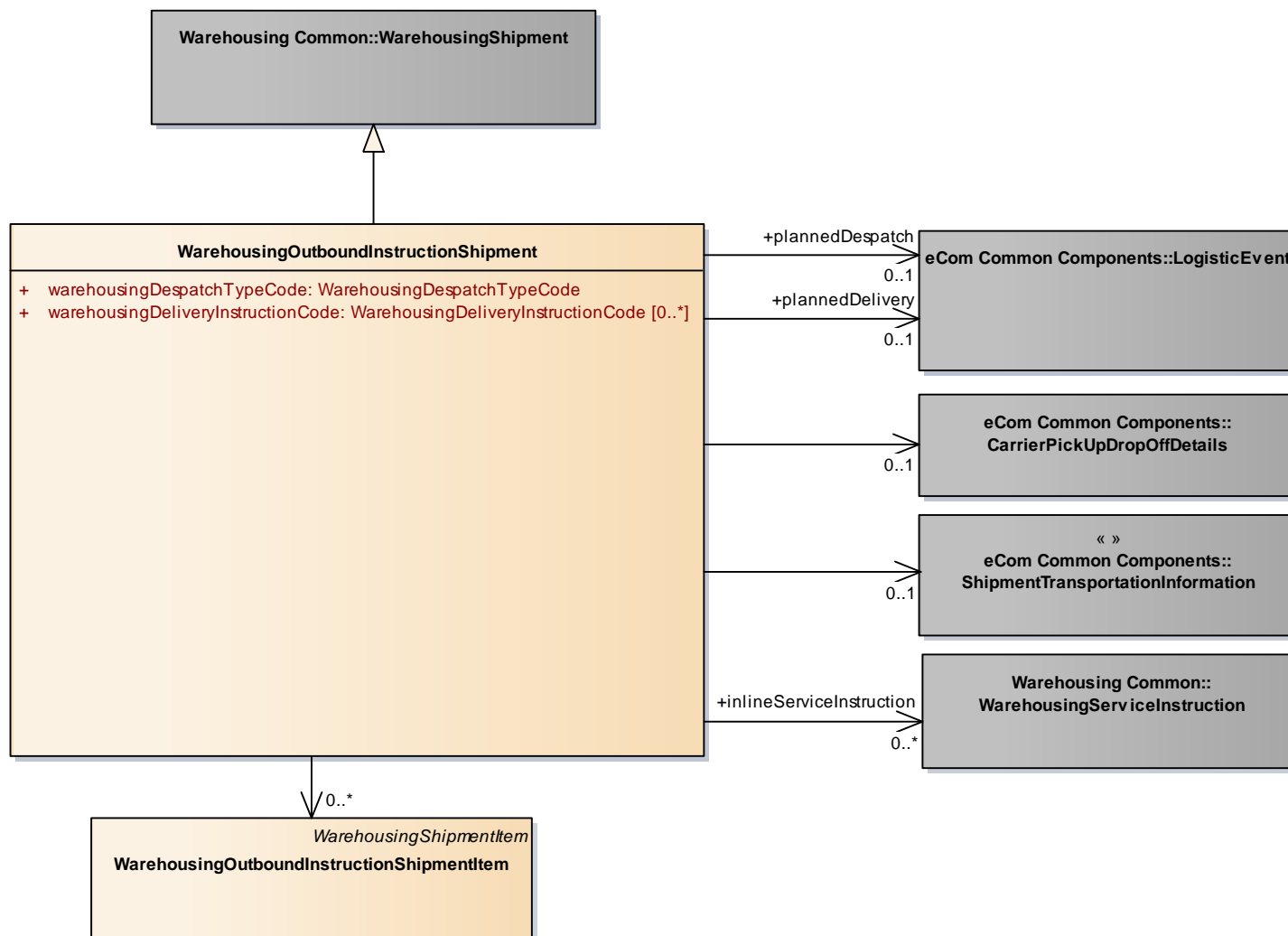
GDD Report

The content of the WarehousingOutboundInstruction class, its structure and component definitions can be accessed in the Global Data Dictionary: http://apps.gs1.org/GDD/bms/Version3_2/Pages/bieDetails.aspx?semanticURN=urn:gs1:gdd:bie:WarehousingOutboundInstruction

Content	Attribute / Role	Datatype /Secondary class	Multiplicity	Definition	Requirements
WarehousingOutboundInstruction				Message that supports the warehouse outbound process, and enables a Logistic Services Client (LSC) to inform his Logistic Services Provider (LSP) that goods need to be shipped.	
Association		WarehousingOutboundInstructionShipment	1..*	Information on the shipments that need to be prepared by the logistics services seller.	
Generalization		EcomDocument		Basic information about the content of the message including version number, creation date and time.	[brad-whiop:insdes-1]
Association	logisticServicesSeller	TransactionalParty	1..1	A party that provides logistics services to another party.	[brad-whiop:insdes-3]
Association	warehousingOutboundInstructionIdentification	EntityIdentification	1..1	The identification of the warehousing outbound instruction document.	[brad-whiop:insdes-1]
Association	logisticServicesBuyer	TransactionalParty	1..1	A party that purchases logistics services from another party.	[brad-whiop:insdes-2]

4.2. Warehousing Outbound Instruction – Shipment

Class Diagram



GDD Report

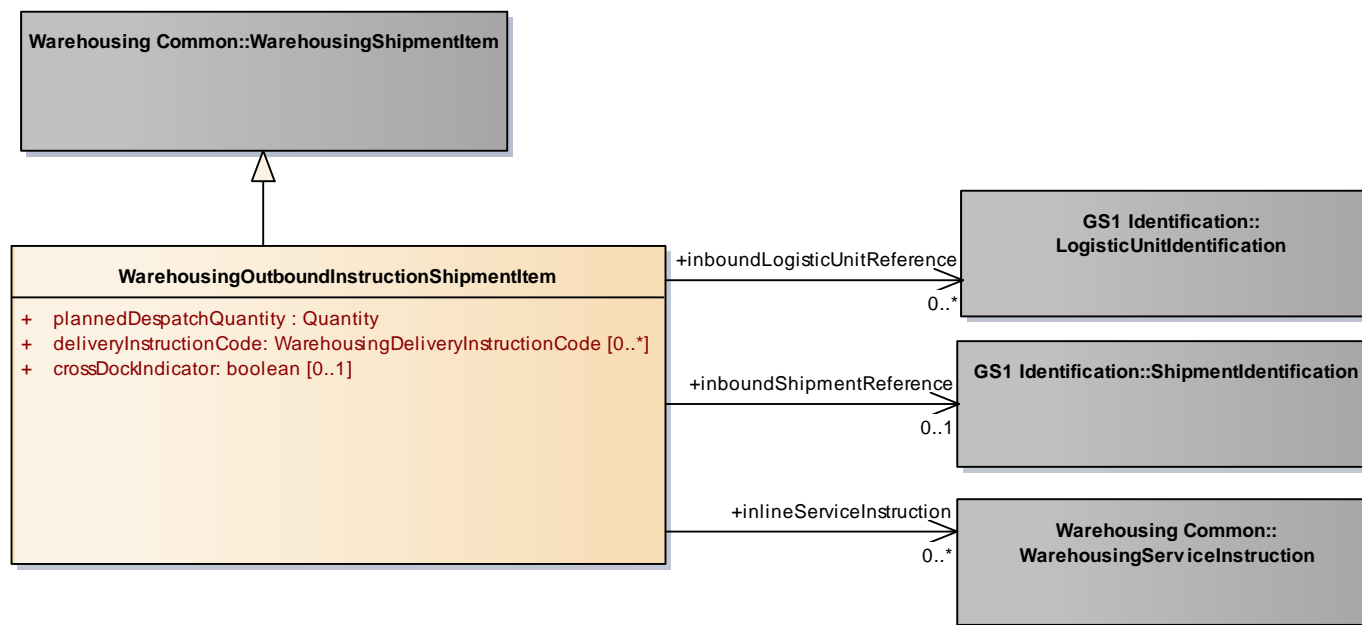
The content of the WarehousingOutboundInstructionShipment class, its structure and component definitions can be accessed in the Global Data Dictionary:

http://apps.gs1.org/GDD/bms/Version3_2/Pages/bieDetails.aspx?semanticURN=urn:gs1:gdd:bie:WarehousingOutboundInstructionShipment

Content	Attribute / Role	Datatype /Secondary class	Multiplicity	Definition	Requirements
WarehousingOutboundInstructionShipment				A shipment is an identifiable collection of one or more Trade Items available to be transported together from the shipper (Original Consignor/Shipper), to the receiver (Final/Ultimate Consignee).	[brad-whiop:insdes-4]
Association	plannedDelivery	LogisticEvent	0..1	Details on the date and time the goods need to be delivered.	[brad-whiop:insdes-4.1]
Association		CarrierPickUpDropOffDetails	0..1	Details on the carrier that will deliver the goods.	[brad-whiop:insdes-4.6]
Generalization		WarehousingShipment			
Association	plannedDespatch	LogisticEvent	0..1	Details on the date and time the goods need to be despatched.	[brad-whiop:insdes-4.2]
Association	inlineServiceInstruction	WarehousingServiceInstruction	0..*	Details on one or more services to be performed by the logistic services seller during outbound processing.	[brad-whiop:insdes-4.7]
Association		WarehousingOutboundInstructionShipmentItem	0..*	Details on the items that need to be shipped.	
Association		ShipmentTransportationInformation	0..1	Instructions on the way the shipment needs to be transported.	[brad-whiop:insdes-4.5]
Attribute	warehousingDespatchTypeCode	WarehousingDespatchTypeCode	1..1	Code specifying the type of despatch for the shipment, for example picked from stock or cross-docked.	[brad-whiop:insdes-4.3]
Attribute	warehousingDeliveryInstructionCode	WarehousingDeliveryInstructionCode	0..*	Code specifying special order / delivery conditions.	[brad-whiop:insdes-4.4] perhaps reuse some values of OrderInstructionCode

4.3. Warehousing Outbound Instruction – Shipment Item

Class Diagram



GDD Report

The content of the WarehousingOutboundInstructionShipmentItem class, its structure and component definitions can be accessed in the Global Data Dictionary:

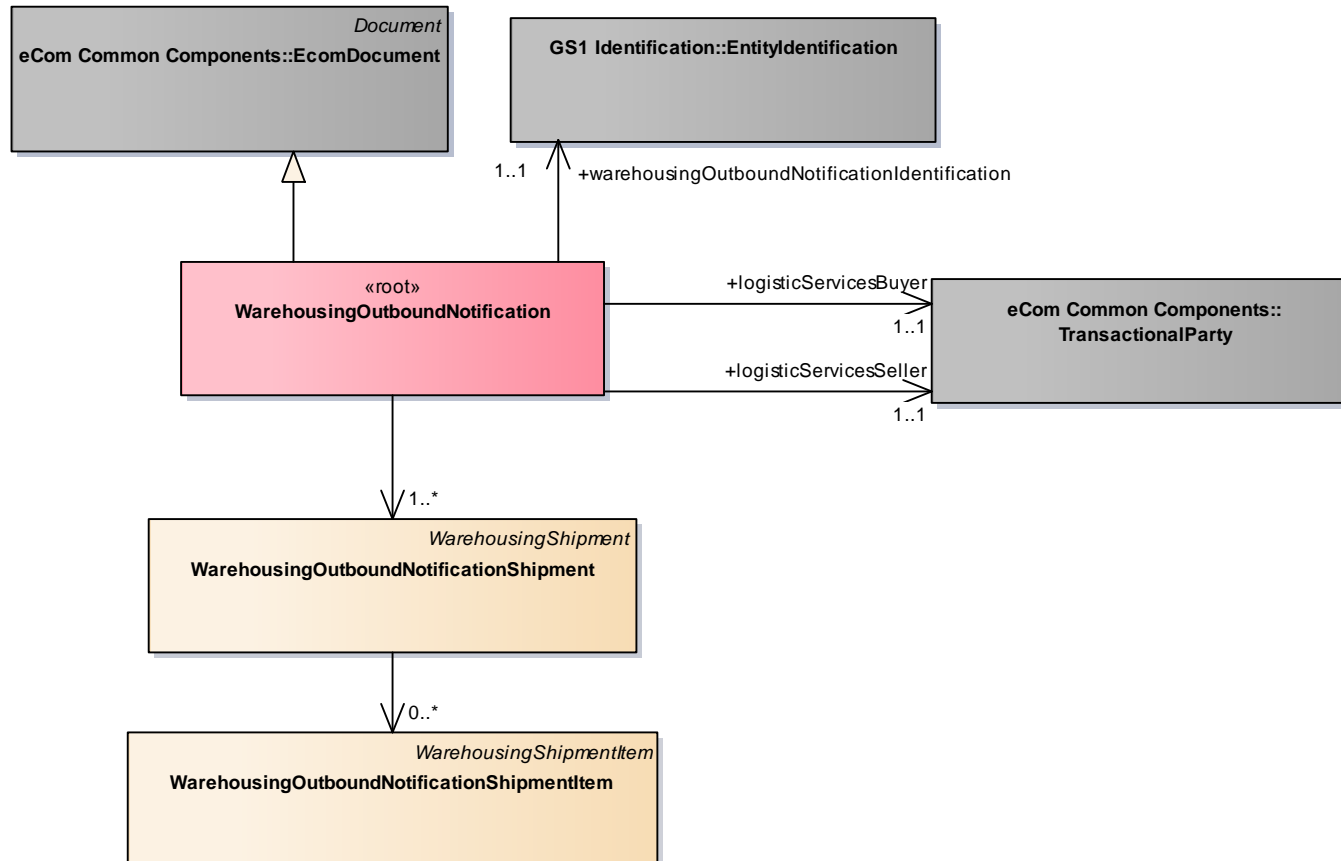
http://apps.gs1.org/GDD/bms/Version3_2/Pages/bieDetails.aspx?semanticURN=urn:gs1:gdd:bie:WarehousingOutboundInstructionShipmentItem

Content	Attribute / Role	Datatype /Secondary class	Multiplicity	Definition	Requirements
WarehousingOutboundInstructionShipmentItem				A shipment item is collection of trade items and related logistic units that can each be identified (uniquely) within a shipment.	[brad-whiop:insdes-5]
Association	inboundShipmentReference	ShipmentIdentification	0..1	Reference to the cross-docked receipt from which the item has to be taken.	[brad-whiop:insdes-5.4]

Content	Attribute / Role	Datatype /Secondary class	Multiplicity	Definition	Requirements
Generalization		WarehousingShipmentItem			
Association	inboundLogisticUnitReference	LogisticUnitIdentification	0..*	Reference to the cross-docked logistic unit from which the item has to be taken.	[brad-whiop:insdes-5.5]
Association	inlineServiceInstruction	WarehousingServiceInstruction	0..*	Instruction specifying a service to be carried out by the logistic services seller during the inbound process.	[brad-whiop:insdes-5.6]
Attribute	plannedDespatchQuantity	Quantity	1..1	The quantity that is ordered / planned to be despatched.	[brad-whiop:insdes-5.1]
Attribute	deliveryInstructionCode	WarehousingDeliveryInstructionCode	0..*	Code specifying special order / delivery conditions.	[brad-whiop:insdes-5.2] perhaps reuse some values of OrderInstructionCode
Attribute	crossDockIndicator	boolean	0..1	Indication whether or not the shipped item needs to be taken from a cross-docked receipt instead of from stock.	

4.4. Warehousing Outbound Notification

Class Diagram



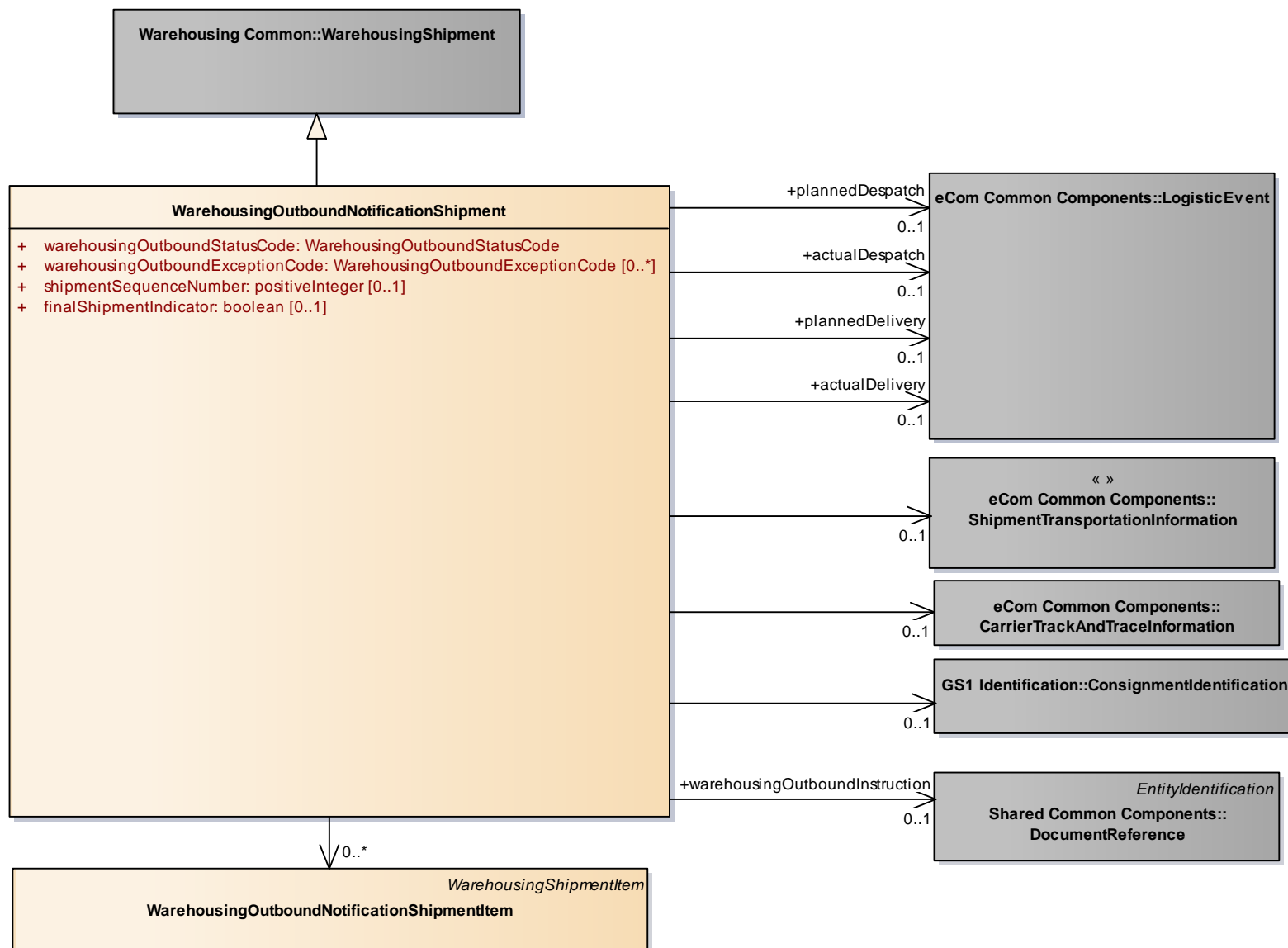
GDD Report

The content of the WarehousingOutboundNotification class, its structure and component definitions can be accessed in the Global Data Dictionary: http://apps.gs1.org/GDD/bms/Version3_2/Pages/bieDetails.aspx?semanticURN=urn:gs1:gdd:bie:WarehousingOutboundNotification

Content	Attribute / Role	Datatype /Secondary class	Multiplicity	Definition	Requirements
WarehousingOutboundNotification				Message that supports the warehouse outbound process, and enables a Logistic Services Provider (LSP) to inform his Logistic Services Client (LSC) on the status of goods shipped on behalf of the client.	
Generalization		EcomDocument		Basic information about the content of the message including version number, creation date and time.	[brad-whiop:obsta-1]
Association		WarehousingOutboundNotificationShipment	1..*	Status information on the shipments that have been shipped or are expected to be shipped.	
Association	logisticServicesSeller	TransactionalParty	1..1	A party that provides logistics services to another party.	[brad-whiop:obsta-3]
Association	logisticServicesBuyer	TransactionalParty	1..1	A party that purchases logistics services from another party.	[brad-whiop:obsta-2]
Association	warehousingOutboundNotificationIdentification	EntityIdentification	1..1	The identification of the warehousing outbound notification document.	[brad-whiop:obsta-1]

4.5. Warehousing Outbound Notification – Shipment

Class Diagram



GDD Report

The content of the WarehousingOutboundNotificationShipment class, its structure and component definitions can be accessed in the Global Data Dictionary:

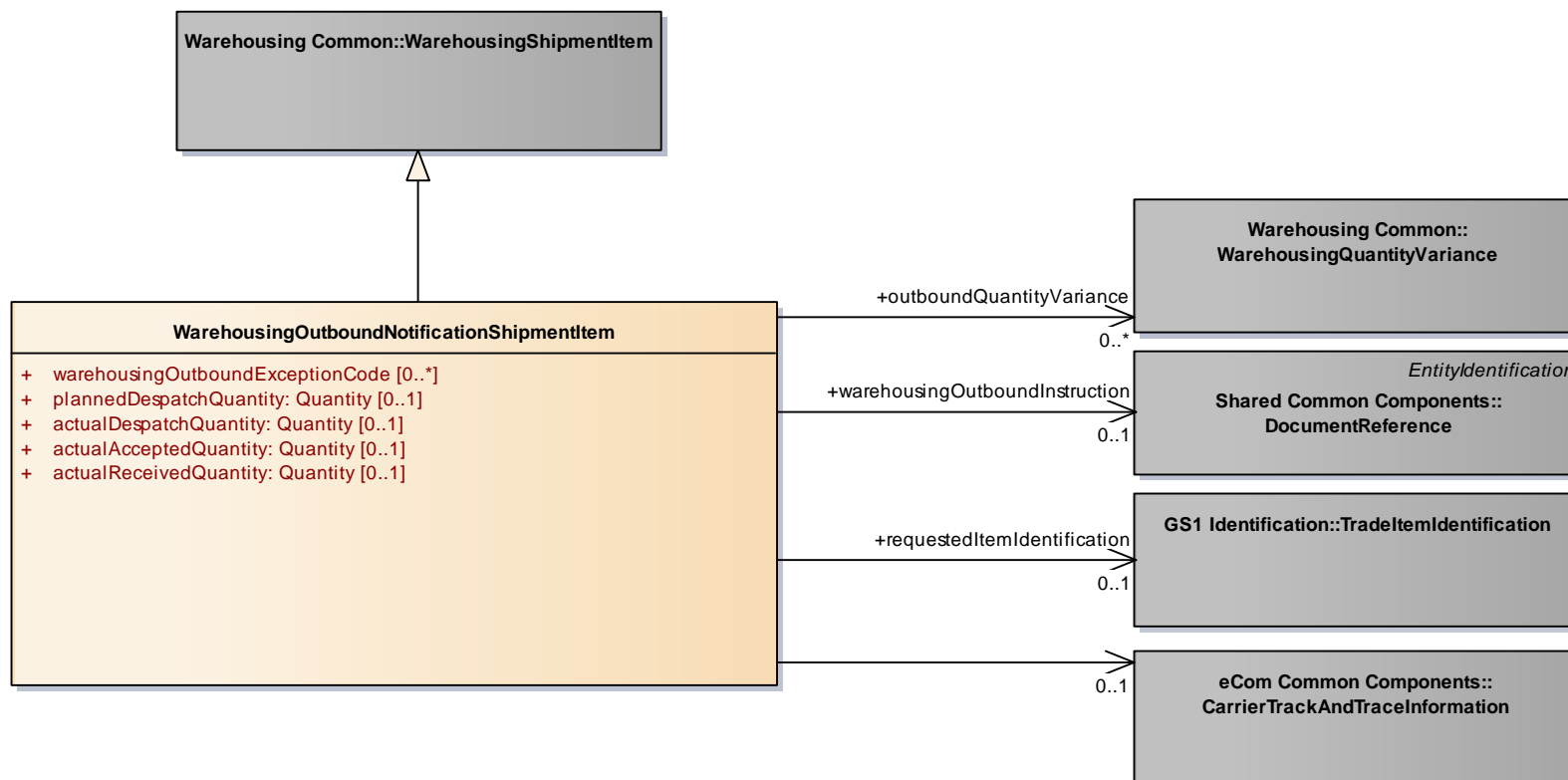
http://apps.gs1.org/GDD/bms/Version3_2/Pages/bieDetails.aspx?semanticURN=urn:gs1:gdd:bie:WarehousingOutboundNotificationShipment

Content	Attribute / Role	Datatype /Secondary class	Multiplicity	Definition	Requirements
WarehousingOutboundNotificationShipment				A shipment is an identifiable collection of one or more Trade Items available to be transported together from the shipper (Original Consignor/Shipper), to the receiver (Final/Ultimate Consignee).	[brad-whiop:obsta-4]
Association	actualDelivery	LogisticEvent	0..1	Details on the date and time the goods were actually delivered.	[brad-whiop:obsta-4.7]
Association		ConsignmentIdentification	0..1	Identification of the consignment that contains the shipment.	[brad-whiop:obsta-4.10.2]
Generalization		WarehousingShipment			
Association	plannedDelivery	LogisticEvent	0..1	Details on the date and time the goods were planned to be delivered.	[brad-whiop:obsta-4.6]
Association		CarrierTrackAndTraceInformation	0..1	Package tracking and tracing references provided by the Carrier.	
Association	warehousingOutboundInstruction	DocumentReference	0..1	A reference to the related outbound instruction message.	
Association		WarehousingOutboundNotificationShipmentItem	0..*	Details on the items contained in the shipment.	
Association	plannedDespatch	LogisticEvent	0..1	Details on the date and time the goods were planned to be despatched.	[brad-whiop:obsta-4.4]
Association	actualDespatch	LogisticEvent	0..1	Details on the date and time the goods were actually despatched.	[brad-whiop:obsta-4.5]

Content	Attribute / Role	Datatype /Secondary class	Multiplicity	Definition	Requirements
Association		ShipmentTransportationInformation	0..1	Information on the way the shipment was transported.	[brad-whiop:obsta-4.10.1]
Attribute	warehousingOutboundStatusCode	WarehousingOutboundStatusCode	1..1	Code specifying the status of the outbound delivery.	[brad_wio:ibsta-4.2]
Attribute	warehousingOutboundExceptionCode	WarehousingOutboundExceptionCode	0..*	Codes specifying an exception that occurred during the outbound process.	[brad_wio:ibsta-4.3]
Attribute	shipmentSequenceNumber	positiveInteger	0..1	A number indicating the sequence in which shipments related to the same delivery were despatched.	
Attribute	finalShipmentIndicator	boolean	0..1	Indicator specifying if a shipment, being one of multiple shipments for the same delivery, is the final shipment. See also shipmentSequenceNumber.	

4.6. Warehousing Outbound Notification – Shipment Item

Class Diagram



GDD Report

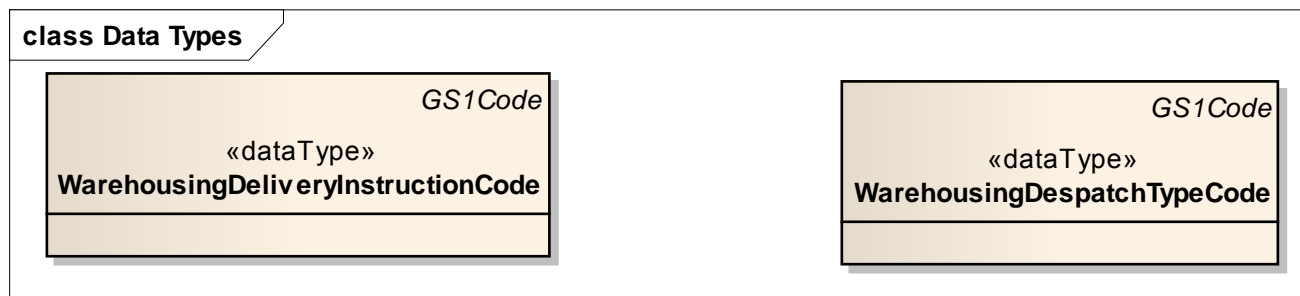
The content of the WarehousingOutboundNotificationShipmentItem class, its structure and component definitions can be accessed in the Global Data Dictionary:

http://apps.gs1.org/GDD/bms/Version3_2/Pages/bieDetails.aspx?semanticURN=urn:gs1:gdd:bie:WarehousingOutboundNotificationShipmentItem

Content	Attribute / Role	Datatype /Secondary class	Multiplicity	Definition	Requirements
WarehousingOutboundNotificationShipmentItem				A shipment item is collection of trade items and related logistic units that can each be identified (uniquely) within a shipment.	[brad-whiop:obsta-5]
Association		CarrierTrackAndTraceInformation	0..1	Package tracking and tracing references provided by the Carrier.	
Association	requestedItemIdentification	TradeItemIdentification	0..1	The identification of the trade item that was requested to be delivered, but was replaced with another trade item.	
Generalization		WarehousingShipmentItem			
Association	warehousingOutboundInstruction	DocumentReference	0..1	A reference to the related line item in the outbound instruction.	
Association	outboundQuantityVariance	WarehousingQuantityVariance	0..*	Quantity and reason of a shortage or surplus occurring in a warehousing process.	[brad-whiop:obsta-5.7]
Attribute	warehousingOutboundExceptionCode		0..*	Codes specifying an exception that occurred during the outbound process.	[brad_wio:obsta-5.2]
Attribute	plannedDespatchQuantity	Quantity	0..1	The number of items that were planned to be despatched.	[brad_wio:obsta-5.3]
Attribute	actualDespatchQuantity	Quantity	0..1	The number of items that were despatched.	[brad_wio:obsta-5.4]
Attribute	actualAcceptedQuantity	Quantity	0..1	The number of items that were accepted by the receiver.	[brad_wio:obsta-5.5]
Attribute	actualReceivedQuantity	Quantity	0..1	The number of items that were received by the receiver.	[brad_wio:obsta-5.6]

4.7. Warehousing Outbound Instruction - Data Types

Class Diagram

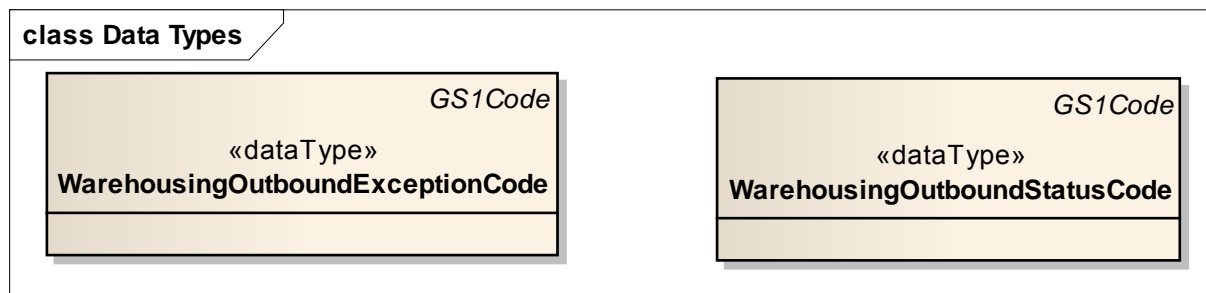


GDD Report

Content	Attribute / Role	Datatype /Secondary class	Multiplicity	Definition	Requirements
WarehousingDeliveryInstructionCode					
Generalization		GS1Code			
WarehousingDespatchTypeCode					
Generalization		GS1Code			

4.8. Warehousing Outbound Notification - Data Types

Class Diagram



GDD Report

Content	Attribute / Role	Datatype /Secondary class	Multiplicity	Definition	Requirements
WarehousingOutboundExceptionCode					
Generalization		GS1Code			
WarehousingOutboundStatusCode					
Generalization		GS1Code			



Note: Reference Shared Common Library Business Message (BMS) Release 3.2.0 and eCom Domain Common Library Business Message (BMS) Release 3.2.0 for all common information.

4.9. Code Lists

Class	Codelist	GDD Link
WarehousingOutboundInstr uctionShipment, WarehousingOutboundInstr uctionShipmentItem	WarehousingDeliveryI nstructionCode	http://apps.gs1.org/GDD/Pages/clDetails.aspx?semanticURN=urn:gs1:gdd:cl:WarehousingDeliveryInstructionCode
WarehousingOutboundInstr uctionShipment	WarehousingDespatc hTypeCode	http://apps.gs1.org/GDD/Pages/clDetails.aspx?semanticURN=urn:gs1:gdd:cl:WarehousingDespatchTypeCode
WarehousingOutboundNotif icationShipment	WarehousingOutboun dExceptionCode	http://apps.gs1.org/GDD/Pages/clDetails.aspx?semanticURN=urn:gs1:gdd:cl:WarehousingOutboundExceptionCode
WarehousingOutboundNotif icationShipment	WarehousingOutboun dStatusCode	http://apps.gs1.org/GDD/Pages/clDetails.aspx?semanticURN=urn:gs1:gdd:cl:WarehousingOutboundStatusCode



Note: Refer to the Global Data Dictionary (GDD) for the code values.

5. Business Message Examples

5.1. Example 1

This is an example of the Warehousing Outbound Instruction message.

Party Information

GS1 Global Location Number	Party Type
3333333000001	Logistic Services Seller
2222222000004	Logistic Services Buyer
3333333000018	Shipper
4444444000008	Receiver

Message Example 1

Attribute	Value
WarehousingOutboundInstruction	
creationDateTime	2012-07-17 12:15
documentStatusCode	ORIGINAL
documentActionCode	ADD
EntityIdentification (+warehousingOutboundInstructionIdentification)	
entityIdentification	INSD00123
TransactionalParty (+logisticServicesSeller)	
gln	3333333000001
TransactionalParty (+logisticServicesBuyer)	

Attribute	Value
gln	2222222000004
WarehousingOutboundInstructionShipment (+)	
warehousingDespatchTypeCode	WAREHOUSE_SHIPMENT
TransactionalParty (+receiver)	
gln	4444444000008
TransactionalParty (+shipper)	
gln	3333333000018
ShipmentTransportationInformation (+)	
transportServiceCategoryType	30
transportServiceLevelCode	STANDARD_SERVICE
LogisticEvent (+plannedDelivery)	
DateTimeRange (+logisticEventPeriod)	
beginDate	2012-07-18
beginTime	15:00
endDate	2012-07-18
endTime	16:00
WarehousingOutboundInstructionShipmentItem	
lineItemNumber	1
plannedDespatchQuantity	30
TransactionalTradeItem (+)	
gtin	01111111000120
WarehousingServiceInstruction (+inlineServiceInstruction)	
warehousingServiceConditionCode	BUILD_PALLET
WarehousingServiceAttribute (+)	
warehousingServiceAttributeTypeCode	PALLET_HEIGHT
warehousingServiceAttributeMeasurement	180 cm

5.2. Example 2

This is an example of the Warehousing Outbound Notification message.

Message Example 2

Attribute	Value
WarehousingOutboundNotification	
creationDateTime	2012-07-18 12:15
documentStatusCode	ORIGINAL
documentActionCode	ADD

Attribute	Value
EntityIdentification (+warehousingOutboundNotificationIdentification)	
entityIdentification	OBSTA00113
TransactionalParty (+logisticServicesSeller)	
gln	3333333000001
TransactionalParty (+logisticServicesBuyer)	
gln	2222222000004
WarehousingOutboundNotificationShipment	
warehousingOutboundStatusCode	READY_TO_SHIP
TransactionalParty (+receiver)	
gln	4444444000008
TransactionalParty (+shipper)	gln: 3333333000018
ShipmentIdentification (+)	
gsin	33333330000114050
WarehousingOutboundNotificationShipmentItem	
lineItemNumber	1
warehousingOutboundExceptionCode	QUANTITY_ROUNDED
plannedDespatchQuantity	30
actualDespatchQuantity	32
TransactionalTradeItem (+)	
gtin	01111111000120
WarehousingQuantityVariance (+outboundQuantityVariance)	
varianceQuantity	2
warehousingQuantityVarianceCode	QUANTITY_OVER
LogisticUnit	
tradeItemQuantity	16
LogisticUnitIdentification (+)	
sscc	133333330000003450
LogisticUnit	
tradeItemQuantity	16
LogisticUnitIdentification (+)	
sscc	133333330000003450

5.3. Example 3

This is a **complex example** of the Warehousing Outbound Instruction message. Logistic Services Buyer 2222222 instructs his Logistic Services Seller (3333333, the warehouse service provider) that goods need to be shipped and transported as follows:

- By a LSB designated carrier (5555555) to an LSB designated freight forwarder (6666666).
- Freight forwarder (6666666) will transport the goods overseas to a de-consolidation centre (4444444001104) controlled by the customer (4444444).
- From there the customer will arrange transport to the final customer location (4444444002224).

Message Example 3

Attribute	Value	Comment
WarehousingOutboundInstruction		
creationDateTime	2012-07-17 12:15	
documentStatusCode	ORIGINAL	
documentActionCode	ADD	
EntityIdentification (+warehousingOutboundInstructionIdentification)		
entityIdentification	INSDDES00123	
TransactionalParty (+logisticServicesSeller)		The LS SELLER has a single central GLN to identify the single Integration Services Point of Contact for that LSS.
gln	3333333000001	
TransactionalParty (+logisticServicesBuyer)		The LS BUYER has a single central GLN to identify the single Integration Services Point of Contact for that LSB.
gln	2222222000004	
WarehousingOutboundInstruction Shipment (+)		
warehousingDespatchType Code	WAREHOUSE_SHIPMENT	
TransactionalParty (+receiver)		Identifies one of multiple entities within the Customers (Material Buyer) organisation.
gln	4444444000008	
TransactionalParty (+shipper)		Identifies the warehouse from which the LSS is expected to despatch the Order. The LS SELLER may operate many different warehousing sites even multiple different sites for the same LS BUYER. The GLN used to identify the sites are the GLN assigned and owned by the LS SELLER.
gln	3333333000018	
TransactionalParty (+shipTo)		Identifies the facility (de-consolidation centre) where the Customer wants to get the

Attribute	Value	Comment
		Order delivered to by the forwarder. This GLN is assigned by the Customer who may operate many different facilities each of which (may be) identified with a GLN. The Customer should then also clearly identify/include this GLN in the Order placed on the Material Supplier (the LS BUYER).
gln	4444444001104	
TransactionalParty (+ultimateConsignee)		Identifies the final delivery location for the Order. This GLN is assigned by the Customer (who is ultimately responsible for the delivery to this point). Clearly the Customer should include the appropriate GLN for the ultimateConsignee in the original Order placed on the Material Supplier (the LS BUYER).
gln	4444444002224	
ShipmentTransportationInformation (+)		
transportServiceCategoryType	30	
transportServiceLevelCode	STANDARD_SERVICE	
TransactionalParty (+carrier)		Identifies the specific entity within the Carriers organisation that will be responsible for the physical movement of the Order from the warehouse
gln	5555555000005	
TransactionalParty (+freightForwarder)		Identifies the location of the freight forwarder where the goods need to be dropped-off.
gln	6666666000002	
LogisticEvent (+plannedDelivery)		
DateOptionalTime (+logisticEventDateTime)		
date	2012-07-25	
WarehousingOutboundInstruction ShipmentItem		
lineItemNumber	1	
plannedDespatchQuantity	30	
TransactionalTradeItem (+)		
gtin	01111111000120	

6. Implementation Considerations

6.1. User Guide

The Functional User Guide contains more information about the structure and content of the Warehouse Outbound Instruction and Notification message:
http://www.gs1.org/docs/ecom/xml/3/3.2/eCom-Trade_messages.html#WarehouseOutboundInstructionandNotification

6.2. Message Specific Considerations

Not applicable

7. Summary of Changes

Any change in the GS1 standards is done based on the Work Request (WR) submitted by the GS1 User Companies or Member Organisations. All Work Requests are documented in the Work Request system available on the GS1 website: <http://wr.gs1.org>. The system is accessible to registered users. New visitors need to register first, to be able to access it. WRs can be searched by the number referenced in tables below, see: Search Work Requests. The number starts with the two last digits of the year when it was submitted, followed by the consecutive number within that year.



Note: WRs submitted earlier than February 2012 should be searched in Old Change Requests.

7.1. BMS Release 3.1

First release

7.2. BMS Release 3.2

Change	Associated WR
<p>Added Attribute Value Pair at the root, line item and sub line item levels</p> <p>class WarehousingOutboundInstruction - maintenance view</p> <pre> classDiagram class WarehousingOutboundInstruction { <<root>> maintenance Change: (Verified) 3.2 changed generalisation from Document to eComDocument class to include AVP (WR 14-110) } </pre> <p>class WarehousingOutboundInstructionShipmentItem - maintenance view</p> <pre> classDiagram class WarehousingCommonWarehouseShipmentItem { maintenance Change: (Verified) 3.2 added +avpList (WR 14-110) Change: (Verified) 3.2 added +parentLineItemNumber (WR 14-021 & 14-044) } class WarehousingOutboundInstructionShipmentItem { + plannedDespatchQuantity : Quantity + deliveryInstructionCode: WarehousingDeliveryInstructionCode [0..*] + crossDockIndicator: boolean [0..1] } class GS1IdentificationLogisticUnitIdentification { GS1 Identification::LogisticUnitIdentification } class GS1IdentificationShipmentIdentification { GS1 Identification::ShipmentIdentification } class WarehousingCommonWarehouseServiceInstruction { Warehousing Common::WarehousingServiceInstruction } WarehousingCommonWarehouseShipmentItem < -- WarehousingOutboundInstructionShipmentItem WarehousingOutboundInstructionShipmentItem --> "0..*" GS1IdentificationLogisticUnitIdentification : +inboundLogisticUnitReference WarehousingOutboundInstructionShipmentItem --> "0..1" GS1IdentificationShipmentIdentification : +inboundShipmentReference WarehousingOutboundInstructionShipmentItem --> "0..*" WarehousingCommonWarehouseServiceInstruction : +inlineServiceInstruction </pre> <p>class WarehousingOutboundNotification - maintenance view</p> <pre> classDiagram class WarehousingOutboundNotification { <<root>> maintenance Change: (Verified) 3.2 changed generalisation from Document to eComDocument class to include AVP (WR 14-110) } </pre>	14-000110

Change	Associated WR
<p>Added route of the transport and or truck-ID</p> <pre> class WarehousingOutboundInstructionShipment - maintenance view class WarehousingCommon::WarehousingShipment class WarehousingOutboundInstructionShipment + warehousingDespatchTypeCode: WarehousingDespatchTypeCode + warehousingDeliveryInstructionCode: WarehousingDeliveryInstructionCode [0..1] class eComCommonComponents::LogisticEvent class eComCommonComponents::CarrierPickUpDropOffDetails maintenance Change: (Complete) 3.1 new class to support Warehousing process (BRAD WIO) class eComCommonComponents::ShipmentTransportationInformation maintenance Change: (Complete) 3.1: added freightForwarder (BRAD WIO; WR 09-189) Change: (Verified) 3.2 added +routeID (WR 13-203 & 14-074) Change: (Verified) 3.2 added +transportMeansID (WR 14-074) class WarehousingCommon::WarehousingServiceInstruction WarehousingOutboundInstructionShipment --> "+plannedDespatch" 0..1 eComCommonComponents::LogisticEvent WarehousingOutboundInstructionShipment --> "+plannedDelivery" 0..1 eComCommonComponents::LogisticEvent WarehousingOutboundInstructionShipment --> "" 0..1 eComCommonComponents::CarrierPickUpDropOffDetails WarehousingOutboundInstructionShipment --> "" 0..1 eComCommonComponents::ShipmentTransportationInformation WarehousingOutboundInstructionShipment --> "+inlineServiceInstruction" 0..1 WarehousingCommon::WarehousingServiceInstruction WarehousingOutboundInstructionShipment --> "/0..*"/ WarehousingShipmentItem WarehousingOutboundInstructionShipment -- < WarehousingCommon::WarehousingShipment </pre>	14-000074
<p>Added carrier track and trace information with: package tracking number and carrier track and trace URL.</p> <pre> class WarehousingOutboundNotification_Shipment - Maintenance view class WarehousingOutboundNotificationShipment + warehousingOutboundStatusCode: WarehousingOutboundStatusCode + warehousingOutboundExceptionCode: WarehousingOutboundExceptionCode [0..*] + shipmentSequenceNumber: positiveInteger [0..1] + finalShipmentIndicator: boolean [0..1] maintenance Change: (Verified) 3.2 added association to CarrierTrackAndTraceInformation (WR 13-106) class CarrierTrackAndTraceInformation maintenance Change: (Verified) 3.2 added association to WarehousingOutboundNotificationShipment (WR 13-106) class WarehousingOutboundNotificationShipment maintenance Change: (Verified) 3.2 added association to CarrierTrackAndTraceInformation (WR 13-106) </pre>	13-000106

Change	Associated WR
<ul style="list-style-type: none"> Added carrier track and trace information with: package tracking number and carrier track and trace URL (WR 13-106) Added Attribute Value Pair at the root, line item and sub line item levels (WR 14-110) <div> class WarehousingOutboundNotification_ShipmentItem - Maintenance view <div> <div>WarehousingOutboundNotificationShipmentItem</div> <div> + warehousingOutboundExceptionCode [0..*] + plannedDespatchQuantity: Quantity [0..1] + actualDespatchQuantity: Quantity [0..1] + actualAcceptedQuantity: Quantity [0..1] + actualReceivedQuantity: Quantity [0..1] </div> <div> <i>maintenance</i> Change: (Verified) 3.2 added association to CarrierTrackAndTraceInformation (WR 13-106) </div> </div> </div>	13-000106 14-000110

8. Appendices

(Insert Content Here)

9. Acknowledgements

The following is a list of individuals (and their companies) who participated in the creation, review and approval of this BMS.

9.1.1. Work Group

Function	Name	Company / organisation
Co-Chair	Jaco Voorspuij	DHL
Co-Chair	Fred Kempkes	Unilever
Member	Andrew Jones	General Mills, Inc.
Member	Bonnie Ryan	GS1 Australia
Member	Kurt Herregodts	GS1 Belgium & Luxembourg
Member	Roman Strand	GS1 Germany
Member	Mia Lenman	GS1 Sweden
Member	Shan Welch	GS1 UK
Member	Geert Simmer	GSPro

Function	Name	Company / organisation
Member	Dr. Karlheinz Mevissen	HAVI Logistics
Member	Robin Kidd	Nestle
Member	Mandeep Sodhi	Nestle
Member	Marc Cox	Philips Electronics N.V.
Member	Nitin Vidwans	Walmart Stores, Inc.

9.1.2. Development Team Members

Function	Name	Organisation
GSMP Process Lead	Jean-Luc Champion	GS1 GO
Standards Content Lead	Coen Janssen	GS1 GO
Technical Development Lead	Ewa Iwicka	GS1 GO
Peer Review	Eric Kauz	GS1 GO