



Despatch Advice Line Item Extension eBmeat

Business Message Standard (BMS)

Release 3.2

01-Dec-2014, Issue 1



Document Summary

Document Item	Current Value
Document Title	Business Message Standard (BMS) - Despatch Advice Line Item Extension eBmeat
BMS Release	3.2
Document Version	Public Review Draft 1, 15-Sep-2014
Work Group Name	eCom SMG
BMS Template Version	2.4

Work Request Reference

Date of WR Submission to GSMP:	WR Submitter(s):	Refer to Change Request (WR) Number(s):
10-Sep-2004	GS1 France GS1 Germany	04-000177 (02-000195)
25-Jun-2014	GS1 Global Office	14-000110

Business Requirements Document (BRAD) Reference

BRAD Title	BRAD Issue Date	BRAD Version
BRD Exchange Traceability and Processing History Data of Beef Products (Slaughter to Retail)	14 Mar 2005	2.5.1

Document Change History

Date of Change	Version	Changed By	Reason for Change	Summary of Change
12-Jan-2012	BMS 3.0 – Issue 1	Mark Van Eeghem	BMS Release 3.0	See summary of changes
01-May-2013	BMS 3.1 – Issue 1	Coen Janssen	BMS Release 3.1	See summary of changes
01-Dec-2014	BMS 3.2 – Issue 1	Ewa Iwicka	BMS Release 3.2	See summary of changes

Disclaimer

WHILST EVERY EFFORT HAS BEEN MADE TO ENSURE THAT THE GUIDELINES TO USE THE GS1 STANDARDS CONTAINED IN THE DOCUMENT ARE CORRECT, GS1 AND ANY OTHER PARTY INVOLVED IN THE CREATION OF THE DOCUMENT HEREBY STATE THAT THE DOCUMENT IS PROVIDED WITHOUT WARRANTY, EITHER EXPRESSED OR IMPLIED, REGARDING ANY MATTER, INCLUDING BUT NOT LIMITED TO THE OF ACCURACY, MERCHANTABILITY OR FITNESS FOR A PARTICULAR PURPOSE, AND HEREBY DISCLAIM ANY AND ALL LIABILITY, DIRECT OR INDIRECT, FOR ANY DAMAGES OR LOSS RELATING TO OR RESULTING FROM THE USE OF THE DOCUMENT. THE DOCUMENT MAY BE MODIFIED, SUBJECT TO DEVELOPMENTS IN TECHNOLOGY, CHANGES TO THE STANDARDS, OR NEW LEGAL REQUIREMENTS. SEVERAL PRODUCTS AND COMPANY NAMES MENTIONED HEREIN MAY BE TRADEMARKS AND/OR REGISTERED TRADEMARKS OF THEIR RESPECTIVE COMPANIES. GS1 IS A REGISTERED TRADEMARK OF GS1 AISBL.

Table of Contents

1. Business Domain View	4
1.1. Introduction.....	4
1.2. References	4
2. Business Context	5
3. Business Transaction View	5
3.1. Business Transaction – Exchange Beef Traceability Data	5
4. Business Information View	8
4.1. Meat Despatch Advice Line Item Extension	8
4.2. Meat Work Identification.....	11
4.3. Animal Identification	13
4.4. Processing Activity Details	14
4.5. Data Types	18
4.6. Code Lists	20
5. Business Message Examples	20
5.1. Example 1	20
5.2. Example 2	35
6. Implementation Considerations	50
6.1. User Guide	50
6.2. Message Specific Considerations	50
7. Summary of Changes.....	50
7.1. BMS Release 3.0	50
7.2. BMS Release 3.1	50
7.3. BMS Release 3.2	51
8. Appendices	51
9. Acknowledgements	51
9.1.1. Work Group	51
9.1.2. Development Team Members	53

1. Business Domain View

1.1. Introduction

Message Definition

Meat Product Extension is an extension to the Despatch Advice Document used to enable tracking & tracing (traceability) of meat products, by exchange of production history data.

Principles

This extension can be used only with Despatch Advice message; it is applied at the DespatchLineItem level.

1.2. References

Reference Number	Reference Name
[Ref1]	BRD Exchange Traceability and Processing History Data of Beef Products (Slaughter to Retail)
[Ref2]	BRAD Upstream Standards – Despatch, Receipt & Consumption 0.1.1
[Ref3]	BRD Despatch Advice 1.0.9.3
[Ref4]	EANCOM®-1997 (UN/EDIFACT D.96A)
[Ref5]	EANCOM®-2002 (UN/EDIFACT D.01B)
[Ref6]	Simpl-eb Principles EAN.UCC Business Message Standards July 2001 (Simpl-eb and FMCG extension)
[Ref7]	EbXML Core Components technical specification Version 1.8
[Ref8]	EbXML Core Component Catalogue Feb 2002
[Ref9]	UMM R8D and UMM N90 R10 (UN/CEFACT)
[Ref10]	eCom Domain Common Library 3.2
[Ref11]	Shared Common Library 3.2
[Ref12]	GS1 General Specifications
[Ref13]	GS1 Traceability Implementation ("TRACE-I")
[Ref14]	GCI-Glossary
[Ref15]	Project proposal eBmeat
[Ref16]	Traceability of beef (GS1)
[Ref17]	Stage3OnFarmProject (Australia)
[Ref18]	EANEDI Model 5A (Australia)
[Ref19]	EMEG-EDI Data Dictionary
[Ref20]	UN/ECE standard for bovine carcass and cuts
[Ref21]	UMM R8D and UMM N90 R10 (UN/CEFACT)
[Ref22]	PRODAT / Übermittlung von Stammdaten/Qualitätsdaten zur Rindfleischherkunft mit EANCOM® (Germany)

Reference Number	Reference Name
[Ref23]	DESADV Profil Boucherie (France)

2. Business Context

Context Category	Value(s)
Industry	All
Geopolitical	All
Product	All
Process	Deliver
System Capabilities	GS1 System
Official Constraints	None

3. Business Transaction View

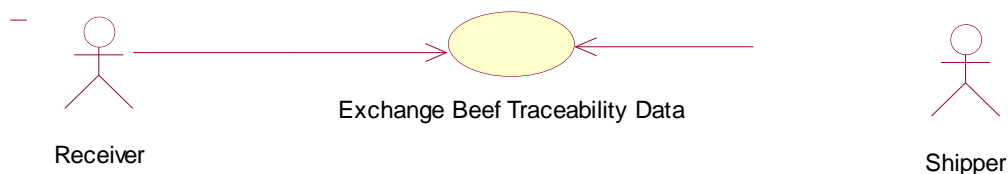
The extension for the “**Exchange Traceability and Processing History Data of Beef Products (Slaughter to Retail)**” details the data needed to be used in conjunction with the Despatch Advice message.

The team was chartered to define the business requirements and this has been achieved by providing data definitions and UML-model for the exchange of traceability and processing history data of unprepared beef products (slaughter to retail).

Note that this model can be used as a basis for other tasks regarding traceability and/or processing history of products.

3.1. Business Transaction – Exchange Beef Traceability Data

Use Case Diagram



Use Case Description

Use Case ID	UC-1
Use Case Name	Exchange Beef Traceability Data
Use Case Description	Exchange beef history data and beef product despatch information in order to support traceability and quality management.
Actors (Goal)	Shipper (Slaughterhouse; Post-Slaughter Processor, Wholesaler) Receiver (Post-Slaughter Processor, Wholesaler, Retailer)
Performance Goals	None

Preconditions	<p>A trading agreement (including alignment of master data, payment and delivery terms) has been established between Seller and Buyer.</p> <p>A valid order from the Buyer has been received and accepted.</p> <p>Traceability data for product(s) ordered have been compiled and prepared for exchange by the Shipper.</p> <p>The beef products are uniquely identified.</p>															
Post conditions	<p>Receiver has been supplied with traceability data for beef product(s) which he is to receive.</p> <p>Place, time and conditions for delivery have been communicated.</p>															
Scenario	<p>Begins when the Shipper secures in his local storage medium the traceability data of beef product(s).</p> <p>Continues with:</p> <table><tr><th>Step #</th><th>Actor</th><th>Activity Step</th></tr><tr><td></td><td>Shipper</td><td>Shipper sends the Receiver traceability data of beef products to be delivered.</td></tr><tr><td></td><td>Receiver</td><td>Receiver receives this traceability data.</td></tr><tr><td></td><td>Receiver</td><td>Receiver cross-checks traceability data with physical delivery.</td></tr><tr><td></td><td>Receiver</td><td>Receiver adds internal information to traceability data, where applicable.</td></tr></table> <p>Ends when the Receiver secures the traceability data in his local storage medium.</p>	Step #	Actor	Activity Step		Shipper	Shipper sends the Receiver traceability data of beef products to be delivered.		Receiver	Receiver receives this traceability data.		Receiver	Receiver cross-checks traceability data with physical delivery.		Receiver	Receiver adds internal information to traceability data, where applicable.
Step #	Actor	Activity Step														
	Shipper	Shipper sends the Receiver traceability data of beef products to be delivered.														
	Receiver	Receiver receives this traceability data.														
	Receiver	Receiver cross-checks traceability data with physical delivery.														
	Receiver	Receiver adds internal information to traceability data, where applicable.														
Alternative Scenario	<p>A discrepancy exists between traceability data and the physical delivery. (<i>Must be addressed in a separate project.</i>)</p>															
Business Transaction Rules	None															

Activity Diagram(s)

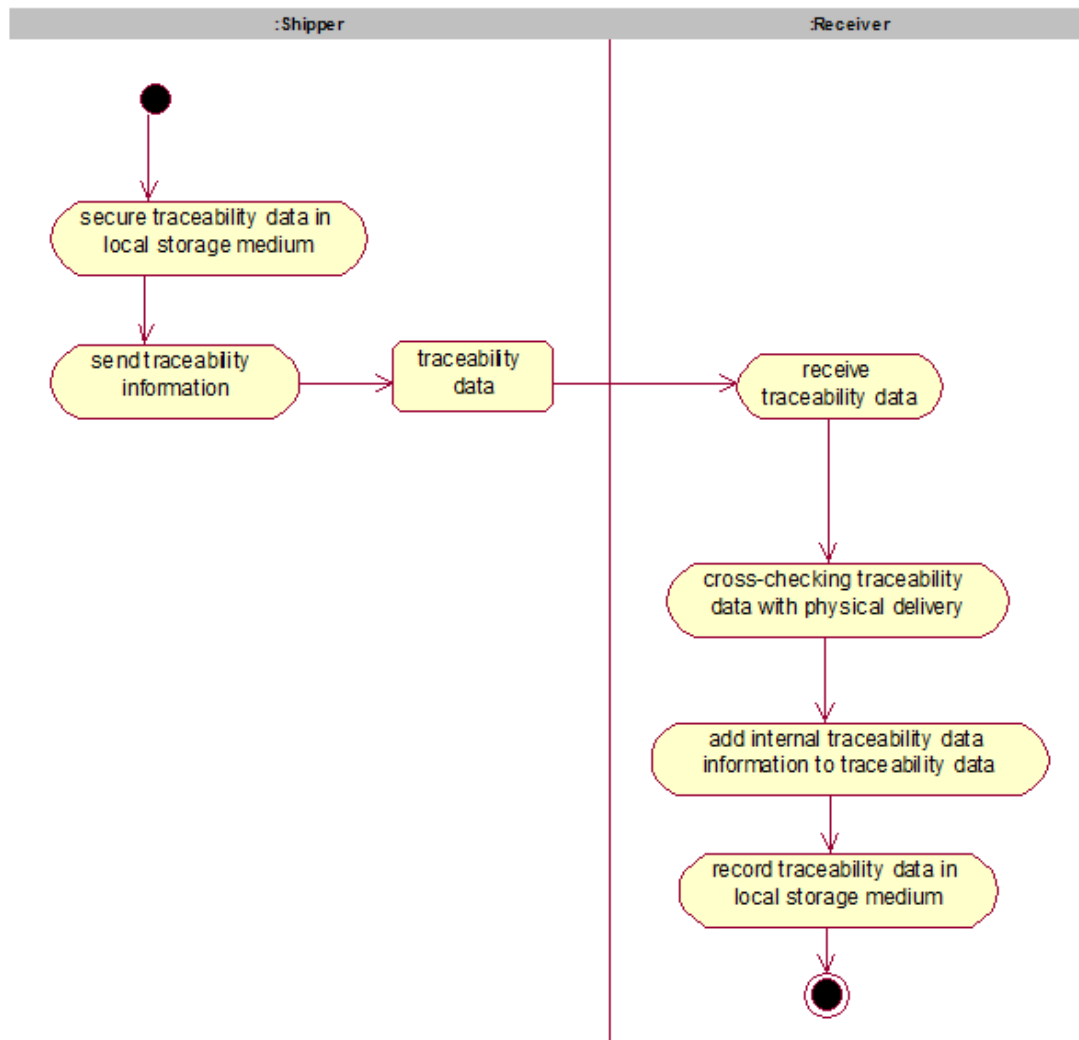


Figure 1 – Use Case Diagram: Business Transaction

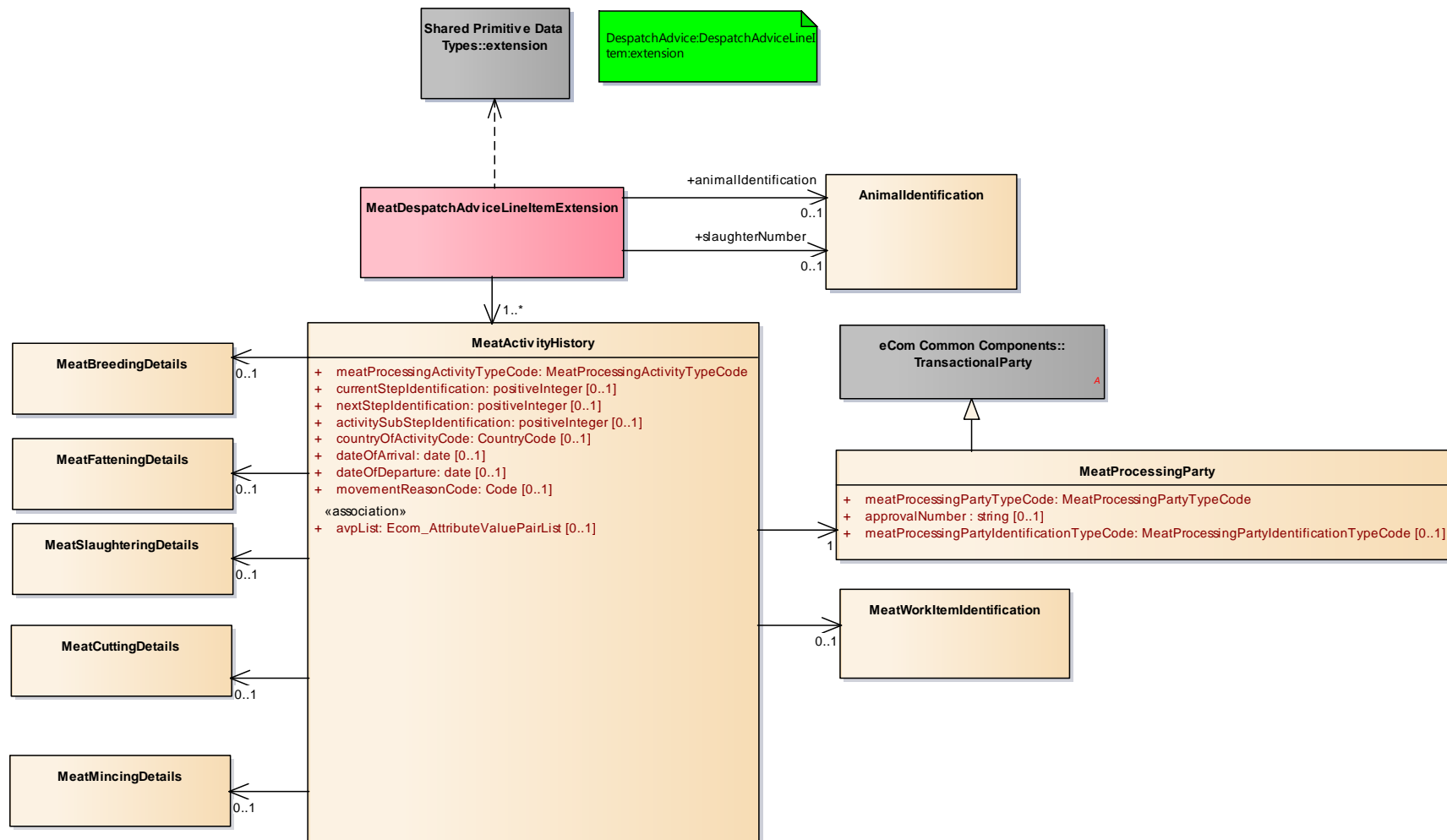
Sequence Diagram(s)

Not Applicable

4. Business Information View

4.1. Meat Despatch Advice Line Item Extension

Class Diagram



GDD Report

The content of the MeatDespatchAdviceLineItemExtension class, its structure and component definitions can be accessed in the Global Data Dictionary:

http://apps.gs1.org/GDD/bms/Version3_2/Pages/bieDetails.aspx?semanticURN=urn:gs1:gdd:bie:MeatDespatchAdviceLineItemExtension

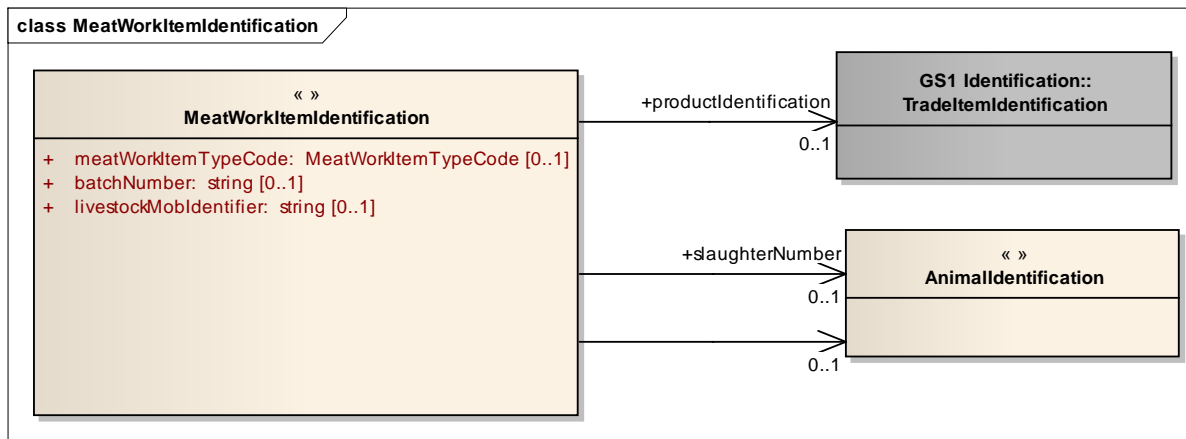
Content	Attribute / Role	Datatype / Secondary class	Multiplicity	Definition	Requirements
MeatDespatchAdviceLineItemExtension				An extension to the Despatch Advice Document used to enable tracking & tracing (traceability) of beef products.	
Association	animalIdentification	AnimalIdentification	0..1	Unique number given by a competent national authority to identify an animal individually.	
Dependency		extension			
Association		MeatActivityHistory	1..*	Details on the meat processing activities that were carried out	
Association	slaughterNumber	AnimalIdentification	0..1	Unique number given by a slaughterhouse to an animal.	
MeatActivityHistory				Information on the meat processing undertaken at a given point.	
Association		MeatMincingDetails	0..1	Information on the mincing activity.	
Association		MeatSlaughteringDetails	0..1	Information on the meat slaughtering activity.	
Association		MeatBreedingDetails	0..1	Information on the breeding activity.	
Association		MeatProcessingParty	1..1	Information on the party that carried out the meat processing activity.	
Association		MeatCuttingDetails	0..1	Information on the cutting activity.	
Association		MeatFatteningDetails	0..1	Information on the fattening activity.	

Content	Attribute / Role	Datatype / Secondary class	Multiplicity	Definition	Requirements
Association		MeatWorkItemIdentification	0..1	Information on the work item created as a result of the meat processing activity.	
Attribute	meatProcessingActivityTypeCode	MeatProcessingActivityTypeCode	1..1	Code specifying the type of meat processing undertaken at a given point.	
Attribute	currentStepIdentification	positiveInteger	0..1	Cardinal sequence of the current processing activity, in relation to the processing history.	
Attribute	nextStepIdentification	positiveInteger	0..1	Cardinal sequence of the subsequent processing activity, in relation to the processing history.	
Attribute	activitySubStepIdentification	positiveInteger	0..1	Identification for an activity within a multi-step meat process.	renamed from processingActivityStep, made 0..1
Attribute	countryOfActivityCode	CountryCode	0..1	Country where the meat processing takes place.	
Attribute	dateOfArrival	date	0..1	Date when the animal arrives at a new location.	
Attribute	dateOfDeparture	date	0..1	Date when the animal is departing to another location.	
Attribute	avpList	Ecom_AttributeValuePairList	0..1	Temporary attributes introduced between minor versions.	WR 14-000110
Attribute	movementReasonCode	Code	0..1	Code specifying the reason for the animal's transfer to another location.	
MeatProcessingParty				Information on a party undertaking a meat processing activity.	renamed from PerformerInformation
Generalization		TransactionalParty		Identification and name and address details of the meat processing party.	
Attribute	meatProcessingPartyTypeCode	MeatProcessingPartyTypeCode	1..1	Code specifying the type of party processing the meat. Example: Mincer.	renamed from performerType

Content	Attribute / Role	Datatype / Secondary class	Multiplicity	Definition	Requirements
Attribute	approvalNumber	string	0..1	Veterinary licence number allocated by a national authority.	
Attribute	meatProcessingPartyIdentificationTypeCode	MeatProcessingPartyIdentificationTypeCode	0..1	Code specifying the type of identification to be applied for the meat processing party.	renamed from performerIdentificationType

4.2. Meat Work Identification

Class Diagram



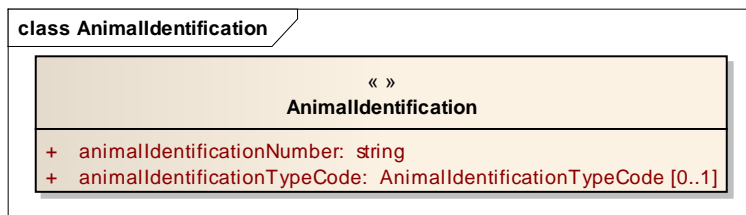
GDD Report

The content of the MeatWorkItemIdentification class, its structure and component definitions can be accessed in the Global Data Dictionary: http://apps.gs1.org/GDD/bms/Version3_2/Pages/bieDetails.aspx?semanticURN=urn:gs1:gdd:bie:MeatWorkItemIdentification

Content	Attribute / Role	Datatype / Secondary class	Multiplicity	Definition	Requirements
MeatWorkItemIdentification					renamed from WorkItemIdentification
Association		AnimalIdentification	0..1	Unique number given by a competent national authority to identify an animal individually.	
Association	slaughterNumber	AnimalIdentification	0..1	Unique number given by a slaughterhouse to an animal.	
Association	productIdentification	TradeItemIdentification	0..1	Product identification of the meat work item.	
Attribute	meatWorkItemTypeCode	MeatWorkItemTypeCode	0..1	Code specifying the type of meat work item.	
Attribute	batchNumber	string	0..1	A number that identifies a quantity of a product produced under similar conditions i.e. at one location, at one time and according to specific business rules.	
Attribute	livestockMobIdentifier	string	0..1	A collection of like breeds of livestock animals. Usually the livestock is moveable as a group.	

4.3. Animal Identification

Class Diagram



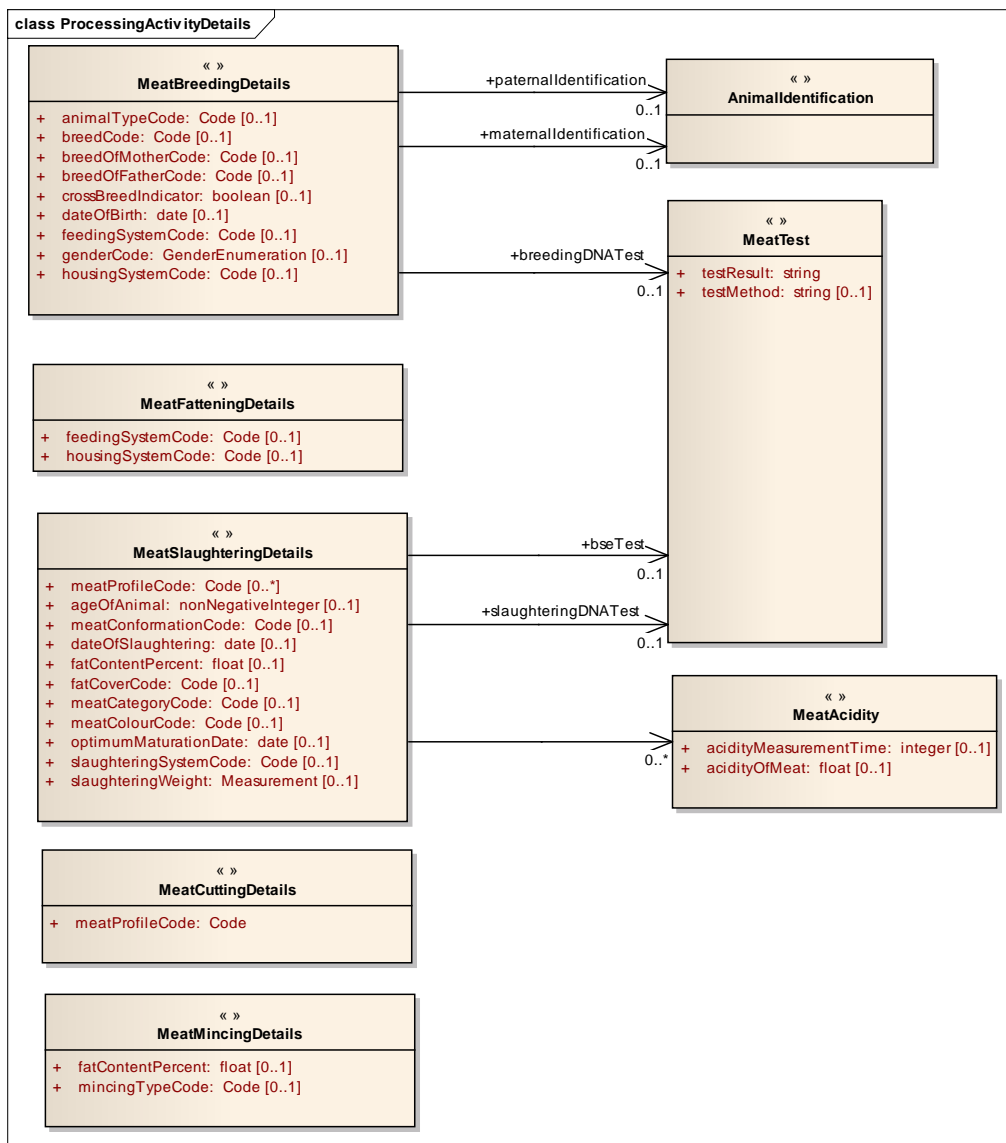
GDD Report

The content of the AnimalIdentification class, its structure and component definitions can be accessed in the Global Data Dictionary: http://apps.gs1.org/GDD/bms/Version3_2/Pages/bieDetails.aspx?semanticURN=urn:gs1:gdd:bie:AnimalIdentification

Content	Attribute / Role	Datatype / Secondary class	Multiplicity	Definition	Requirements
AnimalIdentification				Unique number given by a competent national authority to identify an animal individually.	
Attribute	animalIdentificationNumber	string	1..1	Identification Number for a given animal.	
Attribute	animalIdentificationTypeCode	AnimalIdentificationTypeCode	0..1	Nature of the Identification Number.	

4.4. Processing Activity Details

Class Diagram



GDD Report

The content of the MeatBreedingDetails class, its structure and component definitions can be accessed in the Global Data Dictionary:
http://apps.gs1.org/GDD/bms/Version3_2/Pages/bieDetails.aspx?semanticURN=urn:gs1:gdd:bie:MeatBreedingDetails

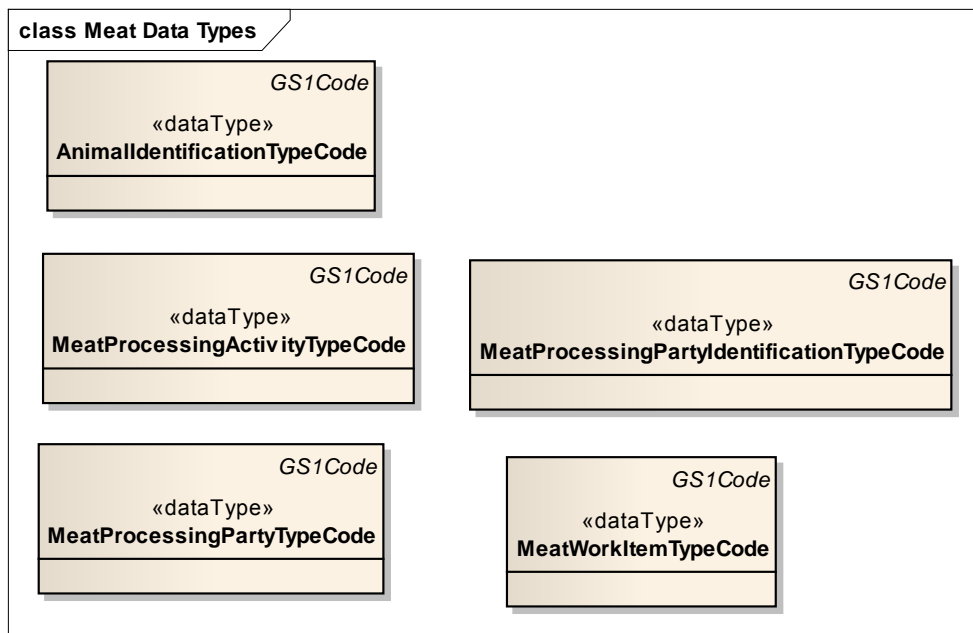
Content	Attribute / Role	Datatype / Secondary class	Multiplicity	Definition	Requirements
MeatBreedingDetails				Information on the breeding of the meat being processed.	
Association	breedingDNATest	MeatTest	0..1	DNA test used during breeding.	
Association	paternalIdentification	AnimalIdentification	0..1	Identification of the father of the animal.	
Association	maternalIdentification	AnimalIdentification	0..1	Identification of the mother of the animal.	
Attribute	animalTypeCode	Code	0..1	Code specifying the type of animal.	
Attribute	breedCode	Code	0..1	Code specifying the breed of the animal.	
Attribute	breedOfMotherCode	Code	0..1	Code specifying the breed of the mother.	
Attribute	breedOfFatherCode	Code	0..1	Code specifying the breed of the father.	
Attribute	crossBreedIndicator	boolean	0..1	Indicates an animal stemming from parents of different breeds, where the breed of only one parent is known.	renamed from crossBreedCode
Attribute	dateOfBirth	date	0..1	Birth date/time of the animal.	
Attribute	feedingSystemCode	Code	0..1	Code specifying the method of the feeding/fattening.	
Attribute	genderCode	GenderEnumeration	0..1	Code specifying the gender of the animal.	
Attribute	housingSystemCode	Code	0..1	Code specifying the type of housing/holding of the animal.	
MeatCuttingDetails				Information on the cutting of the meat being processed.	
Attribute	meatProfileCode	Code	1..1	Code specifying the cutting profile according to a specific and official quality system.	

Content	Attribute / Role	Datatype / Secondary class	Multiplicity	Definition	Requirements
MeatFatteningDetails				Specifies details regarding the method of the feeding/fattening (e.g., only milk, grass/hay, grass/hay and other plant products without performance increasing additives, grass/hay and other plant products with performance increasing additives).	
Attribute	feedingSystemCode	Code	0..1	Code specifying the method of the feeding/fattening.	
Attribute	housingSystemCode	Code	0..1	Code specifying the type of housing/holding of the animal.	
MeatAcidity				Contains details regarding the test and results of a meat's acid quality or condition.	
Attribute	acidityMeasurementTime	integer	0..1	Point in time when the pH-value is measured.	
Attribute	acidityOfMeat	float	0..1	The meat's acid quality or condition, expressed as a pH value.	
MeatMincingDetails				Provides details regarding the process of cutting meat into very small pieces using a meat grinder.	
Attribute	fatContentPercent	float	0..1	Numeric value specifying the percentage of fat content in the minced meat.	renamed from fatPercentOfMincedMeat
Attribute	mincingTypeCode	Code	0..1	Code specifying the type of mincing of the meat.	
MeatSlaughteringDetails				Information on the slaughtering of an animal as part of the meat processing process.	
Association		MeatAcidity	0..*	Information on the acidity of the meat.	
Association	slaughteringDNA test	MeatTest	0..1	DNA test used at slaughtering.	

Content	Attribute / Role	Datatype / Secondary class	Multiplicity	Definition	Requirements
Association	bseTest	MeatTest	0..1	BSE test is used to determine whether the animal has been tested or not.	
Attribute	meatProfileCode	Code	0..*	Code specifying the meat profile according to a specific and official quality system.	
Attribute	ageOfAnimal	nonNegativeInteger	0..1	Age of the animal, in months, on the day of its slaughter.	
Attribute	meatConformationCode	Code	0..1	Code specifying the quality of the meat at the carcass.	renamed from conformation
Attribute	dateOfSlaughtering	date	0..1	The date on which the animal was slaughtered.	
Attribute	fatContentPercent	float	0..1	An indication of the fat content percentage of the slaughtered animal.	renamed from fatContent
Attribute	fatCoverCode	Code	0..1	Code specifying the external fat thickness/level of the animal.	
Attribute	meatCategoryCode	Code	0..1	Classification of meat in terms of gender and or age of the animal from which it is derived.	renamed from categoryOfMeat
Attribute	meatColourCode	Code	0..1	Code specifying the colour of the meat.	renamed from colourOfMeat
Attribute	optimumMaturationDate	date	0..1	Date at which optimal maturity occurs.	
Attribute	slaughteringSystemCode	Code	0..1	Code specifying the tools, methods and practices used for the slaughter.	
Attribute	slaughteringWeight	Measurement	0..1	Warm weight after slaughter.	
MeatTest				Information on the test performed on the animal product.	
Attribute	testResult	string	1..1	Result of the test performed on the animal product.	
Attribute	testMethod	string	0..1	The nature of the test performed on the animal product.	

4.5. Data Types

Class Diagram



GDD Report

Content	Attribute / Role	Datatype / Secondary class	Multiplicity	Definition	Requirements
AnimalIdentificationTypeCode				Code specifying an animal identification type. Allowed code values are specified in GS1 Code List AnimalIdentificationTypeCode.	
Generalization		GS1Code			
MeatProcessingActivityTypeCode				Code specifying a meat processing activity type. Allowed code values are specified in GS1 Code List MeatProcessingActivityTypeCode.	

Content	Attribute / Role	Datatype / Secondary class	Multiplicity	Definition	Requirements
Generalization		GS1Code			
MeatProcessingPartyIdentificationTypeCode				Code specifying a meat processing party identification type. Allowed code values are specified in GS1 Code List MeatProcessingPartyIdentificationTypeCode.	
Generalization		GS1Code			
MeatProcessingPartyTypeCode				Code specifying a meat processing party type. Allowed code values are specified in GS1 Code List MeatProcessingPartyTypeCode.	
Generalization		GS1Code			
MeatWorkItemTypeCode				Code specifying a meat work item type. Allowed code values are specified in GS1 Code List MeatWorkItemTypeCode.	
Generalization		GS1Code			



Note: Reference Shared Common Library Business Message (BMS) Release 3.2.0 and eCom Domain Common Library Business Message (BMS) Release 3.2.0 for all common information.

4.6. Code Lists



Note: Refer to the Global Data Dictionary (GDD) for the code values.

Class	Codelist	Referenced in
MeatActivityHistory	MeatProcessingActivityTypeCode	http://apps.gs1.org/GDD/Pages/clDetails.aspx?semanticURN=urn:gs1:gdd:cl:MeatProcessingActivityTypeCode
MeatActivityHistory	CountryCode	http://apps.gs1.org/GDD/Pages/clDetails.aspx?semanticURN=urn:gs1:gdd:cl:CountryCode
AnimalIdentification	AnimalIdentificationTypeCode	http://apps.gs1.org/GDD/Pages/clDetails.aspx?semanticURN=urn:gs1:gdd:cl:AnimalIdentificationTypeCode
MeatProcessingParty	MeatProcessingPartyTypeCode	http://apps.gs1.org/GDD/Pages/clDetails.aspx?semanticURN=urn:gs1:gdd:cl:MeatProcessingPartyTypeCode
MeatProcessingParty	MeatProcessingPartyIdentificationTypeCode	http://apps.gs1.org/GDD/Pages/clDetails.aspx?semanticURN=urn:gs1:gdd:cl:MeatProcessingPartyIdentificationTypeCode
MeatWorkItemIdentification	MeatWorkItemTypeCode	http://apps.gs1.org/GDD/Pages/clDetails.aspx?semanticURN=urn:gs1:gdd:cl:MeatWorkItemTypeCode
MeatBreedingDetails	GenderEnumeration	http://apps.gs1.org/GDD/Pages/clDetails.aspx?semanticURN=urn:gs1:gdd:cl:GenderEnumeration

5. Business Message Examples

Origin and production history

Example A describes two different scenarios. Both scenarios are covered by this extension. The usage is strongly dependent on the specific business context. The business partners involved have to agree on one of the following scenarios.

In scenario 1 the business partner receives aggregated detailed information of the origin and processing history of each animal which is used for the meat product, e.g. animal ID of mother and father of each animal.

In scenario 2 the partner receives a limited set of information of the origin and processing history, e.g. country of birth for all the animals which are used for the respective meat product.

5.1. Example 1

This is an example of the eBmeat Line Item Extension to the Despatch Advice message, containing the **aggregated detailed origin and production history**.

Process step 1: Producer

Address of the producer:
Name: Producer company

Street: Backstreet 133
City: Brussels
Postal code: 12345
Country: Belgium

The following animals are born on the farm of the producer:

Animal ID	AU71244008	AU71244009	AU71244010
Date of birth	01.01.2004	02.01.2004	01.01.2004
Gender	male	male	male
Breed	Jersey	Jersey	Jersey
Country of birth	Belgium	Belgium	Belgium
Feeding system	organic	intensive organic	Intensiveorganic
Holding system	predominantly barn	predominantly barn	predominantly barn
Paternal Identification	AU71244111	AU71244112	AU71244113
Breed of father	Jersey	Jersey	Jersey
Maternal Identification	AU71244222	AU71244223	AU71244224
Breed of mother	Jersey	Jersey	Jersey
Reason for movement	sale for fattening	sale for fattening	sale for fattening
Date of departure	01.03.2004	01.03.2004	01.03.2004

Process step 2: Fattening farm 1

Address of the fattening farm 1:
Name: Fattening company
Street: Bigstreet 5
City: Amsterdam
Postal code: 34567
Country: Netherlands

Animal ID	AU71244008	AU71244009	AU71244010
Date of arrival	02.03.2004	02.03.2004	02.03.2004
Country of fattening	Netherlands	Netherlands	Netherlands
Feeding system	Not specified	Organic	Not specified
Holding system	predominantly pasture	predominantly pasture	predominantly pasture
Reason for movement	sale for fattening	sale for fattening	sale for fattening
Date of departure	01.06.2004	01.06.2004	01.06.2004

Process step 3: Fattening farm 2

Address of the fattening farm 2:
Name: Fettmann KG
Street: Kanalstraße 33
City: Köln

Postal code: 50825
Country: Germany

Animal ID	AU71244008	AU71244009	AU71244010
Date of arrival	02.06.2004	02.06.2004	02.06.2004
Country of fattening	Germany	Germany	Germany
Feeding system	Intensive	Intensive	Intensive
Holding system	predominantly pasture	predominantly pasture	predominantly pasture
Reason for movement	sale for slaughteringslaughtering	sale for slaughteringsale for slaughtering	sale for slaughteringsale for slaughtering
Date of departure	02.09.2004	02.09.2004	02.09.2004

Process step 4: slaughterhouse

A shipment of cows from the “Fattermanettmann company” is received September 93th, 2004. The slaughterhouse records the information regarding the rearing of each cattle or the data are stored in a central data base for the supply chain. The cows are slaughtered and each carcass is identified with the GTIN and ear-tag number of the cow it is derived from.

GLN of the slaughterhouse: 4012345000009
Slaughterhouse approval number: BE234

GTIN	40123450000166	40123450000166	40123450000166
Animal ID	AU71244008	AU71244009	AU71244010
Date of arrival	03.09.2004	03.09.2004	03.09.2004
Country of Slaughtering	Belgium	Belgium	Belgium
Date of slaughter	04.09.2004	04.09.2004	05.09.2004
Slaughtering weight	280,3 kg	285,7 kg	290,6 kg
Slaughter system	halal	kosher	Halal
Category (UN/ECE)	young intact male	heifer	Young intact male
Conformation (SEUROP)	SE	S	E
Fat cover (UN/ECE)	Not specified	Peeled Denuded	Not specified
Reason for movement	Sale for cutting	Sale for cutting	Sale for cutting
Date of departure	05.09.2004	05.09.2004	05.09.2004

The slaughterhouse prepares a shipment identified with number “BE59-351-6098” on September 5th, under trading partner agreement “BE59.BEF2-CT-2”, to the cutting plant with the GLN 4000005000070; the shipment consists of the carcasses of the received and slaughtered cows.

The message sent from the slaughterhouse to the cutting hall 1 contains the following information (related to the product respectively GTIN):

Trade Item Identification	Animal Identification
------------------------------	--------------------------

GTIN	Animal ID	Meat history information (origin and processing history)	
40123450000166	AU71244008	Activity History	
		Current step identification	1
		Next step identification	2
		Activity Type:	Breeding
		Activity Step	
		Country of activity	Belgium
		Performer Type	Breeder
		Performer Identification:	Name: Producer company Street: Backstreet 133 City: Brussels Postal code: 12345 Country: Belgium
		Date of departure	01.03.2004
		Reason for movement	sale for fattening
		Work Item Identification	
		Animal Id	AU71244008
		Work Item Type	Animal
		Meat Despatch Information	
		Breeding Details	
		Date of birth	01.01.2004
		Gender	male
		Breed	Jersey
		Feeding system	organic
		Holding system	predominantly barn
		Paternal Identification	AU71244111
		Breed of father	Jersey
		Maternal Identification	AU71244222
		Breed of mother	Jersey
		Activity History	
		Current step identification	2
		Next step identification	3
		Activity Type:	Fattening
		Activity Step	1
		Country of activity	Netherlands
		Performer Type	Fattener
		Performer Identification:	Name: Fattening company Street: Bigstreet 5 City: Amsterdam Postal code: 34567 Country: Netherlands
		Date of arrival	02.03.2004
		Date of departure	01.06.2004
		Reason for movement	sale for fattening
		Work Item Identification	
		AnimalID	AU71244008
		Work Item Type	Animal
		Meat Despatch Information	
		Fattening	
		Feeding system	Not specified
		Holding system	predominantly pasture
		Activity History	
		Current step identification	3
		Next step identification	4
		Activity Type:	Fattening
		Activity Step	2
		Country of activity	Germany
		Performer Type	Fattener
		Performer Identification:	Name: Fettmann KG Street: Kanalstraße 33

		City: Köln
		Postal code: 50825
		Country: Germany
Date of arrival		02.06.2004
Date of departure		02.09.2004
Reason for movement		sale for slaughtering
Work Item Identification		
Animal ID	AU71244008	
Work Item Type	Animal	
		Meat Despatch Information
		Fattening
		Feeding system Intensive
		Holding system predominantly pasture
Activity History		
Current step identification		4
Next Stage Id		
Activity Type:		Slaughtering
Activity Step		
Country of activity		Belgium
Performer Type		Slaughterer
Performer Identification:		GLN: 4012345000009
		ApprovalNumber:BE234
Date of arrival		03.09.2004
Date of departure		05.09.2004
Reason for movement		sale for cutting
Work Item Identification		
GTIN	40123450000166	
Animal ID	AU71244008	
Work Item Type	Carcass	
4012345000016	AU71244008	
		Meat Despatch Information
		slaughteringDetailsSlaughtering
		Date of slaughter 04.09.2004
		Slaughtering weight 280,3 kg
		Slaughter system halal
		Category (UN/ECE) young intact male
		Conformation (SEUROP) SE
		Fat cover (UN/ECE) Not specified
Trade Item Identification	Item Sub Identification	
GTIN	Animal ID	
40123450000166	AU71244009	Meat history information (origin and processing history)
.....		

Process step 5: Cutting plant 1

A shipment of carcasses from slaughterhouse with the GLN 4012345000009 is received by the cutting plant 1 identified with GLN 4000005000070 (cutting plant approval number: FR2345) on September 5th, 2004. Two of the carcasses are converted into a batch of primal cuts (product A). Product A is identified with GTIN 4000005009998 and batch number FR2-NB-1523 and consists of the carcasses with the ID's:

- GTIN 40123450000166 / Animal ID AU71244008
- GTIN 40123450000166 / Animal ID AU71244010.

The third carcass is converted into a different product (product B). Product B is identified with GTIN 4000005001114 and batch number FR2-ZZ-9999 and consists of the carcass with the ID:

- GTIN 40123450000166 / Animal ID AU71244009

Product	A	B
GTIN	40000050099988	40000050011144
Batch number	FR2-NB-1523	FR2-ZZ-9999
Date of arrival	05.09.2004	05.09.2004
Country of cutting	France	France
UN/ECE classification	1164353010400015000	
Date of departure	07.09.2004	07.09.2004

A shipment to cutting hall 2 is prepared on September 7th, 2004 and consists of the products derived from the received carcasses.

The message sent from cutting plant 1 to cutting plant 2 contains the following information (related to the product respectively GTIN):

TradeItem Identification	ItemSub Identification		
GTIN	Additional ID		
40000050099988	FR2-NB-1523	Meat history information (origin and processing history)	
		Activity History	
		Current step identification	1
		Next step identification	2
		Activity Type:	Breeding
		Activity Step	
		Country of activity	Belgium
		Performer Type	Breeder
		Performer Identification:	Name: Producer company
			Street: Backstreet 133
			City: Brussels
			Postal code: 12345
			Country: Belgium
		Date of departure	01.03.2004
		Reason for movement	sale for fattening
		Work Item Identification	
		Animal ID	AU71244008
		Work Item Type	Animal
		Meat Despatch Information	
		Breeding	
		Date of birth	01.01.2004
		Gender	male
		Breed	Jersey
		Feeding system	organic
		Holding system	predominantly barn
		Paternal Identification	AU71244111
		Breed of father	Jersey
		Maternal Identification	AU71244222
		Breed of mother	Jersey
		Work Item Identification	
		Animal ID	AU71244010
		Work Item Type	Animal
		Meat Despatch Information	
		Breeding	
		Date of birth	01.01.2004
		Gender	male
		Breed	Jersey
		Feeding system	organic
		Holding system	predominantly barn
		Paternal Identification	AU71244113

	Breed of father	Jersey
	Maternal Identification	AU71244224
	Breed of mother	Jersey
Activity History		
	Current step identification	2
	Next step identification	3
	Activity Type:	Fattening
	Activity Step	1
	Country of activity	Netherlands
	Performer Type	Fattener
	Performer Identification:	Name: Fattening company Street: Bigstreet 5 City: Amsterdam Postal code: 34567 Country: Netherlands
	Date of arrival	02.03.2004
	Date of departure	01.06.2004
	Reason for movement	sale for fattening
Work Item Identification		
	Animal ID	AU71244008
	Work Item Type	Animal
Meat Despatch Information		
Fattening Details		
	Feeding system	Not specified
	Holding system	predominantly pasture
Work Item Identification		
	Animal ID	AU71244010
	Work Item Type	Animal
Meat Despatch Information		
Fattening Details		
	Feeding system	Not specified
	Holding system	predominantly pasture
Activity History		
	Current step identification	3
	Next step identification	4
	Activity Type:	Fattening
	Activity Step	2
	Country of activity	Germany
	Performer Type	Fattener
	Performer Identification:	Name: Fettmann KG Street: Kanalstraße 33 City: Köln Postal code: 50825 Country: Germany
	Date of arrival	02.06.2004
	Date of departure	02.09.2004
	Reason for movement	sale for slaughtering
Work Item Identification		
	Animal ID	AU71244008
	Work Item Type	Animal
Meat Despatch Information		
Fattening Details		
	Feeding system	Intensive
	Holding system	predominantly pasture
Work Item Identification		
	Animal ID	AU71244010
	Work Item Type	Animal
Meat Despatch Information		
Fattening Details		
	Feeding system	Intensive
	Holding system	predominantly pasture
Activity History		
	Current step identification	4

Next step identification 5
 Activity Type: Slaughtering
 Activity Step
 Country of activity Belgium
 Performer Type Slaughterer
 Performer Identification: GLN: 4012345000009
 ApprovalNumber:BE234
 Date of arrival 03.09.2004
 Date of departure 05.09.2004
 Reason for movement sale for cutting

Work Item Identification
 GTIN 40123450000166
 Animal ID AU71244008
 Work Item Type Carcass

Meat Despatch Information

Slaughtering Details

Date of slaughter 04.09.2004
 Slaughtering weight 280,3 kg
 Slaughter system halal
 Category (UN/ECE) young intact male
 Conformation E
 (SEUROP)
 Fat cover (UN/ECE) Not specified

Work Item Identification
 GTIN 40123450000166
 Animal ID AU71244010
 Work Item Type Carcass

Meat Despatch Information

Slaughtering Details

Date of slaughter 04.09.2004
 Slaughtering weight 290,6 kg
 Slaughter system halal
 Category (UN/ECE) Young intact male
 Conformation E
 (SEUROP)
 Fat cover (UN/ECE) Not specified

Activity History

Current step identification 5
 Next step identification
 Activity Type: Cutting
 Activity Step 1
 Country of activity France
 Performer Type Cutter
 Performer Identification: GLN: 4000005000070
 Approval Number: FR2345
 Date of arrival 05.09.2004
 Date of departure 07.09.2004

Work Item Identification
 GTIN 4000005009998
 Batch Number FR2-NB-1523
 Work Item Type Meat

Meat Despatch Information

Cutting Details

UN/ECE classification 1164353010400015000

GTIN	Additional ID
40000050011144	FR2-ZZ-9999

Meat history information (origin and processing history)

.....

Process step 6: Cutting plant 2

A shipment of 2 products of primal cuts from cutting plant 1 is received by the cutting hall 2 identified with GLN 4400999000016 (approval number of cutting hall DK98767) on September 8th, 2004.

Each batch is processed separately and converted into a single batch of secondary cuts.

Product A (GTIN 4000005009998 / batch number FR2-NB-1523) is converted in product C identified with GTIN 44009990009933 and batch number DK3296.

Product B (GTIN 4000005001114 / batch number FR2-ZZ-9999) is converted in product D GTIN 44009990004433 and batch number "DK9999".

Product	C	D
GTIN	44009990009933	44009990004433
Batch number	DK3296	DK9999
Date of arrival	08.09.2004	08.09.2004
Country of cutting	Denmark	Denmark
UN/ECE classification	1164353010400017999	
Date of departure	10.09.2004	10.09.2004

A shipment to the mincer consisting of the two products is prepared on September 10th, 2004.

The message sent from cutting plant 2 to the mincer contains the following information (related to the product respectively GTIN):

Trade Item Identification	Item Sub Identification		
GTIN	Additional ID		
44009990009933	DK3296	Meat history information (origin and processing history)	
		Activity History	
		Current step identification	1
		Next step identification	2
		Activity Type:	Breeding
		Activity Step	
		Country of activity	Belgium
		Performer Type	Breeder
		Performer Identification:	Name: Producer company Street: Backstreet 133 City: Brussels Postal code: 12345 Country: Belgium
		Date of departure	01.03.2004
		Reason for movement	sale for fattening
		Work Item Identification	
		Animal ID	AU71244008
		Work Item Type	Animal
		Meat Despatch Information	
		Breeding Details	
		Date of birth	01.01.2004
		Gender	male
		Breed	Jersey
		Feeding system	organic
		Holding system	predominantly barn
		Paternal Identification	AU71244111
		Breed of father	Jersey
		Maternal Identification	AU71244222
		Breed of mother	Jersey
		Work Item Identification	
		Animal ID	AU71244010

Work Item Type Animal		Meat Despatch Information	
		Breeding Details	
		Date of birth	01.01.2004
		Gender	male
		Breed	Jersey
		Feeding system	organic
		Holding system	predominantly barn
		Paternal Identification	AU71244113
		Breed of father	Jersey
		Maternal Identification	AU71244224
		Breed of mother	Jersey
Activity History			
		Current step identification	2
		Next step identification	3
		Activity Type:	Fattening
		Activity Step	1
		Country of activity	Netherlands
		Performer Type	Fattener
		Performer Identification:	Name: Fattening company
			Street: Bigstreet 5
			City: Amsterdam
			Postal code: 34567
			Country: Netherlands
		Date of arrival	02.03.2004
		Date of departure	01.06.2004
		Reason for movement	sale for fattening
Work Item Identification			
		Animal ID	AU71244008
Work Item Type Animal		Meat Despatch Information	
		fatteningDetails	
		Feeding system	Not specified
		Holding system	predominantly pasture
Work Item Identification			
		Animal ID	AU71244010
Work Item Type Animal		Meat Despatch Information	
		Fattening Details	
		Feeding system	Not specified
		Holding system	predominantly pasture
Activity History			
		Current step identification	3
		Next step identification	4
		Activity Type:	Fattening
		Activity Step	2
		Country of activity	Germany
		Performer Type	Fattener
		Performer Identification:	Name: Fettmann KG
			Street: Kanalstraße 33
			City: Köln
			Postal code: 50825
			Country: Germany
		Date of arrival	02.06.2004
		Date of departure	02.09.2004
		Reason for movement	sale for slaughtering
WorkItemIdentification			
		Animal ID	AU71244008
Work Item Type Animal		Meat Despatch Information	
		Fattening Details	
		Feeding system	Intensive
		Holding system	predominantly pasture

Work Item Identification Animal ID AU71244010 Work tem Type Animal		Meat Despatch Information Fattening Details Feeding system Intensive Holding system predominantly pasture	
Activity History Current step identification 4 Next step identification 5 Activity Type: Slaughtering Activity Step Country of activity Belgium Performer Type Slaughterer Performer Identification: GLN: 4012345000009 ApprovalNumber:BE234 Date of arrival 03.09.2004 Date of departure 05.09.2004 Reason for movement sale for cutting			
Work Item Identification GTIN 40123450000166 Animal ID AU71244008 Work Item Type Carcass		Meat Despatch Information Slaughtering Details Date of slaughter 04.09.2004 Slaughtering weight 280,3 kg Slaughter system halal Category (UN/ECE) young intact male Conformation (SEUROP) E Fat cover (UN/ECE) Not specified	
Work Item Identification GTIN 40123450000166 Animal ID AU71244010 Work tem Type Carcass		Meat Despatch Information Slaughtering Details Country of Slaughtering Belgium Date of slaughter 04.09.2004 Slaughtering weight 290,6 kg Slaughter system halal Category (UN/ECE) Young intact male Conformation (SEUROP) E Fat cover (UN/ECE) Not specified	
Activity History Current step identification 5 Next step identification 6 Activity Type: Cutting Activity Step 1 Country of activity Belgium Performer Type Cutter Performer Identification: GLN: 4000005000070 Approval Number: FR2345 Date of arrival 05.09.2004 Date of departure 07.09.2004			
Work Item Identification GTIN 40000050099988 Batch Number FR2-NB-1523 Work tem Type Meat		Meat Despatch Information	

Cutting Details	
UN/ECE classification	1164353010400015000
Activity History	
Current step identification	6
Next step identification	
Activity Type:	Cutting
Activity Step	2
Performer Type	Cutter
Performer Identification:	GLN: 4400999000016
	Approval Number: DK98767
Date of arrival	08.09.2004
Date of departure	10.09.2004
Work Item Identification	
GTIN	44009990009933
Batch Number	DK3296
Work item Type	Meat
Meat Despatch Information	
Cutting Details	
UN/ECE classification	1164353010400017999
GTIN	Additional ID
4400999000443	DK9999
Meat history information (origin and processing history)	
.....	

Process step 6: Mincer

A shipment of 2 products of secondary cuts from cutting plant 2 is received by the mincer identified with GLN 4055555999992 on September 12th, 2004.

Product C identified with GTIN 44009990009933 and batch number DK3296 is converted into minced beef identified with GTIN 4055555000568 and batch number NL1232.

GTIN	40555550005688
Batch number	NL1232
Date of arrival	12.09.2004
Fat content	40 %
Country of cutting	Netherlands
Date of departure	13.09.2004

The message sent from the mincer to the retailer contains the following information (related to the product respectively GTIN):

Trade Item Identification	Item Sub Identification	Meat history information (origin and processing history)
GTIN	Additional ID	
40555550005688	NL1232	
Activity History		
Current step identification	1	
Next step identification	2	
Activity Type:	Breeding	
Activity Step		
Country of activity	Belgium	
Performer Type	Breeder	

Performer Identification: Name: Producer company
 Street: Backstreet 133
 City: Brussels
 Postal code: 12345
 Country: Belgium
 Date of departure 01.03.2004
 Reason for movement sale for fattening

Work Item Identification

Animal ID AU712440
08

Work Item Type Animal

Meat Despatch Information

Breeding Details

Date of birth 01.01.2004
 Gender male
 Breed Jersey
 Feeding system organic
 Holding system predominantly barn
 Paternal Identification AU71244111
 Breed of father Jersey
 Maternal Identification AU71244222
 Breed of mother Jersey

Work Item Identification

Animal ID AU712440
10

Work Item Type Animal

Meat Despatch Information

breedingDetails

Date of birth 01.01.2004
 Gender male
 Breed Jersey
 Feeding system organic
 Holding system predominantly barn
 Paternal Identification AU71244113
 Breed of father Jersey
 Maternal Identification AU71244224
 Breed of mother Jersey

Activity History

Current step identification 2
 Next step identification 3
 Activity Type: Fattening
 Activity Step 1
 Country of activity Netherlands
 Performer Type Fattener
 Performer Identification: Name: Fattening company
 Street: Bigstreet 5
 City: Amsterdam
 Postal code: 34567
 Country: Netherlands
 Date of arrival 02.03.2004
 Date of departure 01.06.2004
 Reason for movement sale for fattening

Work Item Identification

Animal ID AU712440
08

Work Item Type		Animal	Meat Despatch Information	
			Fattening Details	
			Feeding system	Not specified
			Holding system	predominantly pasture
Work Item Identification				
Animal ID	AU712440			
	10			
Work tem Type	Animal		Meat Despatch Information	
			Fattening Details	
			Feeding system	Not specified
			Holding system	predominantly pasture
Activity History				
Current step identification			3	
Next step identification			4	
Activity Type:			Fattening	
Activity Step			2	
Country of activity			Germany	
Performer Type			Fattener	
Performer Identification:			Name: Fettmann KG	
			Street: Kanalstraße 33	
			City: Köln	
			Postal code: 50825	
			Country: Germany	
Date of arrival			02.06.2004	
Date of departure			02.09.2004	
Reason for movement			sale for slaughtering	
Work Item Identification				
Animal ID	AU712440			
	08			
Work tem Type	Animal		Meat Despatch Information	
			Fattening Details	
			Country of fattening	Germany
			Feeding system	Intensive
			Holding system	predominantly pasture
Work Item Identification				
Animal ID	AU712440			
	10			
Work tem Type	Animal		Meat Despatch Information	
			Fattening Details	
			Country of fattening	Germany
			Feeding system	Intensive
			Holding system	predominantly pasture
Activity History				
Current step identification			4	
Next step identification			5	
Activity Type:			Slaughtering	
Activity Step				
Country of activity			Belgium	
Performer Type			Slaughterer	

Performer Identification: GLN: 4012345000009
 ApprovalNumber: BE234
 Date of arrival 03.09.2004
 Date of departure 05.09.2004
 Reason for movement sale for cutting

Work Item Identification

GTIN 401234500
 00166
 Animal AU712440
 ID 08
 Work tem Carcass
 Type

Meat Despatch Information

Slaughtering Details

Date of slaughter 04.09.2004
 Slaughtering weight 280,3 kg
 Slaughter system halal
 Category (UN/ECE) young intact male
 Conformation (SEUROP) E
 Fat cover (UN/ECE) Not specified

Work Item Identification

GTIN 401234500
 00166
 Animal AU712440
 ID 10
 Work tem Carcass
 Type

Meat Despatch Information

Slaughtering Details

Country of Slaughtering Belgium
 Date of slaughter 04.09.2004
 Slaughtering weight 290,6 kg
 Slaughter system halal
 Category (UN/ECE) Young intact male
 Conformation (SEUROP) E
 Fat cover (UN/ECE) Not specified

ActivityHistory

Current step identification 5
 Next step identification 6
 Activity Type: Cutting
 Activity Step 1
 Country of activity Belgium
 Performer Type Cutter
 Performer Identification: GLN: 4000005000070
 Approval Number: FR2345
 Date of arrival 05.09.2004
 Date of departure 07.09.2004

Work Item Identification

GTIN 400000500
 99988
 Batch FR2-NB-
 Number 1523
 Work tem Meat
 Type

Meat Despatch Information

Cutting Details	
UN/ECE classification	11643530104000 15000
Activity History	
Current step identification	6
Next step identification	7
Activity Type:	Cutting
Activity Step	2
Country of activity	Denmark
Performer Type	Cutter
Performer Identification:	GLN: 4400999000016 Approval Number: DK98767
Date of arrival	08.09.2004
Date of departure	10.09.2004
Work Item Identification	
GTIN	440099900 09933
Batch Number	DK3296
Work item Type	Meat
Meat Despatch Information	
Cutting Details	
UN/ECE classification	11643530104000 17999
Activity History	
Current step identification	7
Next step identification	
Activity Type:	Mincing
Activity Step	1
Country of activity	Netherlands
Performer Type	Mincer
Performer Identification:	GLN: 4055555999992
Date of arrival	12.09.2004
Date of departure	13.09.2004
Work Item Identification	
GTIN	405555500 05688
Batch Number	NL1232
Work item Type	Trade Item
Meat Despatch Information	
Mincing Details	
Fat content	40 %

Process step 7: Retailer

A shipment of one batch of consumer units from the mincer is received September 30th, 2004.

The batch is made available for sale at a retail outlet October 1st, 2004.

5.2. Example 2

This is an example of the eBmeat Line Item Extension to the Despatch Advice message, containing the **restricted origin and production history**.

Process step 1: Producer

Address of the producer:
Name: Producer company
Street: Backstreet 133
City: Brussels
Postal code: 12345
Country: Belgium

The following animals are born on the farm of the producer:

Animal ID	AU71244008	AU71244009	AU71244010
Date of birth	01.01.2004	02.01.2004	01.01.2004
Gender	male	male	male
Breed	Jersey	Jersey	Jersey
Country of birth	Belgium	Belgium	Belgium
Feeding system	organic	intensive	organic
Holding system	predominantly barn	predominantly barn	predominantly barn
Paternal Identification	AU71244111	AU71244112	AU71244113
Breed of father	Jersey	Jersey	Jersey
Maternal Identification	AU71244222	AU71244223	AU71244224
Breed of mother	Jersey	Jersey	Jersey
Reason for movement	sale for fattening	sale for fattening	sale for fattening
Date of departure	01.03.2004	01.03.2004	01.03.2004

Process step 2: Fattening farm 1

Address of the fattening farm 1:
Name: Fattening company
Street: Bigstreet 5
City: Amsterdam
Postal code: 34567
Country: Netherlands

Animal ID	AU71244008	AU71244009	AU71244010
Date of arrival	02.03.2004	02.03.2004	02.03.2004
Country of fattening	Netherlands	Netherlands	Netherlands
Feeding system	Not specified	Organic	Not specified
Holding system	predominantly pasture	predominantly pasture	predominantly pasture
Reason for movement	sale for fattening	sale for fattening	sale for fattening
Date of departure	01.06.2004	01.06.2004	01.06.2004

Process step 3: Fattening farm 2

Address of the fattening farm 2:

Name: Fettmann KG

Street: Kanalstraße 33

City: Köln

Postal code: 50825

Country: Germany

Animal ID	AU71244008	AU71244009	AU71244010
Date of arrival	02.06.2004	02.06.2004	02.06.2004
Country of fattening	Germany	Germany	Germany
Feeding system	Intensive	Intensive	Intensive
Holding system	predominantly pasture	predominantly pasture	predominantly pasture
Reason for movement	sale for slaughtering	sale for slaughtering	sale for slaughtering
Date of departure	02.09.2004	02.09.2004	02.09.2004

Process step 4: slaughterhouse

A shipment of cows from the “Fettmann company” is received September 3th, 2004. The the information regarding the rearing of each cattle are stored in a data base. The cows are slaughtered and each carcass is identified with the GTIN and ear-tag number of the cow it is derived from.

GLN of the slaughterhouse: 4012345000009

Slaughterhouse approval number: BE234

GTIN	40123450000166	40123450000166	40123450000166
Animal ID	AU71244008	AU71244009	AU71244010
Date of arrival	03.09.2004	03.09.2004	03.09.2004
Country of Slaughtering	Belgium	Belgium	Belgium
Date of slaughter	04.09.2004	04.09.2004	05.09.2004
Slaughtering weight	280,3 kg	285,7 kg	290,6 kg
Slaughter system	halal	kosher	Halal
Category (UN/ECE)	young intact male	heifer	Young intact male
Conformation (SEUROP)	E	S	E
Fat cover (UN/ECE)	Not specified	Peeled Denuded	Not specified
Reason for movement	Sale for cutting	Sale for cutting	Sale for cutting
Date of departure	05.09.2004	05.09.2004	05.09.2004

The slaughterhouse prepares a shipment identified with number “BE59-351-6098” on September 5th, under trading partner agreement “BEF2-CT-2”, to the cutting plant with the GLN 4000005000070; the shipment consists of the carcasses of the received and slaughtered cows.

The message sent from the slaughterhouse to cutting plant 1 contains the following information (related to the product respectively GTIN):

Trade Item Identification	Animal Identification
GTIN	AnimalID
40123450000166	AU71244008
Meat history information (origin and processing history)	
Activity History	
Current step identification	1
Next step identification	2
Activity Type:	Breeding
Activity Step	
Country of activity	Belgium
Performer Type	Breeder
Performer Identification:	Name: Producer company Street: Backstreet 133 City: Brussels Postal code: 12345 Country: Belgium
Date of departure	01.03.2004
Reason for movement	sale for fattening
Meat Despatch Information	
Breeding Details	
Date of birth	01.01.2004
Gender	male
Breed	Jersey
Feeding system	organic
Holding system	predominantly barn
Paternal Identification	AU71244111
Breed of father	Jersey
Maternal Identification	AU71244222
Breed of mother	Jersey
Activity History	
Current step identification	2
Next Stage Id	3
Activity Type:	Fattening
Activity Step	1
Country of activity	Netherlands
Performer Type	Fattener
Performer Identification:	Name: Fattening company Street: Bigstreet 5 City: Amsterdam Postal code: 34567 Country: Netherlands
Date of arrival	02.03.2004
Date of departure	01.06.2004
Reason for movement	sale for fattening
Meat Despatch Information	
fattening Details	
Feeding system	Not specified
Holding system	predominantly pasture
Activity History	
Current step identification	3
Next step identification	4
Activity Type:	Fattening
Activity Step	2
Country of activity	Germany
Performer Type	Fattener

Performer Identification: Name: Fettmann KG
 Street: Kanalstraße 33
 City: Köln
 Postal code: 50825
 Country: Germany
 Date of arrival 02.06.2004
 Date of departure 02.09.2004
 Reason for movement sale for slaughtering

Meat Despatch Information fattening Details

Feeding system	Intensive
Holding system	predominantly pasture

ActivityHistory

Current step identification 4
 Next Stages Id
 Activity Type: Slaughtering
 Activity Step
 Country of activity Belgium
 Performer Type Slaughterer
 Performer Identification: GLN: 4012345000009
 ApprovalNumber:BE234
 Date of arrival 03.09.2004
 Date of departure 05.09.2004
 Reason for movement sale for cutting

Meat Despatch Information Slaughtering Details

Date of slaughter	04.09.2004
Slaughtering weight	280,3 kg
Slaughter system	halal
Category (UN/ECE)	young intact male
Conformation (SEUROP)	E
Fat cover (UN/ECE)	Not specified

Trade Item Identification	Item Sub Identification
GTIN	Animal ID
4012345000016	AU71244009

Meat history information (origin and processing history)

.....

Process step 5: Cutting plant 1

A shipment of carcasses from slaughterhouse with the GLN 4012345000009 is received by the cutting plant 1 identified with GLN 4000005000070 (cutting plant approval number: FR2345) on September 5th, 2004. Two of the carcasses are converted into a batch of primal cuts (product A). Product A is identified with GTIN 4000005009998 and batch number FR2-NB-1523 and consists of the carcasses with the ID's:

- GTIN 40123450000166 / Animal ID AU71244008
- GTIN 40123450000166 / Animal ID AU71244010.

The third carcass is converted into a different product (product B). Product B is identified with GTIN 4000005001114 and batch number FR2-ZZ-9999 and consists of the carcass with the ID:

- GTIN 40123450000166 / Animal ID AU71244009

Product	A	B
GTIN	4000005009998	4000005001114

Batch number	FR2-NB-1523	FR2-ZZ-9999
Date of arrival	05.09.2004	05.09.2004
Country of cutting	France	France
UN/ECE classification	1164353010400015000	
Date of departure	07.09.2004	07.09.2004

A shipment to cutting hall 2 is prepared on September 7th, 2004 and consists the products derived from the received carcasses.

The message sent from cutting plant 1 to cutting plant 2 contains the following information (related to the product respectively GTIN):

TradeItem Identification GTIN	ItemSub Identification Additional ID		
40000050099988	FR2-NB-1523	Meat history information (origin and processing history)	
		Activity History	
		Current step identification	1
		Next step identification	2
		Activity Type:	Breeding
		Activity Step	
		Country of activity	Belgium
		Performer Type	Breeder
		Performer Identification:	Name: Producer company Street: Backstreet 133 City: Brussels Postal code: 12345 Country: Belgium
		Date of arrival	
		Date of departure	01.03.2004
		Reason for movement	sale for fattening
		Meat Despatch Information	
		Breeding Details	
		Gender	male
		Breed	Jersey
		Feeding system	organic
		Holding system	predominantly barn
		Breed of father	Jersey
		Breed of mother	Jersey
		Activity History	
		Current step identification	2
		Next step identification	3
		Activity Type:	Fattening
		Activity Step	1
		Country of activity	Netherlands
		Performer Type	Fattener
		Performer Identification:	Name: Fattening company Street: Bigstreet 5 City: Amsterdam Postal code: 34567 Country: Netherlands
		Date of arrival	02.03.2004
		Date of departure	01.06.2004
		Reason for movement	sale for fattening
		Meat Despatch Information	
		Fattening Details	
		Feeding system	Not specified

Activity History		Holding system	predominantly pasture
Current step identification		3	
Next step identification		4	
Activity Type:		Fattening	
Activity Step		2	
Country of activity		Germany	
Performer Type		Fattener	
Performer Identification:		Name: Fettmann KG	
		Street: Kanalstraße 33	
		City: Köln	
		Postal code: 50825	
		Country: Germany	
Date of arrival		02.06.2004	
Date of departure		02.09.2004	
Reason for movement		sale for slaughtering	
		Meat Despatch Information	
		Fattening Details	
		Feeding system	Intensive
		Holding system	predominantly pasture
Activity History			
Current step identification		4	
Next step identification		5	
Activity Type:		Slaughtering	
Activity Step			
Country of activity		Belgium	
Performer Type		Slaughterer	
Performer Identification:		GLN: 4012345000009	
		ApprovalNumber:BE234	
Date of arrival		03.09.2004	
Date of departure		05.09.2004	
Reason for movement		sale for cutting	
		Meat Despatch Information	
		Slaughtering Details	
		Date of slaughter	04.09.2004
		Slaughter system	halal
		Category (UN/ECE)	young intact male
		Conformation (SEUROP)	E
		Fat cover (UN/ECE)	Not specified
Activity History			
Current step identification		5	
Next step identification			
Activity Type:		Cutting	
Activity Step		1	
Country of activity		France	
Performer Type		Cutter	
Performer Identification:		GLN: 4000005000070	
		Approval Number: FR2345	
Date of arrival		05.09.2004	
Date of departure		07.09.2004	
Work tem Type	Meat	Meat Despatch Information	
		Cutting Details	
		UN/ECE classification	1164353010400015000
GTIN	Additional ID		
40000050011144	FR2-ZZ-9999	Meat history information (origin and processing history)	

.....

Process step 6: Cutting plant 2

A shipment of 2 products of primal cuts from cutting plant 1 is received by the cutting hall 2 identified with GLN 4400999000016 (approval number of cutting hall DK98767) on September 8th, 2004.

Each batch is processed separately and converted into a single batch of secondary cuts.

Product A (GTIN 40000050099988 / batch number FR2-NB-1523) is converted in product C identified with GTIN 44009990009933 and batch number DK3296.

Product B (GTIN 4000005001114 / batch number FR2-ZZ-9999) is converted in product D GTIN 4400999000443 and batch number "DK9999".

Product	C	D
GTIN	44009990009933	44009990004433
Batch number	DK3296	DK9999
Date of arrival	08.09.2004	08.09.2004
Country of cutting	Denmark	Denmark
Date of departure	10.09.2004	10.09.2004

A shipment to the mincer consisting of the two products is prepared on September 10th, 2004.

The message sent from cutting plant 2 to the mincer contains the following information (related to the product respectively GTIN):

TradeItem Identification	ItemSub Identification		
GTIN	Additional ID		
44009990009933	DK3296	Meat history information (origin and processing history)	
		Activity History	
		Current step identification	1
		Next step identification	2
		Activity Type:	Breeding
		Activity Step	
		Country of activity	Belgium
		Performer Type	Breeder
		Performer Identification:	Name: Producer company
			Street: Backstreet 133
			City: Brussels
			Postal code: 12345
			Country: Belgium
		Date of departure	01.03.2004
		Reason for movement	sale for fattening
		Meat Despatch Information	
		breedingDetails	
		Date of birth	01.01.2004
		Gender	male
		Breed	Jersey
		Feeding system	organic
		Holding system	predominantly barn
		Breed of father	Jersey
		Breed of mother	Jersey
		Activity History	
		Current step identification	2
		Next step identification	3

Activity Type: Fattening
 Activity Step 1
 Country of activity Netherlands
 Performer Type Fattener
 Performer Identification: Name: Fattening company
 Street: Bigstreet 5
 City: Amsterdam
 Postal code: 34567
 Country: Netherlands
 Date of arrival 02.03.2004
 Date of departure 01.06.2004
 Reason for movement sale for fattening

Meat Despatch Information

Fattening Details

Feeding system	Not specified
Holding system	predominantly pasture

Activity History

Current step identification 3
 Next step identification 4
 Activity Type: Fattening
 Activity Step 2
 Country of activity Germany
 Performer Type Fattener
 Performer Identification: Name: Fettmann KG
 Street: Kanalstraße 33
 City: Köln
 Postal code: 50825
 Country: Germany
 Date of arrival 02.06.2004
 Date of departure 02.09.2004
 Reason for movement sale for slaughtering

Meat Despatch Information

Fattening Details

Country of fattening	Germany
Feeding system	Intensive
Holding system	predominantly pasture

Activity History

Current step identification 4
 Next step identification 5
 Activity Type: Slaughtering
 Activity Step
 Country of activity Belgium
 Performer Type Slaughterer
 Performer Identification: GLN: 4012345000009
 ApprovalNumber: BE234
 Date of arrival 03.09.2004
 Date of departure 05.09.2004
 Reason for movement sale for cutting

Meat Despatch Information

Slaughtering Details

Date of slaughter	04.09.2004
Slaughter system	halal
Category (UN/ECE)	young intact male
Conformation (SEUROP)	E
Fat cover (UN/ECE)	Not specified

Activity History

Current step identification 5
 Next step identification 6

Activity Type: Cutting
 Activity Step 1
 Country of activity France
 Performer Type Cutter
 Performer Identification: GLN: 4000005000070
 Approval Number: FR2345
 Date of arrival 05.09.2004
 Date of departure 07.09.2004

Meat Despatch Information

Cutting Details

UN/ECE classification 1164353010400015000

ActivityHistory

Current step identification 6
 Next step identification
 Activity Type: Cutting
 Activity Step 2
 Performer Type Cutter
 Performer Identification: GLN: 4400999000016
 Approval Number: DK98767
 Date of arrival 08.09.2004
 Date of departure 10.09.2004

Meat Despatch Information

Cutting Details

UN/ECE classification 1164353010400017999

GTIN Additional ID

44009990004433 DK9999

Meat history information (origin and processing history)

.....

Process step 6: Mincer

A shipment of 2 products of secondary cuts from cutting plant 2 is received by the mincer identified with GLN 4055555999992 on September 12th, 2004.

Product C identified with GTIN 44009990009933 and batch number DK3296 is converted into minced beef identified with GTIN 4055555000568 and batch number NL1232.

GTIN	40555550005688
Batch number	NL1232
Date of arrival	12.09.2004
Fat content	40 %
Country of cutting	Netherlands
Date of departure	13.09.2004

The message sent from the mincer to the retailer contains the following information (related to the product respectively GTIN):

TradItem Identification

ItemSub Identification

GTIN Additional ID

40555550005688 NL1232

Meat history information (origin and processing history)

Activity History

Current step identification 1
 Next step identification 2
 Activity Type: Breeding
 Activity Step
 Country of activity Belgium
 Performer Type Breeder

Performer Identification: Name: Producer company
 Street: Backstreet 133
 City: Brussels
 Postal code: 12345
 Country: Belgium

Date of arrival

Date of departure 01.03.2004

Reason for movement sale for fattening

Meat Despatch Information breedingDetails

Date of birth	01.01.2004
Gender	male
Breed	Jersey
Feeding system	organic
Holding system	predominantly barn
Breed of father	Jersey
Breed of mother	Jersey

Activity History

Current step identification 2

Next step identification 3

Activity Type: Fattening

Activity Step 1

Country of activity Netherlands

Performer Type Fattener

Performer Identification: Name: Fattening company
 Street: Bigstreet 5
 City: Amsterdam
 Postal code: 34567
 Country: Netherlands

Date of arrival 02.03.2004

Date of departure 01.06.2004

Reason for movement sale for fattening

Meat Despatch Information Fattening Details

Feeding system	Not specified
Holding system	predominantly pasture

Activity History

Current step identification 3

Next step identification 4

Activity Type: Fattening

Activity Step 2

Country of activity Germany

Performer Type Fattener

Performer Identification: Name: Fettmann KG
 Street: Kanalstraße 33
 City: Köln
 Postal code: 50825
 Country: Germany

Date of arrival 02.06.2004

Date of departure 02.09.2004

Reason for movement sale for slaughtering

Meat Despatch Information Fattening Details

Country of fattening	Germany
Feeding system	Intensive
Holding system	predominantly pasture

Activity History

Current step identification 4

Next step identification 5

Activity Type: Slaughtering

Activity Step															
Country of activity	Belgium														
Performer Type	Slaughterer														
Performer Identification:	GLN: 4012345000009														
	ApprovalNumber:BE234														
Date of arrival	03.09.2004														
Date of departure	05.09.2004														
Reason for movement	sale for cutting														
	<table> <tr> <th colspan="2">Meat Despatch Information</th></tr> <tr> <th colspan="2">Slaughtering Details</th></tr> <tr> <td>Date of slaughter</td><td>04.09.2004</td></tr> <tr> <td>Slaughter system</td><td>halal</td></tr> <tr> <td>Category (UN/ECE)</td><td>young intact male</td></tr> <tr> <td>Conformation (SEUROP)</td><td>E</td></tr> <tr> <td>Fat cover (UN/ECE)</td><td>Not specified</td></tr> </table>	Meat Despatch Information		Slaughtering Details		Date of slaughter	04.09.2004	Slaughter system	halal	Category (UN/ECE)	young intact male	Conformation (SEUROP)	E	Fat cover (UN/ECE)	Not specified
Meat Despatch Information															
Slaughtering Details															
Date of slaughter	04.09.2004														
Slaughter system	halal														
Category (UN/ECE)	young intact male														
Conformation (SEUROP)	E														
Fat cover (UN/ECE)	Not specified														
Activity History															
Current step identification	5														
Next step identification	6														
Activity Type:	Cutting														
Activity Step	1														
Country of activity	France														
Performer Type	Cutter														
Performer Identification:	GLN: 4000005000070														
	Approval Number: FR2345														
Date of arrival	05.09.2004														
Date of departure	07.09.2004														
	<table> <tr> <th colspan="2">Meat Despatch Information</th></tr> <tr> <th colspan="2">Cutting Details</th></tr> <tr> <td>UN/ECE classification</td><td>1164353010400015000</td></tr> </table>	Meat Despatch Information		Cutting Details		UN/ECE classification	1164353010400015000								
Meat Despatch Information															
Cutting Details															
UN/ECE classification	1164353010400015000														
ActivityHistory															
Current step identification	5														
Next step identification	6														
Activity Type:	Cutting														
Activity Step	2														
Performer Type	Cutter														
Performer Identification:	GLN: 4400999000016														
	Approval Number: DK98767														
Date of arrival	08.09.2004														
Date of departure	10.09.2004														
	<table> <tr> <th colspan="2">Meat Despatch Information</th></tr> <tr> <th colspan="2">Cutting Details</th></tr> <tr> <td>UN/ECE classification</td><td>1164353010400017999</td></tr> </table>	Meat Despatch Information		Cutting Details		UN/ECE classification	1164353010400017999								
Meat Despatch Information															
Cutting Details															
UN/ECE classification	1164353010400017999														
ActivityHistory															
Current step identification	7														
Next step identification															
Activity Type:	Mincing														
Activity Step	1														
Country of activity	Netherlands														
Performer Type	Mincer														
Performer Identification:	GLN: 4055555999992														
Date of arrival	12.09.2004														
Date of departure	13.09.2004														
	<table> <tr> <th colspan="2">Meat Despatch Information</th></tr> <tr> <th colspan="2">Mincing Details</th></tr> <tr> <td>Fat content</td><td>40 %</td></tr> </table>	Meat Despatch Information		Mincing Details		Fat content	40 %								
Meat Despatch Information															
Mincing Details															
Fat content	40 %														

Process step 7: Retailer

A shipment of 1 batch of consumer units from the mincer is received September 30th, 2004.

The batch is made available for sale at a retail outlet October 1st, 2004.

Document Example (message after process step 4)

Attribute	Value
MeatDespatchAdviceLineItemExtension	
AnimalIdentification (+animalIdentification)	
animalIdentificationNumber	AU71244008
MeatActivityHistory (*1)	
meatProcessingActivityTypeCode	BREEDING
currentStepIdentification	1
nextStepIdentification	2
countryOfActivityCode	BE
dateOfDeparture	2004-03-01
movementReasonCode	Sale for fattening
MeatProcessingParty	
meatProcessingPartyTypeCode	BREEDER
Address	
name	Producer Company
streetAddressOne	Rue du Bac 133
city	Brussels
postalCode	12345
countryCode	BE
MeatWorkItemIdentification	
meatWorkItemTypeCode	ANIMAL
AnimalIdentification (+animalIdentification)	
animalIdentificationNumber	AU71244008
MeatBreedingDetails	
breedCode	Jersey
breedOfMotherCode	Jersey
breedOfFatherCode	Jersey
dateOfBirth	2004-01-01
feedingSystemCode	organic
genderCode	MALE
housingSystemCode	Predominantly barn
AnimalIdentification (+paternalIdentification)	
animalIdentificationNumber	AU71244111

Attribute	Value
AnimalIdentification (+maternalIdentification)	
animalIdentificationNumber	AU71244222
MeatActivityHistory (*2)	
meatProcessingActivityTypeCode	FATTENING
currentStepIdentification	2
nextStepIdentification	3
activitySubStepIdentification	1
countryOfActivityCode	NL
dateOfArrival	2004-03-02
dateOfDeparture	2004-06-01
movementReasonCode	Sale for fattening
MeatProcessingParty	
meatProcessingPartyTypeCode	FATTENER
Address	
name	Fattening Company
streetAddressOne	Damstraat 5
city	Amsterdam
postalCode	34567
countryCode	NL
MeatWorkItemIdentification	
meatWorkItemTypeCode	ANIMAL
AnimalIdentification (+paternalIdentification)	
animalIdentificationNumber	AU71244008
MeatFatteningDetails	
housingSystemCode	Predominantly pasture
MeatActivityHistory (*3)	
meatProcessingActivityTypeCode	FATTENING
currentStepIdentification	3
nextStepIdentification	4
activitySubStepIdentification	2
countryOfActivityCode	DE
dateOfArrival	2004-06-02
dateOfDeparture	2004-09-02
movementReasonCode	Sale for slaughtering
MeatProcessingParty	
meatProcessingPartyTypeCode	FATTENER
Address	

Attribute	Value
name	Fettmann KG
streetAddressOne	Kanalstraße 5
city	Köln
postalCode	50825
countryCode	DE
MeatWorkItemIdentification	
meatWorkItemTypeCode	ANIMAL
AnimalIdentification (+animalIdentification)	
animalIdentificationNumber	AU71244008
MeatFatteningDetails	
feedingSystemCode	Intensive
housingSystemCode	Predominantly pasture
MeatActivityHistory (*4)	
meatProcessingActivityTypeCode	SLAUGHTERING
currentStepIdentification	4
countryOfActivityCode	BE
dateOfArrival	2004-09-03
dateOfDeparture	2004-09-05
movementReasonCode	Sale for cutting
MeatProcessingParty	
meatProcessingPartyTypeCode	SLAUGHTERER
gln	4012345000009
approvalNumber	BE234
MeatWorkItemIdentification	
meatWorkItemTypeCode	CARCASS
AnimalIdentification (+animalIdentification)	
animalIdentificationNumber	AU71244008
TradeItemIdentification (+productIdentification)	
gtin	40123450000166
MeatSlaughteringDetails	
meatConformationCode	SE
dateOfSlaughtering	2004-09-04
meatCategoryCode	Young intact male
slaughteringSystemCode	halal
slaughteringWeight	280,3 KGM

6. Implementation Considerations

6.1. User Guide

The Functional User Guide contains more information about the structure and content of the message:

http://www.gs1.org/docs/ecom/xml/3/3.2/eCom-Trade_messages.html#DespatchAdviceLineItemExtensionEbmeat

6.2. Message Specific Considerations

Not Applicable

7. Summary of Changes

Any change in the GS1 standards is done based on the Work Request (WR) submitted by the GS1 User Companies or Member Organisations. All Work Requests are documented in the Work Request system available on the GS1 website: <http://wr.gs1.org>. The system is accessible to registered users. New visitors need to register first, to be able to access it. WRs can be searched by the number referenced in tables below, see: Search Work Requests. The number starts with the two last digits of the year when it was submitted, followed by the consecutive number within that year.

 **Note:** WRs submitted earlier than February 2012 should be searched in Old Change Requests.

7.1. BMS Release 3.0

Change	BSD Version	Associated CR Number
Reworked for Major release 3.0, updated the model, GDD reports and examples to reflect the changes in modernizing methodology.	1.0.0	N/A
Added definition for optimumMaturationDate	1.0.0	N/A
Added the following data types and code lists (formerly part of eCom Common): <ul style="list-style-type: none"> AnimalIdentificationTypeCode MeatProcessingActivityTypeCode MeatProcessingPartyIdentificationTypeCode MeatProcessingPartyTypeCode MeatWorkItemTypeCode 	1.0.0	N/A
Updated for BMS Publication: <ul style="list-style-type: none"> Changed status from Draft to Approved Removed copyright year in footer of document Clean-up of Document Change History Fixed missing definition in GDD report for attribute optimumMaturationDate in class MeatSlaughteringDetails to "Date at which optimal maturity occurs." (definition from Release 2.2, def for 3.0 still missing in GDD) Updated architectural principles section to correct fields. 	1.0.0	N/A

7.2. BMS Release 3.1

No work requests. Indirect changes due to upgrade to new Shared and eCom Common libraries.

7.3. BMS Release 3.2

Change	Associated WR
<p>Added Attribute Value Pair at the root, line item and sub line item levels</p> <div> class ebMeat - MeatDespatchAdviceLineItemExtension - maintenance view <div> <div>« »</div> <div>MeatActivityHistory</div> <div> + meatProcessingActivityTypeCode :MeatProcessingActivityTypeCode + currentStepIdentification :positiveInteger [0..1] + nextStepIdentification :positiveInteger [0..1] + activitySubStepIdentification :positiveInteger [0..1] + countryOfActivityCode :CountryCode [0..1] + dateOfArrival :date [0..1] + dateOfDeparture :date [0..1] + movementReasonCode :Code [0..1] + «association» avpList :Ecom_AttributeValuePairList [0..1] </div> <div> <i>maintenance</i> Change: (Verified) 3.2 added +avpList (WR 14-110) </div> </div> </div>	14-000110

8. Appendices

Not Applicable

9. Acknowledgements

The following is a list of individuals (and their companies) who participated in the creation, review and approval of this BMS.

9.1.1. Work Group

Function	Name	Company / organisation
Co-chair	Rossner (Pottier), Natascha	GS1 France
Co-chair	Schmidt, Tom Eric	August Storck KG
Member	Bemrose, Jonathan	R&R Ice Cream
Member	Bodemer, Petra	dm-drogerie markt GmbH + Co. KG
Member	Boikanyo, Rebhone	GS1 South Africa / Consumer Goods Council of South Africa
Member	Canada, ON	M3B 3L1
Member	Carlson, Jim	General Mills, Inc.
Member	Chresta, Richard	GS1 Switzerland

Function	Name	Company / organisation
Member	Cook, Don	Wal-Mart Stores, Inc.
Member	Cox, Marc	Philips Electronics N.V.
Member	Darnell, David	Systrends
Member	De Flou, Nele	GS1 Belgium & Luxembourg
Member	Dicks, Arne	GS1 Germany
Member	Duvinger, Karina	GS1 Sweden
Member	Foerderer, Klaus	GS1 Germany
Member	Gathmann, Stefan	GS1 Ireland
Member	Grangard, Anders	GS1 Global Office
Member	Harpell, Eileen	GS1 Community Room Staff
Member	Herregodts, Kurt	GS1 Belgium & Luxembourg
Member	Kempkes, Fred	Unilever N.V.
Member	Kernan, Brendan	GS1 Ireland
Member	Kidd, Robin	Nestle
Member	Krid, Anne-Claire	GS1 France
Member	Lanoué, Tom	General Mills, Inc.
Member	Laur, Rita	GS1 Canada
Member	Lenman, Mia	GS1 Sweden
Member	Lerch, Hanjoerg	METRO Group
Member	Moberg, Dale	Axway
Member	Montes de Oca, Alejandra	GS1 Mexico
Member	Ng, Ella	GS1 Australia
Member	Peelen, Esther	GS1 Netherlands
Member	Pelekies, Andreas	GS1 Germany
Member	Perrier, Patricia	GS1 France
Member	Przybilla, Christian	GS1 Germany
Member	Pujol, Xavier	GS1 Spain
Member	Racek, Greg	Wal-Mart Stores, Inc.
Member	Repetto, Mirko	GS1 Italy
Member	Robba, Steven	1WorldSync Holdings, Inc.
Member	Rosell, Pere	GS1 Spain
Member	Rosenberg, Steven	GS1 US
Member	Schmid, Sue	GS1 Australia
Member	Schneider, Christian	GS1 Switzerland
Member	Sehorz, Eugen	GS1 Austria
Member	Sharma, Vishal	General Mills, Inc.
Member	Shimazaki, Ayako	GS1 Japan

Function	Name	Company / organisation
Member	Sion, Emilie	GS1 France
Member	Souza, Nadia	GS1 Brasil
Member	Strand, Roman	GS1 Germany
Member	Tan, Milton	GS1 Malaysia
Member	Tompsett, Simon	Waitrose
Member	Trelle, Ute	1WorldSync Holdings, Inc.
Member	Tse, Steve	GS1 Hong Kong
Member	Tyson, Betty	Knouse Foods Cooperative, Inc
Member	Van den Bergh, Senne	GS1 Belgium & Luxembourg
Member	Van der Eijk, Pim	OASIS - Sonnenglanz Consulting BV
Member	Veldhuis, Saskia	Procter & Gamble Co.
Member	Welch, Shan	GS1 UK
Member	Westerkamp, Jan	GS1 Netherlands
Member	Wilson, Mary	GS1 US
Member	Windsperger, Bekki	Best Buy Co., Inc.
Member	Yang, Shaopeng	GS1 China
Member	Yusdiar, Dani	GS1 Indonesia
Member	Zwanziger, Greg	SUPERVALU

9.1.2. Development Team Members

Function	Name	Organisation
GSMP Process Lead	Jean-Luc Champion	GS1 Global Office
Standards Content Lead	Coen Janssen, Ewa Iwicka	GS1 Global Office
Technical Development Lead	Ewa Iwicka	GS1 Global Office
Peer Review	Eric Kauz	GS1 Global Office