



Transport Instruction and Response Business Message Standard (BMS)

Release 3.1

1-May-2013, Issue 1



Document Summary

Document Item	Current Value
Document Title	Transport Instruction and Response - Business Message Standard (BMS)
BMS Release	3.1
Document Version	Issue 1, 1-May-2013
Work Group Name	eCom SMG
BMS Template Version	2.3

Change Request Reference

Date of WR Submission	WR Submitter	Work Request Number
	GS1 Germany	12-202

Business Requirements Document (BRAD) Reference

BRAD Title:	BRAD Date:	BRAD Version
Transport Management		1.0

Document Change History

Date of Change	Version	Changed By	Reason for Change	Summary of Change
8-Nov-2011	1.1	Coen Janssen	BMS publication	See section Summary of Changes
1-may-2013	BMS 3.1 issue 1	Coen Janssen	BMS Release 3.1	See section Summary of Changes

Disclaimer

WHILST EVERY EFFORT HAS BEEN MADE TO ENSURE THAT THE GUIDELINES TO USE THE GS1 STANDARDS CONTAINED IN THE DOCUMENT ARE CORRECT, GS1 AND ANY OTHER PARTY INVOLVED IN THE CREATION OF THE DOCUMENT HEREBY STATE THAT THE DOCUMENT IS PROVIDED WITHOUT WARRANTY, EITHER EXPRESSED OR IMPLIED, REGARDING ANY MATTER, INCLUDING BUT NOT LIMITED TO THE OF ACCURACY, MERCHANTABILITY OR FITNESS FOR A PARTICULAR PURPOSE, AND HEREBY DISCLAIM ANY AND ALL LIABILITY, DIRECT OR INDIRECT, FOR ANY DAMAGES OR LOSS RELATING TO OR RESULTING FROM THE USE OF THE DOCUMENT. THE DOCUMENT MAY BE MODIFIED, SUBJECT TO DEVELOPMENTS IN TECHNOLOGY, CHANGES TO THE STANDARDS, OR NEW LEGAL REQUIREMENTS. SEVERAL PRODUCTS AND COMPANY NAMES MENTIONED HEREIN MAY BE TRADEMARKS AND/OR REGISTERED TRADEMARKS OF THEIR RESPECTIVE COMPANIES. GS1 IS A REGISTERED TRADEMARK OF GS1 AISBL.

Table of Contents

1. Business Domain View	4
1.1. Problem Statement / Business Need	4
1.2. Objective	4
1.3. Audience	4
1.4. References	4
1.5. Acknowledgements	5
1.5.1. Work Group	5
1.5.2. Development Team Members	5
2. Business Context	6
3. Business Transaction View	6
3.1. Issue Transport Instruction.....	6
3.2. Confirm Transport Instruction.....	7
4. Business Information View	9
4.1. Transport Instruction (message)	9
4.2. Transport Instruction Response (message).....	11
4.3. Transport Instruction Consignment.....	13
4.4. Transport Instruction Consignment Item.....	17
4.5. Transport Instruction Shipment.....	19
4.6. Transport Instruction Shipment Item.....	23
4.7. Transport Instruction Terms	25
4.8. Transport Instruction Transport Equipment	27
4.9. Transport Instruction Transport Movement.....	29
4.10. Enumerations (message specific).....	32
4.10.1. TransportInstructionFunctionEnumeration	32
4.10.2. TransportInstructionResponseTypeEnumeration.....	32
4.10.3. TransportInstructionStatusEnumeration.....	32
4.11. Codelists.....	32
5. Business Message Examples	33
5.1. Transport Instruction – Domestic, 1 consignment, 1 truck, with logistic units	33
5.2. Transport Instruction Response– Domestic, 1 consignment, 1 truck, with logistic units	35
5.3. Transport Instruction – Domestic, 1 shipment, 1 truck, with logistic units	37
6. Implementation Considerations	39
7. Appendices	39
8. Summary of Changes.....	39
8.1. BMS Release 3.0	39
8.2. BMS Release 3.1	39

1. Business Domain View

1.1. Problem Statement / Business Need

The main objectives of the Transport Instruction are to communicate and share the arrangements (through the agreed conditions) of the movement of the goods (including collection and delivery) between all parties involved and providing the information necessary to perform the handling of the goods.

The Transport Instruction will be sent by the Logistic Services Buyer (supplier, retailer, 3rd party warehouse or freight forwarder) to a Logistic Services Seller (freight forwarder or carrier) upon order creation.

The Transport Instruction can include a request for either executing a consignment or executing a shipment. The trading partners need the ability to differentiate between less detailed transport instructions (shipments) and more detailed instructions (consignments).

A Transport Instruction Response may be sent from Logistic Services Seller to Logistic Services Buyer, but exchanging this message is optional. In many cases there exist standing agreements that the Logistic Services Seller will accept all Transport Instructions from the Logistic Services Buyer 'as sent'. In that case sending the Transport Instruction Response adds no value to the process and partners can agree NOT to exchange this message-type.

1.2. Objective

This standard defines the transaction model and data model for the following business messages:

- Transport Instruction
- Transport Instruction Response

1.3. Audience

Not Applicable

1.4. References

Reference Name
BRAD Transport Management (GS1, 2009)
Logistics Interoperability Model (GS1, 2007)
BMS eCom Common Library 3.1 (GS1, 2012)
BMS Shared Common Library 3.1 (GS1, 2012)

1.5. Acknowledgements

The following is a list of individuals (and their companies) who participated in the creation, review and approval of this BMS.

1.5.1. Work Group

Function	Name	Company / organisation
BRG Work Group Chair	Fred Kempkes	Unilever
BRG Work Group Chair	Jaco Voorspuij	DHL
BRG Work Group Member	Mia Lenman	GS1 Sweden
BRG Work Group Member	Richard Chresta	GS1 Switzerland & UNCEFACT TGB3
BRG Work Group Member	Jeff Melcher	Army & Air Force Exchange Service
BRG Work Group Member	Yuliya Shevchenko	GS1 Global Office
BRG Work Group Member	Roman Strand	GS1 Germany
BRG Work Group Member	Henk van Maaren	CETIMA & UNCEFACT TBG3
BRG Work Group Member	Pere Rosell	GS1 Spain
BRG Work Group Member	Mats Rosen	DSV Sweden
BRG Work Group Member	Helena Lunden	ICA Sweden
BRG Work Group Member	Gerald Borgolte	Atos Origin
BRG Work Group Member	Audun Vennesland	SINTEF & eFreight
BRG Work Group Member	Mary Vayou	BMT Group Ltd & eFreight

1.5.2. Development Team Members

Function	Name	Organisation
GSMP Process Lead	Jean-Luc Champion	GS1 Global Office
Standards Content Lead	Coen Janssen	GS1 Global Office
Technical Development Lead	Ewa Iwicka	GS1 Global Office
Peer Review	Eric Kauz	GS1 Global Office

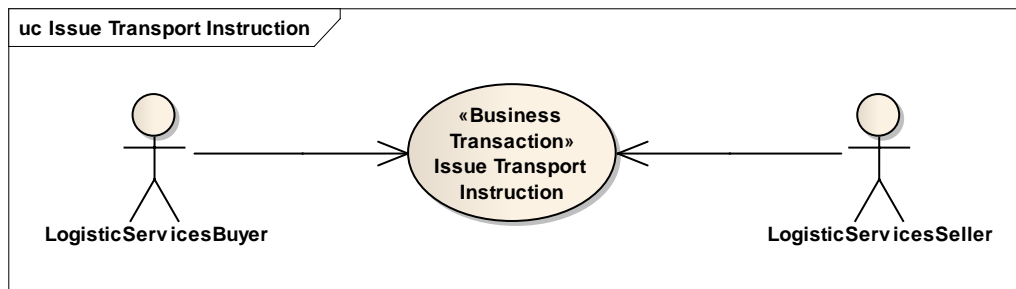
2. Business Context

Context Category	Value(s)
Industry	All
Geopolitical	All
Product	All
Process	Deliver / Transport Management
System Capabilities	GS1 System
Official Constraints	None

3. Business Transaction View

3.1. Issue Transport Instruction

Use Case Diagram



Use Case Description

Use Case ID	UC-1
Use Case Name	Issue Transport Instruction
Use Case Description	The main objectives are to communicate/ share the arrangement of the transport of goods between all parties involved in the movement of the consignment(s) and or shipment(s) as well as providing the information necessary to perform that transport and delivery of the goods.
Actors (Goal)	Logistic Services Buyer (LSB) Logistic Services Seller (LSS)
Performance Goals	Not applicable
Preconditions	Interoperation agreement is in place.
Post conditions	Transport instructions have been received by the LSS

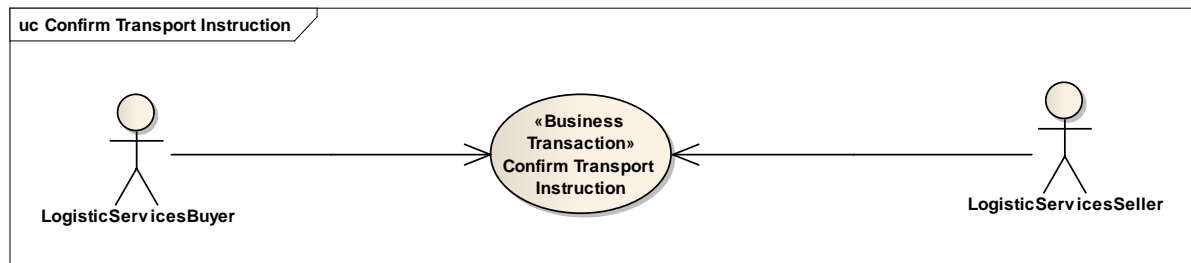
Scenario	Begins when the Logistic Services Buyer determines transport services are needed. Continues with...		
	Step #	Actor	Activity Step
	1	LSB	Issues a transport instruction
	2	LSS	Receives the transport instruction
	Ends when the LSS has processed the transport instruction in the transport management system.		
Alternative Scenario	Not applicable		
Related Requirements	Not applicable		
Related Rules	Not applicable		

Activity Diagram(s)

Not applicable

3.2. Confirm Transport Instruction

Use Case Diagram



Use Case Description

Use Case ID	UC-2
Use Case Name	Confirm Transport Instruction
Use Case Description	The main objectives are to give the confirmation or modification of the arrangement of the transport of goods between all parties.
Actors (Goal)	Logistic Services Buyer Logistic Services Seller
Performance Goals	Not applicable
Preconditions	The Logistic Services Seller did receive a transport instruction. In the interoperation agreement it was agreed between the Logistic Services Buyer and Logistic Service Seller that

Post conditions	Transport instruction response has been received by the LSB.		
Scenario	Begins when the Logistic Service Seller has determined the appropriate response to the transport instruction.		
	Continues with...		
	Step #	Actor	Activity Step
	1	LSS	Issues a transport instruction confirmation
	2	LSB	Receives the transport instruction confirmation
	3		
	Ends when the LSB has processed the transport instruction confirmation in the transport management system.		
Alternative Scenario	Not applicable		
Related Requirements	Not applicable		
Related Rules	Not applicable		

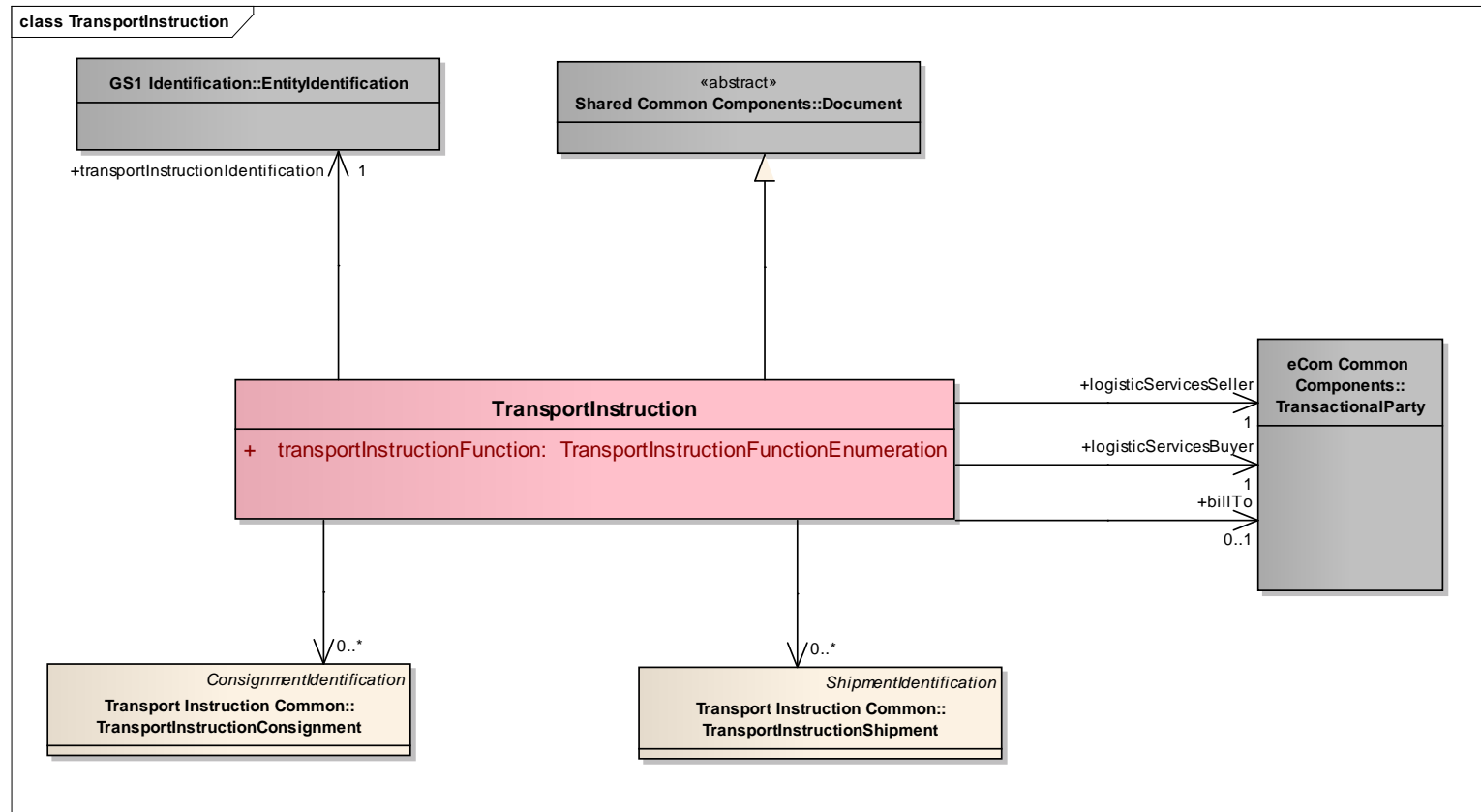
Activity Diagram(s)

Not applicable

4. Business Information View

4.1. Transport Instruction (message)

Class Diagram

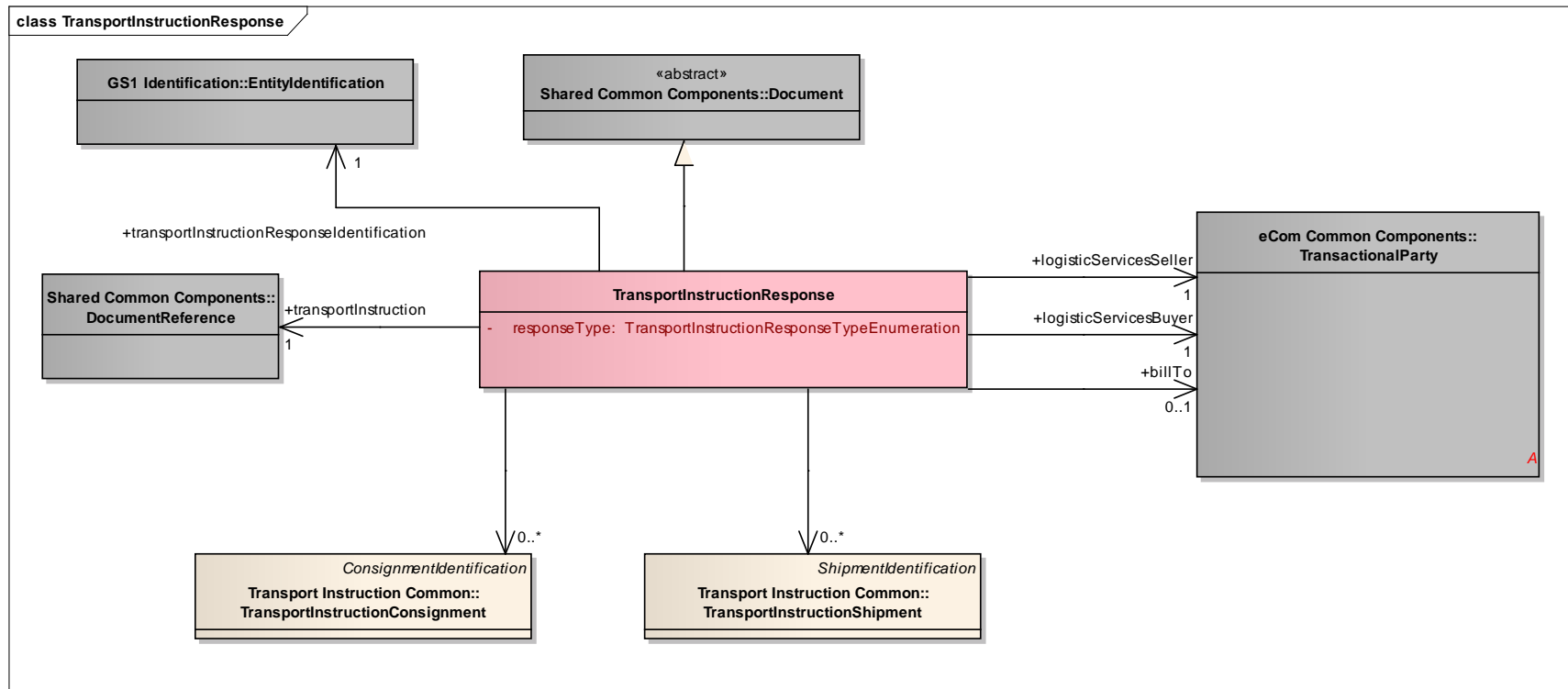


GDD Report

content	attribute / role	datatype / secondary class	multiplicity	definition	requirements
TransportInstruction				The main objectives of the Transport Instruction are to communicate and share the arrangements (through the agreed conditions) of the movement of the goods (including collection and delivery) between all parties involved and providing the information necessary to perform the handling of the goods.	
Generalization		Document		Provides the generic document details for the transport instruction.	BRAD TransportInstruction-2, 4
Association	logisticServicesSeller	TransactionalParty	[1..1]	A party that provides logistics services to another party.	BRAD TransportInstruction-6
Association	billTo	TransactionalParty	[0..1]	Identifies the party who receives the invoice. Synonym: Invoicee.	BRAD TransportInstruction-7
Association		TransportInstructionShipment	[0..*]	Provides the information on a shipment contained in this transport instruction.	BRAD TransportInstruction-8, 9, 10, 11, 15
Association	logisticServicesBuyer	TransactionalParty	[1..1]	A party that purchases logistics services from another party.	BRAD TransportInstruction-5
Association		TransportInstructionConsignment	[0..*]	Provides the information on a consignment contained in this transport instruction.	BRAD TransportInstruction-8, 12, 13
Association	transportInstructionIdentification	EntityIdentification	[1..1]	The identification of the transport instruction document.	BRAD TransportInstruction-1
Attribute	transportInstructionFunction	TransportInstructionFunctionEnumeration	[1..1]	The transport instruction function identifies whether the transport instruction is consignment-based or shipment-based.	BRAD TransportInstruction-3

4.2. Transport Instruction Response (message)

Class Diagram



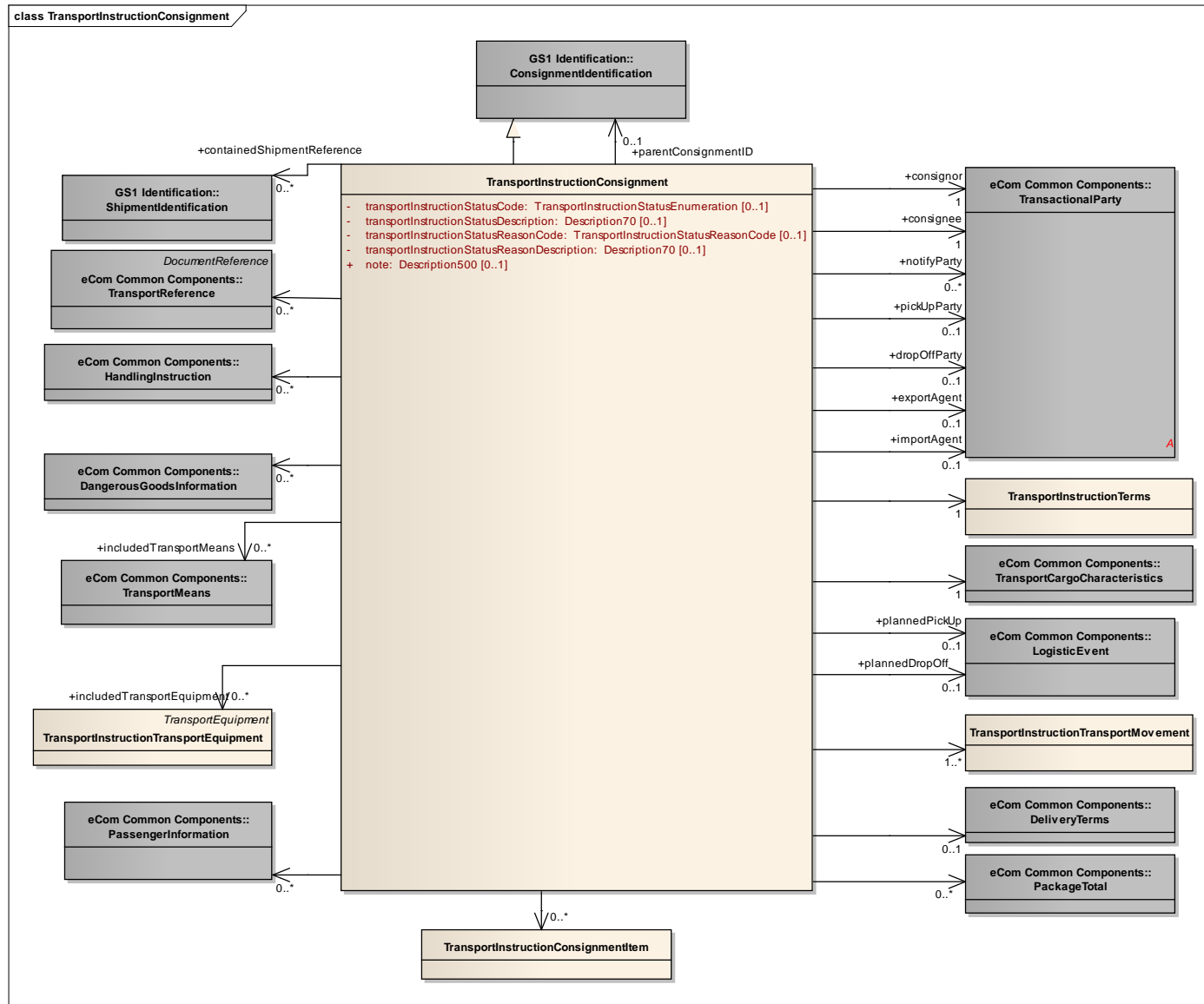
GDD Report

content	attribute / role	datatype / secondary class	multipl city	definition	requirements
TransportInstructionResponse				The main objective of the Transport Instruction Response is to confirm the requested transport services and where needed provide additional information.	
Association	transportInstruction	DocumentRefere nce	[1..1]	The identification of the referenced transport instruction.	BRAD TransportInstructionC onfirmation-7

content	attribute / role	datatype / secondary class	multiplicity	definition	requirements
Association	transportInstructionResponseIdentification	EntityIdentification	[1..1]	The identification of the transport instruction response document.	BRAD TransportInstructionConfirmation-2
Generalization		Document		Provides the generic document details for the transport instruction response.	BRAD TransportInstructionConfirmation-3, 18
Association	logisticServicesSeller	TransactionalParty	[1..1]	A party that provides logistics services to another party.	BRAD TransportInstructionConfirmation-5
Association	logisticServicesBuyer	TransactionalParty	[1..1]	A party that purchases logistics services from another party.	BRAD TransportInstructionConfirmation-4
Association	billTo	TransactionalParty	[0..1]	Identifies the party who receives the invoice. Synonym: Invoicee.	BRAD TransportInstructionConfirmation-6
Association		TransportInstructionConsignment	[0..*]	Provides the information on a consignment contained in this transport instruction response.	BRAD TransportInstructionConfirmation-1, 10, 11, 12, 13, 19
Association		TransportInstructionShipment	[0..*]	Provides the information on a shipment contained in this transport instruction response.	BRAD TransportInstructionConfirmation-1, 15, 16
Attribute	responseType	TransportInstructionResponseTypeEnumeration	[1..1]	Code specifying the acceptance or non-acceptance of the services requested in the Transport Instruction.	

4.3. Transport Instruction Consignment

Class Diagram



GDD Report

Content	Attribute/Role	Datatype/Secondary Class	Multiplicity	Definition	Requirements
TransportInstructionConsignment				A consignment is a logical grouping of goods (one or more physical entities) that is intended to be transported as a whole from a consignor to a consignee by a carrier or freight forwarder via one or more modes of transport, subject to one single transport contract.	
Association	plannedDropOff	LogisticEvent	0..1	Details on the planned delivery of the consignment.	BRAD CON6, CON7 (LogisticLocation)
Association		TransportInstructionTransportMovement	1..*	The transport movement details for this consignment.	
Association	plannedPickUp	LogisticEvent	0..1	Details on the planned collection of the consignment.	BRAD CON6, CON7 (LogisticLocation)
Association		DeliveryTerms	0..1	The applicable legal, customs, financial and insurance terms that have been agreed for the delivery of the consignment.	BRAD CON10
Association		HandlingInstruction	0..*	Instruction on the way to treat the goods during transport and storage.	BRAD CON9
Association		PackageTotal	0..*	Aggregate information per type of package contained in the consignment.	BRAD CON18
Association	includedTransportEquipment	TransportInstructionTransportEquipment	0..*	Details on the transport equipment contained in the consignment.	
Association	consignee	TransactionalParty	1	The party receiving a consignment of goods.	BRAD CON1
Association		TransportReference	0..*	References to the commercial transaction or to transport or legal documents related to the consignment.	BRAD CON19
Association	parentConsignmentID	ConsignmentIdentification	0..1	Reference to another consignment that contains this consignment (and several other consignments).	BRAD CON22

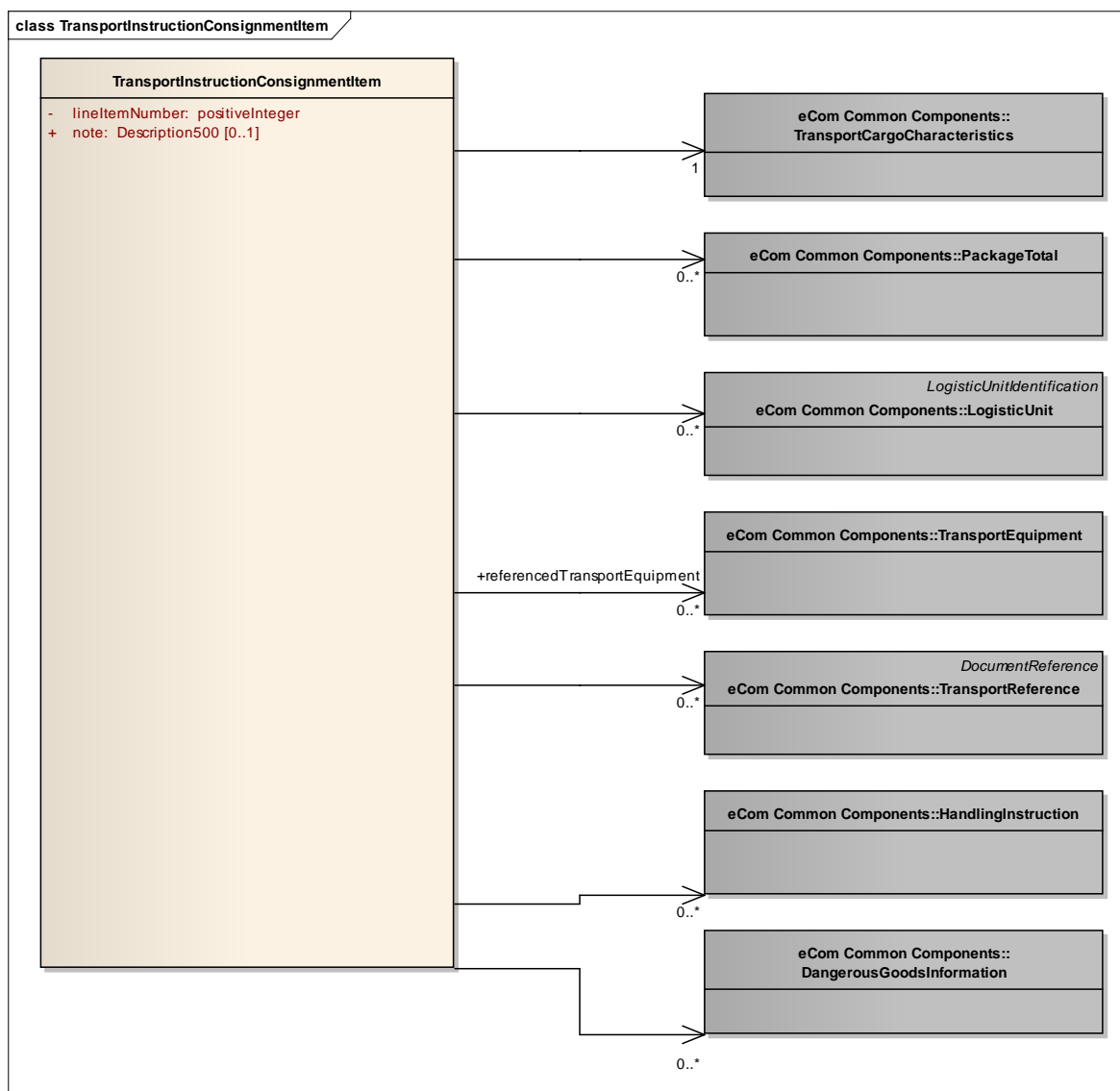


Association		TransportCargoCharacteristics	1	Aggregate information on the goods that are contained in this consignment.	BRAD CON28
Association	containedShipmentReference	ShipmentIdentification	0..*	Reference to the shipment(s) contained in this consignment. #	
Association		TransportInstructionConsignmentItem	0..*	A line item included in this consignment of goods.#	
Association	notifyParty	TransactionalParty	0..*	The party which needs to be informed regarding the consignment information to fulfill the end to end transportation process.	BRAD CON2
Association	consignor	TransactionalParty	1	The party despatching a consignment of goods.	BRAD CON1
Association		TransportInstructionConsignment	0..*	Provides the information on a consignment contained in this transport instruction.	BRAD TransportInstruction-8, 12, 13
Association	includedTransportMeans	TransportMeans	0..*	Details on the transport means contained in the consignment, such as trucks being transported on a ferry.	
Association		DangerousGoodsInformation	0..*	Hazardous instructions for this consignment, such as where or how specified packages or containers are to be handled because of restriction from dangerous goods.	BRAD CON30
Generalization		ConsignmentIdentification		The unique identifier for this consignment.	BRAD CON3
Association		PassengerInformation	0..*		
Association	exportAgent	TransactionalParty	0..1	The party acting as an agent for, or on behalf of, the consignor with respect to the customs export procedures for this consignment.	BRAD TM: additional requirement during design phase.
Association		TransportInstructionConsignment	0..*	Provides the information on a consignment contained in this transport instruction response.	BRAD TransportInstructionConfirmation-1, 10, 11, 12, 13, 19

Association	dropOffParty	TransactionalParty	0..1	Identification of the physical location to where goods will be or have been shipped.	BRAD CON1
Association	pickUpParty	TransactionalParty	0..1	Identification of the physical location from where goods will be picked up for delivery.	BRAD CON1
Association	importAgent	TransactionalParty	0..1	The party acting as an agent for, or on behalf of, the consignee with respect to the customs import procedures for this consignment. #	BRAD TM: additional requirement during design phase.
Association		TransportInstructionTerms	1	The agreed transport service conditions for this consignment.	
Attribute	transportInstructionStatusCode	TransportInstructionStatus Enumeration	0..1	Code specifying the instruction status of this consignment.	BRAD TransportInstructionConfirmation-8
Attribute	transportInstructionStatusDescription	Description70	0..1	Textual description of the instruction status of this consignment. #	BRAD TransportInstructionConfirmation-8
Attribute	transportInstructionStatusReasonCode	TransportInstructionStatus ReasonCode	0..1	Code specifying the instruction status reason for this consignment.	BRAD TransportInstructionConfirmation-8
Attribute	transportInstructionStatusReasonDescription	Description70	0..1	Textual description of the instruction status reason for this consignment.	BRAD TransportInstructionConfirmation-8
Attribute	note	Description500	0..1	Free text used to convey information that is not processed by applications. Only meant to present the information to a user as on a screen, in a browser, etc.	BRAD RQ 09.236.F

4.4. Transport Instruction Consignment Item

Class Diagram

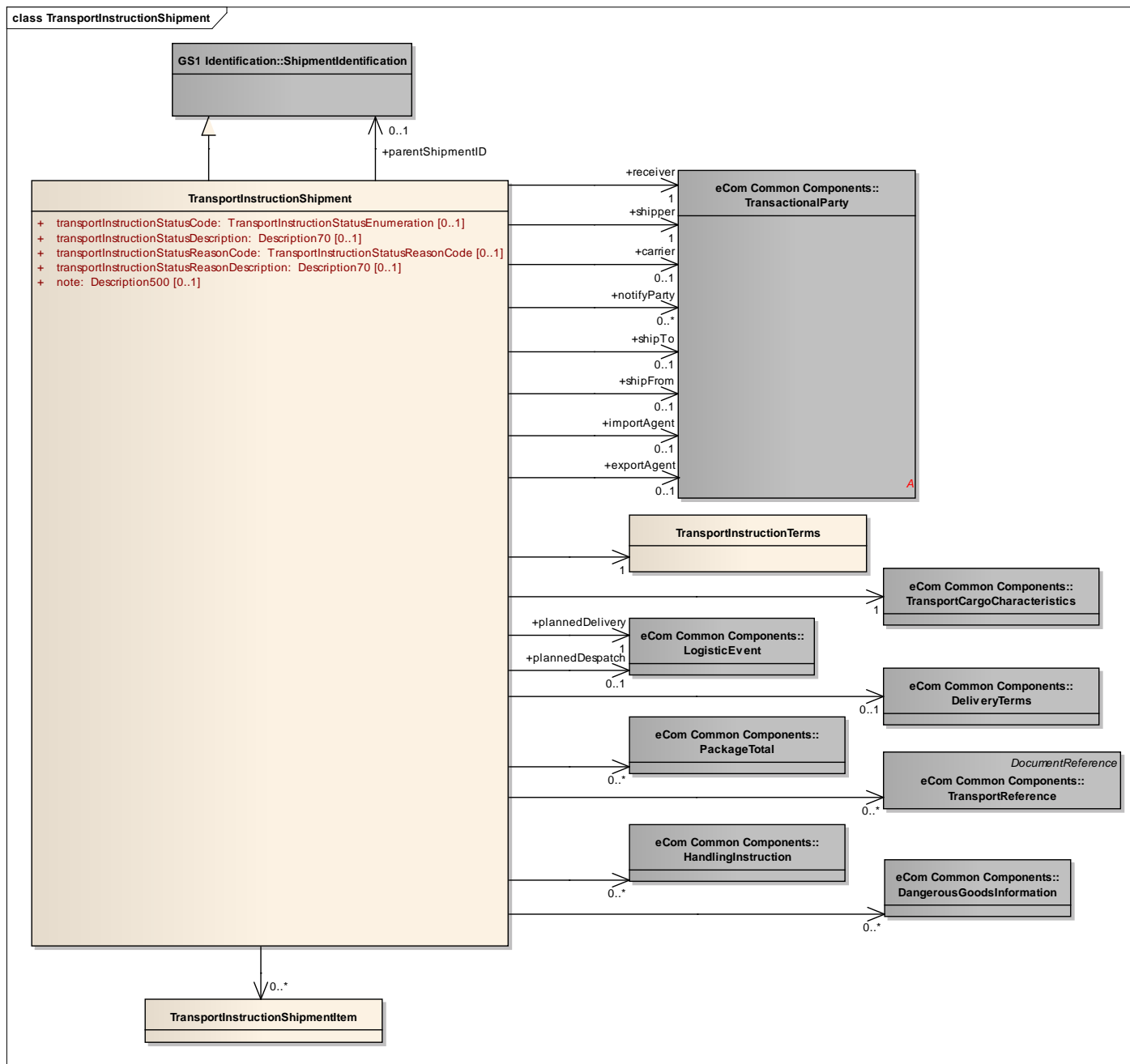


GDD Report

Content	Attribute / Role	Datatype /Secondary class	Multi plicit y	Definition	Requireme nts
TransportInstructionConsignme ntItem				A <u>consignment item</u> is a (collection of) Load Units that can be identified (uniquely) within the consignment and may be treated/handled in the same way during transportation (and associated administrative processes).	
Association		LogisticUnit	0..*	Information on the logistic unit(s) included in the consignment item.	
Association		TransportReference	0..*	References to the commercial transaction or to transport or legal documents related to the consignment item.	BRAD CIT9
Association		HandlingInstruction	0..*	Handling instructions for the consignment item.	BRAD CIT6, CIT8
Association		DangerousGoodsInfor mation	0..*	Hazardous instructions for this consignment item, such as where or how specified packages or containers are to be handled because of restriction from dangerous goods.	BRAD CIT7
Association		PackageTotal	0..*	Aggregate information per type of package included in the consignment item.	BRAD CIT11
Association	referencedTransp ortEquipment	TransportEquipment	0..*	Identification of the transport equipment that contains the consignment item.	
Association		TransportCargoCharact eristics	1	Aggregate information on the goods that are included in this consignment item.	
Attribute	lineItemNumber	positiveInteger	1..1	The sequence number for this consignment item.	BRAD CIT3
Attribute	note	Description500	0..1	Free text used to convey information that is not processed by applications. Only meant to present the information to a user as on a screen, in a browser, etc.	BRAD RQ 09.236.F

4.5. Transport Instruction Shipment

Class Diagram



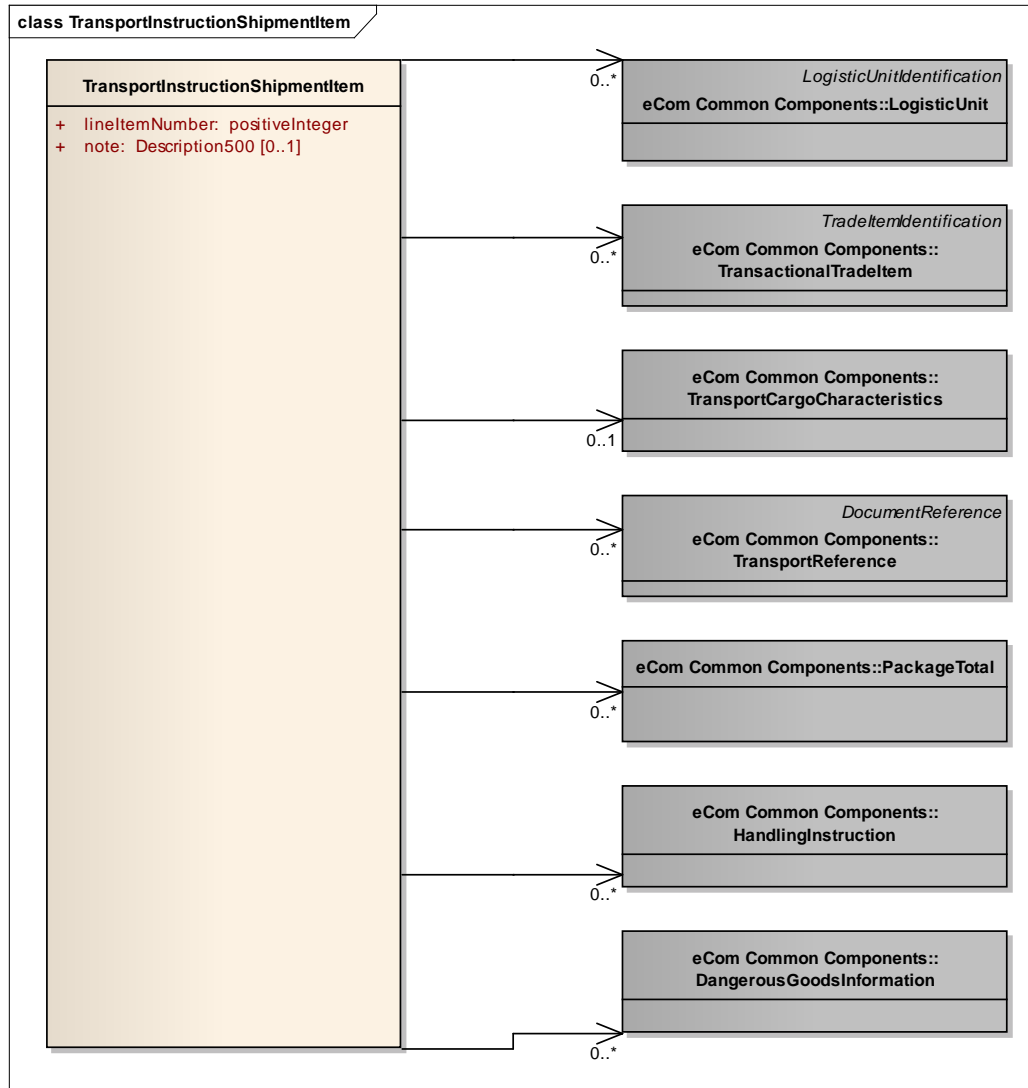
GDD Report

Content	Attribute / Role	Datatype /Secondary class	Multiplicity	Definition	Requirements
TransportInstructionShipment				A <u>shipment</u> is an identifiable collection of one or more Trade Items available to be transported together from the shipper (Original Consignor/Shipper), to the receiver (Final/Ultimate Consignee). Typically the shipment is the entity communicated between trading partners in the Despatch and Receiving Advice.	
Association	receiver	TransactionalParty	1	A party which engages in receiving this shipment of goods.	BRAD SHM1
Association		TransportInstructionShipmentItem	0..*	A line item included in this shipment of goods.#	
Association		HandlingInstruction	0..*	Instruction on the way to treat the goods during transport and storage. #	BRAD SHM7
Association	notifyParty	TransactionalParty	0..*	The party which needs to be informed regarding the shipment to fulfill the end to end transportation process. #	BRAD SHM20
Association	plannedDespatch	LogisticEvent	0..1	Details on the planned despatch of the shipment.	BRAD SHM10, SHM11 (LogisticLocation)
Generalization		ShipmentIdentification		The unique identifier for this shipment.	BRAD SHM4
Association		DeliveryTerms	0..1	The applicable legal, customs, financial and insurance terms that have been agreed for the delivery of the shipment.	BRAD SHM27
Association	parentShipmentID	ShipmentIdentification	0..1	Reference to a shipment that contains this shipment (and several other shipments). #	BRAD SHM17
Association	shipFrom	TransactionalParty	0..1	The physical location from where goods will be or have been shipped.	BRAD SHM1
Association		TransportInstructionShipment	0..*	Provides the information on a shipment contained in this transport instruction.	BRAD TransportInstruction-8, 9, 10, 11, 15
Association	shipper	TransactionalParty	1	A party which engages in shipping this shipment of goods;	BRAD SHM1
Association	importAgent	TransactionalParty	0..1	The party acting as an agent for, or on behalf of, the consignee with respect to the customs import procedures for this shipment. #	BRAD TM: additional requirement during design phase.
Association		DangerousGoodsInformation	0..*	Hazardous instructions for this shipment, such as where or how specified packages or containers are to be handled because of restriction from dangerous goods.	BRAD SHM8
Association	carrier	TransactionalParty	0..1	A party that physically transports goods from one place to another.	BRAD SHM3

Content	Attribute / Role	Datatype /Secondary class	Multiplicity		Definition	Requirements
Association	plannedDelivery	LogisticEvent	1		Details on the planned delivery of the shipment.	BRAD SHM10, SHM11 (LogisticLocation)
Association		TransportReference	0..*		References to the commercial transaction or to transport and legal documents related to the shipment.	BRAD SHM16
Association		PackageTotal	0..*		Aggregate information per type of package contained in the shipment.	BRAD SHM19
Association		TransportInstructionShipment	0..*		Provides the information on a shipment contained in this transport instruction response.	BRAD TransportInstructionConfirmation-1, 15, 16
Association	exportAgent	TransactionalParty	0..1		The party acting as an agent for, or on behalf of, the consignor with respect to the customs export procedures for this shipment. #	BRAD TM: additional requirement during design phase.
Association	shipTo	TransactionalParty	0..1		The physical location to where goods will be or have been shipped.	BRAD SHM1
Association		TransportCargoCharacteristics	1		Aggregate information on the goods that are contained in this shipment.	
Association		TransportInstructionTerms	1		The agreed transport service conditions for this shipment.	
Attribute	transportInstructionStatusCode	TransportInstructionStatusEnumeration	0..1		Code specifying the instruction status of this shipment. #	BRAD TransportInstructionConfirmation-9
Attribute	transportInstructionStatusDescription	Description70	0..1		Textual description of the instruction status of this shipment. #	BRAD TransportInstructionConfirmation-9
Attribute	transportInstructionStatusReasonCode	TransportInstructionStatusReasonCode	0..1		Code specifying the instruction status reason for this shipment.	BRAD TransportInstructionConfirmation-9
Attribute	transportInstructionStatusReasonDescription	Description70	0..1		Textual description of the instruction status reason for this shipment. #	BRAD TransportInstructionConfirmation-9
Attribute	note	Description500	0..1		Free text used to convey information that is not processed by applications. Only meant to present the information to a user as on a screen, in a browser, etc.	BRAD RQ 09.236.F

4.6. Transport Instruction Shipment Item

Class Diagram

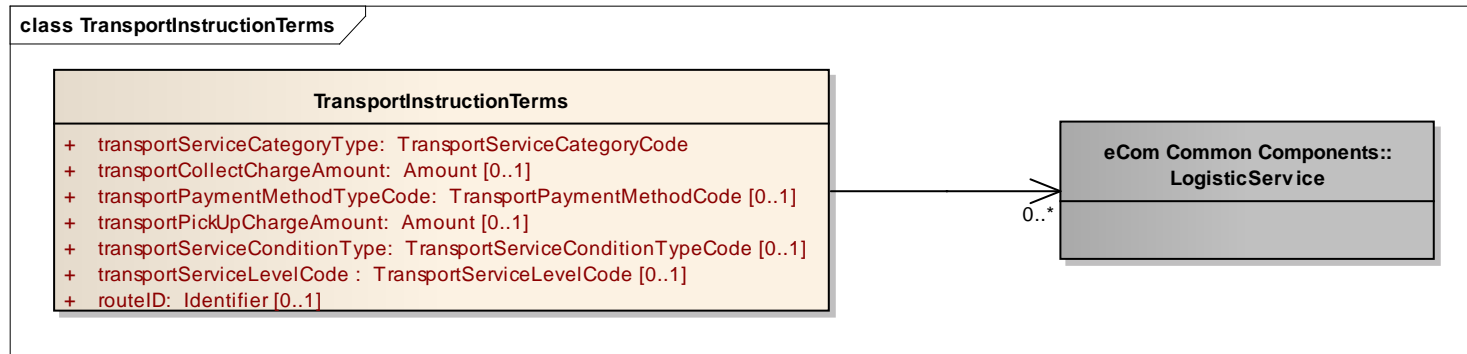


GDD Report

content	attribute / role	datatype / secondary class	multiplicity	definition	requirements
TransportInstructionShipmentItem				A <u>shipment item</u> is a (collection of) Trade Items and/or Logistic Units that can each be identified (uniquely) within a shipment.	
Association		PackageTotal	[0..*]	Aggregate information per type of package included in the shipment item.	BRAD SHI9, SHI13
Association		TransportReference	[0..*]	References to the commercial transaction or to transport or legal documents related to the shipment item.	BRAD SHI8
Association		LogisticUnit	[0..*]	Information on the logistic unit(s) included in the shipment item.	BRAD SHI1, SHI18
Association		TransactionalTradeItem	[0..*]	Information on the trade item(s) included in the shipment item.	BRAD SHI1, SHI3, SHI5, SHI16, SHI17
Association		HandlingInstruction	[0..*]	Handling instructions for the consignment item.	BRAD SHI6, SHI19
Association		DangerousGoodsInformation	[0..*]	Hazardous instructions for this shipment item, such as where or how specified packages or containers are to be handled because of restriction from dangerous goods.	BRAD SHI7
Association		TransportCargoCharacteristics	[0..1]	Aggregate information on the goods that are included in this shipment item.	
Attribute	lineItemNumber	positiveInteger	[1..1]	The sequence number for this shipment item.	BRAD SHI2
Attribute	note	Description500	[0..1]	Free text used to convey information that is not processed by applications. Only meant to present the information to a user as on a screen, in a browser, etc.	

4.7. Transport Instruction Terms

Class Diagram



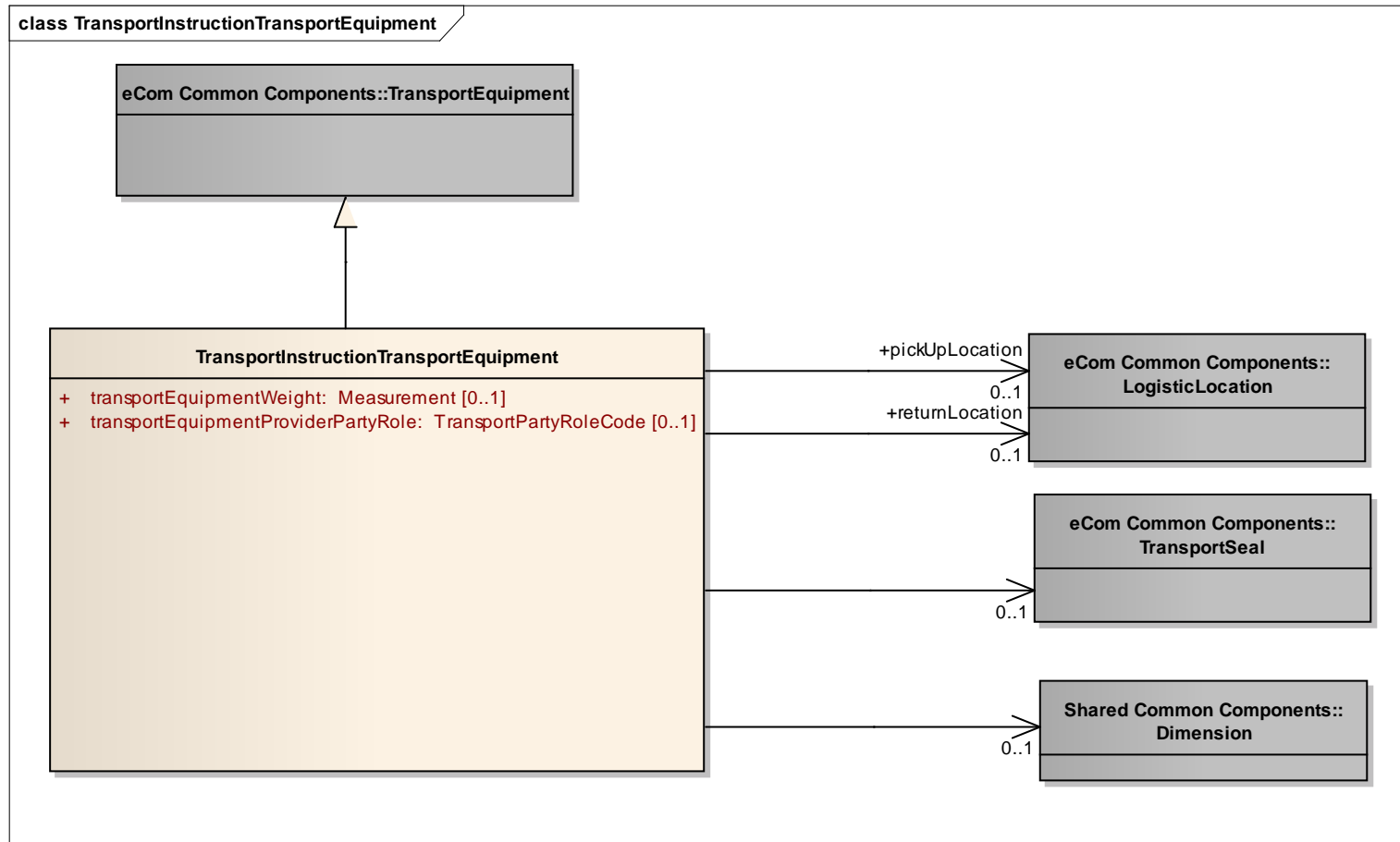
GDD Report

content	multipl icity	attribute / role	datatype /secondary class	definition	requirement s
TransportInstructionTerms				Information on the commercial conditions under which the requested transport services will be performed.#	
Association	[0..*]		LogisticService	Details on the additional services agreed as part of the transport instruction terms.#	
Attribute	[1..1]	transportServiceCatego ryType	TransportServiceCategory Code	Code specifying the type of transport service that will be provided. For example: Courier service. #	BRAD CON29, SHM26, SHM3
Attribute	[0..1]	transportCollectCharge Amount	Amount	The total monetary value of all freight and other service charges which are to be collected from the consignee at or after delivery of the goods.#	BRAD CON20
Attribute	[0..1]	transportPaymentMeth odTypeCode	TransportPaymentMethod Code	Code specifying the method of payment for the transport and service charges. #	BRAD CON11, SHM5

content	multipl icity	attribute / role	datatype /secondary class	definition	requirement s
Attribute	[0..1]	transportPickUpCharge Amount	Amount	The total monetary value of all freight and other service charges which are to be collected from the consignor at or after pick-up of the goods. #	BRAD CON20
Attribute	[0..1]	transportServiceCondi tionType	TransportServiceCondition TypeCode	Code specifying the type of contractual conditions applicable to these transport terms.#	BRAD CON29, SHM26
Attribute	[0..1]	transportServiceLevelC ode	TransportServiceLevelCod e	Code specifying the service level requested for the transport service. For example: Express service. #	BRAD CON29, SHM26
Attribute	[0..1]	routeID	Identifier	Unique identifier of the standard route that will be used for this shipment.	WR 12-202

4.8. Transport Instruction Transport Equipment

Class Diagram

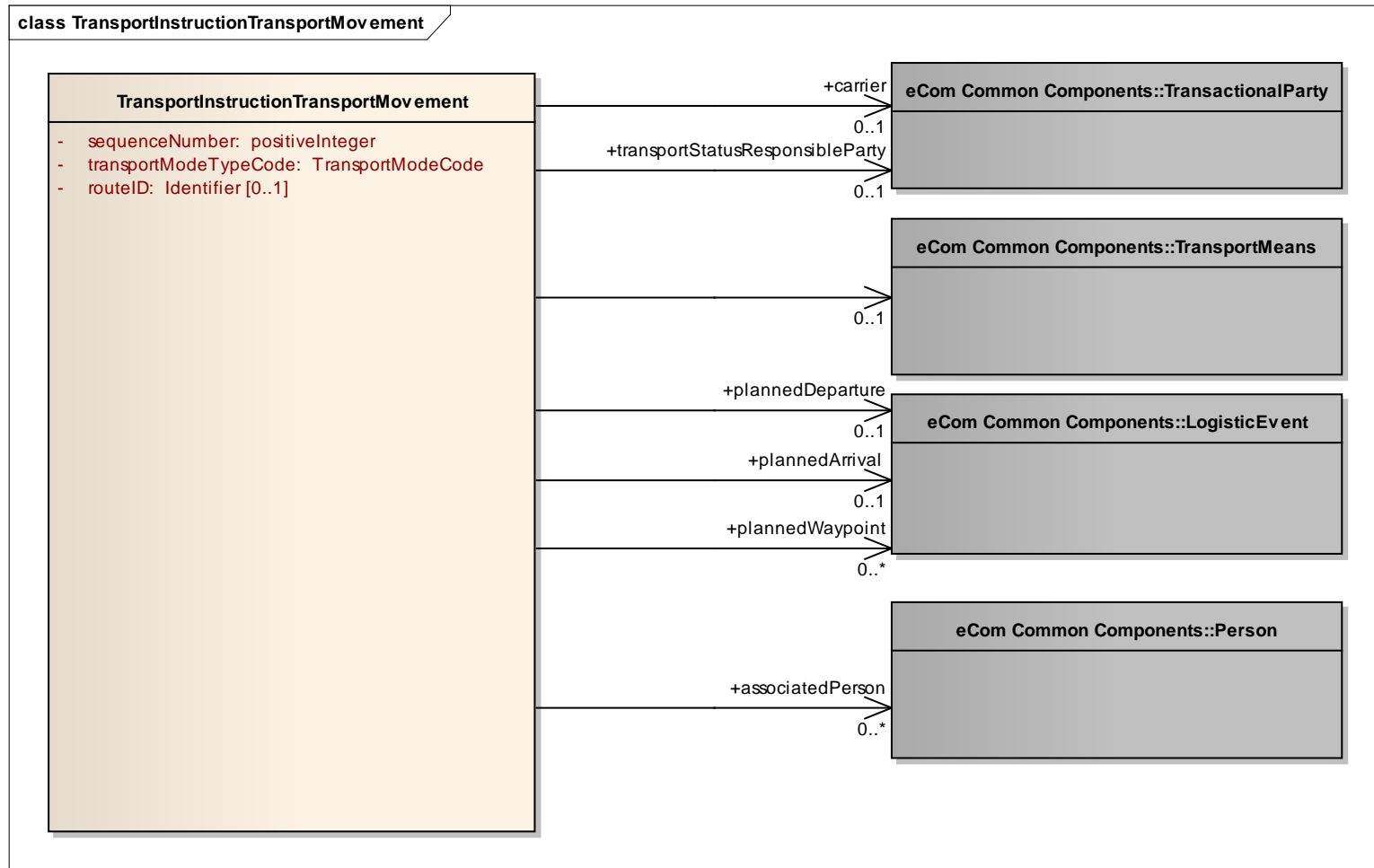


GDD Report

Content	Attribute / Role	Datatype /Secondary class	Multiplicity	Definition	Requirements
TransportInstructionTransportEquipment				<u>Transport equipment</u> is a piece of equipment used to hold, protect or secure cargo for logistics purposes. Transport Equipment is to be moved using Transport Means.	
Association		TransportSeal	0..1	Details on the seal affixed to this piece of transport equipment.	
Association	returnLocation	LogisticLocation	0..1	The physical location to where the equipment will be returned.	BRAD TEQ6
Association	pickUpLocation	LogisticLocation	0..1	The physical location from where the equipment will be collected.	BRAD TEQ5
Association		Dimension	0..1	The linear dimensions of this type of transport equipment.	
Generalization		TransportEquipment		Provides the generic identification details for the transport equipment.	
Attribute	transportEquipmentWeight	Measurement	0..1	A measure of the mass of this type of transport equipment.	
Attribute	transportEquipmentProviderPartyRole	TransportPartyRoleCode	0..1	The code specifying the role of the party responsible for supplying this piece of logistics transport equipment.	BRAD TEQ3

4.9. Transport Instruction Transport Movement

Class Diagram



GDD Report

content	multiplicity	attribute / role	datatype / secondary class	definition	requirements
TransportInstructionTransportMovement				The <u>transport movement</u> information specifies details of the movement of goods such as mode and means of transport, locations, departure, and arrival date(s) and time(s).	
Association	[0..*]	associatedPerson	Person	The name and/or identification of an individual associated with this transport movement.	BRAD TMV9
Association	[0..*]	plannedWaypoint	LogisticEvent	An administrative procedure taking place at a specific location that may have an effect on the lead time of a transport movement, such as dangerous goods handling, customs clearance, ...	
Association	[0..1]		TransportMeans	The type of vehicle, aircraft, vessel or other device used for the transport of goods in this transport movement	TMV19, TME1, TME2, TME3
Association	[0..1]	plannedArrival	LogisticEvent	The date, time, date time, or other date time value that the given party expects the means of transport for this transport movement to arrive at the designated arrival location.	BRAD TMV7, 13
Association	[0..1]	plannedDeparture	LogisticEvent	The date, time, date time, or other date time value that the given party expects the means of transport for this transport movement to depart from the designated departure location.	BRAD TMV6, TMV12
Association	[0..1]	carrier	TransactionalParty	A party that physically transports goods from one place to another.	BRAD TMV5
Association	[0..1]	transportStatusResponsibleParty	TransactionalParty	Party in charge of collecting and forwarding the information about the transport movement. #	BRAD TMV17, TMV18
Attribute	[1..1]	sequenceNumber	positiveInteger	Unique number identifying the sequence of this transport movement with respect to the other specified movements.#	

content	multiplicity	attribute / role	datatype / secondary class	definition	requirements
Attribute	[1..1]	transportModeTypeCode	TransportModeCode	Code specifying the transportation mode used for this transport movement. #	BRAD TMV2
Attribute	[0..1]	routeID	Identifier	Unique identifier of the standard route that will be used for this transport movement. #	BRAD TMV8

4.10. Enumerations (message specific)

4.10.1. TransportInstructionFunctionEnumeration

Code	Code Description
SHIPMENT	The transport instruction contains information on one or more shipments to be transported.
CONSIGNMENT	The transport instruction contains information on one or more consignments to be transported, and optionally also on shipments contained.

4.10.2. TransportInstructionResponseTypeEnumeration

Code	Code Description
FULLY_ACCEPTED	Fully accepted without amendments (only header information needs to be sent)
FULLY_REJECTED	Fully rejected (only header information needs to be sent)
FULLY_ACCEPTED_WITH_AMENDMENTS	Fully accepted with amendments / completed details (header and detail information needs to be sent).
PARTIALLY_ACCEPTED	Partially accepted, partially rejected (header and detail information needs to be sent)

4.10.3. TransportInstructionStatusEnumeration

Code	Code Description
CONFIRMED	The Logistic Services Seller confirms the instructed shipment / consignment without changes.
MODIFIED	The Logistic Services Seller modifies the instructed shipment / consignment.
CANCELLED	The Logistic Services Buyer cancels the instructed shipment / consignment
REJECTED	The Logistic Services Seller rejects the instructed shipment / consignment

4.11. Codelists



Note: Reference Shared Common Library Business Message (BMS) Release 3.0.0 and eCom Domain Common Library Business Message (BMS) Release 3.0.0 for all Code Lists

Class	Codelist	Referenced in
TransportInstructionConsignment TransportInstructionShipment	TransportInstructionStatusReasonCode	eCom Domain Common Library Business Message (BMS) Release 3.0.0
TransportInstructionTerms	TransportServiceCategoryCode	eCom Domain Common Library Business Message (BMS) Release 3.0.0
TransportInstructionTerms	TransportPaymentMethodCode	eCom Domain Common Library Business Message (BMS) Release 3.0.0
TransportInstructionTerms	TransportServiceConditionTypeCode	eCom Domain Common Library Business Message (BMS) Release 3.0.0

Class	Codelist	Referenced in
TransportInstructionTerms	TransportServiceLevelCode	eCom Domain Common Library Business Message (BMS) Release 3.0.0
TransportInstructionTransportEquipment	TransportPartyRoleCode	eCom Domain Common Library Business Message (BMS) Release 3.0.0
TransportInstructionTransportMovement	TransportModeCode	eCom Domain Common Library Business Message (BMS) Release 3.0.0

5. Business Message Examples

5.1. Transport Instruction – Domestic, 1 consignment, 1 truck, with logistic units

TransportInstruction	
creationDateTime	2011-01-12T12:00:00
documentStatusCode	ORIGINAL
transportInstructionFunction	CONSIGNMENT
EntityIdentification (+transportInstructionIdentification)	
uniqueCreatorIdentification	TRINS00001
TransactionalParty (+logisticServicesSeller)	
gln	4048623000003
TransactionalParty (+logisticServicesBuyer)	
gln	7365566156190
TransportInstructionConsignment	
ConsignmentIdentification	
ginc	7365566156191234567
TransactionalParty (+consignor)	
gln	7365566156190
TransactionalParty (+consignee)	
gln	7300011234566
TransportInstructionTerms	
transportServiceCategoryType	30
TransportCargoCharacteristics	
cargoTypeCode	21
cargoTypeDescription	General cargo (EN)
totalGrossVolume	3.5 (CBM)

totalGrossWeight	1500 (KGM)
totalPackageQuantity	5
TransportInstructionTransportMovement	
sequenceNumber	1
transportModeTypeCode	30
LogisticEvent (+plannedDeparture)	
DateOptionalTime (+logisticEventDateTime)	
date	2011-01-14
LogisticLocation	
Address	
city	Stockholm
LogisticEvent (+plannedArrival)	
LogisticLocation	
Address	
city	Lund
PackageTotal	
packageTypeCode	201
totalPackageQuantity	3
PackageTotal	
packageTypeCode	211
totalPackageQuantity	2
TransportInstructionConsignmentItem	
lineItemNumber	1
TransportCargoCharacteristics	
cargoTypeCode	21
cargoTypeDescription	Furniture (EN)
LogisticUnit (*)	
sscc	373655661561900018
packageTypeCode	201
LogisticUnit (*)	
sscc	373655661561900025
packageTypeCode	201
LogisticUnit (*)	
sscc	373655661561900032
packageTypeCode	201
LogisticUnit (*)	
sscc	373655661561900049

packageTypeCode	211
LogisticUnit (*)	
sscc	373655661561900056
packageTypeCode	211

5.2. Transport Instruction Response– Domestic, 1 consignment, 1 truck, with logistic units

TransportInstructionResponse	
creationDateTime	2011-01-13T12:00:00
documentStatusCode	ORIGINAL
responseType	FULLY_ACCEPTED_WITH_AMENDMENTS
EntityIdentification (+transportInstructionResponseIdentification)	
uniqueCreatorIdentification	TRINR00001
TransactionalParty (+logisticServicesSeller)	
gln	4048623000003
TransactionalParty (+logisticServicesBuyer)	
gln	7365566156190
DocumentReference (+transportInstruction)	
uniqueCreatorIdentification	TRINS00001
TransportInstructionConsignment	
ginc	7365566156191234567
TransactionalParty (+consignor)	
gln	7365566156190
TransactionalParty (+consignee)	
gln	7300011234566
TransportInstructionTerms	
transportServiceCategoryType	30
TransportCargoCharacteristics	
cargoTypeCode	21
cargoTypeDescription	General cargo (EN)
totalGrossVolume	3.5 (CBM)
totalGrossWeight	1500 (KGM)
totalPackageQuantity	5
TransportInstructionTransportMovement	
sequenceNumber	1
transportModeTypeCode	30
TransactionalParty (+carrier)	

gln	4048623000003
LogisticEvent (+plannedDeparture)	
LogisticLocation	
Address	
city	Stockholm
DateOptionalTime (+logisticEventDateTime)	
date	2011-01-14
time	08:00:00
LogisticEvent (+plannedArrival)	
LogisticLocation	
Address	
city	Lund
DateOptionalTime (+logisticEventDateTime)	
date	2011-01-14
time	17:00:00
PackageTotal	
packageTypeCode	201
totalPackageQuantity	3
PackageTotal	
packageTypeCode	211
totalPackageQuantity	2
TransportInstructionConsignmentItem	
lineItemNumber	1
TransportCargoCharacteristics	
cargoTypeCode	21
cargoTypeDescription	Furniture (EN)
LogisticUnit (*)	
sscc	373655661561900018
packageTypeCode	201
LogisticUnit (*)	
sscc	373655661561900025
packageTypeCode	201
LogisticUnit (*)	
sscc	373655661561900032
packageTypeCode	201
LogisticUnit (*)	
sscc	373655661561900049
packageTypeCode	211

LogisticUnit (*)	
sscc	373655661561900056
packageTypeCode	211

5.3. Transport Instruction – Domestic, 1 shipment, 1 truck, with logistic units

TransportInstruction	
creationDateTime	2011-01-12T12:00:00
documentStatus	ORIGINAL
transportInstructionFunction	SHIPMENT
EntityIdentification (+transportInstructionIdentification)	
uniqueCreatorIdentification	TRINS00002
TransactionalParty (+logisticServicesSeller)	
gln	4048623000003
TransactionalParty (+logisticServicesBuyer)	
gln	7365566156190
TransportInstructionShipment	
gsin	73655661561900123
TransactionalParty (+receiver)	
gln	7300011234566
TransactionalParty (+shipper)	
gln	7365566156190
TransactionalParty (+shipTo)	
Address	
city	Lund
postalCode	22478
streetAddressOne	Glimmervägen 125
TransportInstructionTerms	
transportServiceCategoryType	30
TransportCargoCharacteristics	
cargoTypeCode	21
cargoTypeDescription	General cargo (EN)
totalGrossVolume	3.5 (CBM)
totalGrossWeight	1500 (KGM)
totalPackageQuantity	5
LogisticEvent (+plannedDelivery)	

DateOptionalTime (+logisticEventDateTime)	
date	2011-01-18
PackageTotal (*)	
packageTypeCode	201
totalPackageQuantity	3
PackageTotal (*)	
packageTypeCode	211
totalPackageQuantity	2
TransportInstructionShipmentItem (*)	
lineItemNumber	1
LogisticUnit (*)	
sscc	373655661561900018
packageTypeCode	201
LogisticUnit (*)	
sscc	373655661561900025
packageTypeCode	201
LogisticUnit (*)	
sscc	373655661561900032
packageTypeCode	201
TransactionalTradeltem	
gtin	03736556615609
tradeltemQuantity	3
TransportInstructionShipmentItem (*)	
lineItemNumber	2
LogisticUnit (*)	
sscc	373655661561900049
packageTypeCode	211
tradeltemQuantity	10
LogisticUnit (*)	
sscc	373655661561900056
packageTypeCode	211
tradeltemQuantity	10
TransactionalTradeltem	
gtin	03736556615616
tradeltemQuantity	20

6. Implementation Considerations

(Insert Content Here)

7. Appendices

Not Applicable

8. Summary of Changes

8.1. BMS Release 3.0

First publication.

8.2. BMS Release 3.1

Change	Version	Associated CR Number
<div><div>class TransportInstructionTerms - maintenance view</div><div><div>TransportInstructionTerms</div><div><div>+ transportServiceCategoryType: TransportServiceCategoryCode</div><div>+ transportCollectChargeAmount: Amount [0..1]</div><div>+ transportPaymentMethodTypeCode: TransportPaymentMethodCode [0..1]</div><div>+ transportPickUpChargeAmount: Amount [0..1]</div><div>+ transportServiceConditionType: TransportServiceConditionTypeCode [0..1]</div><div>+ transportServiceLevelCode : TransportServiceLevelCode [0..1]</div><div>+ routeID: Identifier [0..1]</div></div><div><div>maintenance</div><div>Change: (Verified) added routeID (WR 12-202)</div></div></div></div>	Draft 1	WR 12-202