



# Warehouse Inbound Instruction and Notification

## Business Message Standard (BMS)

*Release 3.2*

*01-Dec-2014, Issue 1*



## Document Summary

Document Item	Current Value
Document Title	Business Message Standard (BMS) - Warehouse Inbound Instruction and Notification
BMS Release	3.2
Document Version	Issue 1, 01-Dec-2014
Work Group Name	eCom SMG
BMS Template Version	2.4

## Work Request Reference

Date of WR Submission to GSMP:	WR Submitter(s):	Refer to Work Request (WR) Number(s):
25-Jun-2014	GS1 Global Office	14-000110

## Business Requirements Document (BRAD) Reference

BRAD Title	BRAD Issue Date	BRAD Version
Warehousing Inbound and Outbound processes	25-Jul-2012	1.0

## Document Change History

Date of Change	Version	Changed By	Reason for Change	Summary of Change
12-Jan-2012	BMS 3.0 – Issue 1	Mark Van Eeghem	BMS Release 3.0	See summary of changes
01-May-2013	BMS 3.1 – Issue 1	Coen Janssen	BMS Release 3.1	See summary of changes
01-Dec-2014	BMS 3.2 – Issue 1	Ewa Iwicka	BMS Release 3.2	See summary of changes

## Disclaimer

WHILST EVERY EFFORT HAS BEEN MADE TO ENSURE THAT THE GUIDELINES TO USE THE GS1 STANDARDS CONTAINED IN THE DOCUMENT ARE CORRECT, GS1 AND ANY OTHER PARTY INVOLVED IN THE CREATION OF THE DOCUMENT HEREBY STATE THAT THE DOCUMENT IS PROVIDED WITHOUT WARRANTY, EITHER EXPRESSED OR IMPLIED, REGARDING ANY MATTER, INCLUDING BUT NOT LIMITED TO THE OF ACCURACY, MERCHANTABILITY OR FITNESS FOR A PARTICULAR PURPOSE, AND HEREBY DISCLAIM ANY AND ALL LIABILITY, DIRECT OR INDIRECT, FOR ANY DAMAGES OR LOSS RELATING TO OR RESULTING FROM THE USE OF THE DOCUMENT. THE DOCUMENT MAY BE MODIFIED, SUBJECT TO DEVELOPMENTS IN TECHNOLOGY, CHANGES TO THE STANDARDS, OR NEW LEGAL REQUIREMENTS. SEVERAL PRODUCTS AND COMPANY NAMES MENTIONED HEREIN MAY BE TRADEMARKS AND/OR REGISTERED TRADEMARKS OF THEIR RESPECTIVE COMPANIES. GS1 IS A REGISTERED TRADEMARK OF GS1 AISBL.

# Table of Contents

<b>1. Business Domain View .....</b>	<b>4</b>
1.1. Introduction.....	4
1.2. References .....	4
<b>2. Business Context .....</b>	<b>4</b>
<b>3. Business Transaction View .....</b>	<b>5</b>
3.1. Business Transaction – Issue Inbound Instruction .....	5
3.2. Business Transaction – Issue Inbound Notification .....	6
<b>4. Business Information View .....</b>	<b>8</b>
4.1. Warehousing Inbound Instruction .....	8
4.2. Warehousing Inbound Instruction – Shipment .....	10
4.3. Warehousing Inbound Instruction – Shipment Item .....	12
4.4. Warehousing Inbound Notification .....	13
4.5. Warehousing Inbound Notification – Shipment .....	15
4.6. Warehousing Inbound Notification – Shipment Item .....	17
4.7. Data Types (Warehousing Inbound Instruction) .....	18
4.8. Data Types (Warehousing Inbound Notification) .....	19
4.9. Code Lists .....	20
<b>5. Business Message Examples .....</b>	<b>20</b>
5.1. Example 1 .....	20
5.2. Example 2 .....	22
<b>6. Implementation Considerations .....</b>	<b>23</b>
6.1. User Guide .....	23
6.2. Message Specific Considerations .....	23
<b>7. Summary of Changes .....</b>	<b>24</b>
7.1. BMS Release 3.1 .....	24
7.2. BMS Release 3.2 .....	25
<b>8. Appendices .....</b>	<b>26</b>
<b>9. Acknowledgements .....</b>	<b>26</b>
9.1.1. Work Group .....	26
9.1.2. Development Team Members .....	26

# 1. Business Domain View

## 1.1. Introduction

### Message Definition

#### Warehousing Inbound Instruction Message Definition

The Warehousing Inbound Instruction message enables a Logistic Services Client (LSC) to inform his Logistic Services Provider (LSP) that goods will be arriving.

#### Warehousing Inbound Notification Message Definition

The Warehousing Inbound Notification message enables a Logistic Services Provider (LSP) to inform his Logistic Services Client (LSC) on the status of goods received on behalf of the client.

### Principles

These messages support the warehouse inbound process.

## 1.2. References

[LIM] GS1 Logistics Interoperability Model, 1.0, GS1 2007

[BRAD\_WIO] BRAD Warehousing Inbound and Outbound Processes, 1.0, GS1 2012

[BMS\_Shared] BMS Shared Common Library, 3.2, GS1 2014

[BMS\_eCom] BMS eCom Common Library, 3.2, GS1 2014

[BMS\_Warehousing] BMS Warehousing Common Library, 3.2, GS1 2014

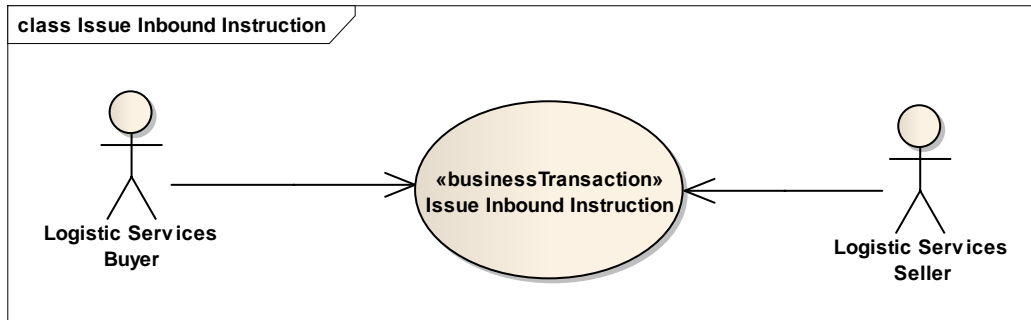
# 2. Business Context

Context Category	Value(s)
Industry	All
Geopolitical	All
Product	All
Process	Warehousing – Inbound Operations
System Capabilities	GS1 System
Official Constraints	None

### 3. Business Transaction View

#### 3.1. Business Transaction – Issue Inbound Instruction

##### Use case diagram



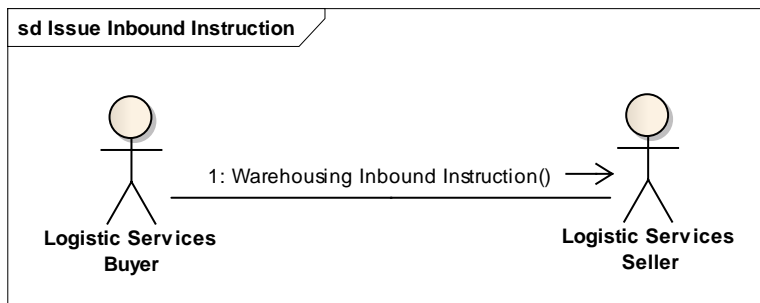
##### Use case description

Use Case Name	Issue Warehousing Inbound Instruction
Use Case Description	The Logistic Services Buyer (LSB) informs the Logistic Services Seller (LSS) that a shipment will be delivered to the warehouse.
Actors (Goal)	Logistic Services Buyer (LSB) Logistic Services Seller (LSS)
Performance Goals	Not applicable
Preconditions	Item master data of the goods to be received have been communicated to the Logistic Services Seller.
Post conditions	The Logistic Services Seller has been informed on the goods to be received.
Main Scenario	<ul style="list-style-type: none"> <li>LSB generates the Warehousing Inbound Instruction from his (enterprise resource planning) system.</li> <li>LSB sends the Warehousing Inbound Instruction to the LSS.</li> <li>LSS receives the Warehousing Inbound Instruction.</li> <li>LSS processes the Warehousing Inbound Instruction in his (warehouse management) system.</li> </ul>
Alternative Scenario(s)	Not applicable
Related Requirements	
Related Rules	

##### Activity diagram

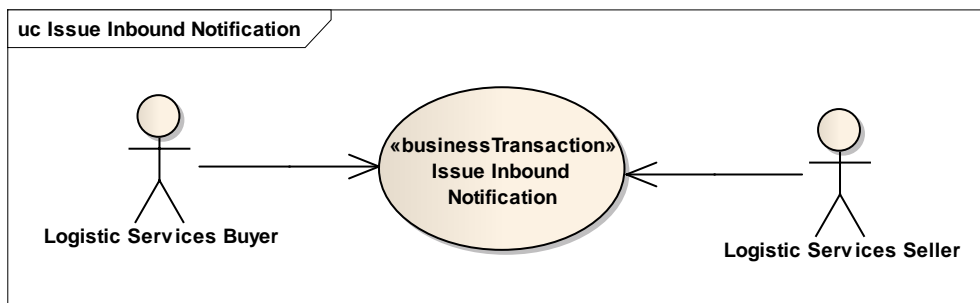
Not applicable

### Communication diagram



## 3.2. Business Transaction – Issue Inbound Notification

### Use case diagram



### Use case description

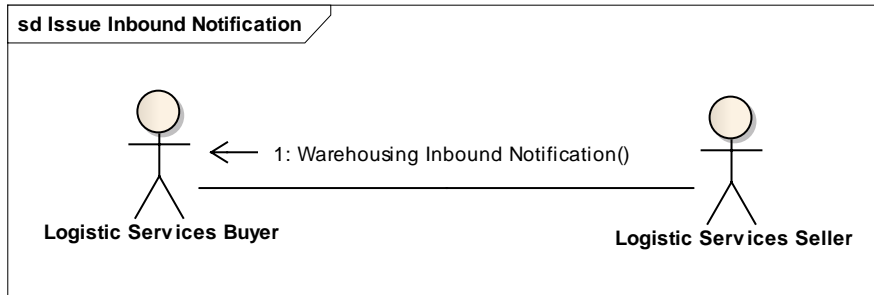
Use Case Name	Issue Warehousing Inbound Notification
Use Case Description	The Logistic Services Seller (LSS) informs the Logistic Services Buyer (LSB) on the status of a shipment that will be / has been received in the warehouse.
Actors (Goal)	Logistic Services Buyer (LSB) Logistic Services Seller (LSS)
Performance Goals	Not applicable
Preconditions	<ul style="list-style-type: none"> <li>Item master data of the goods to be received have been communicated to the Logistic Services Seller.</li> <li>The Logistic Services Seller has been informed on the goods to be received. Exception to this condition is the situation where 'spontaneous receipts are allowed.</li> </ul>
Post conditions	The Logistic Services Buyer has been informed on status of the inbound shipment.
Main Scenario	<ul style="list-style-type: none"> <li>LSS generates the Warehousing Inbound Notification from his (warehouse management) system.</li> <li>LSS sends the Warehousing Inbound Notification to the LSB.</li> <li>LSB receives the Warehousing Inbound Notification.</li> <li>LSB processes the Warehousing Inbound Notification in his (enterprise resource planning) system.</li> </ul>
Alternative Scenario(s)	Not applicable
Related Requirements	

Related Rules	

### Activity diagram

Not applicable

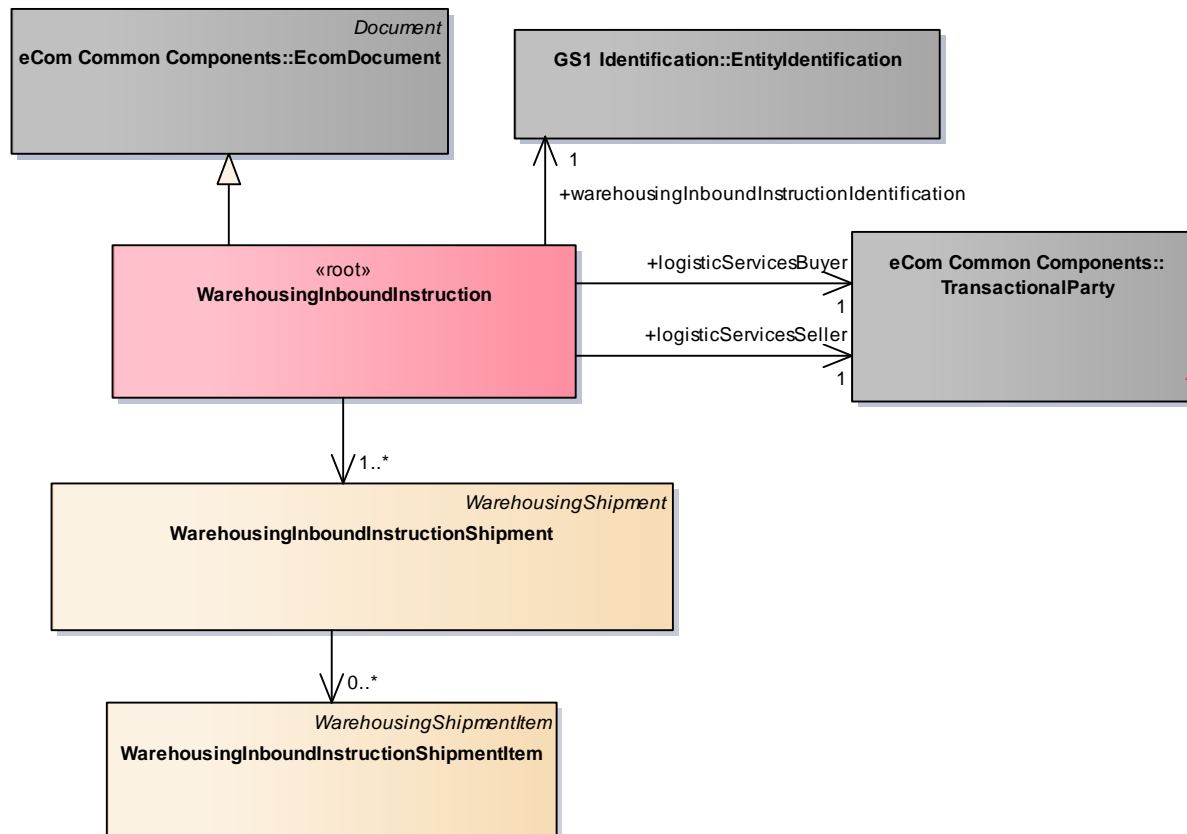
### Communication diagram



## 4. Business Information View

### 4.1. Warehousing Inbound Instruction

#### Class Diagram





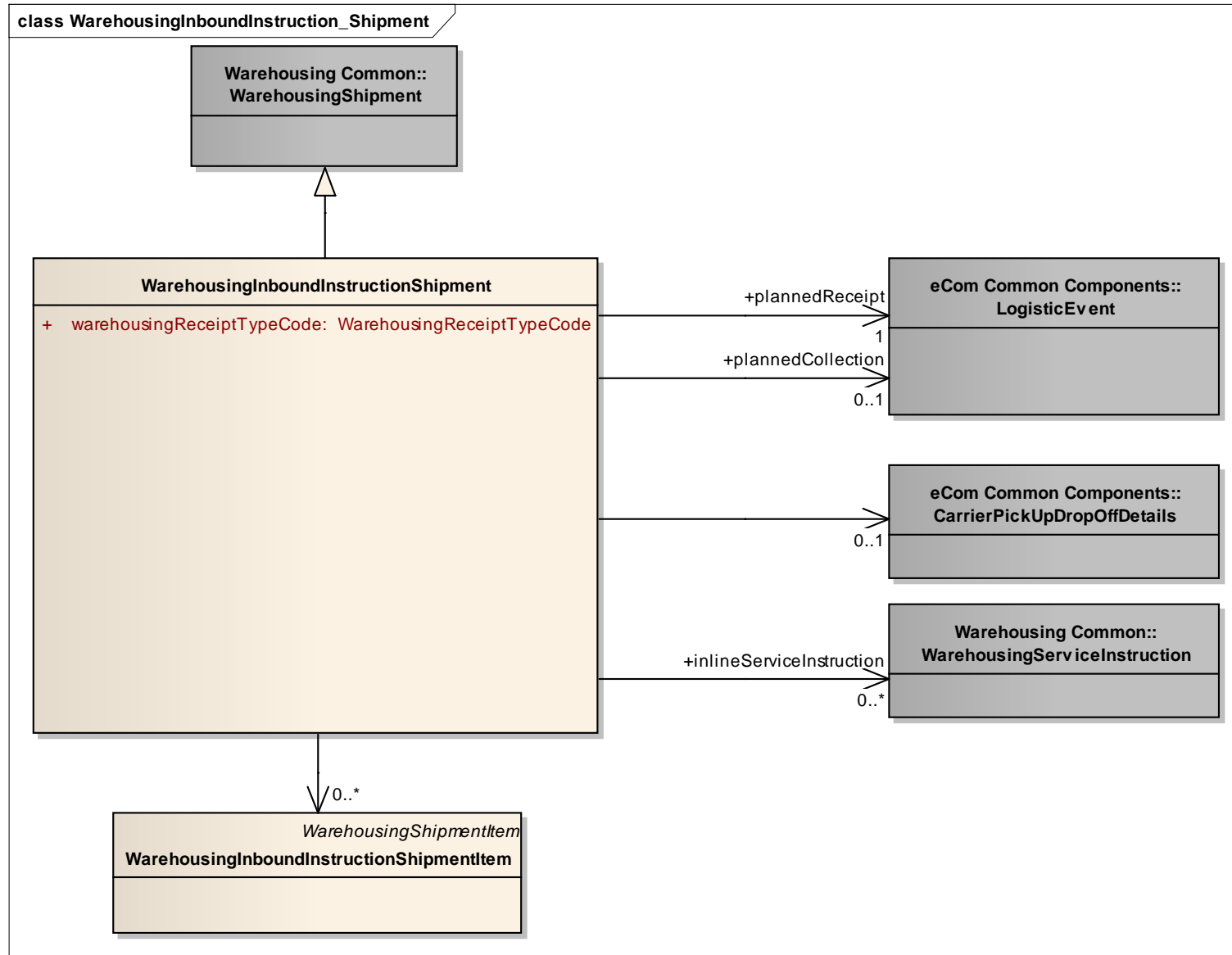
## GDD Report

The content of the WarehousingInboundInstruction class, its structure and component definitions can be accessed in the Global Data Dictionary: [http://apps.gs1.org/GDD/bms/Version3\\_2/Pages/bieDetails.aspx?semanticURN=urn:gs1:gdd:bie:WarehousingInboundInstruction](http://apps.gs1.org/GDD/bms/Version3_2/Pages/bieDetails.aspx?semanticURN=urn:gs1:gdd:bie:WarehousingInboundInstruction)

Content	Attribute / Role	Datatype /Secondary class	Multiplicity	Definition	Requirements
WarehousingInboundInstruction				Message that supports the warehouse inbound process, and enables a Logistic Services Client (LSC) to inform his Logistic Services Provider (LSP) that goods will be arriving.	
Association	logisticServicesSeller	TransactionalParty	1..1	A party that provides logistics services to another party.	
Association		WarehousingInboundInstructionShipment	1..*	Information on the shipments that need to be received by the logistics services seller.	
Association	warehousingInboundInstructionIdentification	EntityIdentification	1..1	The identification of the warehousing inbound instruction document.	
Generalization		EcomDocument		Basic information about the content of the message including version number, creation date and time.	WR 14-000110
Association	logisticServicesBuyer	TransactionalParty	1..1	A party that purchases logistics services from another party.	

## 4.2. Warehousing Inbound Instruction – Shipment

### Class Diagram



## GDD Report

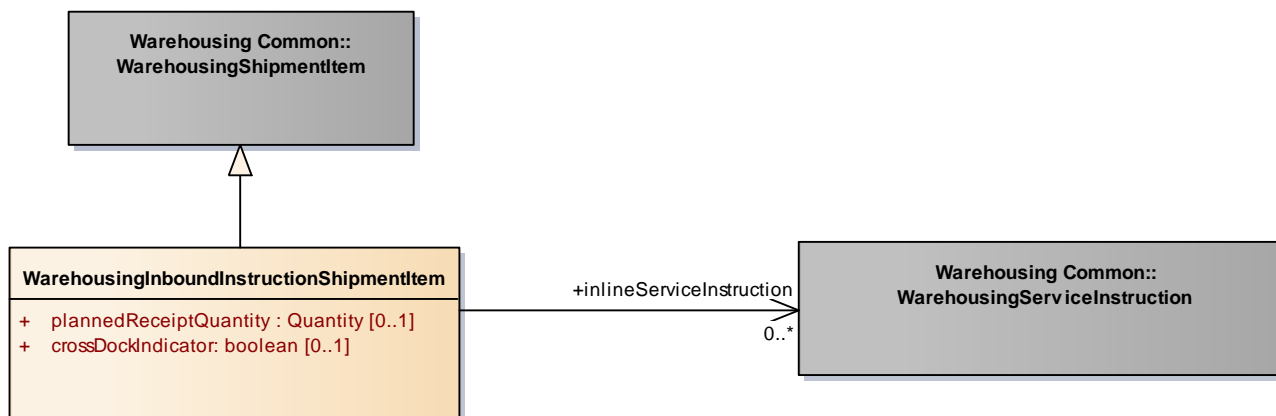
The content of the WarehousingInboundInstructionShipment class, its structure and component definitions can be accessed in the Global Data Dictionary:

[http://apps.gs1.org/GDD/bms/Version3\\_2/Pages/bieDetails.aspx?semanticURN=urn:gs1:gdd:bie:WarehousingInboundInstructionShipment](http://apps.gs1.org/GDD/bms/Version3_2/Pages/bieDetails.aspx?semanticURN=urn:gs1:gdd:bie:WarehousingInboundInstructionShipment)

Content	Attribute / Role	Datatype /Secondary class	Multiplicity	Definition	Requirements
<b>WarehousingInboundInstructionShipment</b>				A shipment is an identifiable collection of one or more Trade Items available to be transported together from the shipper (Original Consignor/Shipper), to the receiver (Final/Ultimate Consignee).	
Association		WarehousingInboundInstructionShipmentItem	0..*	Details on the items contained in the shipment.	
Association	inlineServiceInstruction	WarehousingServiceInstruction	0..*	Details on one or more services to be performed by the logistic services seller during inbound processing.	[brad-whiop:insrec_4.5]
Association		CarrierPickUpDropOffDetails	0..1	Details on the carrier that will deliver the goods.	[brad-wio:insrec_4.4]
Association	plannedCollection	LogisticEvent	0..1	The date and time goods need to be collected from a rail terminal, sea port, airport or inland container terminal. This element is not intended to be used for the pick-up at supplier scenario.	[brad-whiop:insrec_4.2]
Association	plannedReceipt	LogisticEvent	1..1	Date and time the goods are planned to be delivered.	[brad-whiop:insrec_4.1]
Generalization		WarehousingShipment			
Attribute	warehousingReceiptTypeCode	WarehousingReceiptTypeCode	1..1	Code specifying the type of receipt, in order to inform the receiving party how to process the receipt.	[brad-whiop:insrec-4.3]

## 4.3. Warehousing Inbound Instruction – Shipment Item

### Class Diagram



### GDD Report

The content of the WarehousingInboundInstruction\_ ShipmentItem class, its structure and component definitions can be accessed in the Global Data Dictionary:

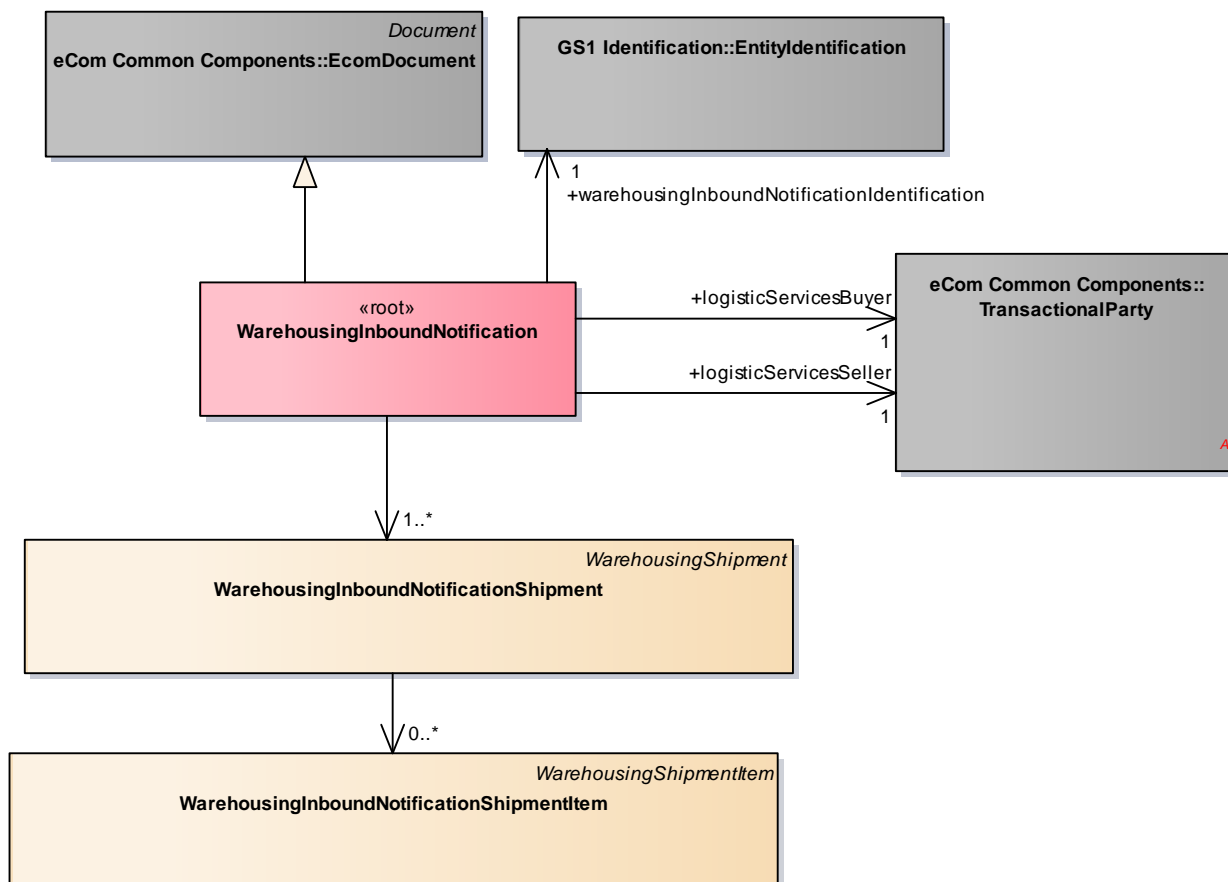
[http://apps.gs1.org/GDD/bms/Version3\\_2/Pages/bieDetails.aspx?semanticURN=urn:gs1:gdd:bie:WarehousingInboundInstruction\\_ShipmentItem](http://apps.gs1.org/GDD/bms/Version3_2/Pages/bieDetails.aspx?semanticURN=urn:gs1:gdd:bie:WarehousingInboundInstruction_ShipmentItem)

Content	Attribute / Role	Datatype /Secondary class	Multiplicity	Definition	Requirements
WarehousingInboundInstructionShipmentItem				A shipment item is collection of trade items and related logistic units that can each be identified (uniquely) within a shipment.	
Generalization		WarehousingShipmentItem			
Association	inlineServiceInstruction	WarehousingServiceInstruction	0..*	Details on one or more services to be performed by the logistic services seller during inbound processing.	[brad-whiop:insrec_5.2]
Attribute	plannedReceiptQuantity	Quantity	0..1	The quantity that is ordered / planned to be received.	[brad-whiop:insrec_5.1]

Content	Attribute / Role	Datatype /Secondary class	Multiplicity	Definition	Requirements
Attribute	crossDockIndicator	boolean	0..1	Indication whether or not the received shipment item needs to be cross-docked instead of put into storage.	

## 4.4. Warehousing Inbound Notification

### Class Diagram



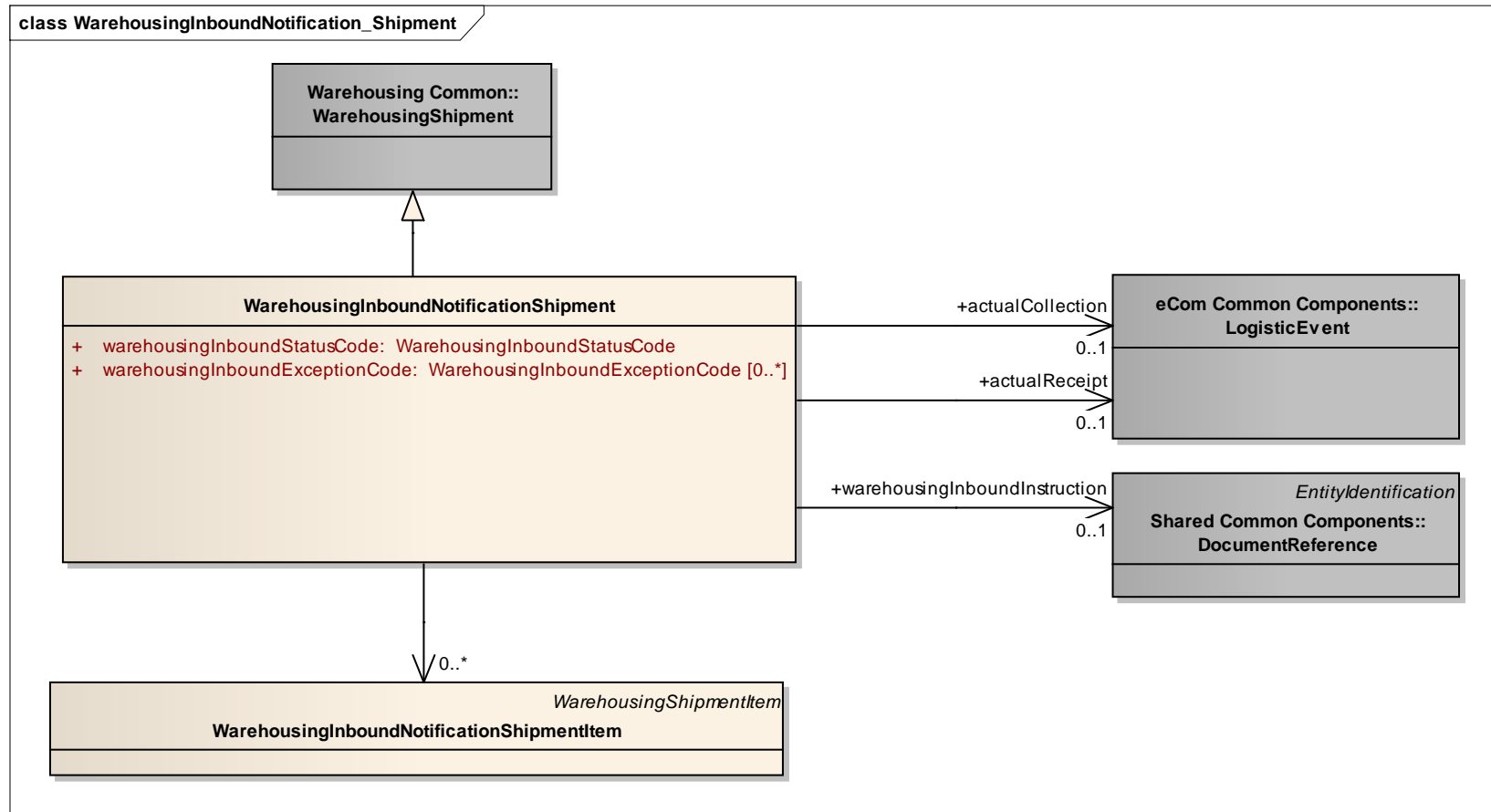
## GDD Report

The content of the WarehousingInboundNotification class, its structure and component definitions can be accessed in the Global Data Dictionary: [http://apps.gs1.org/GDD/bms/Version3\\_2/Pages/bieDetails.aspx?semanticURN=urn:gs1:gdd:bie:WarehousingInboundNotification](http://apps.gs1.org/GDD/bms/Version3_2/Pages/bieDetails.aspx?semanticURN=urn:gs1:gdd:bie:WarehousingInboundNotification)

Content	Attribute / Role	Datatype /Secondary class	Multiplicity	Definition	Requirements
WarehousingInboundNotification				Message that supports the warehouse inbound process, and enables a Logistic Services Provider (LSP) to inform his Logistic Services Client (LSC) on the status of goods received on behalf of the client.	
Association	logisticServicesSeller	TransactionalParty	1..1	A party that provides logistics services to another party.	[brad_wio:ibsta-3]
Association	logisticServicesBuyer	TransactionalParty	1..1	A party that purchases logistics services from another party.	[brad_wio:ibsta-2]
Association		WarehousingInboundNotificationShipment	1..*	Status information on the shipments that have been received or are expected to be received.	[brad_wio:ibsta-4.3]
Generalization		EcomDocument		Basic information about the content of the message including version number, creation date and time.	WR 14-000110
Association	warehousingInboundNotificationIdentification	EntityIdentification	1..1	The identification of the warehousing inbound notification document.	[brad_wio:ibsta-1]

## 4.5. Warehousing Inbound Notification – Shipment

### Class Diagram



## GDD Report

The content of the WarehousingInboundNotificationShipment class, its structure and component definitions can be accessed in the Global Data Dictionary:

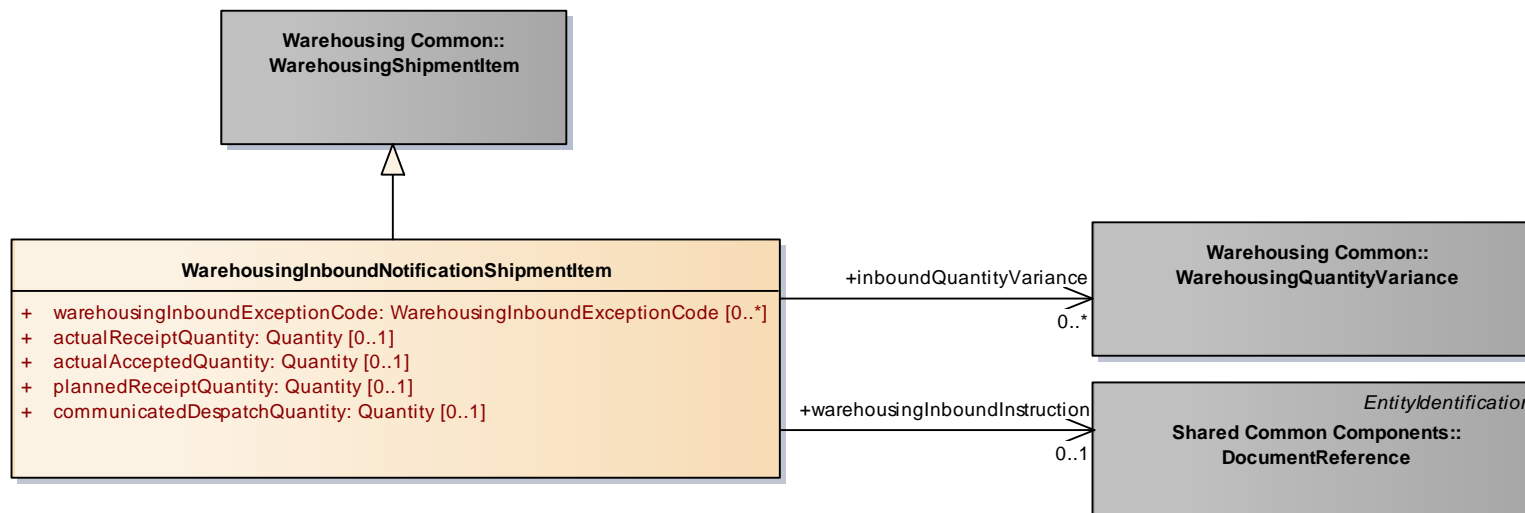
[http://apps.gs1.org/GDD/bms/Version3\\_2/Pages/bieDetails.aspx?semanticURN=urn:gs1:gdd:bie:WarehousingInboundNotificationShipment](http://apps.gs1.org/GDD/bms/Version3_2/Pages/bieDetails.aspx?semanticURN=urn:gs1:gdd:bie:WarehousingInboundNotificationShipment)

Content	Attribute / Role	Datatype /Secondary class	Multiplicity	Definition	Requirements
<b>WarehousingInboundNotificationShipment</b>					
Association	actualCollection	LogisticEvent	0..1	Details on the date and time the goods were collected from a rail terminal, sea port, airport or inland container terminal.	[brad_wio:ibsta-4.5]
Association		WarehousingInboundNotificationShipmentItem	0..*	Details on the items contained in the shipment.	[brad_wio:ibsta-5]
Association	actualReceipt	LogisticEvent	0..1	Details on the date and time the goods were received in the warehouse.	[brad_wio:ibsta-4.4]
Association	warehousingInboundInstruction	DocumentReference	0..1	A reference to the related line item in the inbound instruction.	
Generalization		WarehousingShipment			
Attribute	warehousingInboundStatusCode	WarehousingInboundStatusCode	1..1	Code specifying the status of the inbound shipment.	[brad_wio:ibsta-4.2]
Attribute	warehousingInboundExceptionCode	WarehousingInboundExceptionCode	0..*	Code specifying an exception that occurred in the inbound shipment.	[brad_wio:ibsta-4.3]



## 4.6. Warehousing Inbound Notification – Shipment Item

### Class Diagram



### GDD Report

The content of the **WarehousingInboundNotificationShipmentItem** class, its structure and component definitions can be accessed in the Global Data Dictionary:

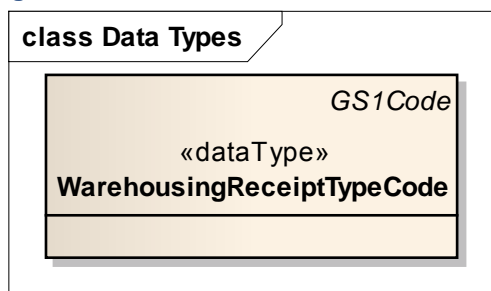
[http://apps.gs1.org/GDD/bms/Version3\\_2/Pages/bieDetails.aspx?semanticURN=urn:gs1:gdd:bie:WarehousingInboundNotificationShipmentItem](http://apps.gs1.org/GDD/bms/Version3_2/Pages/bieDetails.aspx?semanticURN=urn:gs1:gdd:bie:WarehousingInboundNotificationShipmentItem)

Content	Attribute / Role	Datatype /Secondary class	Multiplicity	Definition	Requirements
WarehousingInboundNotificationShipmentItem				A shipment item is collection of trade items and related logistic units that can each be identified (uniquely) within a shipment.	
Association	inboundQuantityVariance	WarehousingQuantityVariance	0..*	Quantity and reason of a shortage or surplus occurring in a warehousing process.	[brad_wio:ibsta-5.7]
Association	warehousingInboundInstruction	DocumentReference	0..1	A reference to the related line item in the inbound instruction.	

Content	Attribute / Role	Datatype /Secondary class	Multiplicity	Definition	Requirements
Generalization		WarehousingShipmentItem			
Attribute	warehousingInboundExceptionCode	WarehousingInboundExceptionCode	0..*	Code specifying an exception that occurred in the inbound shipment.	[brad_wio:ibsta-5.2]
Attribute	actualReceiptQuantity	Quantity	0..1	The number of items that were received.	[brad_wio:ibsta-5.3]
Attribute	actualAcceptedQuantity	Quantity	0..1	The number of items that were accepted.	[brad_wio:ibsta-5.4]
Attribute	plannedReceiptQuantity	Quantity	0..1	The number of items that were planned to be received, as stated in the inbound instruction.	[brad_wio:ibsta-5.5]
Attribute	communicatedDespatchQuantity	Quantity	0..1	The number of items that were despatched, as stated in the despatch advice sent by the shipper.	[brad_wio:ibsta-5.6]

## 4.7. Data Types (Warehousing Inbound Instruction)

### Class Diagram



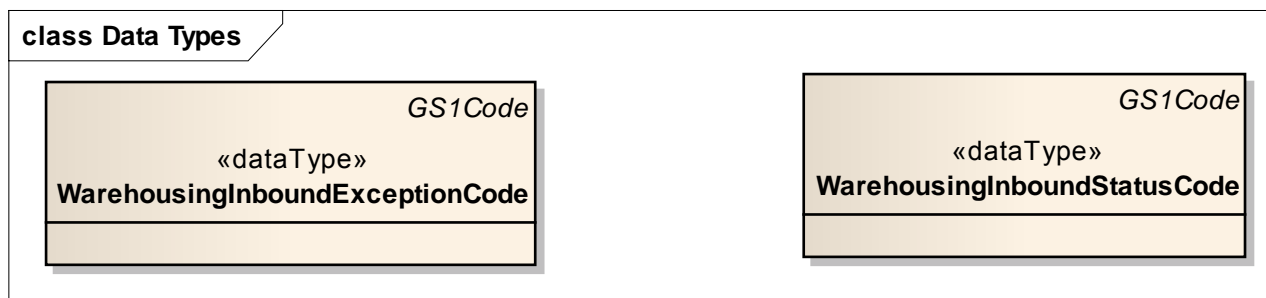
### GDD Report

Content	Attribute / Role	Datatype /Secondary class	Multiplicity	Definition	Code List
WarehousingReceiptTypeCode					urn:gs1:gdd:cl:WarehousingReceiptTypeCode

Content	Attribute / Role	Datatype /Secondary class	Multiplicity	Definition	Code List
Generalization		GS1Code			

## 4.8. Data Types (Warehousing Inbound Notification)

### Class Diagram



### GDD Report

Content	Attribute / Role	Datatype /Secondary class	Multiplicity	Definition	Code List
WarehousingInboundExceptionCode					urn:gs1:gdd:cl:WarehousingInboundExceptionCode
Generalization		GS1Code			
WarehousingInboundStatusCode					urn:gs1:gdd:cl:WarehousingInboundStatusCode
Generalization		GS1Code			



**Note:** Reference Shared Common Library Business Message (BMS) Release 3.2.0 and eCom Domain Common Library Business Message (BMS) Release 3.2.0 for all common information.

## 4.9. Code Lists

Class	Codelist	GDD Link
WarehousingInboundInstructionShipment	WarehousingReceiptTypeCode	<a href="http://apps.gs1.org/GDD/Pages/clDetails.aspx?semanticURN=urn:gs1:gdd:cl:WarehousingReceiptTypeCode">http://apps.gs1.org/GDD/Pages/clDetails.aspx?semanticURN=urn:gs1:gdd:cl:WarehousingReceiptTypeCode</a>
WarehousingInboundNotificationShipment, WarehousingInboundNotificationShipmentItem	WarehousingInboundExceptionCode	<a href="http://apps.gs1.org/GDD/Pages/clDetails.aspx?semanticURN=urn:gs1:gdd:cl:WarehousingInboundExceptionCode">http://apps.gs1.org/GDD/Pages/clDetails.aspx?semanticURN=urn:gs1:gdd:cl:WarehousingInboundExceptionCode</a>
WarehousingInboundNotificationShipment	WarehousingInboundStatusCode	<a href="http://apps.gs1.org/GDD/Pages/clDetails.aspx?semanticURN=urn:gs1:gdd:cl:WarehousingInboundStatusCode">http://apps.gs1.org/GDD/Pages/clDetails.aspx?semanticURN=urn:gs1:gdd:cl:WarehousingInboundStatusCode</a>



**Note:** Refer to the Global Data Dictionary (GDD) for the code values.

## 5. Business Message Examples

### 5.1. Example 1

This is an example of the Warehousing Inbound Instruction message.

#### Party Information

GS1 Global Location Number	Party Type
3333333000001	Logistic Services Seller
2222222000004	Logistic Services Buyer
1111111000007	Shipper
3333333000018	Receiver

#### Message Example 1

Attribute	Value
<b>WarehousingInboundInstruction</b>	
creationDateTime	2012-07-11 12:15
documentStatusCode	ORIGINAL
documentActionCode	ADD
<b>TransactionalParty (+logisticServicesSeller)</b>	
gln	3333333000001
<b>TransactionalParty (+logisticServicesBuyer)</b>	
gln	2222222000004
<b>EntityIdentification (+warehousingInboundInstructionIdentification)</b>	
entityIdentification	INSREC00123
<b>WarehousingInboundInstructionShipment</b>	

Attribute	Value
warehousingReceiptTypeCode	PRIORITY_RECEIPT
<b>TransactionalParty (+receiver)</b>	
gln	3333333000018
<b>TransactionalParty (+shipper)</b>	
gln	1111111000007
<b>ShipmentIdentification (+)</b>	
gsin	11111110000834053
<b>PackageTotal (+)</b>	
packageTypeCode	AF
totalPackageQuantity	2
<b>LogisticUnit (+)</b>	
packageTypeCode	: AF
<b>LogisticUnitIdentification (+)</b>	
sscc	311111110000123455
<b>LogisticUnit (+)</b>	
packageTypeCode	AF
<b>LogisticUnitIdentification (+)</b>	
sscc	311111110000123554
<b>CarrierPickUpDropOffDetails (+)</b>	
<b>TransportMeans (+)</b>	
transportMeansTypeCode	31
transportMeansID	11-BB-AA
Person (+transportResponsiblePerson)	personName: LENMAN
<b>IdentityDocument (+)</b>	
identityDocumentNumber	12345
identityDocumentType	DRIVERS_LICENSE
<b>LogisticEvent (+plannedReceipt)</b>	
<b>DateTimeRange (+logisticEventPeriod)</b>	
beginDate	2012-07-12
beginTime	10:00
endDate	2012-07-12
endTime	11:00
<b>WarehousingInboundInstructionShipmentItem</b>	
lineItemNumber	1
plannedReceiptQuantity	40
<b>TransactionalTradeItem</b>	
gtin	02222222003333

Attribute	Value
<b>LogisticUnit</b>	
tradeItemQuantity	20
<b>LogisticUnitIdentification (+)</b>	
sscc	311111110000123455
<b>LogisticUnit</b>	
tradeItemQuantity	20
<b>LogisticUnitIdentification (+)</b>	
sscc	311111110000123554

## 5.2. Example 2

### Warehousing Inbound Notification

This is an example of the Warehousing Inbound Notification message. The Manufacturer 2222222 has outsourced a distribution centre to LSP 3333333.

The LSP informs the Manufacturer that the unloading of the shipment from Supplier 1111111 has been completed.

### Party Information

GS1 Global Location Number	Party Type
3333333000001	Logistic Services Seller
2222222000004	Logistic Services Buyer
1111111000007	Shipper
3333333000018	Receiver

### Message Example 2

Attribute	Value
<b>WarehousingInboundNotification</b>	
creationDateTime	2012-07-11 12:15
documentStatusCode	ORIGINAL
documentActionCode	ADD
<b>EntityIdentification (+warehousingInboundNotificationIdentification)</b>	
entityIdentification	IBSTA00113
<b>TransactionalParty (+logisticServicesSeller)</b>	
gln	3333333000001
<b>TransactionalParty (+logisticServicesBuyer)</b>	
gln	2222222000004
<b>WarehousingInboundNotificationShipment</b>	
warehousingInboundStatusCode	UNLOADING_FINISHED
<b>TransactionalParty (+receiver)</b>	

Attribute	Value
gln	3333333000018
<b>TransactionalParty (+shipper)</b>	
gln	1111111000007
<b>ShipmentIdentification (+)</b>	
gsin	11111110000834053
<b>DocumentReference (+warehousingInboundInstruction)</b>	
entityIdentification	INSREC00123
<b>PackageTotal (+)</b>	
packageTypeCode	AF
totalPackageQuantity	2
<b>LogisticUnit (+)</b>	
packageTypeCode	AF
LogisticUnitIdentification (+)	
sscc	311111110000123455
<b>LogisticUnit (+)</b>	
packageTypeCode	AF
LogisticUnitIdentification (+)	
sscc	311111110000123554
<b>LogisticEvent (+actualReceipt)</b>	
<b>DateOptionalTime (+logisticEventDateTime)</b>	
date	2012-07-12
time	11:30

## 6. Implementation Considerations

### 6.1. User Guide

The Functional User Guide contains more information about the structure and content of the Warehouse Inbound Instruction and Notification message:  
[http://www.gs1.org/docs/ecom/xml/3/3.2/eCom-Trade\\_messages.html#WarehouseInboundInstructionandNotification](http://www.gs1.org/docs/ecom/xml/3/3.2/eCom-Trade_messages.html#WarehouseInboundInstructionandNotification)

### 6.2. Message Specific Considerations

Not applicable

## 7. Summary of Changes

Any change in the GS1 standards is done based on the Work Request (WR) submitted by the GS1 User Companies or Member Organisations. All Work Requests are documented in the Work Request system available on the GS1 website: <http://wr.gs1.org>. The system is accessible to registered users. New visitors need to register first, to be able to access it. WRs can be searched by the number referenced in tables below, see: Search Work Requests. The number starts with the two last digits of the year when it was submitted, followed by the consecutive number within that year.



**Note:** WRs submitted earlier than February 2012 should be searched in Old Change Requests.

### 7.1. BMS Release 3.1

First publication



## 7.2. BMS Release 3.2

Change	Associated WR
<p>Added Attribute Value Pair at the root, line item and sub line item levels</p> <p><b>class WarehousingInboundInstruction - maintenance view</b></p> <pre> classDiagram     class WarehousingInboundInstruction {         &lt;&lt;root&gt;&gt;         maintenance     }     WarehousingInboundInstruction --&gt; WarehousingInboundInstructionShipmentItem : +inboundQuantityVariance 0..1     WarehousingInboundInstructionShipmentItem -- &gt; WarehousingCommonWarehouseShipmentItem     WarehousingInboundInstructionShipmentItem --&gt; WarehousingCommonWarehouseServiceInstruction : +inlineServiceInstruction 0..*     </pre> <p><b>class WarehousingInboundInstructionShipmentItem - maintenance view</b></p> <pre> classDiagram     class WarehousingCommonWarehouseShipmentItem {         maintenance     }     class WarehousingInboundInstructionShipmentItem {         +plannedReceiptQuantity : Quantity [0..1]         +crossDockIndicator : boolean [0..1]     }     WarehousingCommonWarehouseShipmentItem &lt; -- WarehousingInboundInstructionShipmentItem     WarehousingInboundInstructionShipmentItem --&gt; WarehousingCommonWarehouseServiceInstruction : +inlineServiceInstruction 0..*     </pre> <p><b>class WarehousingInboundNotification - maintenance view</b></p> <pre> classDiagram     class WarehousingInboundNotification {         &lt;&lt;root&gt;&gt;         maintenance     }     WarehousingInboundNotification --&gt; WarehousingInboundNotificationShipmentItem : +inboundQuantityVariance 0..1     WarehousingInboundNotificationShipmentItem -- &gt; WarehousingCommonWarehouseShipmentItem     WarehousingInboundNotificationShipmentItem --&gt; WarehousingCommonWarehouseQuantityVariance : +inboundQuantityVariance 0..1     WarehousingInboundNotificationShipmentItem --&gt; SharedCommonComponentsDocumentReference : +warehousingInboundInstruction 0..1     </pre> <p><b>class WarehousingInboundNotificationShipmentItem - maintenance view</b></p> <pre> classDiagram     class WarehousingCommonWarehouseShipmentItem {         maintenance     }     class WarehousingInboundNotificationShipmentItem {         +warehousingInboundExceptionCode : WarehousingInboundExceptionCode [0..1]         +actualReceiptQuantity : Quantity [0..1]         +actualAcceptedQuantity : Quantity [0..1]         +plannedReceiptQuantity : Quantity [0..1]         +communicatedDespatchQuantity : Quantity [0..1]     }     WarehousingCommonWarehouseShipmentItem &lt; -- WarehousingInboundNotificationShipmentItem     WarehousingInboundNotificationShipmentItem --&gt; WarehousingCommonWarehouseQuantityVariance : +inboundQuantityVariance 0..1     WarehousingInboundNotificationShipmentItem --&gt; SharedCommonComponentsDocumentReference : +warehousingInboundInstruction 0..1     </pre>	14-000110

## 8. Appendices

(Insert Content Here)

## 9. Acknowledgements

The following is a list of individuals (and their companies) who participated in the creation, review and approval of this BMS.

### 9.1.1. Work Group

Function	Name	Company / organisation
Co-Chair	Jaco Voorspuij	DHL
Co-Chair	Fred Kempkes	Unilever
Member	Andrew Jones	General Mills, Inc.
Member	Bonnie Ryan	GS1 Australia
Member	Kurt Herregodts	GS1 Belgium & Luxembourg
Member	Roman Strand	GS1 Germany
Member	Mia Lenman	GS1 Sweden
Member	Shan Welch	GS1 UK
Member	Geert Simmer	GSPRO
Member	Dr. Karlheinz Mevissen	HAVI Logistics
Member	Robin Kidd	Nestle
Member	Mandeep Sodhi	Nestle
Member	Marc Cox	Philips Electronics N.V.
Member	Nitin Vidwans	Walmart Stores, Inc.

### 9.1.2. Development Team Members

Function	Name	Organisation
GSMP Process Lead	Jean-Luc Champion	GS1 GO
Standards Content Lead	Coen Janssen, Ewa Iwicka	GS1 GO
Technical Development Lead	Ewa Iwicka	GS1 GO
Peer Review	Eric Kauz	GS1 GO