



# Transport Capacity Plan

## Business Message Standard (BMS)

*Release 3.2*

*01-Dec-2014, Issue 1*



## Document Summary

| Document Item        | Current Value   |
|----------------------|---|
| Document Title       | Business Message Standard (BMS) - Transport Capacity Plan |
| BMS Release          | 3.2   |
| Document Version     | Issue 1, 01-Dec-2014                                      |
| Work Group Name      | eCom SMG  |
| BMS Template Version | 2.4   |

## Work Request Reference

| Date of WR Submission to GSMP: | WR Submitter(s):  | Refer to Work Request (WR) Number(s): |
|--------------------------------|-------------------|---------------------------------------|
| 08-Jul-2009                    | DHL               | 09-000189                             |
| 07-Feb-2014                    | GS1 Germany       | 14-000021                             |
| 20-Mar-2014                    | GS1 Slovenia      | 14-000044                             |
| 25-Jun-2014                    | GS1 Global Office | 14-000110                             |

## Business Requirements Document (BRAD) Reference

| BRAD Title         | BRAD Issue Date | BRAD Version |
|--------------------|-----------------|--------------|
| Transport Planning | March 2011      | 1.0          |

## Document Change History

| Date of Change | Version           | Changed By      | Reason for Change | Summary of Change      |
|----------------|-------------------|-----------------|-------------------|------------------------|
| 12-Jan-2012    | BMS 3.0 – Issue 1 | Mark Van Eeghem | BMS Release 3.0   | See summary of changes |
| 01-May-2013    | BMS 3.1 – Issue 1 | Coen Janssen    | BMS Release 3.1   | See summary of changes |
| 01-Dec-2014    | BMS 3.2 – Issue 1 | Ewa Iwicka      | BMS Release 3.2   | See summary of changes |

## Disclaimer

WHILST EVERY EFFORT HAS BEEN MADE TO ENSURE THAT THE GUIDELINES TO USE THE GS1 STANDARDS CONTAINED IN THE DOCUMENT ARE CORRECT, GS1 AND ANY OTHER PARTY INVOLVED IN THE CREATION OF THE DOCUMENT HEREBY STATE THAT THE DOCUMENT IS PROVIDED WITHOUT WARRANTY, EITHER EXPRESSED OR IMPLIED, REGARDING ANY MATTER, INCLUDING BUT NOT LIMITED TO THE OF ACCURACY, MERCHANTABILITY OR FITNESS FOR A PARTICULAR PURPOSE, AND HEREBY DISCLAIM ANY AND ALL LIABILITY, DIRECT OR INDIRECT, FOR ANY DAMAGES OR LOSS RELATING TO OR RESULTING FROM THE USE OF THE DOCUMENT. THE DOCUMENT MAY BE MODIFIED, SUBJECT TO DEVELOPMENTS IN TECHNOLOGY, CHANGES TO THE STANDARDS, OR NEW LEGAL REQUIREMENTS. SEVERAL PRODUCTS AND COMPANY NAMES MENTIONED HEREIN MAY BE TRADEMARKS AND/OR REGISTERED TRADEMARKS OF THEIR RESPECTIVE COMPANIES. GS1 IS A REGISTERED TRADEMARK OF GS1 AISBL.

# Table of Contents

|   |           |
|---|-----------|
| <b>1. Business Domain View .....</b>                            | <b>4</b>  |
| 1.1. Introduction.....  | 4         |
| 1.2. References .....   | 4         |
| <b>2. Business Context .....</b>                                | <b>4</b>  |
| <b>3. Business Transaction View .....</b>                       | <b>5</b>  |
| 3.1. Business Transaction – Manage Transport Capacity Plan..... | 5         |
| <b>4. Business Information View .....</b>                       | <b>7</b>  |
| 4.1. Transport Capacity Plan.....                               | 7         |
| 4.2. Transport Capacity Plan Line Item.....                     | 9         |
| 4.3. Code Lists .....   | 11        |
| <b>5. Business Message Examples .....</b>                       | <b>11</b> |
| 5.1. Example .....  | 11        |
| <b>6. Implementation Considerations .....</b>                   | <b>13</b> |
| 6.1. User Guide .....   | 13        |
| 6.2. Message Specific Considerations .....                      | 13        |
| <b>7. Summary of Changes.....</b>                               | <b>13</b> |
| 7.1. BMS Release 3.0 .....                                      | 14        |
| 7.2. BMS Release 3.1 .....                                      | 14        |
| 7.3. BMS Release 3.2 .....                                      | 14        |
| <b>8. Appendices .....</b>                                      | <b>15</b> |
| <b>9. Acknowledgements .....</b>                                | <b>15</b> |
| 9.1.1. Work Group .....   | 15        |
| 9.1.2. Development Team Members .....                           | 15        |

# 1. Business Domain View

## 1.1. Introduction

### Message Definition

The Logistic Services Seller is responsible for developing the Transport Capacity Plan. He does this based on the Transport Capacity Requirements communicated to him by the Logistic Services Buyer.

### Principles

This BMS is a part of the global GS1 standard for transport planning, enabling Logistic Services Buyers to share capacity forecasts for transportation equipment required by trade lane, origin and destination with Logistic Services Sellers. In this way, Logistic Services Sellers can anticipate the demand for transportation capacity, and can measure their ability to support projected volumes. By providing this visibility to Logistic Services Sellers, the seller will have a reduced need to react to equipment requirements at a moment's notice, easing capacity constraints, improving the efficiency of equipment deployment and utilization, and ultimately taking out unnecessary cost in the supply chain.

Given that the Logistic Services Seller will likely have numerous clients, he should evaluate capacity commitments to all buyers before determining whether they can support the capacity needs of each individual buyer. Based on a number of factors, the Logistic Services Seller may determine the need to allocate capacity from one client to another.

When analysing the forecast received from the Logistic Services Buyer, the Logistic Services Seller may combine the cargo (for multiple requirement lines) if they are for the same trade lane (i.e. origin/destination), forecast bucket, and service requirement level (e.g. refrigerated vs. general cargo).

## 1.2. References

| Reference Name                               | Description   |
|--|---|
| BRAD Transport Planning (GS1, 2011)          |   |
| Logistics Interoperability Model (GS1, 2007) |   |
| BMS eCom Domain Common Library Release 3.2   | The documented design of components that are used in multiple messages within the eCom domain.          |
| BMS Shared Common Library Release 3.2        | The documented design of components that are used in multiple messages within the eCom domain and GDSN. |

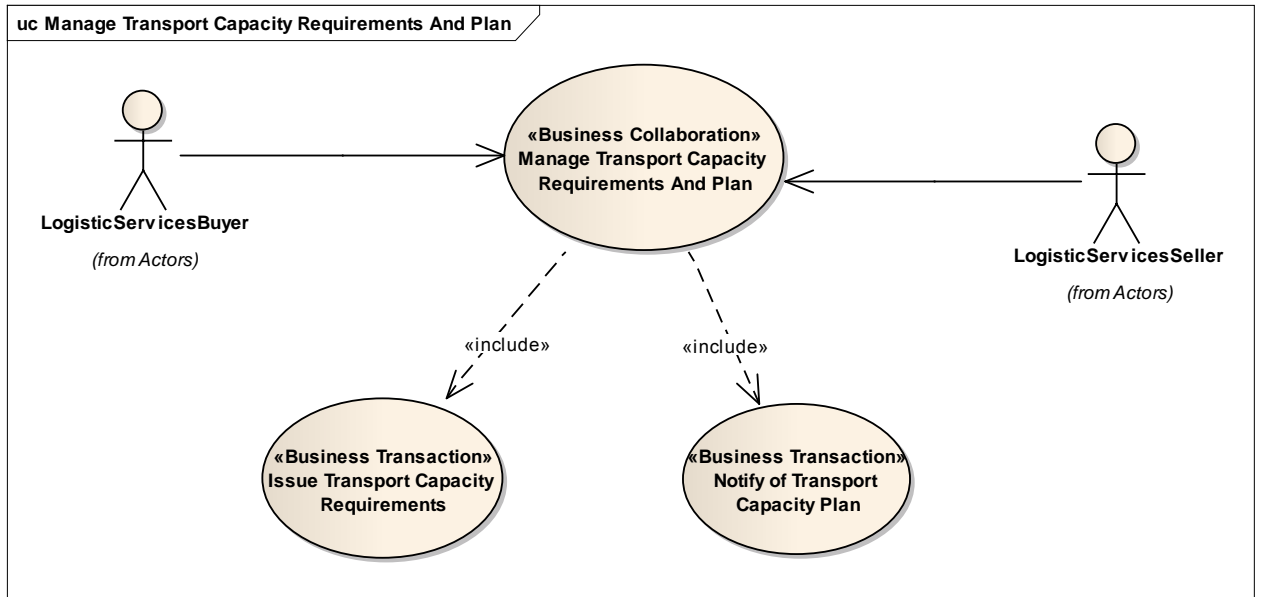
# 2. Business Context

| Context Category     | Value(s)             |
|----------------------|----------------------|
| Industry             | All                  |
| Geopolitical         | All                  |
| Product              | All                  |
| Process              | Transport Management |
| System Capabilities  | GS1 System           |
| Official Constraints | None                 |

### 3. Business Transaction View

#### 3.1. Business Transaction – Manage Transport Capacity Plan

##### Use Case Diagram



##### Use Case Description

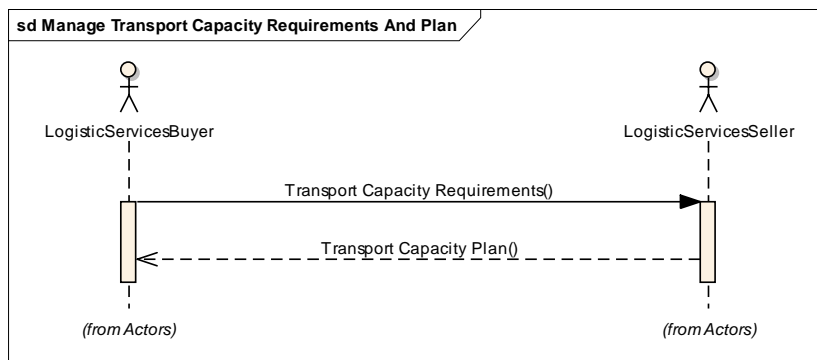
| Use Case ID          | UC-1B   |
|----------------------|---|
| Use Case Name        | Notify of Transport Capacity Plan   |
| Use Case Description | The purpose of this transaction is to enable the Logistic Service Seller to submit a transport capacity plan to the Logistic Service Buyer, identifying how they will support the transport capacity requirements.  |
| Actors (Goal)        | Logistic Service Buyer (LSB)<br>Logistic Service Seller (LSS)   |
| Performance Goals    |   |
| Preconditions        | <p>The LSS has received the transport capacity requirements (capacity forecast) from the LSB.</p> <p>The trading partners have agreed upon:</p> <ul style="list-style-type: none"> <li>Timeframe that the transport capacity plan should be sent after receipt of transport capacity requirements.</li> <li>Time Horizon of the information within the message</li> <li>Forecast Buckets which organize the data based on the time horizon (<i>e.g. data in message that is for 3-4 months prior to shipment – “buckets” are per month; 2 months prior – “buckets” are per week; 1 month prior – “buckets” are by week for weeks 3&amp; 4, and by day for weeks 1 &amp; 2</i>)</li> </ul> <p>Partners have also pre-defined the freight terms, geographic scope of partnership, and distribution strategies to be utilized.</p> |
| Post conditions      | The LSB has received the transport capacity plan.   |

| Use Case ID          | UC-1B  |
|----------------------|--|
| Scenario             | <p><b>Begins when...</b> The LSS has received the transport capacity requirements</p> <p>Continues with...</p> <ul style="list-style-type: none"> <li>■ The LSS develops a transport capacity plan</li> <li>■ The LSS sending the transport capacity plan to the LSB</li> <li>■ The LSB receiving the transport capacity plan</li> </ul> <p><b>Ends when...</b> LSB has received the transport capacity plan</p> |
| Alternative Scenario |  |
| Related Requirements |  |
| Related Rules        |  |

### Activity Diagram(s)

Not applicable

### Sequence Diagram(s)

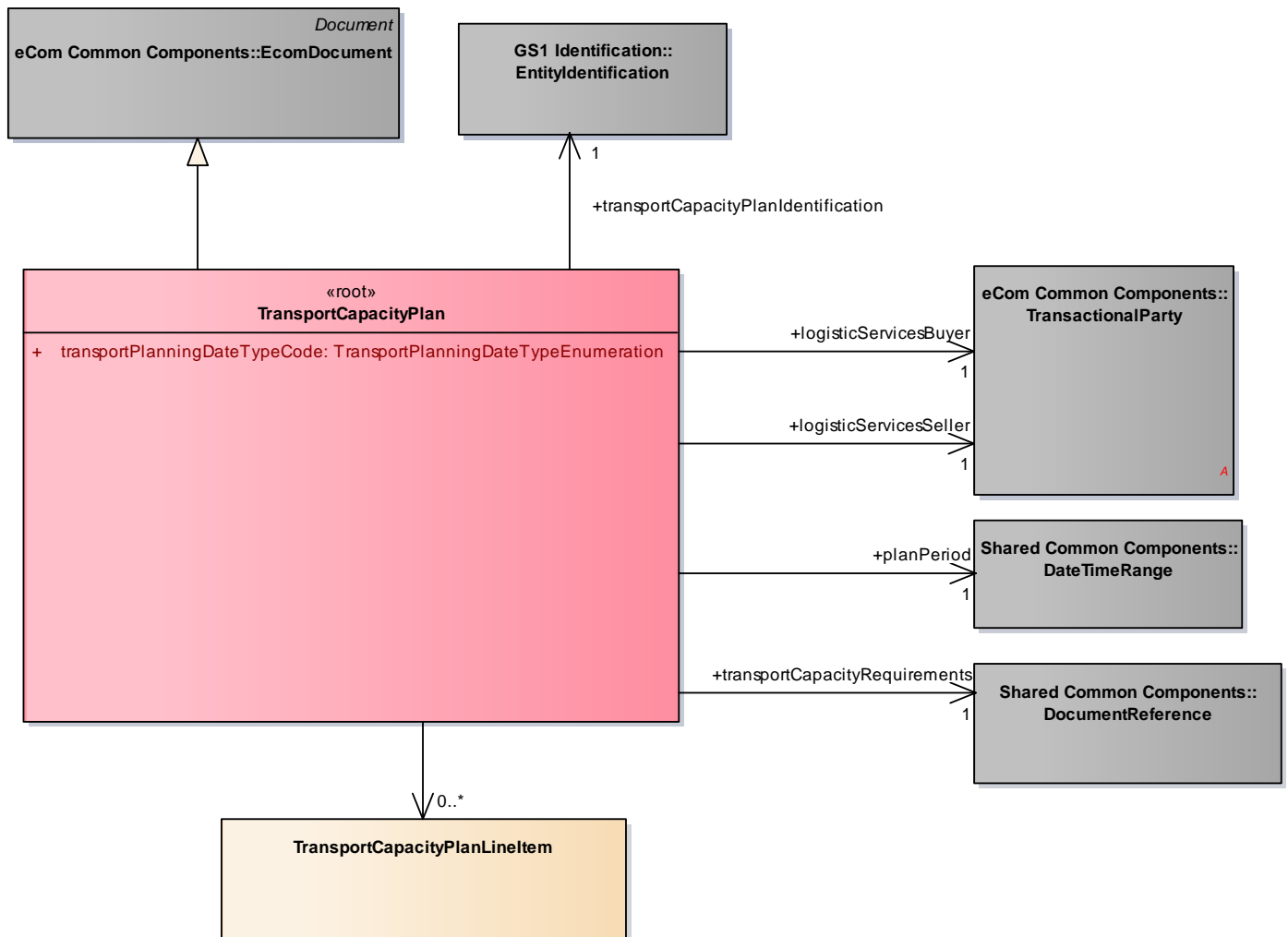


NOTE: Sending of the transport capacity plan is optional. When used it must be in reply to Transport Capacity Requirements.

## 4. Business Information View

### 4.1. Transport Capacity Plan

#### Class Diagram



#### GDD Report

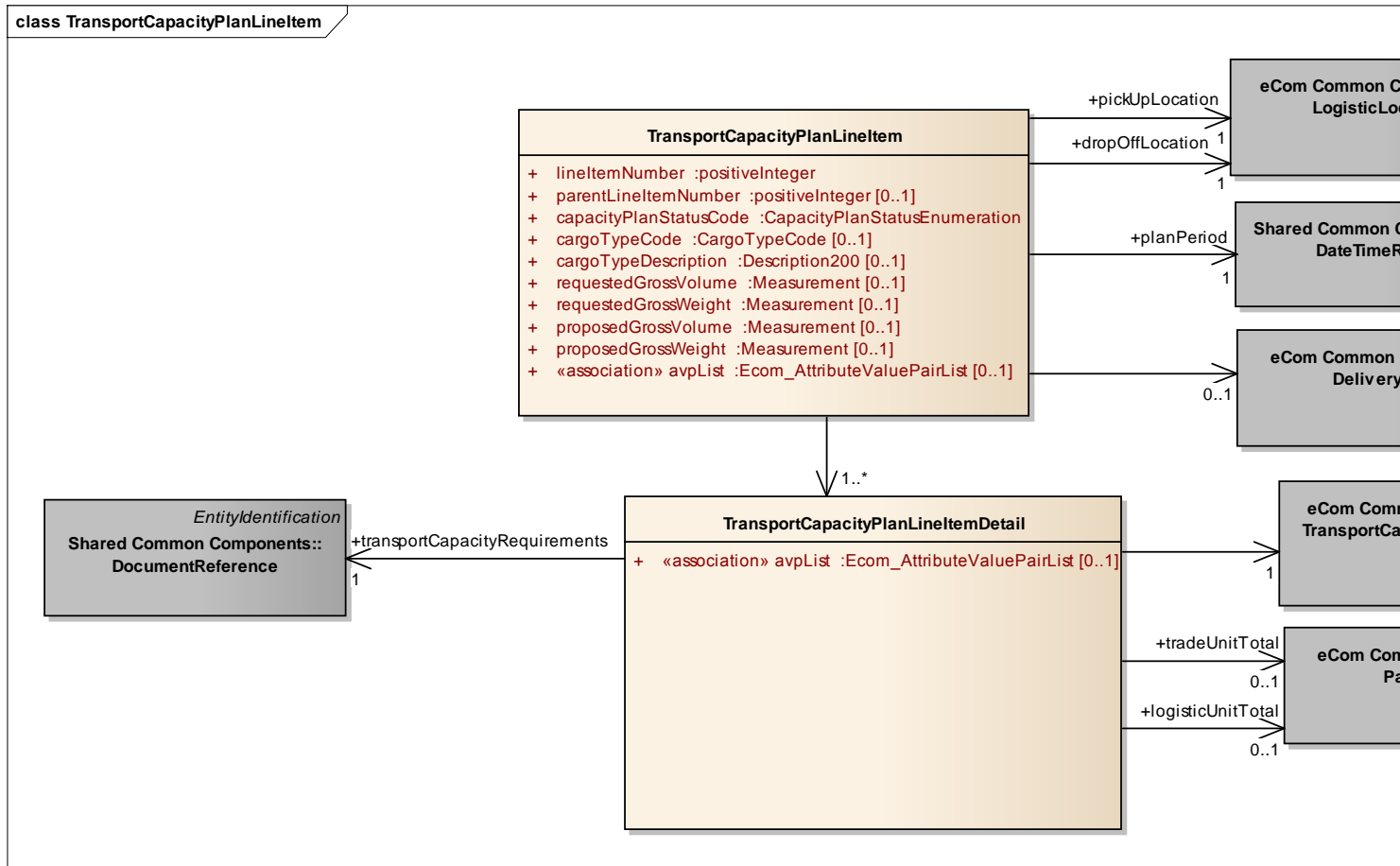
The content of the **TransportCapacityPlan** class, its structure and component definitions can be accessed in the Global Data Dictionary:  
[http://apps.gs1.org/GDD/bms/Version3\\_2/Pages/bieDetails.aspx?semanticURN=urn:gs1:gdd:bie:TransportCapacityPlan](http://apps.gs1.org/GDD/bms/Version3_2/Pages/bieDetails.aspx?semanticURN=urn:gs1:gdd:bie:TransportCapacityPlan)

| Content               | Attribute / Role                    | Datatype / Secondaryclass            | Multiplicity | Definition  |
|-----------------------|-------------------------------------|--------------------------------------|--------------|---|
| TransportCapacityPlan |                                     |                                      |              | Transport Capacity Plan is created by the Logistic Services Seller based on the Transport Capacity Requirements communicated to him by the Logistic Services Buyer. |
| Association           |                                     | TransportCapacityPlanLineItem        | 0..*         | Specifies the transport capacity plan on detail level.  |
| Association           | transportCapacityRequirements       | DocumentReference                    | 1..1         | Reference to the transport capacity requirement message on which the plan has been based.   |
| Association           | transportCapacityPlanIdentification | EntityIdentification                 | 1..1         | Provides the unique identification of the transport capacity plan.  |
| Association           | logisticServicesSeller              | TransactionalParty                   | 1..1         | A party that provides logistics services to another party.  |
| Association           | logisticServicesBuyer               | TransactionalParty                   | 1..1         | A party that purchases logistics services from another party.   |
| Generalization        |                                     | EcomDocument                         |              | Basic information about the content of the message including version number, creation date and time.  |
| Association           | planPeriod                          | DateTimeRange                        | 1..1         | The period to which the plan applies.   |
| Attribute             | transportPlanningDateTypeCode       | TransportPlanningDateTypeEnumeration | 1..1         | Code specifying the type of date used for transport planning, i.e. the delivery date or the pick-up date.   |



## 4.2. Transport Capacity Plan Line Item

### Class Diagram



## GDD Report

The content of the TransportCapacityPlanLineItem class, its structure and component definitions can be accessed in the Global Data Dictionary:  
[http://apps.gs1.org/GDD/bms/Version3\\_2/Pages/bieDetails.aspx?semanticURN=urn:gs1:gdd:bie:TransportCapacityPlanLineItem](http://apps.gs1.org/GDD/bms/Version3_2/Pages/bieDetails.aspx?semanticURN=urn:gs1:gdd:bie:TransportCapacityPlanLineItem)

| Content                       | Attribute / Role       | Datatype / Secondaryclass           | Multiplicity | Definition   |
|-------------------------------|------------------------|-------------------------------------|--------------|--|
| TransportCapacityPlanLineItem |                        |                                     |              | Specifies the planned transport capacity allocation for a given route and cargo type.  |
| Association                   | dropOffLocation        | LogisticLocation                    | 1..1         | The location where the goods need to be delivered.   |
| Association                   | planPeriod             | DateTimeRange                       | 1..1         | The period to which the transport capacity plan line item applies.   |
| Association                   | pickUpLocation         | LogisticLocation                    | 1..1         | The location where the goods need to be collected.   |
| Association                   |                        | DeliveryTerms                       | 0..1         | The applicable legal, customs, financial and insurance terms for the delivery of the goods.  |
| Association                   |                        | TransportCapacityPlanLineItemDetail | 1..*         | Details on the transport capacity requirements on which the plan is based.   |
| Attribute                     | lineItemNumber         | positiveInteger                     | 1..1         | The sequence number for this shipment item.  |
| Attribute                     | parentLineItemNumber   | positiveInteger                     | 0..1         | The number of line item containing information about the parent of the current item. It allows establishing hierarchical link between the two items.                       |
| Attribute                     | capacityPlanStatusCode | CapacityPlanStatusEnumeration       | 1..1         | Code specifying the degree to which the requested capacity can be supported.   |
| Attribute                     | cargoTypeCode          | CargoTypeCode                       | 0..1         | Code specifying the classification of a type of cargo for example hazardous cargo.   |
| Attribute                     | cargoTypeDescription   | Description200                      | 0..1         | Free text specifying the classification of a type of cargo.  |
| Attribute                     | requestedGrossVolume   | Measurement                         | 0..1         | The requested transport capacity expressed as the volume of the goods, calculated by multiplying the maximum length, width, and height of the packaged goods.              |
| Attribute                     | requestedGrossWeight   | Measurement                         | 0..1         | The requested transport capacity expressed as the weight of the goods, including the weight of transport packaging, and potentially the weight of any transport equipment. |
| Attribute                     | proposedGrossVolume    | Measurement                         | 0..1         | The proposed transport capacity expressed as the volume of the goods, calculated by multiplying the maximum length, width, and height of the packaged goods.               |
| Attribute                     | proposedGrossWeight    | Measurement                         | 0..1         | The proposed transport capacity expressed as the weight of the goods, including the weight of transport packaging, and potentially the weight of any transport equipment.  |

| Content                             | Attribute / Role              | Datatype / Secondaryclass     | Multiplicity | Definition  |
|-------------------------------------|-------------------------------|-------------------------------|--------------|---|
| Attribute                           | avpList                       | Ecom_AttributeValue PairList  | 0..1         | Temporary attributes introduced between minor versions.                                 |
| TransportCapacityPlanLineItemDetail |                               |                               |              | Specifies the requested transport capacity allocation for a given route and cargo type. |
| Association                         | logisticUnitTotal             | PackageTotal                  | 0..1         | The total number of logistic units to be transported.                                   |
| Association                         |                               | TransportCargoCharacteristics | 1..1         | Aggregate information on the goods to be transported.                                   |
| Association                         | transportCapacityRequirements | DocumentReference             | 1..1         | Reference to the related transport capacity requirements line item.                     |
| Association                         | tradeUnitTotal                | PackageTotal                  | 0..1         | The total number of trade units (e.g. cases) to be transported.                         |
| Attribute                           | avpList                       | Ecom_AttributeValue PairList  | 0..1         | Temporary attributes introduced between minor versions.                                 |



**Note:** Reference Shared Common Library Business Message (BMS) Release 3.2.0 and eCom Domain Common Library Business Message (BMS) Release 3.2.0 for all common information.

## 4.3. Code Lists

| Class                         | Codelist                             | GDD Link  |
|-------------------------------|--------------------------------------|---|
| TransportCapacityPlanLineItem | CapacityPlanStatusEnumeration        | <a href="http://apps.gs1.org/GDD/Pages/clDetails.aspx?semanticURN=urn:gs1:gdd:cl:CapacityPlanStatusEnumeration">http://apps.gs1.org/GDD/Pages/clDetails.aspx?semanticURN=urn:gs1:gdd:cl:CapacityPlanStatusEnumeration</a>               |
| TransportCapacityPlan         | TransportPlanningDateTypeEnumeration | <a href="http://apps.gs1.org/GDD/Pages/clDetails.aspx?semanticURN=urn:gs1:gdd:cl:TransportPlanningDateTypeEnumeration">http://apps.gs1.org/GDD/Pages/clDetails.aspx?semanticURN=urn:gs1:gdd:cl:TransportPlanningDateTypeEnumeration</a> |
| TransportCapacityPlanLineItem | CargoTypeCode                        | <a href="http://apps.gs1.org/GDD/Pages/clDetails.aspx?semanticURN=urn:gs1:gdd:cl:CargoTypeCode">http://apps.gs1.org/GDD/Pages/clDetails.aspx?semanticURN=urn:gs1:gdd:cl:CargoTypeCode</a>   |



**Note:** Refer to the Global Data Dictionary (GDD) for the code values.

# 5. Business Message Examples

## 5.1. Example

A Logistic Service Buyer, ABC\_Company identified by GLN 1234567890128, is providing a forecast of capacity requirements for 6 months to Logistics\_International identified by GLN 9876543212344.

### Party Information

| GS1 Global Location Number | Party Type              |
|----------------------------|-------------------------|
| 1234567890128              | Logistic Service Buyer  |
| 9876543212344              | Logistic Service Seller |

### Message Example

| Attribute  | Value               |
|--|---------------------|
| <b>TransportCapacityPlan</b>                                       |                     |
| creationDateTime   | 2009-12-14T12:00:00 |
| documentStatusCode   | ORIGINAL            |
| documentActionCode   | ADD                 |
| transportPlanningDateTypeCode                                      | DELIVERY_DATE       |
| <b>EntityIdentification (+transportCapacityPlanIdentification)</b> |                     |
| entityIdentification   | PLAN1234            |
| <b>TransactionalParty (+logisticServicesBuyer)</b>                 |                     |
| gln  | 1234567890128       |
| <b>TransactionalParty (+logisticServicesSeller)</b>                |                     |
| gln  | 9876543212344       |
| <b>DateTimeRange (+planPeriod)</b>                                 |                     |
| beginDate  | 2010-01-01          |
| endDate  | 2010-06-30          |
| <b>DocumentReference (+transportCapacityRequirements)</b>          |                     |
| entityIdentification   | RQMT1234            |
| <b>TransportCapacityPlanLineItem</b>                               |                     |
| lineItemNumber   | 1                   |
| capacityPlanStatusCode   | ACCEPTED_IN_FULL    |
| cargoTypeCode  | 12                  |
| requestedGrossWeight   | 50 KGM              |
| requestedGrossVolume   | 9.22 CBM            |
| proposedGrossWeight  | 50 KGM              |
| proposedGrossVolume  | 9.22 CBM            |
| <b>LogisticLocation (+pickUpLocation)</b>                          |                     |
| unLocationCode   | US LAX              |
| <b>LogisticLocation (+dropOffLocation)</b>                         |                     |
| unLocationCode   | US EWR              |
| <b>DateTimeRange (+planPeriod)</b>                                 |                     |
| beginDate  | 2010-01-01          |
| endDate  | 2010-01-07          |
| <b>DeliveryTerms</b>   |                     |
| incotermsCode  | CFR                 |

| Attribute   | Value     |
|---|-----------|
| <b>LogisticLocation</b>                                       |           |
| unLocationCode  | US RDG    |
| <b>TransportCapacityPlanLineItemDetail</b>                    |           |
| <b>TransportCargoCharacteristics</b>                          |           |
| cargoTypeCode   | 12        |
| cargoTypeDescription  | Furniture |
| totalGrossWeight  | 50 KGM    |
| totalGrossVolume  | 9.22 CBM  |
| totalItemQuantity   | 75        |
| totalPackageQuantity  | 5         |
| <b>LogisticUnitTotal (+tradeUnitTotal)</b>                    |           |
| packageTypeCode   | CS        |
| totalPackageQuantity  | 25        |
| <b>LogisticUnitTotal (+logisticUnitTotal)</b>                 |           |
| packageTypeCode   | 200       |
| totalPackageQuantity  | 25        |
| <b>DocumentReference<br/>(+transportCapacityRequirements)</b> |           |
| entityIdentification  | RQMT1234  |
| lineItemNumber  | 1         |

## 6. Implementation Considerations

### 6.1. User Guide

The Functional User Guide contains more information about the structure and content of the Transport Capacity Plan message: [http://www.gs1.org/docs/ecom/xml/3/3.2/eCom-Trade\\_messages.html#TransportCapacityPlan](http://www.gs1.org/docs/ecom/xml/3/3.2/eCom-Trade_messages.html#TransportCapacityPlan)

### 6.2. Message Specific Considerations

Not applicable

## 7. Summary of Changes

Any change in the GS1 standards is done based on the Work Request (WR) submitted by the GS1 User Companies or Member Organisations. All Work Requests are documented in the Work Request system available on the GS1 website: <http://wr.gs1.org>. The system is accessible to registered users. New visitors need to register first, to be able to access it. WRs can be searched by the number referenced in tables below, see: Search Work Requests. The number starts with the two last digits of the year when it was submitted, followed by the consecutive number within that year.

**Note:** WRs submitted earlier than February 2012 should be searched in Old Change Requests.

## 7.1. BMS Release 3.0

| Change          | BSD Version | Associated CR Number |
|-----------------|-------------|----------------------|
| Initial Version | 1.0         | N/A                  |

## 7.2. BMS Release 3.1

No work requests. Indirect changes due to upgrade to new Shared and eCom Common libraries.

## 7.3. BMS Release 3.2

| Change  | Associated WR                       |
|---|-------------------------------------|
| <div>Added Attribute Value Pair at the root, line item and sub line item levels</div> <div><div>class TransportCapacityPlan - maintenance view</div><div><div>«root»<br/>TransportCapacityPlan</div><div>+ transportPlanningDateTypeCode :TransportPlanningDateTypeEnumeration</div><div><div>maintenance</div><div>Change: (Verified) 3.2 changed generalisation from Document to eComDocument class to include AVP (WR 14-110)</div></div></div></div>  | 14-000110                           |
| <div><div>■ Added a reference to parent line number to all Lineltem classes, to support hierarchical items (WRs 14-021 &amp; 14-044)</div><div>■ Added Attribute Value Pair at the root, line item and sub line item levels (WR 14-110)</div></div> <div><div>class TransportCapacityPlanLineltem - maintenance view</div><div><div>TransportCapacityPlanLineltem</div><div>+ lineltemNumber :positiveInteger<br/>+ parentLineltemNumber :positiveInteger [0..1]<br/>+ capacityPlanStatusCode :CapacityPlanStatusEnumeration<br/>+ cargoTypeCode :CargoTypeCode [0..1]<br/>+ cargoTypeDescription :Description200 [0..1]<br/>+ requestedGrossVolume :Measurement [0..1]<br/>+ requestedGrossWeight :Measurement [0..1]<br/>+ proposedGrossVolume :Measurement [0..1]<br/>+ proposedGrossWeight :Measurement [0..1]<br/>+ «association» avpList :Ecom_AttributeValuePairList [0..1]</div><div><div>maintenance</div><div>Change: (Verified) 3.2 added +avpList (WR 14-110)<br/>Change: (Verified) 3.2 added +parentLineltemNumber (WR 14-021 &amp; 14-044)</div></div></div></div> | 14-000021<br>14-000044<br>14-000110 |

| Change   | Associated WR |
|--|---------------|
| <p>Added Attribute Value Pair at the root, line item and sub line item levels</p> <div> <b>class TransportCapacityPlanLineItemDetail - maintenance view</b> <div> <div>TransportCapacityPlanLineItemDetail</div> <div>+ «association» avpList :Ecom_AttributeValuePairList [0..1]</div> <div> <i>maintenance</i><br/> Change: (Verified) 3.2 added +avpList (WR 14-110) </div> </div> </div> | 14-000110     |

## 8. Appendices

Not applicable

## 9. Acknowledgements

The following is a list of individuals (and their companies) who participated in the creation, review and approval of this BMS.

### 9.1.1. Work Group

| Function          | Name              | Company / organisation            |
|-------------------|-------------------|-----------------------------------|
| Work Group Chair  | Fred Kempkes      | Unilever                          |
| Work Group Chair  | Jaco Voorspuij    | DHL                               |
| Work Group Member | Mia Lenman        | GS1 Sweden                        |
| Work Group Member | Richard Chresta   | GS1 Switzerland & UNCEFACT TGB3   |
| Work Group Member | Jeff Melcher      | Army & Air Force Exchange Service |
| Work Group Member | Yuliya Shevchenko | GS1 Global Office                 |
| Work Group Member | Mats Rosen        | DSV Sweden                        |
| Work Group Member | Helena Lunden     | ICA Sweden                        |
| Work Group Member | Gerald Borgolte   | Atos Origin                       |
| Work Group Member | Audun Vennesland  | SINTEF & e-Freight                |
| Work Group Member | Mary Vayou        | BMT Group Ltd & e-Freight         |

### 9.1.2. Development Team Members

| Function          | Name              | Organisation      |
|-------------------|-------------------|-------------------|
| GSMP Process Lead | Jean-Luc Champion | GS1 Global Office |

| Function                   | Name                     | Organisation      |
|----------------------------|--------------------------|-------------------|
| Standards Content Lead     | Coen Janssen, Ewa Iwicka | GS1 Global Office |
| Technical Development Lead | Ewa Iwicka               | GS1 Global Office |
| Peer Review                | Eric Kauz                | GS1 Global Office |