



Business Message Standard (BMS) Transport Instruction and Response

BMS Release: 3.0.0, SMG: eCom

Issue 1.1.0, 8-Nov-2011



Document Summary

| Document Item | Current Value |
|----------------------|------------------------------------|
| Document Title | Business Message Standard (BMS) |
| BMS Name | Transport Instruction and Response |
| BMS Release | 3.0.0 |
| SMG Name | eCom |
| Document Number | Issue 1.1.0 |
| Date Last Modified | 8-Nov-2011 |
| Status | Approved |
| Owner | eCom SMG |
| BMS Template Version | 2.0 |

Change Request Reference

| Date of CR Submission to GSMP: | CR Submitter(s): | Refer to Change Request (CR) Number(s): |
|--------------------------------|------------------|---|
| | | |

Business Requirements Document (BRAD) Reference

| BRAD Title: | BRAD Date: | BRAD Version |
|----------------------|------------|--------------|
| Transport Management | | 1.0 |

Document Change History

| Date of Change | Version | Changed By | Reason for Change | Summary of Change | Model Build # |
|----------------|---------|-----------------|------------------------|--------------------------------|---------------|
| 13-May-2011 | 1.0 | Coen Janssen | Version 1.0 (draft) | | |
| 17-Jun-2011 | 1.1 | Mark Van Eeghem | Pilot Issue resolution | See section Summary of Changes | N/A |
| 8-Nov-2011 | 1.1 | Coen Janssen | BMS publication | See section Summary of Changes | N/A |

Disclaimer

WHILST EVERY EFFORT HAS BEEN MADE TO ENSURE THAT THE GUIDELINES TO USE THE GS1 STANDARDS CONTAINED IN THE DOCUMENT ARE CORRECT, GS1 AND ANY OTHER PARTY INVOLVED IN THE CREATION OF THE DOCUMENT HEREBY STATE THAT THE DOCUMENT IS PROVIDED WITHOUT WARRANTY, EITHER EXPRESSED OR IMPLIED, REGARDING ANY MATTER, INCLUDING BUT NOT LIMITED TO THE OF ACCURACY, MERCHANTABILITY OR FITNESS FOR A PARTICULAR PURPOSE, AND HEREBY DISCLAIM ANY AND ALL LIABILITY, DIRECT OR INDIRECT, FOR ANY DAMAGES OR LOSS RELATING TO OR RESULTING FROM THE USE OF THE DOCUMENT. THE DOCUMENT MAY BE MODIFIED, SUBJECT TO DEVELOPMENTS IN TECHNOLOGY, CHANGES TO THE STANDARDS, OR NEW LEGAL REQUIREMENTS. SEVERAL PRODUCTS AND COMPANY NAMES MENTIONED HEREIN MAY BE TRADEMARKS AND/OR REGISTERED TRADEMARKS OF THEIR RESPECTIVE COMPANIES. GS1 IS A REGISTERED TRADEMARK OF GS1 AISBL.

Table of Contents

| | |
|--|-----------|
| 1. Business Domain View | 5 |
| 1.1. Problem Statement / Business Need | 5 |
| 1.2. Objective..... | 5 |
| 1.3. Audience..... | 5 |
| 1.4. References | 5 |
| 1.5. Acknowledgements | 6 |
| 1.5.1. BRG Work Group..... | 6 |
| 1.5.2. Design Team Members..... | 6 |
| 2. Business Context | 7 |
| 3. Additional Technical Requirements Analysis..... | 7 |
| 3.1. Technical Requirements (optional) | 7 |
| 4. Business Transaction View | 8 |
| 4.1. Use Case Diagram – Issue Transport Instruction..... | 8 |
| 4.2. Use Case Description – Issue Transport Instruction..... | 8 |
| 4.3. Activity Diagram(s) – Issue Transport Instruction | 9 |
| 4.4. Use Case Diagram – Confirm Transport Instruction | 9 |
| 4.5. Use Case Description – Confirm Transport Instruction..... | 9 |
| 4.6. Activity Diagram(s) – Confirm Transport Instruction | 10 |
| 5. Information Model (Including GDD Report) | 11 |
| 5.1. Transport Instruction (message) | 11 |
| 5.1.1. GDD Report - Transport Instruction..... | 11 |
| 5.1.2. Class Diagram - Transport Instruction | 12 |
| 5.2. Transport Instruction Response (message) | 13 |
| 5.2.1. GDD Report - Transport Instruction Response | 13 |
| 5.2.2. Class Diagram - Transport Instruction Response..... | 14 |
| 5.3. Transport Instruction Common (package)..... | 15 |
| 5.3.1. GDD Report – Transport Instruction Consignment..... | 15 |
| 5.3.2. Class Diagram – Transport Instruction Consignment..... | 18 |
| 5.3.3. GDD Report – Transport Instruction Consignment Item | 19 |
| 5.3.4. Class Diagram – Transport Instruction Consignment Item | 20 |
| 5.3.5. GDD Report – Transport Instruction Shipment | 21 |
| 5.3.6. Class Diagram – Transport Instruction Shipment..... | 24 |
| 5.3.7. GDD Report – Transport Instruction Shipment Item..... | 25 |
| 5.3.8. Class Diagram – Transport Instruction Shipment Item | 26 |
| 5.3.9. GDD Report – Transport Instruction Terms | 27 |
| 5.3.10. Class Diagram – Transport Instruction Terms..... | 28 |
| 5.3.11. GDD Report – Transport Instruction Transport Equipment..... | 28 |
| 5.3.12. Class Diagram – Transport Instruction Transport Equipment..... | 29 |
| 5.3.13. GDD Report – Transport Instruction Transport Movement..... | 30 |

| | | |
|------------|--|-----------|
| 5.3.14. | Class Diagram – Transport Instruction Transport Movement | 32 |
| 5.4. | Enumerations (message specific)..... | 33 |
| 5.4.1. | TransportInstructionFunctionEnumeration..... | 33 |
| 5.4.2. | TransportInstructionResponseTypeEnumeration..... | 33 |
| 5.4.3. | TransportInstructionStatusEnumeration | 33 |
| 5.5. | Codelists..... | 33 |
| 6. | Business Document Example..... | 34 |
| 6.1. | Transport Instruction – Domestic, 1 consignment, 1 truck, with logistic units | 34 |
| 6.2. | Transport Instruction Response– Domestic, 1 consignment, 1 truck, with logistic units..... | 36 |
| 6.3. | Transport Instruction – Domestic, 1 shipment, 1 truck, with logistic units..... | 38 |
| 7. | Implementation Considerations | 40 |
| 8. | Testing | 40 |
| 8.1. | Pass / Fail Criteria..... | 40 |
| 8.2. | Test Data | 40 |
| 9. | Appendices | 40 |
| 10. | Summary of Changes..... | 40 |
| 11. | Adherence to Architectural Principles | 43 |

1. Business Domain View

1.1. Problem Statement / Business Need

The main objectives of the Transport Instruction are to communicate and share the arrangements (through the agreed conditions) of the movement of the goods (including collection and delivery) between all parties involved and providing the information necessary to perform the handling of the goods.

The Transport Instruction will be sent by the Logistic Services Buyer (supplier, retailer, 3rd party warehouse or freight forwarder) to a Logistic Services Seller (freight forwarder or carrier) upon order creation.

The Transport Instruction can include a request for either executing a consignment or executing a shipment. The trading partners need the ability to differentiate between less detailed transport instructions (shipments) and more detailed instructions (consignments).

A Transport Instruction Response may be sent from Logistic Services Seller to Logistic Services Buyer, but exchanging this message is optional. In many cases there exist standing agreements that the Logistic Services Seller will accept all Transport Instructions from the Logistic Services Buyer 'as sent'. In that case sending the Transport Instruction Response adds no value to the process and partners can agree NOT to exchange this message-type.

1.2. Objective

To supply the detail design of the (specific) business transaction needed to meet the requirements of the referenced BRAD(s).

1.3. Audience

Not Applicable

1.4. References

| Reference Name | Description |
|--|-------------|
| BRAD Transport Management (GS1, 2009) | |
| Logistics Interoperability Model (GS1, 2007) | |
| | |
| | |

1.5. Acknowledgements

The following is a list of individuals (and their companies) who participated in the creation, review and approval of this BMS.

1.5.1. BRG Work Group

| Function | Name | Company / organisation |
|-----------------------|-------------------|-----------------------------------|
| BRG Work Group Chair | Fred Kempkes | Unilever |
| BRG Work Group Chair | Jaco Voorspuij | DHL |
| BRG Work Group Member | Mia Lenman | GS1 Sweden |
| BRG Work Group Member | Richard Chresta | GS1 Switzerland & UNCEFACT TGB3 |
| BRG Work Group Member | Jeff Melcher | Army & Air Force Exchange Service |
| BRG Work Group Member | Yuliya Shevchenko | GS1 Global Office |
| BRG Work Group Member | Roman Strand | GS1 Germany |
| BRG Work Group Member | Henk van Maaren | CETIMA & UNCEFACT TBG3 |
| BRG Work Group Member | Pere Rosell | GS1 Spain |
| BRG Work Group Member | Mats Rosen | DSV Sweden |
| BRG Work Group Member | Helena Lunden | ICA Sweden |
| BRG Work Group Member | Gerald Borgolte | Atos Origin |
| BRG Work Group Member | Audun Vennesland | SINTEF & eFreight |
| BRG Work Group Member | Mary Vayou | BMT Group Ltd & eFreight |

1.5.2. Design Team Members

| Function | Name | Organisation |
|---------------------------|-------------------------------|-------------------|
| Modeler | Coen Janssen, Mark van Eeghem | GS1 |
| XML Technical Designer | Dipan Anarkat | GS1 |
| EANCOM Technical Designer | Not applicable | |
| Peer Reviewer | Eric Kauz | GS1 |
| Process Manager | Jean-Luc Champion | GS1 Global Office |

2. Business Context

| Context Category | Value(s) |
|----------------------|--------------------------------|
| Industry | All |
| Geopolitical | All |
| Product | All |
| Process | Deliver / Transport Management |
| System Capabilities | GS1 System |
| Official Constraints | None |

3. Additional Technical Requirements Analysis

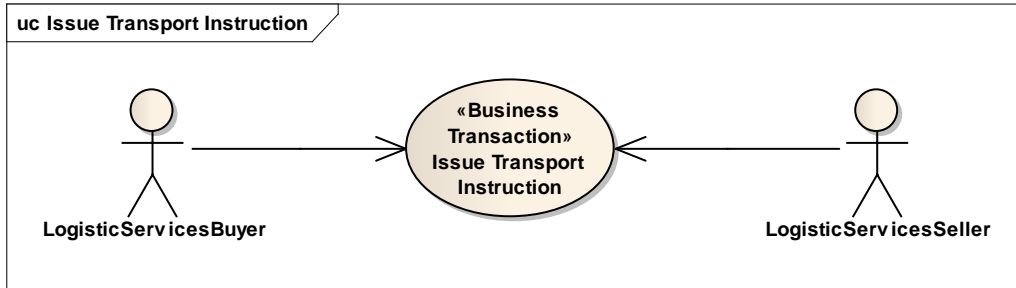
Not applicable

3.1. Technical Requirements (optional)

| Number | Statement | Rationale |
|--------|----------------|-----------|
| | Not applicable | |

4. Business Transaction View

4.1. Use Case Diagram – Issue Transport Instruction



4.2. Use Case Description – Issue Transport Instruction

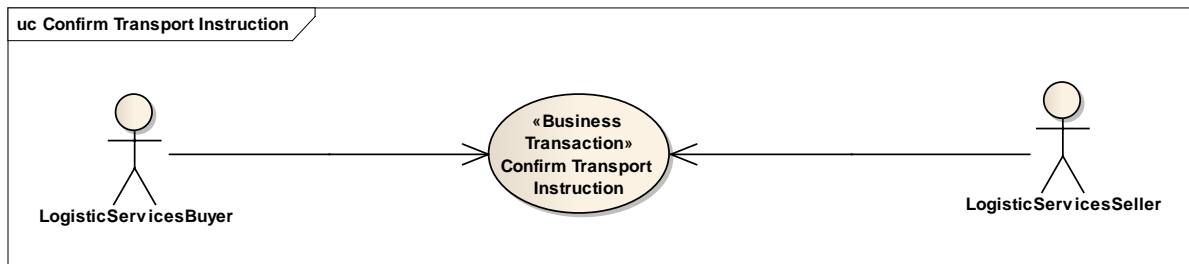
| Use Case ID | UC-1 | | | | | | | | | | | | | |
|-----------------------------|---|------------------------------------|--------|-------|---------------|---|-----|--------------------------------|---|-----|------------------------------------|---|--|--|
| Use Case Name | Issue Transport Instruction | | | | | | | | | | | | | |
| Use Case Description | The main objectives are to communicate/ share the arrangement of the transport of goods between all parties involved in the movement of the consignment(s) and or shipment(s) as well as providing the information necessary to perform that transport and delivery of the goods. | | | | | | | | | | | | | |
| Actors (Goal) | Logistic Services Buyer (LSB) Logistic Services Seller (LSS) | | | | | | | | | | | | | |
| Performance Goals | Not applicable | | | | | | | | | | | | | |
| Preconditions | Interoperation agreement is in place. | | | | | | | | | | | | | |
| Post conditions | Transport instructions have been received by the LSS | | | | | | | | | | | | | |
| Scenario | <p>Begins when the Logistic Services Buyer determines transport services are needed.</p> <p>Continues with...</p> <table border="1"> <thead> <tr> <th>Step #</th><th>Actor</th><th>Activity Step</th></tr> </thead> <tbody> <tr> <td>1</td><td>LSB</td><td>Issues a transport instruction</td></tr> <tr> <td>2</td><td>LSS</td><td>Receives the transport instruction</td></tr> </tbody> </table> <p>Ends when the LSS has processed the transport instruction in the transport management system.</p> | | Step # | Actor | Activity Step | 1 | LSB | Issues a transport instruction | 2 | LSS | Receives the transport instruction | | | |
| Step # | Actor | Activity Step | | | | | | | | | | | | |
| 1 | LSB | Issues a transport instruction | | | | | | | | | | | | |
| 2 | LSS | Receives the transport instruction | | | | | | | | | | | | |
| Alternative Scenario | <table border="1"> <thead> <tr> <th>Step #</th><th>Actor</th><th>Activity Step</th></tr> </thead> <tbody> <tr> <td>1</td><td></td><td></td></tr> <tr> <td>2</td><td></td><td></td></tr> <tr> <td>3</td><td></td><td></td></tr> </tbody> </table> | | Step # | Actor | Activity Step | 1 | | | 2 | | | 3 | | |
| Step # | Actor | Activity Step | | | | | | | | | | | | |
| 1 | | | | | | | | | | | | | | |
| 2 | | | | | | | | | | | | | | |
| 3 | | | | | | | | | | | | | | |
| Related Requirements | Not applicable | | | | | | | | | | | | | |

| | |
|----------------------|----------------|
| Related Rules | Not applicable |
|----------------------|----------------|

4.3. Activity Diagram(s) – Issue Transport Instruction

Not applicable

4.4. Use Case Diagram – Confirm Transport Instruction



4.5. Use Case Description – Confirm Transport Instruction

| Use Case ID | UC-2 | | | | | | | | | | | | |
|----------------------|---|---|-------|---------------|---|-----|---|---|-----|---|---|--|--|
| Use Case Name | Confirm Transport Instruction | | | | | | | | | | | | |
| Use Case Description | The main objectives are to give the confirmation or modification of the arrangement of the transport of goods between all parties. | | | | | | | | | | | | |
| Actors (Goal) | Logistic Services Buyer Logistic Services Seller | | | | | | | | | | | | |
| Performance Goals | Not applicable | | | | | | | | | | | | |
| Preconditions | <ul style="list-style-type: none">■ The Logistic Services Seller did receive a transport instruction.■ In the interoperation agreement it was agreed between the Logistic Services Buyer and Logistic Service Seller that | | | | | | | | | | | | |
| Post conditions | Transport instruction response has been received by the LSB. | | | | | | | | | | | | |
| Scenario | <p>Begins when the Logistic Service Seller has determined the appropriate response to the transport instruction.</p> <p>Continues with...</p> <table><tr><th>Step #</th><th>Actor</th><th>Activity Step</th></tr><tr><td>1</td><td>LSS</td><td>Issues a transport instruction confirmation</td></tr><tr><td>2</td><td>LSB</td><td>Receives the transport instruction confirmation</td></tr><tr><td>3</td><td></td><td></td></tr></table> <p>Ends when the LSB has processed the transport instruction confirmation in the transport management system.</p> | Step # | Actor | Activity Step | 1 | LSS | Issues a transport instruction confirmation | 2 | LSB | Receives the transport instruction confirmation | 3 | | |
| Step # | Actor | Activity Step | | | | | | | | | | | |
| 1 | LSS | Issues a transport instruction confirmation | | | | | | | | | | | |
| 2 | LSB | Receives the transport instruction confirmation | | | | | | | | | | | |
| 3 | | | | | | | | | | | | | |

| | | | |
|-----------------------------|----------------|--------------|----------------------|
| Alternative Scenario | | | |
| | Step # | Actor | Activity Step |
| | 1 | | |
| | 2 | | |
| | 3 | | |
| Related Requirements | Not applicable | | |
| Related Rules | Not applicable | | |

4.6. Activity Diagram(s) – Confirm Transport Instruction

Not applicable

5. Information Model (Including GDD Report)

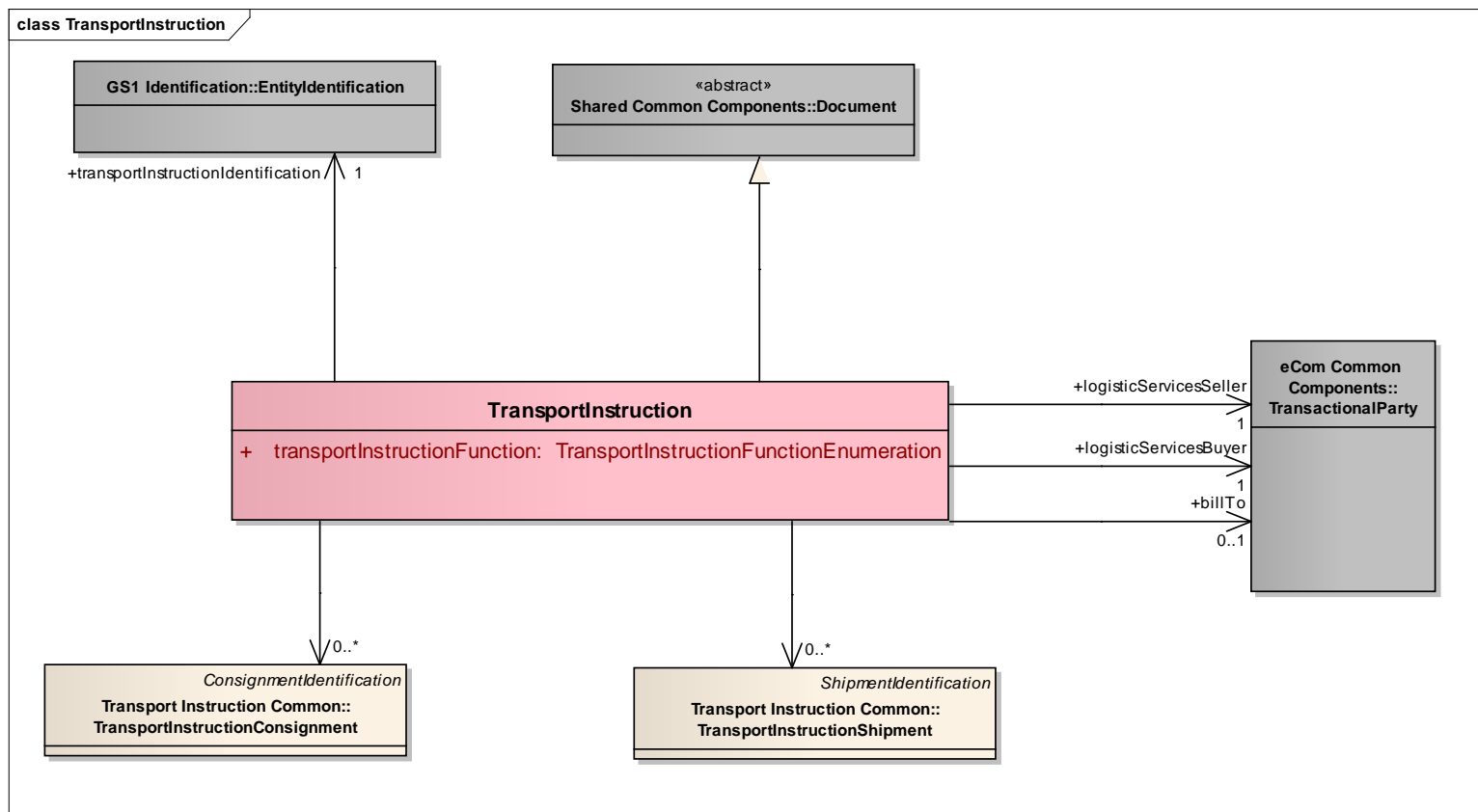
5.1. Transport Instruction (message)

5.1.1. GDD Report - Transport Instruction

| content | multiplicity | attribute / role | datatype / secondary class | definition | requirements |
|-----------------------------|--------------|------------------------------------|---------------------------------|--|--|
| TransportInstruction | | | | The main objectives of the Transport Instruction are to communicate and share the arrangements (through the agreed conditions) of the movement of the goods (including collection and delivery) between all parties involved and providing the information necessary to perform the handling of the goods. | |
| Generalization | | | Document | Provides the generic document details for the transport instruction. | BRAD TransportInstruction-2, 4 |
| Association | [1..1] | logisticServicesSeller | TransactionalParty | A party that provides logistics services to another party. | BRAD TransportInstruction-6 |
| Association | [0..1] | billTo | TransactionalParty | Identifies the party who receives the invoice. Synonym: Invoicee. | BRAD TransportInstruction-7 |
| Association | [0..*] | | TransportInstructionShipment | Provides the information on a shipment contained in this transport instruction. | BRAD TransportInstruction-8, 9, 10, 11, 15 |
| Association | [1..1] | logisticServicesBuyer | TransactionalParty | A party that purchases logistics services from another party. | BRAD TransportInstruction-5 |
| Association | [0..*] | | TransportInstructionConsignment | Provides the information on a consignment contained in this transport instruction. | BRAD TransportInstruction-8, 12, 13 |
| Association | [1..1] | transportInstructionIdentification | EntityIdentification | The identification of the transport instruction document. | BRAD TransportInstruction-1 |

| content | multipl icity | attribute / role | datatype / secondary class | definition | requirements |
|-----------|------------------|----------------------------------|---|---|------------------------------------|
| Attribute | [1..1] | transportInstructionFu nction | TransportInstructionFu nctionEnumeration | The transport instruction function identifies whether the transport instruction is consignment-based or shipment-based. | BRAD TransportInstructio n-3 |

5.1.2. Class Diagram - Transport Instruction



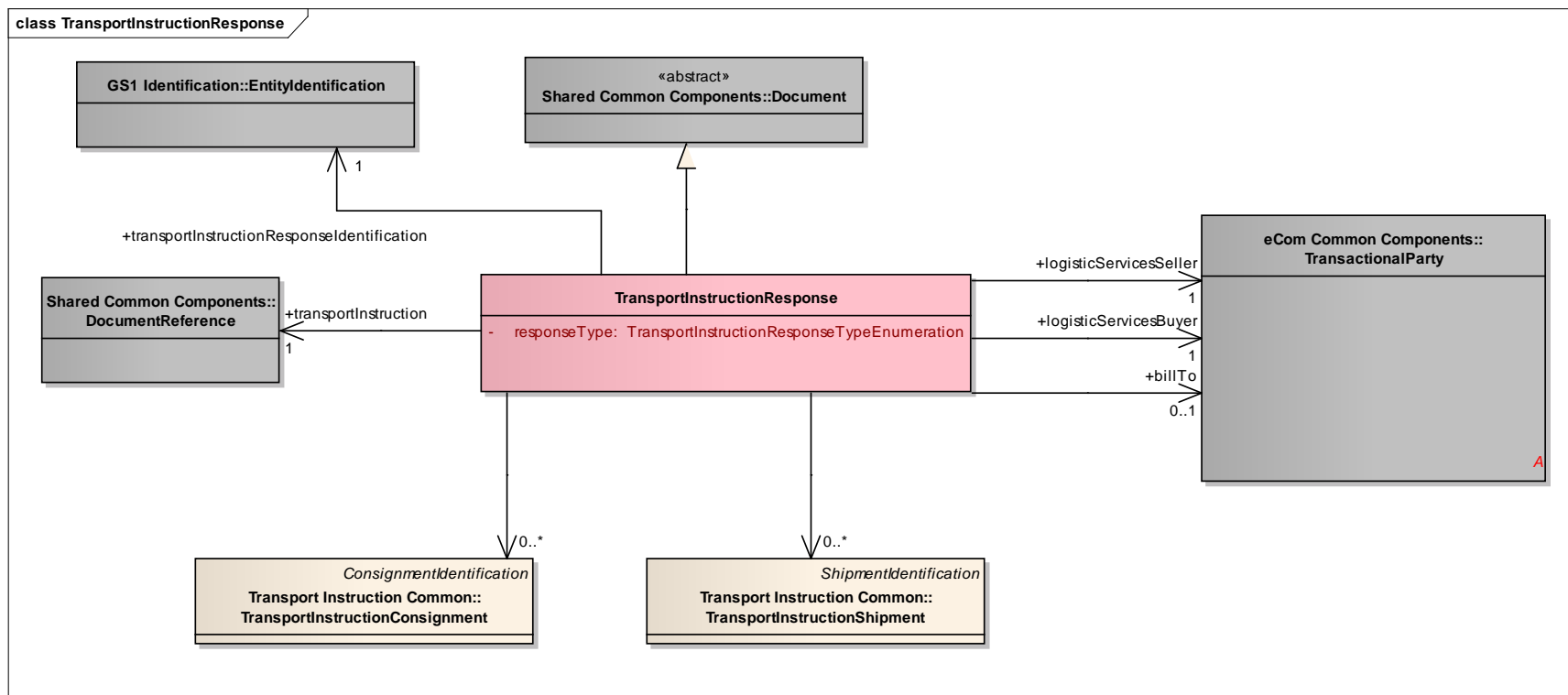
5.2. Transport Instruction Response (message)

5.2.1. GDD Report - Transport Instruction Response

| content | multipl city | attribute / role | datatype / secondary class | definition | requirements |
|----------------------------------|-----------------|---|-------------------------------------|--|---|
| TransportInstruction Response | | | | The main objective of the Transport Instruction Response is to confirm the requested transport services and where needed provide additional information. | |
| Association | [1..1] | transportInstruction | DocumentReference | The identification of the referenced transport instruction. | BRAD TransportInstructionC onfirmation-7 |
| Association | [1..1] | transportInstruction Responselidentificati on | EntityIdentification | The identification of the transport instruction response document. | BRAD TransportInstructionC onfirmation-2 |
| Generalization | | | Document | Provides the generic document details for the transport instruction reponse. | BRAD TransportInstructionC onfirmation-3, 18 |
| Association | [1..1] | logisticServicesSelle r | TransactionalParty | A party that provides logistics services to another party. | BRAD TransportInstructionC onfirmation-5 |
| Association | [1..1] | logisticServicesBuye r | TransactionalParty | A party that purchases logistics services from another party. | BRAD TransportInstructionC onfirmation-4 |
| Association | [0..1] | billTo | TransactionalParty | Identifies the party who receives the invoice. Synonym: Invoicee. | BRAD TransportInstructionC onfirmation-6 |
| Association | [0..*] | | TransportInstructionConsig nment | Provides the information on a consignment contained in this transport instruction response. | BRAD TransportInstructionC onfirmation-1, 10, 11, 12, 13, 19 |
| Association | [0..*] | | TransportInstructionShipm ent | Provides the information on a shipment contained in this transport instruction response. | BRAD TransportInstructionC onfirmation-1, 15, 16 |

| content | multipli city | attribute / role | datatype / secondary class | definition | requirements |
|-----------|------------------|------------------|--------------------------------------|--|--------------|
| Attribute | [1..1] | responseType | TransportInstructionResponseTypeEnum | Code specifying the acceptance or non-acceptance of the services requested in the Transport Instruction. | |

5.2.2. Class Diagram - Transport Instruction Response



5.3. Transport Instruction Common (package)

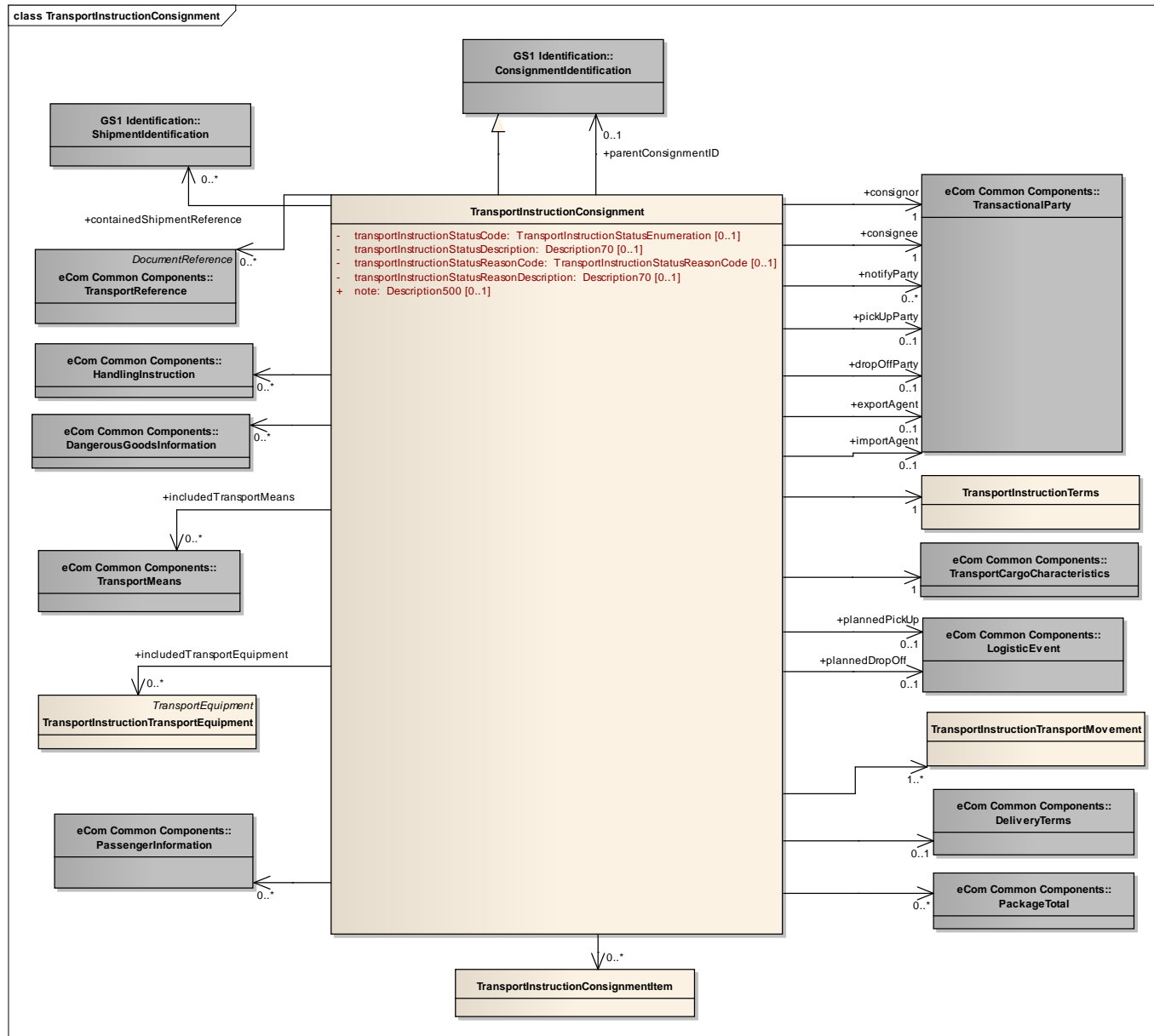
5.3.1. GDD Report – Transport Instruction Consignment

| Content | Attribute/Role | Datatype/Secondary Class | Multiplicity | Definition | Requirements |
|---------------------------------|----------------------------|--|--------------|--|------------------------------------|
| TransportInstructionConsignment | | | | A consignment is a logical grouping of goods (one or more physical entities) that is intended to be transported as a whole from a consignor to a consignee by a carrier or freight forwarder via one or more modes of transport, subject to one single transport contract. | |
| Association | plannedDropOff | LogisticEvent | 0..1 | Details on the planned delivery of the consignment. | BRAD CON6, CON7 (LogisticLocation) |
| Association | | TransportInstructionTransportMovement | 1..* | The transport movement details for this consignment. | |
| Association | plannedPickUp | LogisticEvent | 0..1 | Details on the planned collection of the consignment. | BRAD CON6, CON7 (LogisticLocation) |
| Association | | DeliveryTerms | 0..1 | The applicable legal, customs, financial and insurance terms that have been agreed for the delivery of the consignment. | BRAD CON10 |
| Association | | HandlingInstruction | 0..* | Instruction on the way to treat the goods during transport and storage. | BRAD CON9 |
| Association | | PackageTotal | 0..* | Aggregate information per type of package contained in the consignment. | BRAD CON18 |
| Association | includedTransportEquipment | TransportInstructionTransportEquipment | 0..* | Details on the transport equipment contained in the consignment. | |
| Association | consignee | TransactionalParty | 1 | The party receiving a consignment of goods. | BRAD CON1 |

| | | | | | |
|----------------|----------------------------|-------------------------------------|------|---|-------------------------------------|
| Association | | TransportReference | 0..* | References to the commercial transaction or to transport or legal documents related to the consignment. | BRAD CON19 |
| Association | parentConsignmentID | ConsignmentIdentification | 0..1 | Reference to another consignment that contains this consignment (and several other consignments). | BRAD CON22 |
| Association | | TransportCargoCharacteristics | 1 | Aggregate information on the goods that are contained in this consignment. | BRAD CON28 |
| Association | containedShipmentReference | ShipmentIdentification | 0..* | Reference to the shipment(s) contained in this consignment. # | |
| Association | | TransportInstructionConsignmentItem | 0..* | A line item included in this consignment of goods.# | |
| Association | notifyParty | TransactionalParty | 0..* | The party which needs to be informed regarding the consignment information to fulfill the end to end transportation process. | BRAD CON2 |
| Association | consignor | TransactionalParty | 1 | The party despatching a consignment of goods. | BRAD CON1 |
| Association | | TransportInstructionConsignment | 0..* | Provides the information on a consignment contained in this transport instruction. | BRAD TransportInstruction-8, 12, 13 |
| Association | includedTransportMeans | TransportMeans | 0..* | Details on the transport means contained in the consignment, such as trucks being transported on a ferry. | |
| Association | | DangerousGoodsInformation | 0..* | Hazardous instructions for this consignment, such as where or how specified packages or containers are to be handled because of restriction from dangerous goods. | BRAD CON30 |
| Generalization | | ConsignmentIdentification | | The unique identifier for this consignment. | BRAD CON3 |
| Association | | PassengerInformation | 0..* | | |

| | | | | | |
|-------------|---|---------------------------------------|------|--|---|
| Association | exportAgent | TransactionalParty | 0..1 | The party acting as an agent for, or on behalf of, the consignor with respect to the customs export procedures for this consignment. | BRAD TM: additional requirement during design phase. |
| Association | | TransportInstructionConsignment | 0..* | Provides the information on a consignment contained in this transport instruction response. | BRAD TransportInstructionConfirmation-1, 10, 11, 12, 13, 19 |
| Association | dropOffParty | TransactionalParty | 0..1 | Identification of the physical location to where goods will be or have been shipped. | BRAD CON1 |
| Association | pickUpParty | TransactionalParty | 0..1 | Identification of the physical location from where goods will be picked up for delivery. | BRAD CON1 |
| Association | importAgent | TransactionalParty | 0..1 | The party acting as an agent for, or on behalf of, the consignee with respect to the customs import procedures for this consignment. # | BRAD TM: additional requirement during design phase. |
| Association | | TransportInstructionTerms | 1 | The agreed transport service conditions for this consignment. | |
| Attribute | transportInstructionStatusCode | TransportInstructionStatusEnumeration | 0..1 | Code specifying the instruction status of this consignment. | BRAD TransportInstructionConfirmation-8 |
| Attribute | transportInstructionStatusDescription | Description70 | 0..1 | Textual description of the instruction status of this consignment. # | BRAD TransportInstructionConfirmation-8 |
| Attribute | transportInstructionStatusReasonCode | TransportInstructionStatusReasonCode | 0..1 | Code specifying the instruction status reason for this consignment. | BRAD TransportInstructionConfirmation-8 |
| Attribute | transportInstructionStatusReasonDescription | Description70 | 0..1 | Textual description of the instruction status reason for this consignment. | BRAD TransportInstructionConfirmation-8 |
| Attribute | note | Description500 | 0..1 | Free text used to convey information that is not processed by applications. Only meant to present the information to a user as on a screen, in a browser, etc. | BRAD RQ 09.236.F |

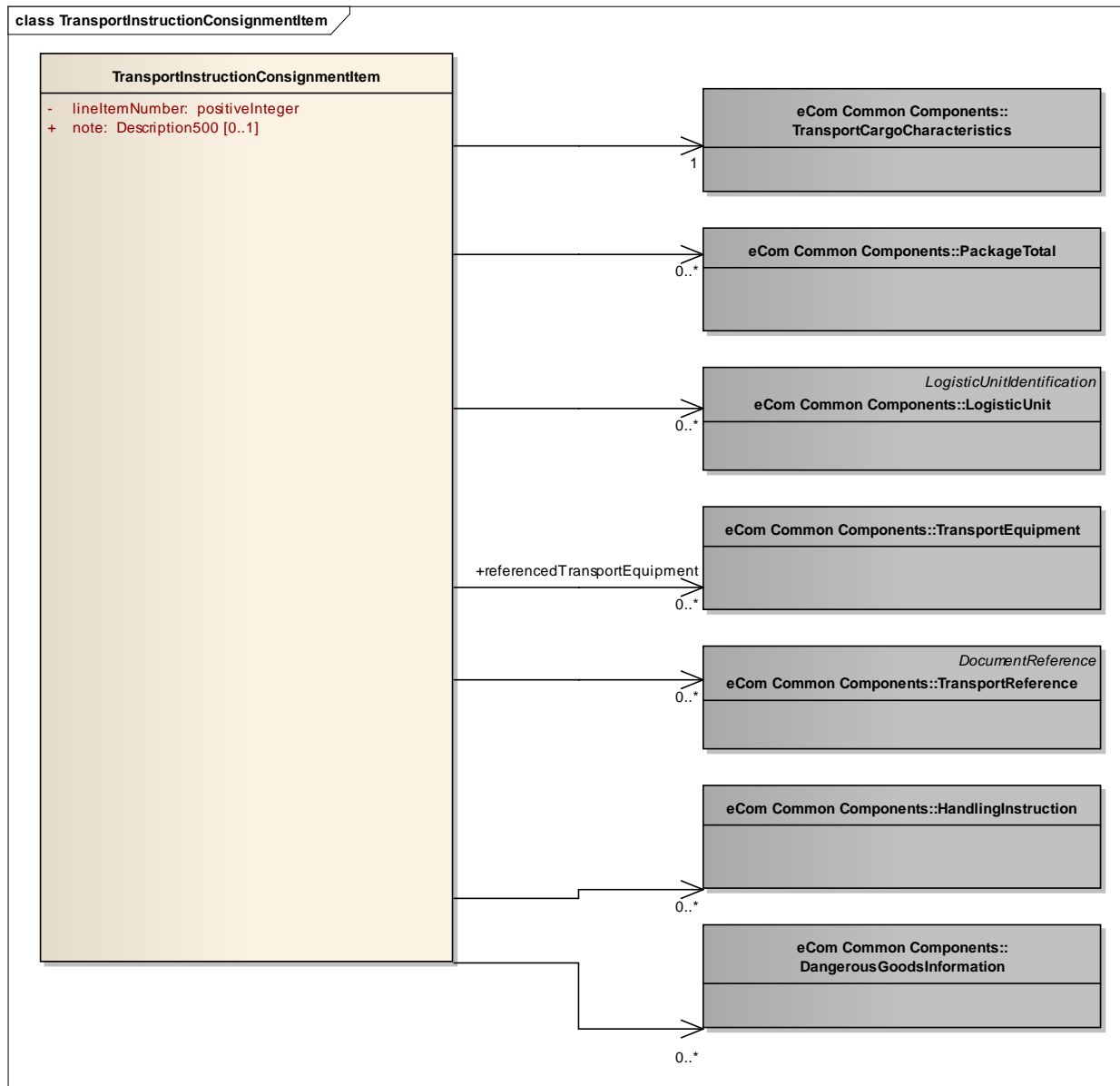
5.3.2. Class Diagram – Transport Instruction Consignment



5.3.3. GDD Report – Transport Instruction Consignment Item

| Content | Attribute / Role | Datatype /Secondary class | Multi plicity | Definition | Requireme nts |
|---|-------------------------------|--------------------------------|---------------|--|------------------|
| TransportInstructionConsignme ntItem | | | | A <u>consignment item</u> is a (collection of) Load Units that can be identified (uniquely) within the consignment and may be treated/handled in the same way during transportation (and associated administrative processes). | |
| Association | | LogisticUnit | 0..* | Information on the logistic unit(s) included in the consignment item. | |
| Association | | TransportReference | 0..* | References to the commercial transaction or to transport or legal documents related to the consignment item. | BRAD CIT9 |
| Association | | HandlingInstruction | 0..* | Handling instructions for the consignment item. | BRAD CIT6, CIT8 |
| Association | | DangerousGoodsInfor mation | 0..* | Hazardous instructions for this consignment item, such as where or how specified packages or containers are to be handled because of restriction from dangerous goods. | BRAD CIT7 |
| Association | | PackageTotal | 0..* | Aggregate information per type of package included in the consignment item. | BRAD CIT11 |
| Association | referencedTransp ortEquipment | TransportEquipment | 0..* | Identification of the transport equipment that contains the consignment item. | |
| Association | | TransportCargoCharact eristics | 1 | Aggregate information on the goods that are included in this consignment item. | |
| Attribute | lineltemNumber | positiveInteger | 1..1 | The sequence number for this consignment item. | BRAD CIT3 |
| Attribute | note | Description500 | 0..1 | Free text used to convey information that is not processed by applications. Only meant to present the information to a user as on a screen, in a browser, etc. | BRAD RQ 09.236.F |

5.3.4. Class Diagram – Transport Instruction Consignment Item



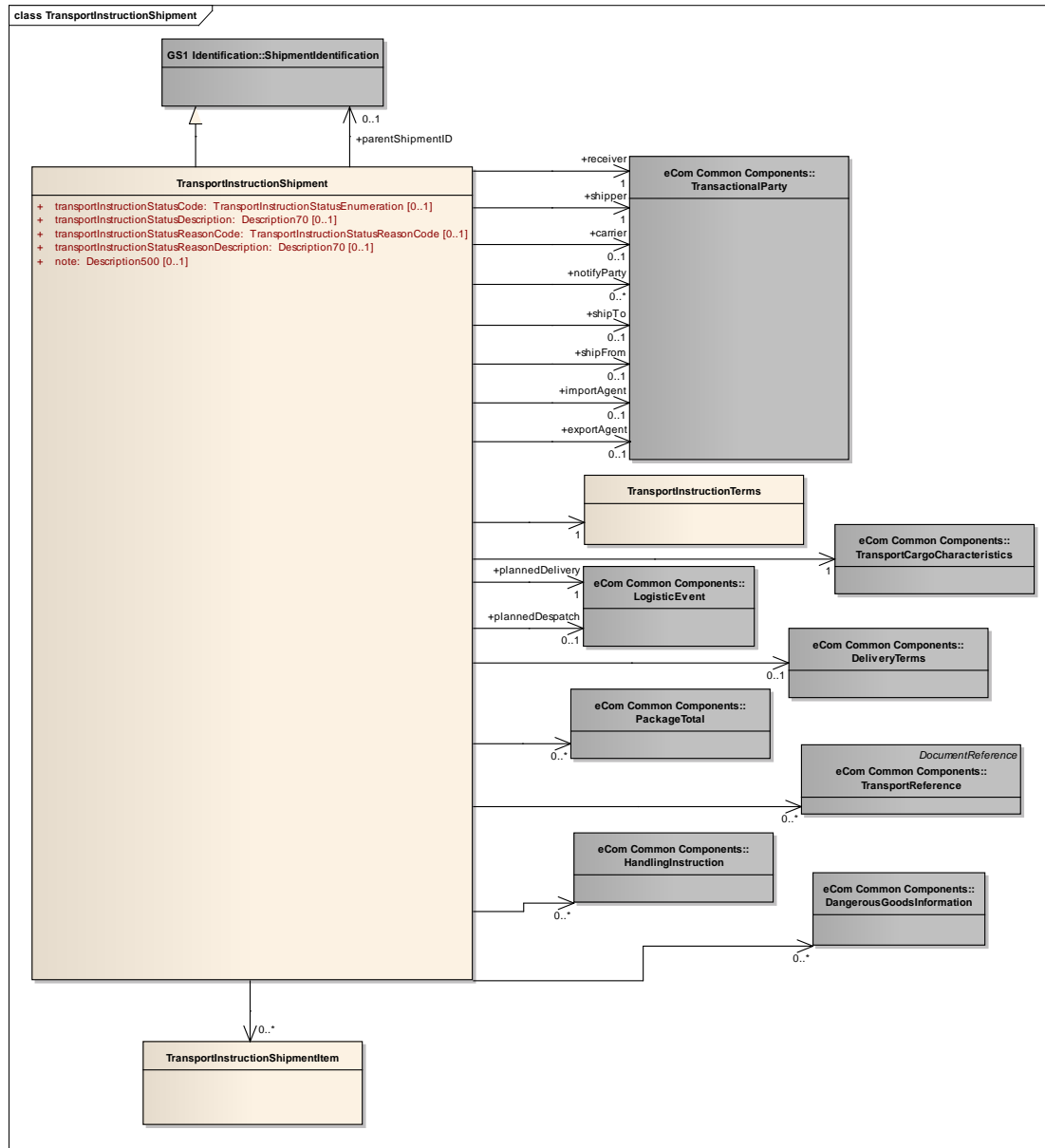
5.3.5. GDD Report – Transport Instruction Shipment

| Content | Attribute / Role | Datatype /Secondary class | Multiplicity | | Definition | Requirements |
|-------------------------------------|------------------|----------------------------------|--------------|--|---|--|
| TransportInstructionShipment | | | | | A <u>shipment</u> is an identifiable collection of one or more Trade Items available to be transported together from the shipper (Original Consignor/Shipper), to the receiver (Final/Ultimate Consignee). Typically the shipment is the entity communicated between trading partners in the Despatch and Receiving Advice. | |
| Association | receiver | TransactionalParty | 1 | | A party which engages in receiving this shipment of goods. | BRAD SHM1 |
| Association | | TransportInstructionShipmentItem | 0..* | | A line item included in this shipment of goods. # | |
| Association | | HandlingInstruction | 0..* | | Instruction on the way to treat the goods during transport and storage. # | BRAD SHM7 |
| Association | notifyParty | TransactionalParty | 0..* | | The party which needs to be informed regarding the shipment to fulfill the end to end transportation process. # | BRAD SHM20 |
| Association | plannedDespatch | LogisticEvent | 0..1 | | Details on the planned despatch of the shipment. | BRAD SHM10, SHM11 (LogisticLocation) |
| Generalization | | ShipmentIdentification | | | The unique identifier for this shipment. | BRAD SHM4 |
| Association | | DeliveryTerms | 0..1 | | The applicable legal, customs, financial and insurance terms that have been agreed for the delivery of the shipment. | BRAD SHM27 |
| Association | parentShipmentID | ShipmentIdentification | 0..1 | | Reference to a shipment that contains this shipment (and several other shipments). # | BRAD SHM17 |
| Association | shipFrom | TransactionalParty | 0..1 | | The physical location from where goods will be or have been shipped. | BRAD SHM1 |
| Association | | TransportInstructionShipment | 0..* | | Provides the information on a shipment contained in this transport instruction. | BRAD TransportInstruction-8, 9, 10, 11, 15 |
| Association | shipper | TransactionalParty | 1 | | A party which engages in shipping this shipment of goods; | BRAD SHM1 |
| Association | importAgent | TransactionalParty | 0..1 | | The party acting as an agent for, or on behalf of, the consignee with respect to the customs import procedures for this shipment. # | BRAD TM: additional requirement during |

| Content | Attribute / Role | Datatype /Secondary class | Multiplicity | | Definition | Requirements |
|-------------|---------------------------------------|---------------------------------------|--------------|--|--|--|
| | | | | | | design phase. |
| Association | | DangerousGoodsInformation | 0..* | | Hazardous instructions for this shipment, such as where or how specified packages or containers are to be handled because of restriction from dangerous goods. | BRAD SHM8 |
| Association | carrier | TransactionalParty | 0..1 | | A party that physically transports goods from one place to another. | BRAD SHM3 |
| Association | plannedDelivery | LogisticEvent | 1 | | Details on the planned delivery of the shipment. | BRAD SHM10, SHM11 (LogisticLocation) |
| Association | | TransportReference | 0..* | | References to the commercial transaction or to transport and legal documents related to the shipment. | BRAD SHM16 |
| Association | | PackageTotal | 0..* | | Aggregate information per type of package contained in the shipment. | BRAD SHM19 |
| Association | | TransportInstructionShipment | 0..* | | Provides the information on a shipment contained in this transport instruction response. | BRAD TransportInstructionConfirmation-1, 15, 16 |
| Association | exportAgent | TransactionalParty | 0..1 | | The party acting as an agent for, or on behalf of, the consignor with respect to the customs export procedures for this shipment. # | BRAD TM: additional requirement during design phase. |
| Association | shipTo | TransactionalParty | 0..1 | | The physical location to where goods will be or have been shipped. | BRAD SHM1 |
| Association | | TransportCargoCharacteristics | 1 | | Aggregate information on the goods that are contained in this shipment. | |
| Association | | TransportInstructionTerms | 1 | | The agreed transport service conditions for this shipment. | |
| Attribute | transportInstructionStatusCode | TransportInstructionStatusEnumeration | 0..1 | | Code specifying the instruction status of this shipment. # | BRAD TransportInstructionConfirmation-9 |
| Attribute | transportInstructionStatusDescription | Description70 | 0..1 | | Textual description of the instruction status of this shipment. # | BRAD TransportInstructionConfirmation-9 |

| Content | Attribute / Role | Datatype /Secondary class | Multiplicity | | Definition | Requirements |
|-----------|---|--------------------------------------|--------------|--|--|--|
| Attribute | transportInstructionStatusReasonCode | TransportInstructionStatusReasonCode | 0..1 | | Code specifying the instruction status reason for this shipment. | BRAD TransportInstructionConfirmation-9 |
| Attribute | transportInstructionStatusReasonDescription | Description70 | 0..1 | | Textual description of the instruction status reason for this shipment. # | BRAD TransportInstructionConfirmation-9 |
| Attribute | note | Description500 | 0..1 | | Free text used to convey information that is not processed by applications. Only meant to present the information to a user as on a screen, in a browser, etc. | BRAD RQ 09.236.F |

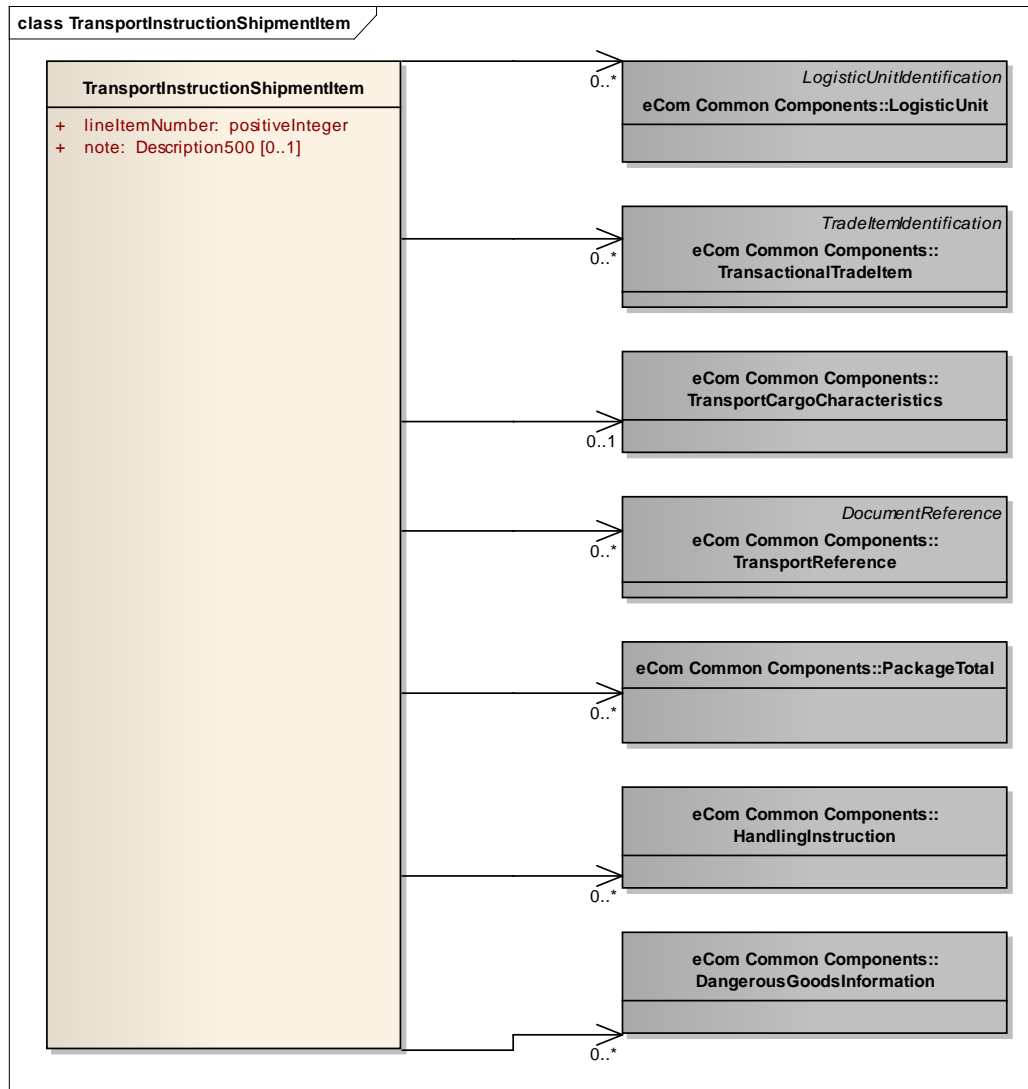
5.3.6. Class Diagram – Transport Instruction Shipment



5.3.7. GDD Report – Transport Instruction Shipment Item

| content | multipl icity | attribute / role | datatype / secondary class | definition | requirements |
|--------------------------------------|------------------|------------------|-------------------------------|---|---|
| TransportInstruction ShipmentItem | | | | A <u>shipment item</u> is a (collection of) Trade Items and/or Logistic Units that can each be identified (uniquely) within a shipment. | |
| Association | [0..*] | | PackageTotal | Aggregate information per type of package included in the shipment item. | BRAD SHI9, SHI13 |
| Association | [0..*] | | TransportReference | References to the commercial transaction or to transport or legal documents related to the shipment item. | BRAD SHI8 |
| Association | [0..*] | | LogisticUnit | Information on the logistic unit(s) included in the shipment item. | BRAD SHI1, SHI18 |
| Association | [0..*] | | TransactionalTradeItem | Information on the trade item(s) included in the shipment item. | BRAD SHI1, SHI3, SHI5, SHI16, SHI17 |
| Association | [0..*] | | HandlingInstruction | Handling instructions for the consignment item. | BRAD SHI6, SHI19 |
| Association | [0..*] | | DangerousGoodsInformation | Hazardous instructions for this shipment item, such as where or how specified packages or containers are to be handled because of restriction from dangerous goods. | BRAD SHI7 |
| Association | [0..1] | | TransportCargoCharacteristics | Aggregate information on the goods that are included in this shipment item. | |
| Attribute | [1..1] | lineItemNumber | positiveInteger | The sequence number for this shipment item. | BRAD SHI2 |
| Attribute | [0..1] | note | Description500 | Free text used to convey information that is not processed by applications. Only meant to present the information to a user as on a screen, in a browser, etc. | |

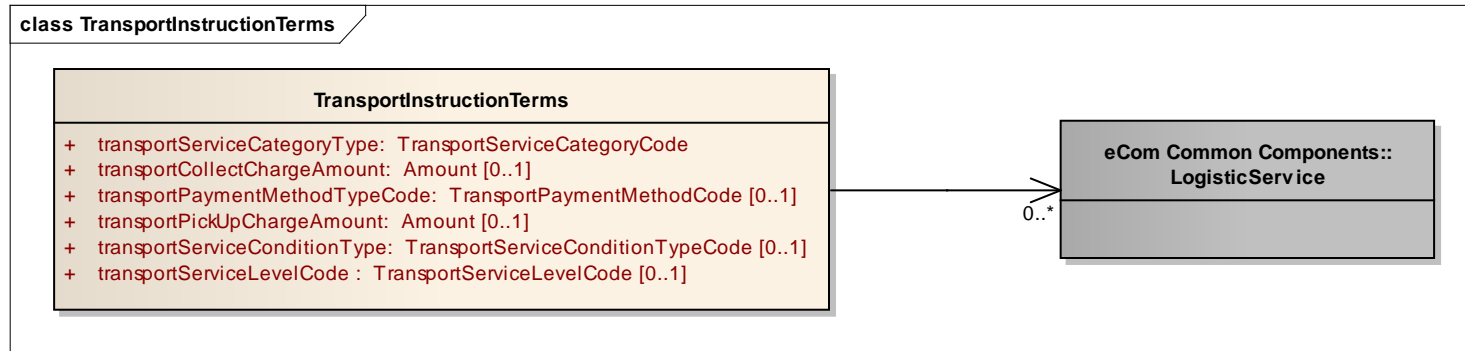
5.3.8. Class Diagram – Transport Instruction Shipment Item



5.3.9. GDD Report – Transport Instruction Terms

| content | multipl icity | attribute / role | datatype /secondary class | definition | requirement s |
|---------------------------|------------------|--------------------------------|-----------------------------------|--|----------------------------------|
| TransportInstructionTerms | | | | Information on the commercial conditions under which the requested transport services will be performed.# | |
| Association | [0..*] | | LogisticService | Details on the additional services agreed as part of the transport instruction terms.# | |
| Attribute | [1..1] | transportServiceCategoryType | TransportServiceCategoryCode | Code specifying the type of transport service that will be provided. For example: Courier service. # | BRAD CON29, SHM26, SHM3 |
| Attribute | [0..1] | transportCollectChargeAmount | Amount | The total monetary value of all freight and other service charges which are to be collected from the consignee at or after delivery of the goods.# | BRAD CON20 |
| Attribute | [0..1] | transportPaymentMethodTypeCode | TransportPaymentMethodCode | Code specifying the method of payment for the transport and service charges. # | BRAD CON11, SHM5 |
| Attribute | [0..1] | transportPickUpChargeAmount | Amount | The total monetary value of all freight and other service charges which are to be collected from the consignor at or after pick-up of the goods. # | BRAD CON20 |
| Attribute | [0..1] | transportServiceConditionType | TransportServiceConditionTypeCode | Code specifying the type of contractual conditions applicable to these transport terms.# | BRAD CON29, SHM26 |
| Attribute | [0..1] | transportServiceLevelCode | TransportServiceLevelCode | Code specifying the service level requested for the transport service. For example: Express service. # | BRAD CON29, SHM26 |

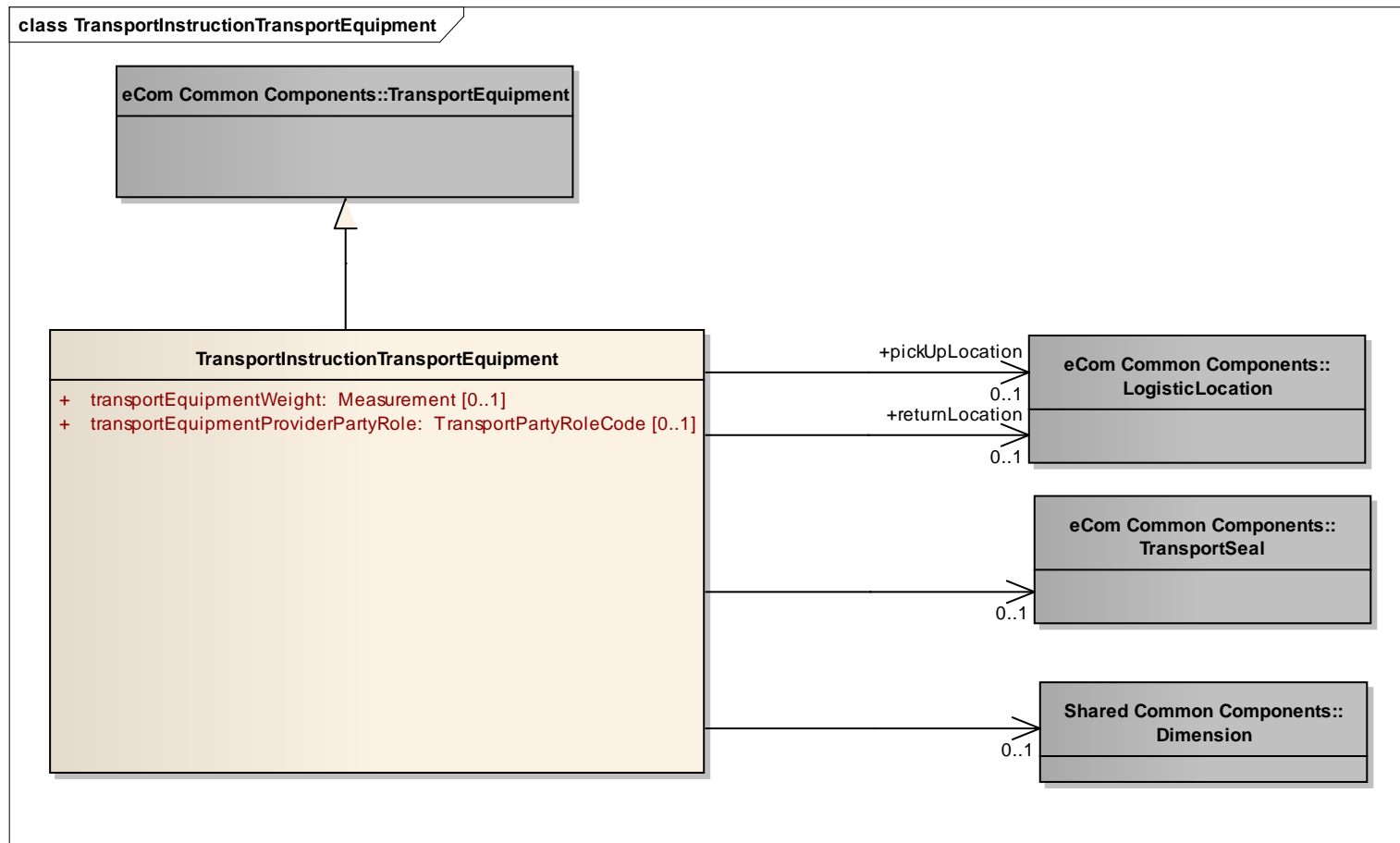
5.3.10. Class Diagram – Transport Instruction Terms



5.3.11. GDD Report – Transport Instruction Transport Equipment

| Content | Attribute / Role | Datatype /Secondary class | Multiplicity | Definition | Requirements |
|--|-------------------------------------|---------------------------|--------------|--|--------------|
| TransportInstructionTransportEquipment | | | | <u>Transport equipment</u> is a piece of equipment used to hold, protect or secure cargo for logistics purposes. Transport Equipment is to be moved using Transport Means. | |
| Association | | TransportSeal | 0..1 | Details on the seal affixed to this piece of transport equipment. | |
| Association | returnLocation | LogisticLocation | 0..1 | The physical location to where the equipment will be returned. | BRAD TEQ6 |
| Association | pickUpLocation | LogisticLocation | 0..1 | The physical location from where the equipment will be collected. | BRAD TEQ5 |
| Association | | Dimension | 0..1 | The linear dimensions of this type of transport equipment. | |
| Generalization | | TransportEquipment | | Provides the generic identification details for the transport equipment. | |
| Attribute | transportEquipmentWeight | Measurement | 0..1 | A measure of the mass of this type of transport equipment. | |
| Attribute | transportEquipmentProviderPartyRole | TransportPartyRoleCode | 0..1 | The code specifying the role of the party responsible for supplying this piece of logistics transport equipment. | BRAD TEQ3 |

5.3.12. Class Diagram – Transport Instruction Transport Equipment

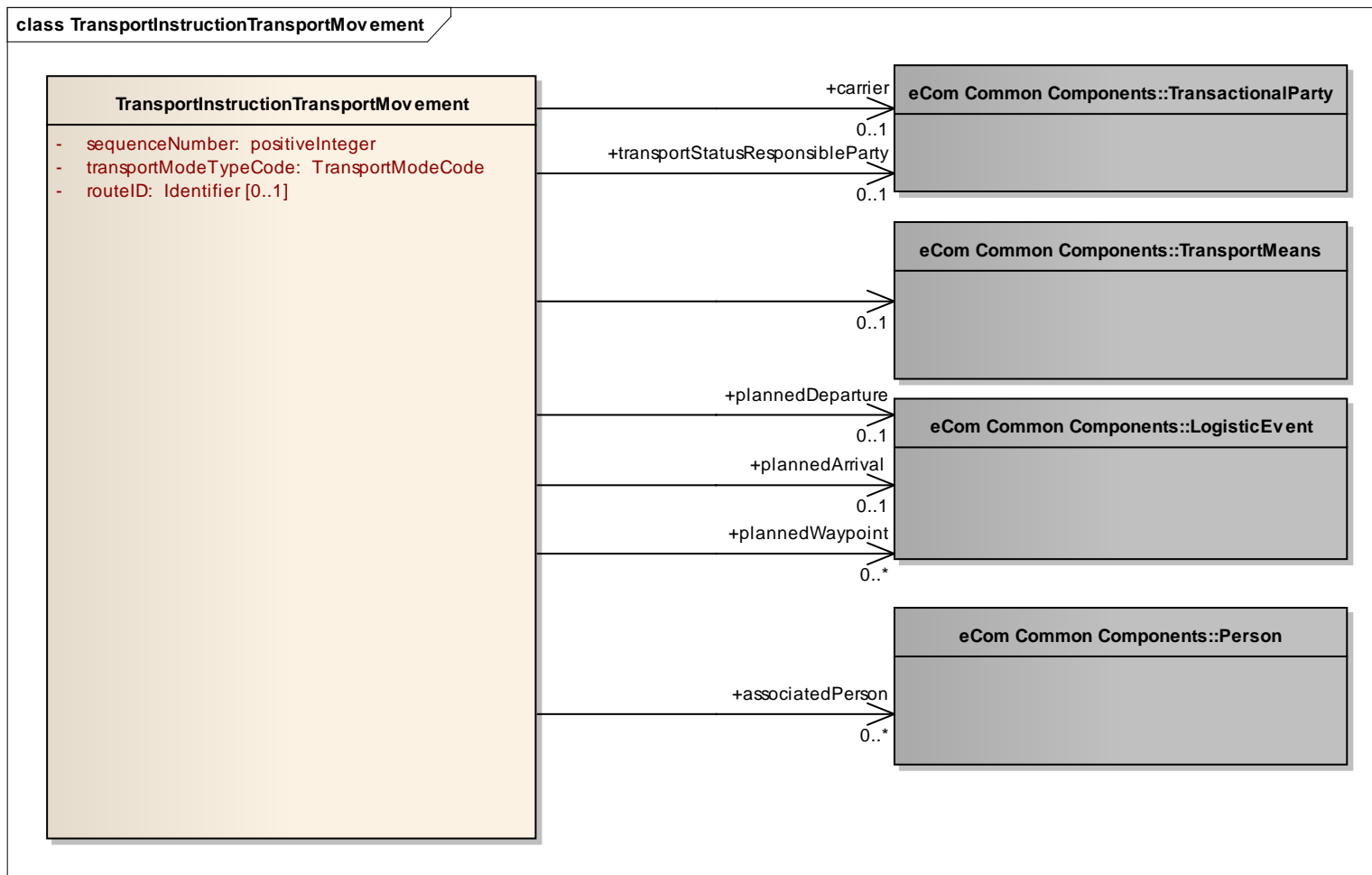


5.3.13. GDD Report – Transport Instruction Transport Movement

| content | multiplicity | attribute / role | datatype / secondary class | definition | requirements |
|---------------------------------------|--------------|---------------------------------|----------------------------|--|-------------------------|
| TransportInstructionTransportMovement | | | | The <u>transport movement</u> information specifies details of the movement of goods such as mode and means of transport, locations, departure, and arrival date(s) and time(s). | |
| Association | [0..*] | associatedPerson | Person | The name and/or identification of an individual associated with this transport movement. | BRAD TMV9 |
| Association | [0..*] | plannedWaypoint | LogisticEvent | An administrative procedure taking place at a specific location that may have an effect on the lead time of a transport movement, such as dangerous goods handling, customs clearance, ... | |
| Association | [0..1] | | TransportMeans | The type of vehicle, aircraft, vessel or other device used for the transport of goods in this transport movement | TMV19, TME1, TME2, TME3 |
| Association | [0..1] | plannedArrival | LogisticEvent | The date, time, date time, or other date time value that the given party expects the means of transport for this transport movement to arrive at the designated arrival location. | BRAD TMV7, 13 |
| Association | [0..1] | plannedDeparture | LogisticEvent | The date, time, date time, or other date time value that the given party expects the means of transport for this transport movement to depart from the designated departure location. | BRAD TMV6, TMV12 |
| Association | [0..1] | carrier | TransactionalParty | A party that physically transports goods from one place to another. | BRAD TMV5 |
| Association | [0..1] | transportStatusResponsibleParty | TransactionalParty | Party in charge of collecting and forwarding the information about the transport movement. # | BRAD TMV17, TMV18 |
| Attribute | [1..1] | sequenceNumber | positiveInteger | Unique number identifying the sequence of this transport movement with respect to the other specified movements.# | |

| content | multiplicity | attribute / role | datatype / secondary class | definition | requirements |
|-----------|--------------|-----------------------|----------------------------|---|--------------|
| Attribute | [1..1] | transportModeTypeCode | TransportModeCode | Code specifying the transportation mode used for this transport movement. # | BRAD TMV2 |
| Attribute | [0..1] | routeID | Identifier | Unique identifier of the standard route that will be used for this transport movement. # | BRAD TMV8 |

5.3.14. Class Diagram – Transport Instruction Transport Movement



5.4. Enumerations (message specific)

5.4.1. TransportInstructionFunctionEnumeration

| Code | Code Description |
|-------------|---|
| SHIPMENT | The transport instruction contains information on one or more shipments to be transported. |
| CONSIGNMENT | The transport instruction contains information on one or more consignments to be transported, and optionally also on shipments contained. |

5.4.2. TransportInstructionResponseTypeEnumeration

| Code | Code Description |
|--------------------------------|--|
| FULLY_ACCEPTED | Fully accepted without amendments (only header information needs to be sent) |
| FULLY_REJECTED | Fully rejected (only header information needs to be sent) |
| FULLY_ACCEPTED_WITH_AMENDMENTS | Fully accepted with amendments / completed details (header and detail information needs to be sent). |
| PARTIALLY_ACCEPTED | Partially accepted, partially rejected (header and detail information needs to be sent) |

5.4.3. TransportInstructionStatusEnumeration

| Code | Code Description |
|-----------|--|
| CONFIRMED | The Logistic Services Seller confirms the instructed shipment / consignment without changes. |
| MODIFIED | The Logistic Services Seller modifies the instructed shipment / consignment. |
| CANCELLED | The Logistic Services Buyer cancels the instructed shipment / consignment |
| REJECTED | The Logistic Services Seller rejects the instructed shipment / consignment |

5.5. Codelists



Note: Reference Shared Common Library Business Message (BMS) Release 3.0.0 and eCom Domain Common Library Business Message (BMS) Release 3.0.0 for all Code Lists

| Class | Codelist | Referenced in |
|---|--------------------------------------|---|
| TransportInstructionConsignment TransportInstructionShipment | TransportInstructionStatusReasonCode | eCom Domain Common Library Business Message (BMS) Release 3.0.0 |
| TransportInstructionTerms | TransportServiceCategoryCode | eCom Domain Common Library Business Message (BMS) Release 3.0.0 |
| TransportInstructionTerms | TransportPaymentMethodCode | eCom Domain Common Library Business Message (BMS) Release 3.0.0 |
| TransportInstructionTerms | TransportServiceConditionTypeCode | eCom Domain Common Library Business Message (BMS) Release 3.0.0 |

| Class | Codelist | Referenced in |
|--|---------------------------|---|
| TransportInstructionTerms | TransportServiceLevelCode | eCom Domain Common Library Business Message (BMS) Release 3.0.0 |
| TransportInstructionTransportEquipment | TransportPartyRoleCode | eCom Domain Common Library Business Message (BMS) Release 3.0.0 |
| TransportInstructionTransportMovement | TransportModeCode | eCom Domain Common Library Business Message (BMS) Release 3.0.0 |

6. Business Document Example

6.1. Transport Instruction – Domestic, 1 consignment, 1 truck, with logistic units

| TransportInstruction | |
|---|---------------------|
| creationDateTime | 2011-01-12T12:00:00 |
| documentStatusCode | ORIGINAL |
| transportInstructionFunction | CONSIGNMENT |
| EntityIdentification (+transportInstructionIdentification) | |
| uniqueCreatorIdentification | TRINS00001 |
| TransactionalParty (+logisticServicesSeller) | |
| gln | 4048623000003 |
| TransactionalParty (+logisticServicesBuyer) | |
| gln | 7365566156190 |
| TransportInstructionConsignment | |
| ConsignmentIdentification | |
| ginc | 7365566156191234567 |
| TransactionalParty (+consignor) | |
| gln | 7365566156190 |
| TransactionalParty (+consignee) | |
| gln | 7300011234566 |
| TransportInstructionTerms | |
| transportServiceCategoryType | 30 |
| TransportCargoCharacteristics | |
| cargoTypeCode | 21 |
| cargoTypeDescription | General cargo (EN) |
| totalGrossVolume | 3.5 (CBM) |

| | |
|--|--------------------|
| totalGrossWeight | 1500 (KGM) |
| totalPackageQuantity | 5 |
| TransportInstructionTransportMovement | |
| sequenceNumber | 1 |
| transportModeTypeCode | 30 |
| LogisticEvent (+plannedDeparture) | |
| DateOptionalTime (+logisticEventDateTime) | |
| date | 2011-01-14 |
| LogisticLocation | |
| Address | |
| city | Stockholm |
| LogisticEvent (+plannedArrival) | |
| LogisticLocation | |
| Address | |
| city | Lund |
| PackageTotal | |
| packageTypeCode | 201 |
| totalPackageQuantity | 3 |
| PackageTotal | |
| packageTypeCode | 211 |
| totalPackageQuantity | 2 |
| TransportInstructionConsignmentItem | |
| lineItemNumber | 1 |
| TransportCargoCharacteristics | |
| cargoTypeCode | 21 |
| cargoTypeDescription | Furniture (EN) |
| LogisticUnit (*) | |
| sscc | 373655661561900018 |
| packageTypeCode | 201 |
| LogisticUnit (*) | |
| sscc | 373655661561900025 |
| packageTypeCode | 201 |
| LogisticUnit (*) | |
| sscc | 373655661561900032 |
| packageTypeCode | 201 |
| LogisticUnit (*) | |
| sscc | 373655661561900049 |

| | |
|------------------|--------------------|
| packageTypeCode | 211 |
| LogisticUnit (*) | |
| sscc | 373655661561900056 |
| packageTypeCode | 211 |

6.2. Transport Instruction Response– Domestic, 1 consignment, 1 truck, with logistic units

| | |
|---|--------------------------------|
| TransportInstructionResponse | |
| creationDateTime | 2011-01-13T12:00:00 |
| documentStatusCode | ORIGINAL |
| responseType | FULLY_ACCEPTED_WITH_AMENDMENTS |
| EntityIdentification (+transportInstructionResponseIdentification) | |
| uniqueCreatorIdentification | TRINR00001 |
| TransactionalParty (+logisticServicesSeller) | |
| gln | 4048623000003 |
| TransactionalParty (+logisticServicesBuyer) | |
| gln | 7365566156190 |
| DocumentReference (+transportInstruction) | |
| uniqueCreatorIdentification | TRINS00001 |
| TransportInstructionConsignment | |
| ginc | 7365566156191234567 |
| TransactionalParty (+consignor) | |
| gln | 7365566156190 |
| TransactionalParty (+consignee) | |
| gln | 7300011234566 |
| TransportInstructionTerms | |
| transportServiceCategoryType | 30 |
| TransportCargoCharacteristics | |
| cargoTypeCode | 21 |
| cargoTypeDescription | General cargo (EN) |
| totalGrossVolume | 3.5 (CBM) |
| totalGrossWeight | 1500 (KGM) |
| totalPackageQuantity | 5 |
| TransportInstructionTransportMovement | |
| sequenceNumber | 1 |
| transportModeTypeCode | 30 |
| TransactionalParty (+carrier) | |

| | |
|--|--------------------|
| gln | 4048623000003 |
| LogisticEvent (+plannedDeparture) | |
| LogisticLocation | |
| Address | |
| city | Stockholm |
| DateOptionalTime (+logisticEventDateTime) | |
| date | 2011-01-14 |
| time | 08:00:00 |
| LogisticEvent (+plannedArrival) | |
| LogisticLocation | |
| Address | |
| city | Lund |
| DateOptionalTime (+logisticEventDateTime) | |
| date | 2011-01-14 |
| time | 17:00:00 |
| PackageTotal | |
| packageTypeCode | 201 |
| totalPackageQuantity | 3 |
| PackageTotal | |
| packageTypeCode | 211 |
| totalPackageQuantity | 2 |
| TransportInstructionConsignmentItem | |
| lineItemNumber | 1 |
| TransportCargoCharacteristics | |
| cargoTypeCode | 21 |
| cargoTypeDescription | Furniture (EN) |
| LogisticUnit (*) | |
| sscc | 373655661561900018 |
| packageTypeCode | 201 |
| LogisticUnit (*) | |
| sscc | 373655661561900025 |
| packageTypeCode | 201 |
| LogisticUnit (*) | |
| sscc | 373655661561900032 |
| packageTypeCode | 201 |
| LogisticUnit (*) | |
| sscc | 373655661561900049 |
| packageTypeCode | 211 |

| | |
|-------------------------|--------------------|
| LogisticUnit (*) | |
| sscc | 373655661561900056 |
| packageTypeCode | 211 |

6.3. Transport Instruction – Domestic, 1 shipment, 1 truck, with logistic units

| | |
|---|---------------------|
| TransportInstruction | |
| creationDateTime | 2011-01-12T12:00:00 |
| documentStatus | ORIGINAL |
| transportInstructionFunction | SHIPMENT |
| EntityIdentification (+transportInstructionIdentification) | |
| uniqueCreatorIdentification | TRINS00002 |
| TransactionalParty (+logisticServicesSeller) | |
| gln | 4048623000003 |
| TransactionalParty (+logisticServicesBuyer) | |
| gln | 7365566156190 |
| TransportInstructionShipment | |
| gsin | 73655661561900123 |
| TransactionalParty (+receiver) | |
| gln | 7300011234566 |
| TransactionalParty (+shipper) | |
| gln | 7365566156190 |
| TransactionalParty (+shipTo) | |
| Address | |
| city | Lund |
| postalCode | 22478 |
| streetAddressOne | Glimmervägen 125 |
| TransportInstructionTerms | |
| transportServiceCategoryType | 30 |
| TransportCargoCharacteristics | |
| cargoTypeCode | 21 |
| cargoTypeDescription | General cargo (EN) |
| totalGrossVolume | 3.5 (CBM) |
| totalGrossWeight | 1500 (KGM) |
| totalPackageQuantity | 5 |
| LogisticEvent (+plannedDelivery) | |

| | |
|--|--------------------|
| DateOptionalTime (+logisticEventDateTime) | |
| date | 2011-01-18 |
| PackageTotal (*) | |
| packageTypeCode | 201 |
| totalPackageQuantity | 3 |
| PackageTotal (*) | |
| packageTypeCode | 211 |
| totalPackageQuantity | 2 |
| TransportInstructionShipmentItem (*) | |
| lineItemNumber | 1 |
| LogisticUnit (*) | |
| sscc | 373655661561900018 |
| packageTypeCode | 201 |
| LogisticUnit (*) | |
| sscc | 373655661561900025 |
| packageTypeCode | 201 |
| LogisticUnit (*) | |
| sscc | 373655661561900032 |
| packageTypeCode | 201 |
| TransactionalTradeltem | |
| gtin | 03736556615609 |
| tradeltemQuantity | 3 |
| TransportInstructionShipmentItem (*) | |
| lineItemNumber | 2 |
| LogisticUnit (*) | |
| sscc | 373655661561900049 |
| packageTypeCode | 211 |
| tradeltemQuantity | 10 |
| LogisticUnit (*) | |
| sscc | 373655661561900056 |
| packageTypeCode | 211 |
| tradeltemQuantity | 10 |
| TransactionalTradeltem | |
| gtin | 03736556615616 |
| tradeltemQuantity | 20 |

7. Implementation Considerations

(Insert Content Here)

8. Testing

This section describes the testing criteria for business solutions.

8.1. Pass / Fail Criteria

| No. | Test Criteria | Related Requirement | Design Element | Pass Criteria | Fail Criteria |
|-----|---------------|---------------------|----------------|---------------|---------------|
| 1 | | | | | |
| 2 | | | | | |
| 3 | | | | | |

8.2. Test Data

| Attribute | Value |
|-----------|-------|
| | |
| | |
| | |
| | |

9. Appendices

Not Applicable

10. Summary of Changes

| Change | BSD Version | Associated CR Number |
|---|-------------|----------------------|
| <p>Added section 5.5 Codelists, and populated the section. Moved section "Architecture Principles" after Summary of Changes. Fixed typo in header of section 11: "Principals" -> "Principles" Updated business examples to match the pilot issue resolution and the resequencing of attributes and associations.</p> <p><i>Pilot Issue resolution:</i> Updated class diagram and GDD report for Transport Instruction Transport Equipment:</p> <p>■ Added generalization to eCom:TransportEquipment</p> | 1.1.0 | |

| Change | BSD Version | Associated CR Number |
|---|-------------|----------------------|
| <ul style="list-style-type: none"> removed association to ReturnableAssetIdentification (comes back via inheritance) removed attribute transportEquipmentTypeCode (comes back via inheritance) Added association to Dimension Added attribute transportEquipmentWeight <p>Updated class diagram and GDD report for Transport Instruction Consignment:</p> <ul style="list-style-type: none"> Added association to TransportMeans with rolename +includedTransportMeans (0..*) Added association to PassengerInformation (0..*) Changed cardinality of association +notifyParty (TransactionalParty) from 0..1 to 0..* Renamed all existing attributes, removed the term consignment. Added new attribute: note Re-sequenced the associations <p>Updated class diagram and GDD report for Transport Instruction Consignment Item:</p> <ul style="list-style-type: none"> Deleted association referencedTransportEquipment to ReturnableAssetIdentification Added association referencedTransportEquipment to TransportEquipment Added attribute: note Re-sequenced associations <p>Updated class diagram and GDD report for Transport Instruction Transport Movement:</p> <ul style="list-style-type: none"> Added association plannedWaypoint (0..*) to LogisticEvent. GDD Definition: An administrative procedure taking place at a specific location that may have an effect on the lead time of a transport movement, such as dangerous goods handling, customs clearance, ... <p>Updated class diagram and GDD report for Transport Instruction Shipment:</p> <ul style="list-style-type: none"> Changed cardinality of association +notifyParty (TransactionalParty) from 0..1 to 0..* Added attribute: note Re-sequenced associations <p>Updated class diagram and GDD report for Transport Instruction Shipment Item:</p> <ul style="list-style-type: none"> Added new attribute: note | | |

| Change | BSD Version | Associated CR Number |
|--|--------------------|----------------------|
| <ul style="list-style-type: none"> ■ Made cardinality of association to TransactionalTradeItem 0..* instead of 1..* ■ Resequenced the associations ■ TransportInstructionShipment: attribute transportInstructionShipmentStatus was renamed to transportInstructionStatusCode | | |
| <p>In class diagrams and GDD report of Transport Instruction Response:</p> <ul style="list-style-type: none"> ■ Renamed association to DocumentReference into transportInstruction (was uppercase) | 1.1.0 (8-Nov-2011) | |

11. Adherence to Architectural Principles

| # | AG Principle | BSD Adherence Statement | Does BSD Adhere? | Comment |
|-----|--|---|-------------------------------------|---------|
| 2.1 | The GS1 Architecture shall be fully aligned to GS1 Strategy, Vision, & Mission | The solution in the BSD is aligned with the business problem as defined in the CR and BCD. | <input checked="" type="checkbox"/> | |
| 2.2 | The GS1 Architecture shall leverage the use of GS1 Keys | The solution maintains the GS1 keys as the primary, mandatory identifiers. | <input checked="" type="checkbox"/> | |
| 2.3 | The GS1 Architecture shall leverage the common GS1 Global Data Dictionary (GDD) | The solution does not alter the formats of primary identifiers and complies with data elements as defined in the Global Data Dictionary. | <input checked="" type="checkbox"/> | |
| 2.4 | The GS1 Architecture shall be forward-looking, provide for migration strategies and backward compatibility, and support adaptable and flexible solutions | The solution is backwards compatible according to the stated scope in the document. The solution takes into consideration the potential impact of the standard, especially with respect to implementation and maintenance. Any potential known impact is documented. | <input checked="" type="checkbox"/> | |
| 2.5 | The GS1 Architecture shall support business processes tied to trading partner needs, relevant, and committed to demonstrable business value | All business requirements contained in the related BRAD come from trading partners or representatives with a genuine intention to implement the standards when developed. All requirements are driven by the business needs of the trading partners. | <input checked="" type="checkbox"/> | |
| 2.6 | The GS1 Architecture shall enable security where appropriate | Security solutions are included where appropriate. | <input checked="" type="checkbox"/> | |
| 2.7 | The GS1 Architecture shall be consistent | The solution does not violate consistency of the data architecture within each layer and between each layer of the GS1 System. For example, requirements do not alter a key used across GS1 standards or alter a reusable object without applying this change across related standards. | <input checked="" type="checkbox"/> | |
| 2.8 | The GS1 Architecture shall be royalty-free | The solution supports this principal where possible. The solution may include the use of other standards organizations that may not be royalty free. | <input checked="" type="checkbox"/> | |

| # | AG Principle | BSD Adherence Statement | Does BSD Adhere? | Comment |
|-----|---|---|-------------------------------------|---------|
| 3.1 | The GS1 Architecture should promote the achievement of the best overall value at the lowest total cost of ownership | The solution promotes the achievement of the best overall value at the lowest total cost of ownership. | <input checked="" type="checkbox"/> | |
| 3.2 | The GS1 Architecture should promote scalability | The solution takes into consideration the potential scalability of the standard. Any potential known impact to scalability is documented. | <input checked="" type="checkbox"/> | |
| 3.3 | The GS1 Architecture should promote seamless integration | The BSD promotes seamless integration with other GS1 Standards if in scope. | <input checked="" type="checkbox"/> | |
| 3.4 | The GS1 Architecture should promote interoperability and compliance | The solution takes into consideration data and process interoperability. For example, any shared objects between interoperable messages must remain consistent. Any potential known impact to interoperability is documented. | <input checked="" type="checkbox"/> | |
| 3.5 | The GS1 Architecture should promote simplicity and standard interfaces | The solution does not threaten the standardisation of the interfaces of the GS1 System. Interfaces are not limited to references to technology but also include such ideas as business interfaces and process interfaces. | <input checked="" type="checkbox"/> | |
| 3.6 | The GS1 Architecture should avoid duplication | The solution does not create duplications with existing GS1 components. If there are potential duplications, these are documented with a stated rationale for the duplication. | <input checked="" type="checkbox"/> | |
| 3.7 | The GS1 Architecture should promote technology independence and a layered approach | The solution does not impose implicit or explicit restrictions of any technology. | <input checked="" type="checkbox"/> | |
| 3.8 | The GS1 Architecture should promote global cross-sector definitions and leverage the best of global and the best of local | The solution takes into account a global perspective. | <input checked="" type="checkbox"/> | |
| 3.9 | The GS1 Architecture shall leverage a common strategy for extensibility | This solution uses consistent and common, extensibility approaches, methodologies and technology where available and applicable. | <input checked="" type="checkbox"/> | |
| 4.1 | In support of a common GS1 Architecture, GS1 shall leverage work of other standards bodies wherever possible. | This solution utilizes works of other standards bodies wherever possible. | <input checked="" type="checkbox"/> | |

| # | AG Principle | BSD Adherence Statement | Does BSD Adhere? | Comment |
|-----|---|---|-------------------------------------|---------|
| 4.2 | In support of a common GS1 Architecture, GS1 shall strive to eliminate exceptions and variances wherever possible | The solution strives to eliminate exceptions and variances wherever possible and does not create new variances. | <input checked="" type="checkbox"/> | |